

AUGUSTA APP CON \*  
119.15 284.625  
AUGUSTA RGNL ATIS  
132.75

GREENSBORO  
116.2 GSO  
Chan 109  
N36°02.74' - W79°58.58'  
L-25-36, H-9-12

LIARS  
N34°47.21' - W80°36.23'  
TURBOJET VERTICAL NAVIGATION  
PLANNING INFORMATION  
Expect clearance to cross at or below FL180.

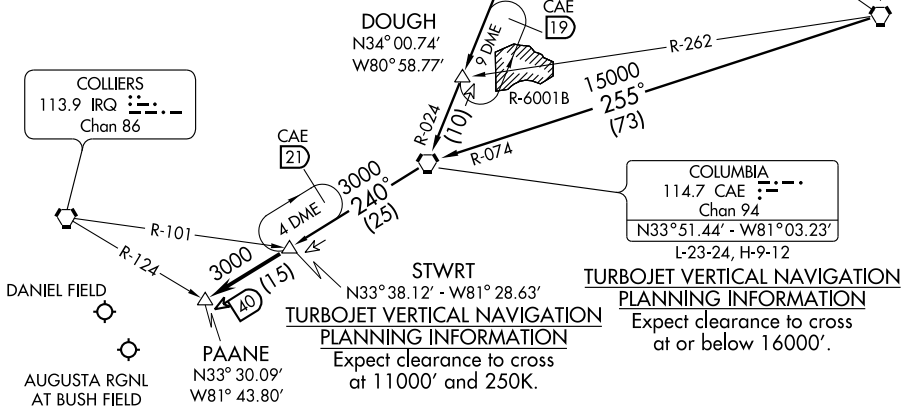
FLORENCE  
115.2 FLO  
Chan 99  
N34°13.98' - W79°39.43'  
L-23-24-35-36, H-9-12

NOTE: RADAR and DME required.

NOTE: Chart not to scale.

SE-4, 31 MAY 2012 to 28 JUN 2012

SE-4, 31 MAY 2012 to 28 JUN 2012



TURBOJET VERTICAL NAVIGATION  
PLANNING INFORMATION  
Expect clearance to cross at or below 16000'.

STWRT  
N33°38.12' - W81°28.63'  
TURBOJET VERTICAL NAVIGATION  
PLANNING INFORMATION  
Expect clearance to cross at 11000' and 250K.

COLUMBIA TRANSITION (CAE.STWRT2): From over CAE VORTAC via CAE R-240 to STWRT INT. Thence. . .

FLORENCE TRANSITION (FLO.STWRT2): From over FLO VORTAC via FLO R-255 and CAE R-074 to CAE VORTAC, then via CAE R-240 to STWRT INT. Thence. . .

GREENSBORO TRANSITION (GSO.STWRT2): From over GSO VORTAC via GSO R-205 to LIARS INT, then via CAE R-024 to CAE VORTAC, then via CAE R-240 to STWRT INT. Thence. . .

. . . . from over STWRT INT, via the CAE R-240 to PAANE INT. Expect radar vectors to airport after PAANE.