

ILS RWY 17C (CAT III)

DALLAS-FORT WORTH INTL (DFW)

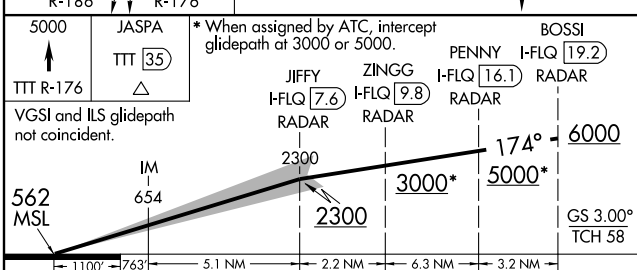
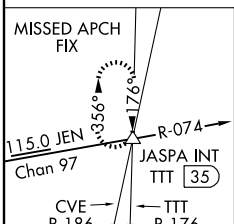
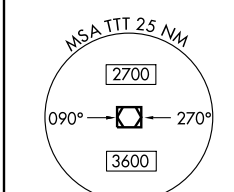
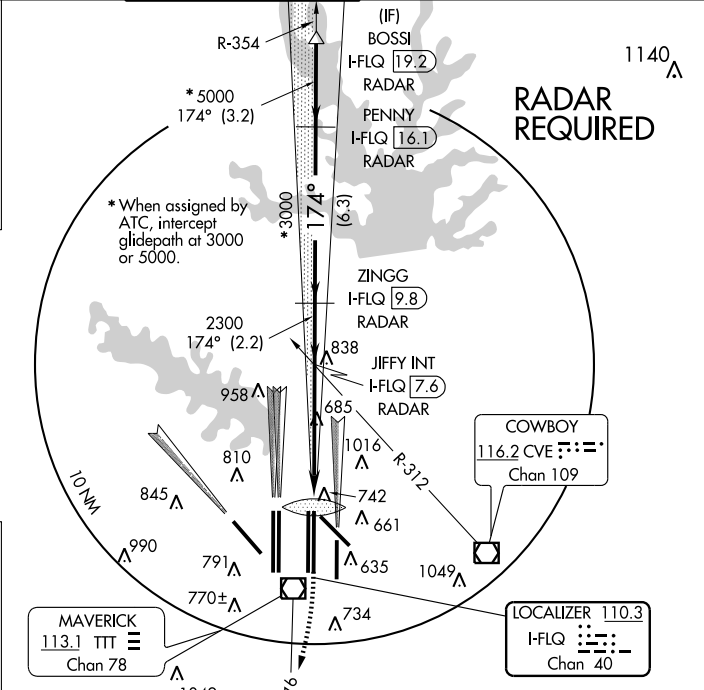
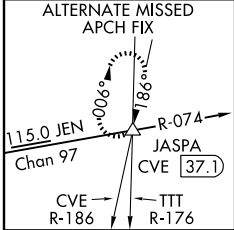
| | | |
|---|------------------------|--|
| LOC/DME I-FLQ 110.3 Chan 40 | APP CRS 174° | Rwy Idg 13401 TDZE 562 Apt Elev 607 |
|---|------------------------|--|

Simultaneous approach authorized with Rwy 17L, 18L/18R.
Inoperative table does not apply to sidestep 17R Cats A and B.
DME or RADAR required.

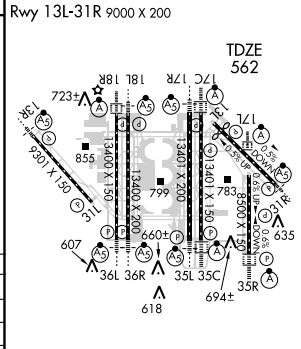
ALSF-2

MISSED APPROACH: Climb to 5000
via TTT VOR/DME R-176 to
JASPA Int/TTT 35 DME and hold.

| | | | | |
|--|------------------------------------|---|---|---------------------------|
| ATIS ARR 123.775 DEP 135.925 | REGIONAL APP CON 127.075 | DFW TOWER 126.55 127.5 EAST 124.15 134.9 WEST | GND CON 121.65 121.8 EAST 121.85 WEST | CLNC DEL 128.25 |
|--|------------------------------------|---|---|---------------------------|



| | |
|----------|----------|
| ELEV 607 | D |
|----------|----------|



| | | | | |
|-----------|---|-----------------|---|---|
| CATEGORY | A | B | C | D |
| S-ILS 17C | | CAT IIIA RVR 07 | | |
| S-ILS 17C | | CAT IIIB RVR 06 | | |
| S-ILS 17C | | CAT IIIC NA | | |

CATEGORY III ILS - SPECIAL AIRCREW & AIRCRAFT CERTIFICATION REQUIRED

HIRL all Rwys
REIL Rwy 13L and 31L
TDZ/CL all Rwy except 13L and 31L

SC-2, 19 NOV 2009 to 17 DEC 2009

SC-2, 19 NOV 2009 to 17 DEC 2009