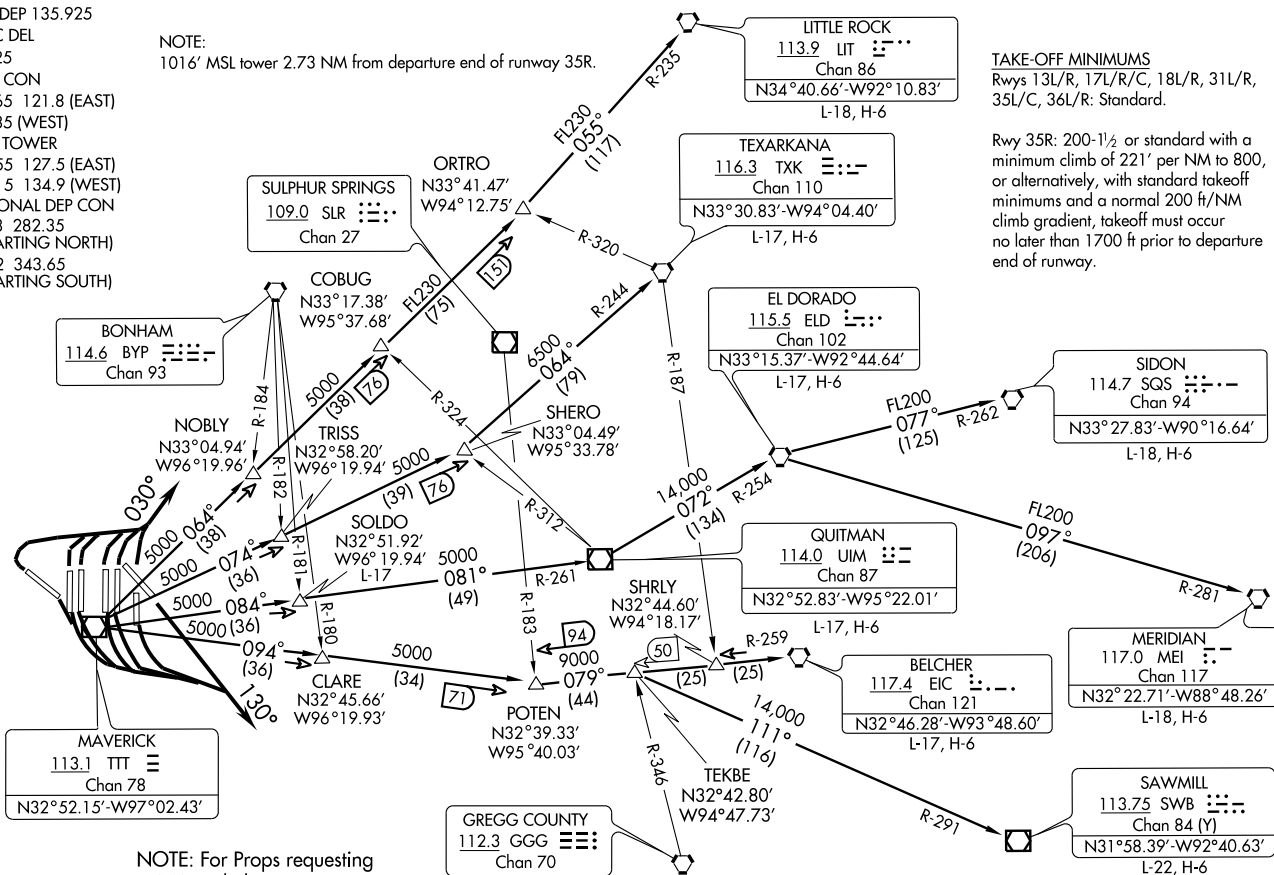


ATIS DEP 135.925  
CLNC DEL  
128.25  
GND CON  
121.65 121.8 (EAST)  
121.85 (WEST)  
DFW TOWER  
126.55 127.5 (EAST)  
124.15 134.9 (WEST)  
REGIONAL DEP CON  
124.3 282.35  
(DEPARTING NORTH)  
125.2 343.65  
(DEPARTING SOUTH)

NOTE:  
1016' MSL tower 2.73 NM from departure end of runway 35R.



NOTE: For Props requesting  
FL240 and above.

(NARRATIVE ON FOLLOWING PAGE)

NOTE: Chart not to scale

DEPARTURE ROUTE DESCRIPTION



JETS

Expect DALLAS or GARLAND DEPARTURE

PROPS

PROPS REQUESTING FL230 AND BELOW EXPECT HUBBARD DEPARTURE

TAKE-OFF RUNWAY 13L: Climb heading 130°, expect vector to appropriate route. Thence. . . .

TAKE-OFF RUNWAYS 13R, 17L/C/R, 18L/R: Climb heading 130°, expect vector to appropriate route. Thence. . . .

TAKE-OFF RUNWAYS 31L/R, 35L/C, 36L/R: Climb heading 030°, expect vector to appropriate route. Thence. . . .

TAKE-OFF RUNWAY 35R: Climb heading 354° to 1200 then via heading 030°, expect vector to appropriate route. Thence. . . .

. . . . Maintain 2,000 feet and expect filed altitude 10 minutes after departure.

BELCHER TRANSITION (WYLIE5.EIC): (For aircraft inbound to Jackson, Monroe, and Shreveport terminal area.) From over TTT VOR/DME via TTT R-094 to POTEN, then via EIC R-259 to EIC VORTAC.

EL DORADO TRANSITION (WYLIE5.ELD): (For aircraft inbound to the Memphis Terminal area. Aircraft should file and/or expect appropriate STAR.) From over TTT VOR/DME via TTT R-084 to SOLD0, then via UIM R-261 to UIM VOR/DME, then via UIM R-072 and ELD R-254 to ELD VORTAC.

LITTLE ROCK TRANSITION (WYLIE5.LIT): From over TTT VOR/DME via TTT R-064 to ORTRO, then via LIT R-235 to LIT VORTAC.

MERIDIAN TRANSITION (WYLIE5.MEI): (For aircraft inbound to the Atlanta Terminal area.) From over TTT VOR/DME via TTT R-084 to SOLD0, then via UIM R-261 to UIM VOR/DME, then via UIM R-072 and ELD R-254 to ELD VORTAC, then via ELD R-097 and MEI R-281 to MEI VORTAC.

QUITMAN TRANSITION (WYLIE5.UIM): (For aircraft inbound to Shreveport Terminal area.) From over TTT VOR/DME via TTT R-084 to SOLD0, then via UIM R-261 to UIM VOR/DME.

SAWMILL TRANSITION (WYLIE5.SWB): From over TTT VOR/DME via TTT R-094 to POTEN, then via EIC R-259 to TEKBE, then via SWB R-291 to SWB VOR/DME.

SIDON TRANSITION (WYLIE5.SQS): From over TTT VOR/DME via TTT R-084 to SOLD0, then via UIM R-261 to UIM VOR/DME, then via UIM R-072 and ELD R-254 to ELD VORTAC, then via ELD R-077 and SQS R-262 to SQS VORTAC.

SOLD0 TRANSITION (WYLIE5.SOLD0): (ATC assigned.) From over TTT VOR/DME via TTT R-084 to SOLD0.

TEXARKANA TRANSITION (WYLIE5.TXK): From over TTT VOR/DME via TTT R-074 to SHERO, then via TXK R-244 to TXK VORTAC.

TAKE-OFF OBSTACLES:

Rwy 31L, tree 1229' from DER, 730' right of centerline, 28' AGL/637' MSL. Trmsn pole 3403' from DER, 1399' right of centerline, 86' AGL/708' MSL. Multiple trees beginning 928' from DER, 724' left of centerline, up to 55' AGL/654' MSL.

Rwy 35R, multiple buildings beginning 5443' from DER, 202' right of centerline, up to 173' AGL/714' MSL.

SC-2, 31 MAY 2012 to 28 JUN 2012

SC-2, 31 MAY 2012 to 28 JUN 2012