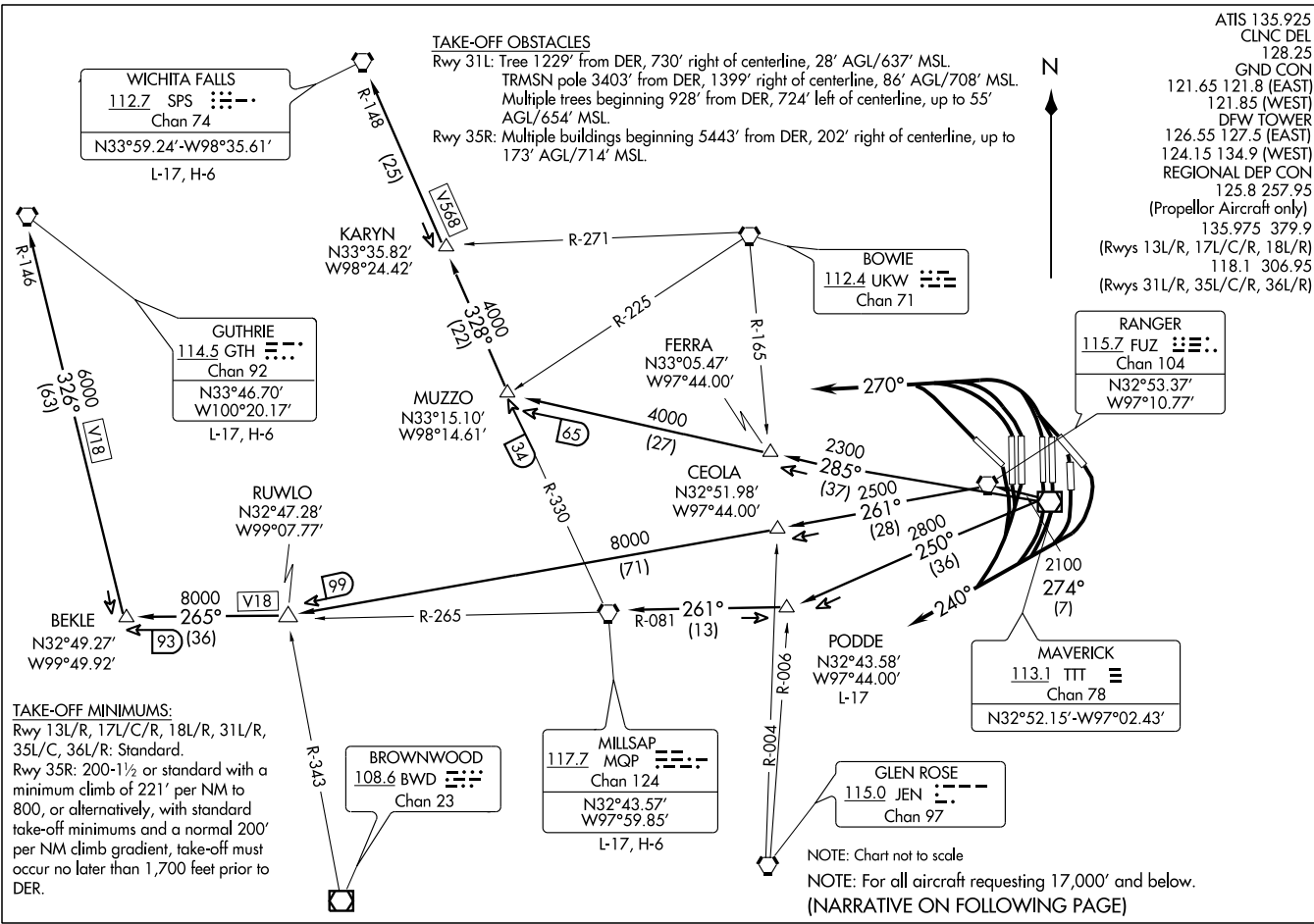


KINGDOM SEVEN DEPARTURE
(KING7.TTT) 11293

DALLAS-FORT WORTH, TEXAS
DALLAS-FORT WORTH INTL (DFW)



(KING7.TTT) 11293

DALLAS-FORT WORTH INTL (DFW)
DALLAS-FORT WORTH, TEXAS



DEPARTURE ROUTE DESCRIPTION

JETS

Jets departing DFW must contact clearance delivery for departure instructions.

PROPS

TAKE-OFF RUNWAYS 13L/R, 17L/C/R, 18L/R: Fly heading 240°. Thence....

TAKE-OFF RUNWAYS 31L/R, 35L/C/R, 36L/R: Fly heading 270°. Thence....

.... Expect vectors to appropriate route, maintain 2,000' and expect filed altitude 10 minutes after departure.

GUTHRIE TRANSITION (KING7.GTH): (For all aircraft landing within Lubbock terminal area or proceeding westbound via V-18 to GTH VORTAC). From over TTT VOR/DME via TTT R-274 to FUZ VORTAC, then via FUZ R-261 to RUWLO INT, then via MQP R-265 to BEKLE INT, then via GTH R-146 to GTH VORTAC.

MILLSAP TRANSITION (KING7.MQP): (For all aircraft overflying the MQP VORTAC westbound via V-18 or direct). From over TTT VOR/DME via TTT R-250 to PODDE INT, then via MQP R-081 to MQP VORTAC.

PODDE TRANSITION (KING7.PODDE): (ATC assigned.) From over TTT VOR/DME via TTT R-250 to PODDE INT.

WICHITA FALLS TRANSITION (KING7.SPS): (For all aircraft landing within Wichita Falls terminal area or overflying the SPS VORTAC). From over TTT VOR/DME via TTT R-285 to MUZZO INT, then via SPS R-148 to SPS VORTAC.

SC-2, 31 MAY 2012 to 28 JUN 2012

SC-2, 31 MAY 2012 to 28 JUN 2012