

DENVER, COLORADO


AL-9077 (FAA)

RNAV (GPS) RWY 26

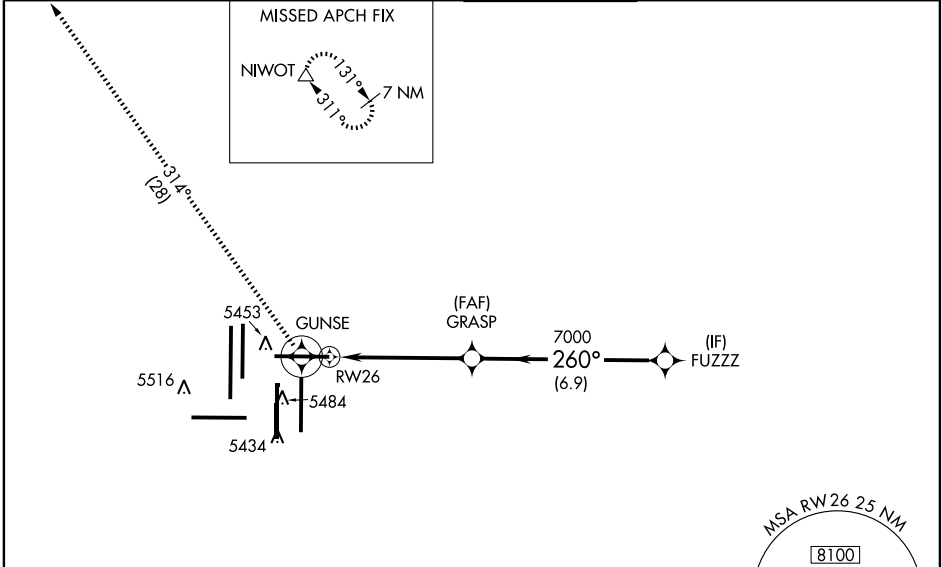
DENVER INTL (DEN)

APP CRS 260°	Rwy Idg 12000 TDZE 5306 Apt Elev 5431
------------------------	--

NA GPS or RNP-0.3 required. DME/DME RNP-0.3 NA. Baro-VNAV NA below -25°C (-13°F). For inoperative MALSR increase LNAV/VNAV Cat D visibility to RVR 5000.

MALSR  MISSED APPROACH: Climb to 11000 via 260° course to GUNSE WP, then via 314° track to NIWOT WP and hold.

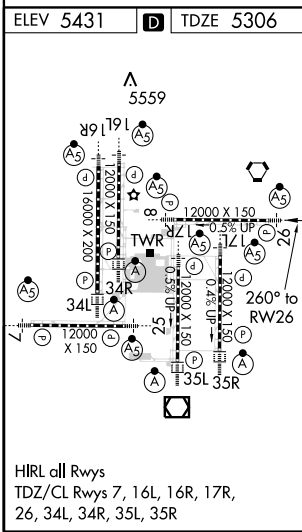
ATIS ARR 125.6 379.9 DEP 134.025	DENVER APP CON 119.3 307.3 120.35 379.3 (NORTH) (SOUTH)	DENVER TOWER 124.3 239.275	GND CON 121.85 377.1	CLNC DEL 118.75
--	--	--------------------------------------	--------------------------------	---------------------------


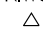


SW-1, 31 MAY 2012 to 28 JUN 2012

SW-1, 31 MAY 2012 to 28 JUN 2012

RADAR REQUIRED



11000	GUNSE	314° tr	NIWOT	*or as assigned by ATC	FUZZ
260° crs					
# LNAV only	GRASP		FUZZ		
# 1.3 NM to RW26	7000		9000*		
RW26	260°		GS 3.00° TCH 55		
1.3	3.8 NM	6.9 NM			
CATEGORY	A	B	C	D	
GLS PA DA	NA				
LNAV/VNAV DA	5580/24 274 (200-½)			5580/40 274 (200-¾)	
LNAV MDA	5760/24 454 (400-½)		5760/40 454 (400-¾)		5760/50 454 (400-1)
CIRCLING	NA				

DENVER, COLORADO
Orig 12096

39°52'N-104°40'W

DENVER INTL (DEN)

RNAV (GPS) RWY 26