

DENVER, COLORADO

AL-9077 (FAA)

RNAV (GPS) RWY 25

DENVER INTL (DEN)

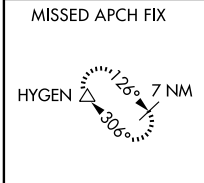
APP CRS 260°	Rwy Idg 12000
	TDZE 5352
	Apt Elev 5431

DME/DME RNP-0.3 NA.

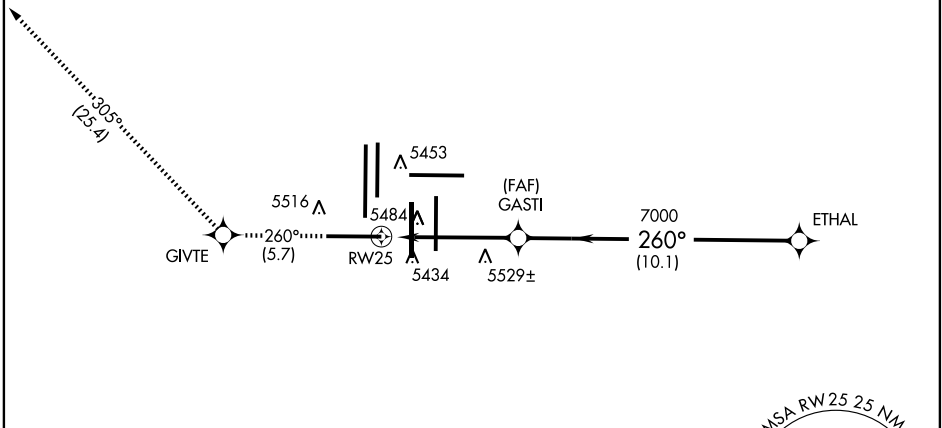


MISSED APPROACH: Climb to 12000 via 260° course to GIVTE WP, then via 305° track to HYGEM WP and hold.

ATIS ARR 125.6 379.9 DEP 134.025	DENVER APP CON 119.3 307.3 120.35 379.3 (NORTH) (SOUTH)	DENVER TOWER 132.35 273.55	GND CON 127.5 379.175	CLNC DEL 118.75
--	--	--------------------------------------	---------------------------------	---------------------------

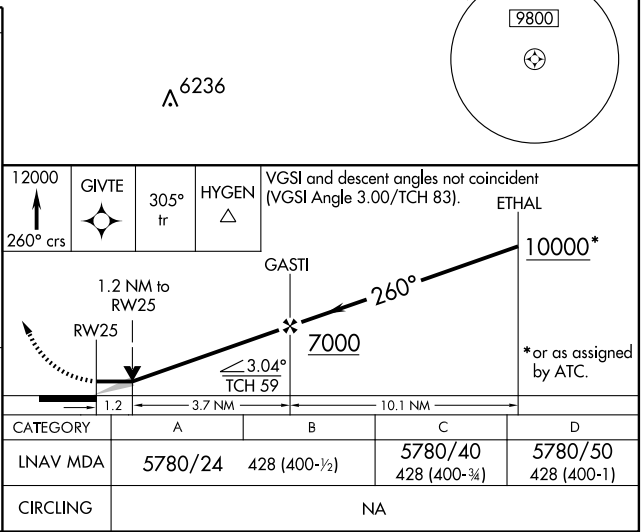
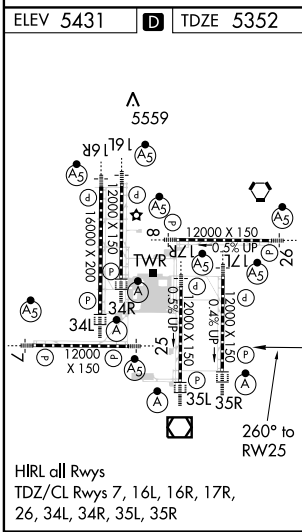


RADAR REQUIRED



SW-1, 31 MAY 2012 to 28 JUN 2012

SW-1, 31 MAY 2012 to 28 JUN 2012



DENVER, COLORADO
Orig-A 12152

39°52'N-104°40'W

RNAV (GPS) RWY 25

DENVER INTL (DEN)