

RNAV (GPS) RWY 17L

DENVER INTL (DEN)

APP CRS 170°	Rwy Idg 12000 TDZE 5335 Apt Elev 5431
------------------------	------------------------------------------------------------------

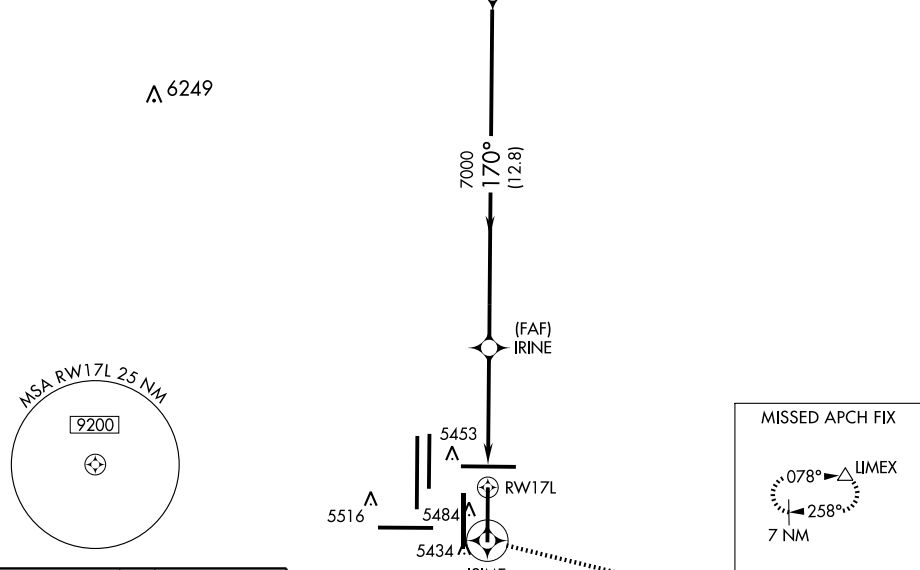
NA GPS or RNP-0.3 required. DME/DME RNP-0.3 NA. Baro-VNAV NA below -25°C (-13°F). For inoperative MALSR increase LNAV CAT D visibility to RVR 6000.



MISSED APPROACH: Climb to 10000 via 170° course to ISIME WP, then via 093° track to LIMEX WP and hold.

ATIS ARR 125.6 379.9 DEP 134.025	DENVER APP CON 119.3 307.3 120.35 379.3 (NORTH) (SOUTH)	DENVER TOWER 124.3 239.275	GND CON 121.85 377.1	CLNC DEL 118.75
------------------------------------------------------	----------------------------------------------------------------------	--------------------------------------	--------------------------------	---------------------------

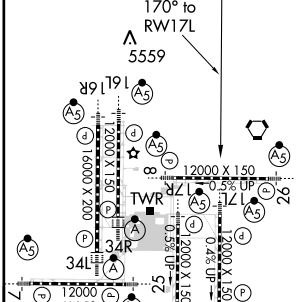
RADAR REQUIRED



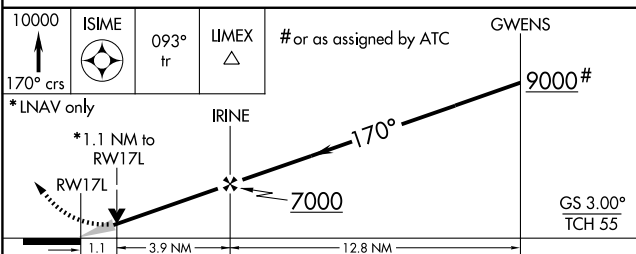
SW-1, 31 MAY 2012 to 28 JUN 2012

SW-1, 31 MAY 2012 to 28 JUN 2012

ELEV 5431	D	TDZE 5335
-----------	----------	-----------



HIRL all Rwys
TDZ/CL Rwys 7, 16L, 16R, 17R,
26, 34L, 34R, 35L, 35R



10000	ISIME	093° tr	LIMEX	# or as assigned by ATC	GWENS
170° crs					9000#
*LNAV only					
	*1.1 NM to RWY17L	IRINE		170°	7000
	1.1	3.9 NM	12.8 NM		GS 3.00° TCH 55
CATEGORY	A	B	C	D	
GLS PA DA	NA				
LNAV/VNAV DA	5700/40		365 (300-¾)		
LNAV MDA	5720/24		385 (300-½)		5720/50 385 (300-1)
CIRCLING	NA				