

DENVER, COLORADO

AL-9077 (FAA)

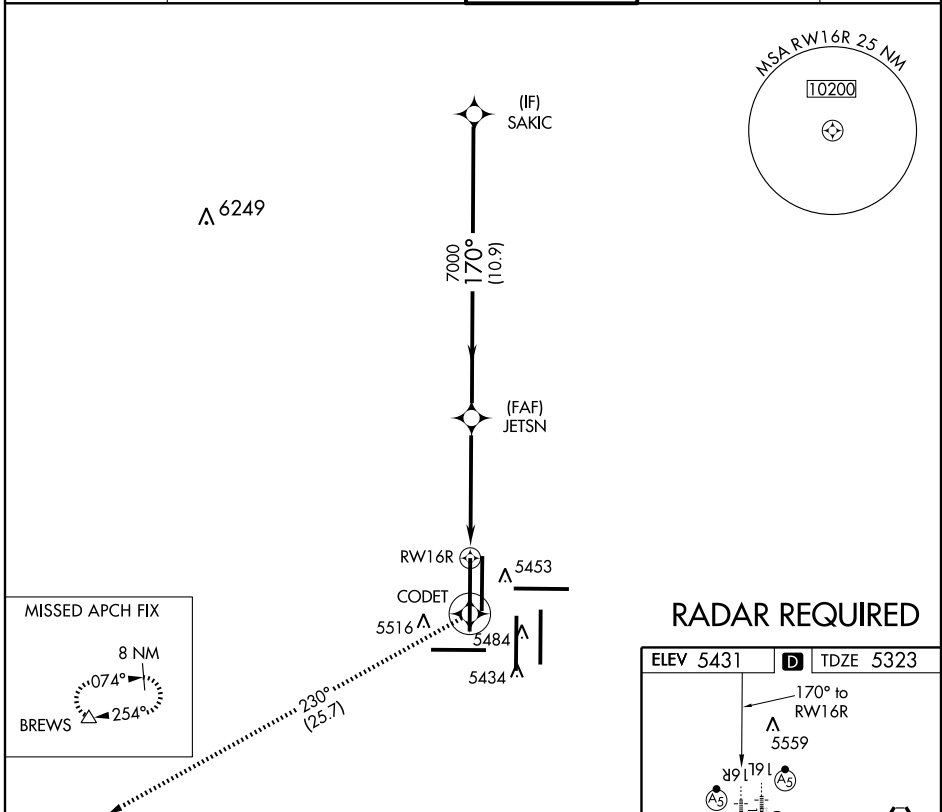
RNAV (GPS) RWY 16R

DENVER INTL (DEN)

APP CRS 170°	Rwy Idg 16000
	TDZE 5323
	Apt Elev 5431

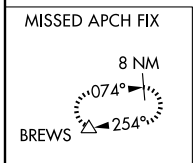
NA GPS or RNP-0.3 required. DME/DME RNP-0.3 NA.	MALSR 	MISSED APPROACH: Climb to 13000 direct CODET WP and via 230° track to BREWS WP and hold.		

ATIS ARR 125.6 379.9 DEP 134.025	DENVER APP CON 119.3 307.3 120.35 379.3 (NORTH) (SOUTH)	DENVER TOWER 135.3 351.95	GND CON 127.5 379.175	CLNC DEL 118.75
--	--	-------------------------------------	---------------------------------	---------------------------

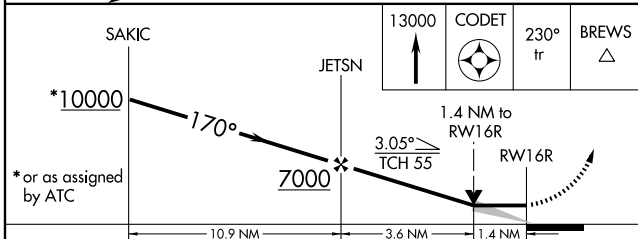
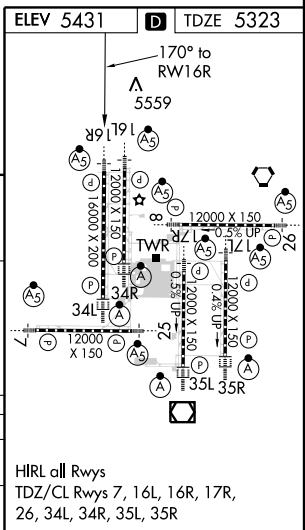


SW-1, 31 MAY 2012 to 28 JUN 2012

SW-1, 31 MAY 2012 to 28 JUN 2012



RADAR REQUIRED



CATEGORY LNAV MDA CIRCLING	A 5820/24	B 497 (400-½)	C 5820/40 497 (400-¾)	D 5820/50 497 (400-1)
CIRCLING: NA				

DENVER, COLORADO
Orig-A 12096

39°52'N-104°40'W

RNAV (GPS) RWY 16R

DENVER INTL (DEN)