

DENVER, COLORADO

AL-9077 (FAA)

RNAV (GPS) RWY 16L

DENVER INTL (DEN)

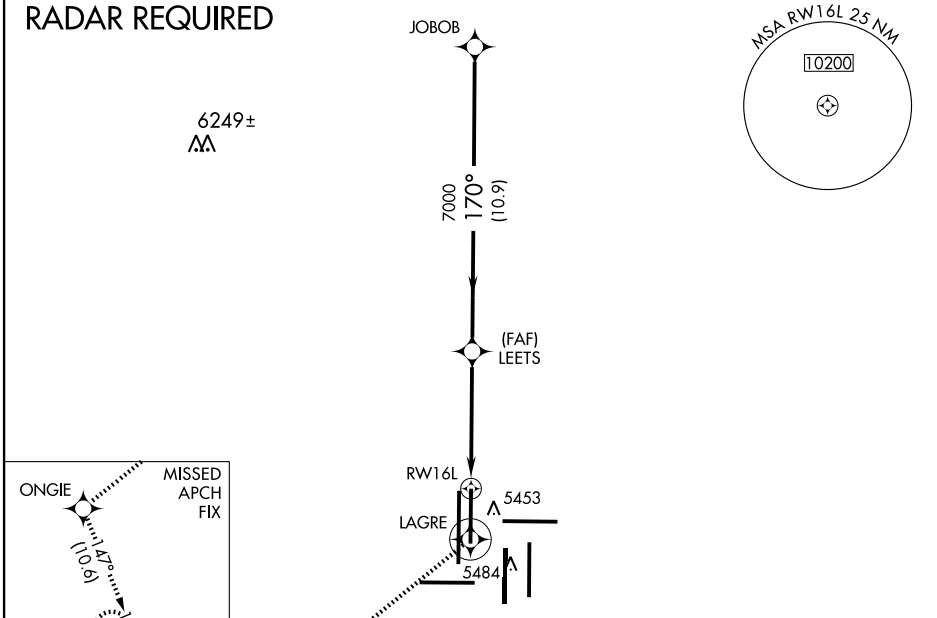
APP CRS	Rwy Idg	12000
170°	TDZE	5354
	Apt Elev	5431

<p>▽ NA</p> <p>GPS or RNP-0.3 required. DME/DME RNP-0.3 NA.</p>	<p>MALSRL</p>
---	---------------

MISSED APPROACH: Climb to 12000 via 170° course to LAGRE WP, then 220° track to ONGIE WP, then 147° track to SIGNE WP and hold.

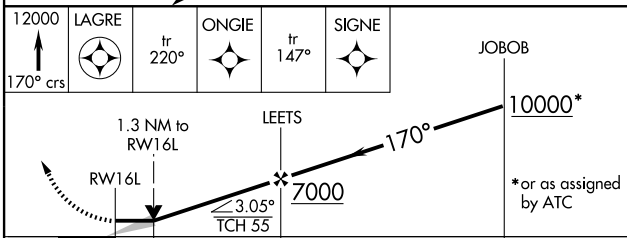
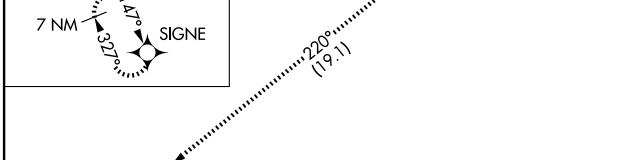
<p>ATIS</p> <p>ARR 125.6 379.9</p> <p>DEP 134.025</p>	<p>DENVER APP CON</p> <p>119.3 307.3 120.35 379.3</p> <p>(NORTH) (SOUTH)</p>	<p>DENVER TOWER</p> <p>135.3 351.95</p>	<p>GND CON</p> <p>127.5 379.175</p>	<p>CLNC DEL</p> <p>118.75</p>
---	---	--	--	--------------------------------------

RADAR REQUIRED

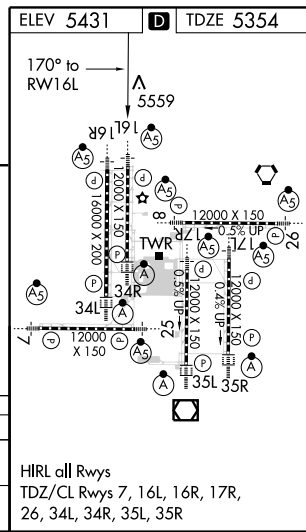


SW-1, 31 MAY 2012 to 28 JUN 2012

SW-1, 31 MAY 2012 to 28 JUN 2012



12000	LAGRE	tr 220°	ONGIE	tr 147°	SIGNE	JOBOB
170° crs						10000*
	1.3 NM to RW16L		LEETS			
		3.6 NM		10.9 NM		
CATEGORY	A	B	C	D		
LNAV MDA	5820/24	466 (400-½)	5820/40	5820/50		
			466 (400-¾)	466 (400-1)		
CIRCLING	NA					



DENVER, COLORADO
Orig-A 12096

39°52'N-104°40'W

RNAV (GPS) RWY 16L

DENVER INTL (DEN)

HIRL all Rws
TDZ/CL Rws 7, 16L, 16R, 17R,
26, 34L, 34R, 35L, 35R