

# RNAV (GPS) RWY 7

DENVER INTL (DEN)

APP CRS	Rwy Idg	<b>12000</b>
<b>079°</b>	TDZE	<b>5348</b>
	Apt Elev	<b>5431</b>

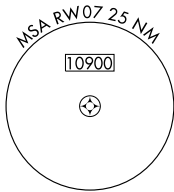
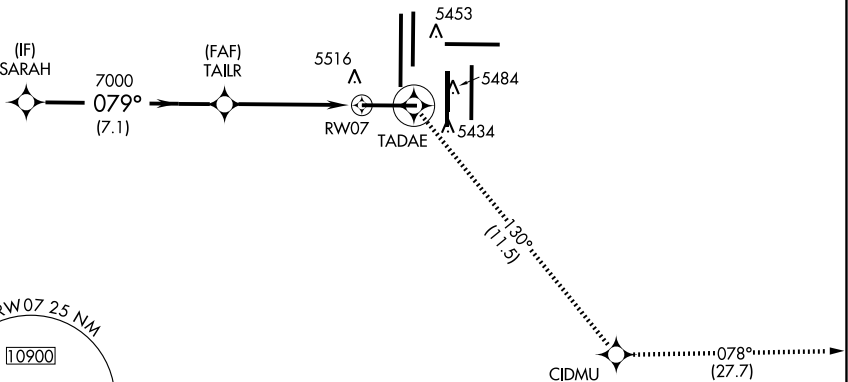
**NA** GPS or RNP-0.3 required. DME/DME RNP-0.3 NA.  
Baro/VNAV NA below -25°C (-13°F).  
For inoperative MALS R increase LNAV Cat D visibility to RVR 6000.

**MALS R** MISSED APPROACH: Climb to 10000 via 079° course to TADAE WP then 130° track to CIDMU WP then 078° track to LIMEX WP and hold.

ATIS	DENVER APP CON			DENVER TOWER	GND CON	CLNC DEL
ARR <b>125.6 379.9</b>	<b>119.3 307.3</b>	<b>120.35 379.3</b>		<b>132.35 273.55</b>	<b>127.5 379.175</b>	<b>118.75</b>
DEP <b>134.025</b>	(NORTH)	(SOUTH)				

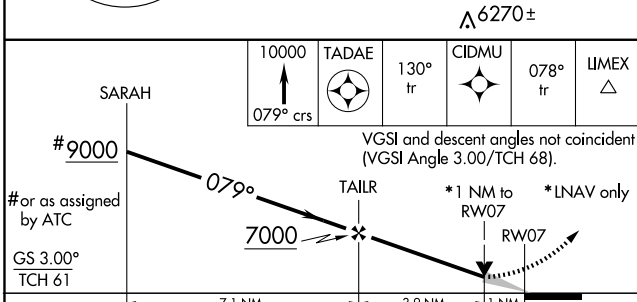
## RADAR REQUIRED

MISSED APCH FIX

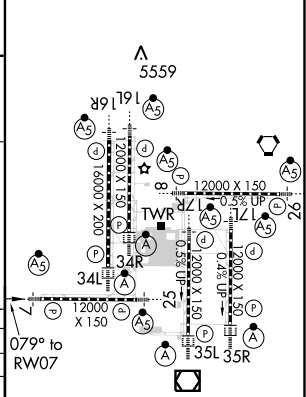


SW-1, 31 MAY 2012 to 28 JUN 2012

SW-1, 31 MAY 2012 to 28 JUN 2012



ELEV 5431	<b>D</b>	TDZE 5348
-----------	----------	-----------



CATEGORY	A	B	C	D
GLS/PA DA	NA			
LNAV/VNAV DA	5740/40 392 (400-¾)			
LNAV MDA	5740/24 392 (400-½)		5740/50 392 (400-1)	
CIRCLING	NA			

HIRL all Rwys  
TDZ/CL Rwys 7, 16L, 16R, 17R,  
26, 34L, 34R, 35L, 35R