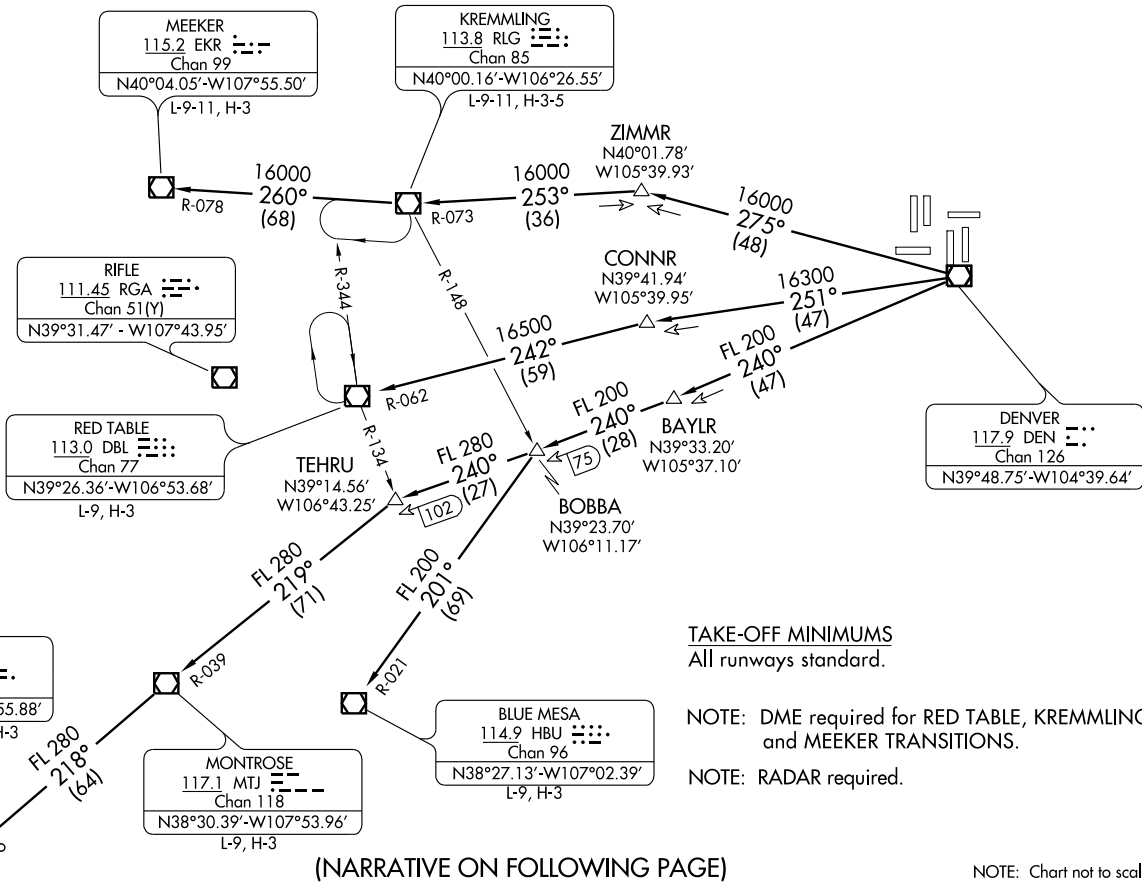


ATIS 134.025
CLNIC DEL
118.75
DENVER DEP CON
126.1 360.75



(NARRATIVE ON FOLLOWING PAGE)

NOTE: Chart not to scale.



DEPARTURE ROUTE DESCRIPTION

Fly assigned heading for radar vectors to assigned transition. Maintain 10000 feet or **ATC assigned lower altitude**. Expect filed altitude 10 minutes after departure.

LOST COMMUNICATIONS: If no transmissions are received within one minute after departure, maintain assigned heading until 7000 feet, then climb to filed altitude via direct DEN VOR/DME, thence via assigned transition. If filed altitude is above 10000 feet, cross DEN VOR/DME at or above 11000 feet.

BLUE MESA (HI) TRANSITION (ROCKI7.HBU): From over DEN VOR/DME via DEN R-240 and HBU R-021 to HBU VOR/DME.

DOVE CREEK (HI) TRANSITION (ROCKI7.DVC): From over DEN VOR/DME via DEN R-240 and MTJ R-039 to MTJ VOR/DME, then via MTJ R-218 and DVC R-035 to DVC VORTAC.

KREMLING TRANSITION (ROCKI7.RLG): From over DEN VOR/DME via DEN R-275 and RLG R-073 to RLG VOR/DME.

MEEKER TRANSITION (ROCKI7.EKR): From over DEN VOR/DME via DEN R-275 and RLG R-073 to RLG VOR/DME, then via RLG R-260 and EKR R-078 to EKR VOR/DME.

MONTROSE TRANSITION (ROCKI7.MTJ): From over DEN VOR/DME via DEN R-240 and MTJ R-039 to MTJ VOR/DME.

RED TABLE TRANSITION (ROCKI7.DBL): From over DEN VOR/DME via DEN R-251 and DBL R-062 to DBL VOR/DME.

TAKE-OFF OBSTACLE NOTES

RWY 8: Multiple trees beginning 115' from DER, 444' right of centerline, up to 100' AGL/5389' MSL.
RWY 16L: Tower 4722' from DER, 1359' left of centerline, 153' AGL/5473' MSL.

Antenna on OL tower 4746' from DER, 1358' left of centerline, 153' AGL/5473' MSL.

RWY 17L: Multiple trees beginning 247' from DER, 543' right of centerline, up to 100' AGL/5489' MSL.
RWY 17R: Multiple trees beginning 1457' from DER, 759' right of centerline, up to 100' AGL/5529' MSL.
RWY 25: Multiple trees beginning 303' from DER, 557' right of centerline, up to 100' AGL/5439' MSL.
RWY 34L: Multiple trees beginning 273' from DER, 537' right of centerline, up to 100' AGL/5399' MSL.
RWY 34R: Multiple trees beginning 471' from DER, 580' right of centerline, up to 100' AGL/5449' MSL.
RWY 35L: Terrain beginning 149' from DER, 34' right of centerline, up to 5414' MSL.

SW-1, 31 MAY 2012 to 28 JUN 2012

SW-1, 31 MAY 2012 to 28 JUN 2012