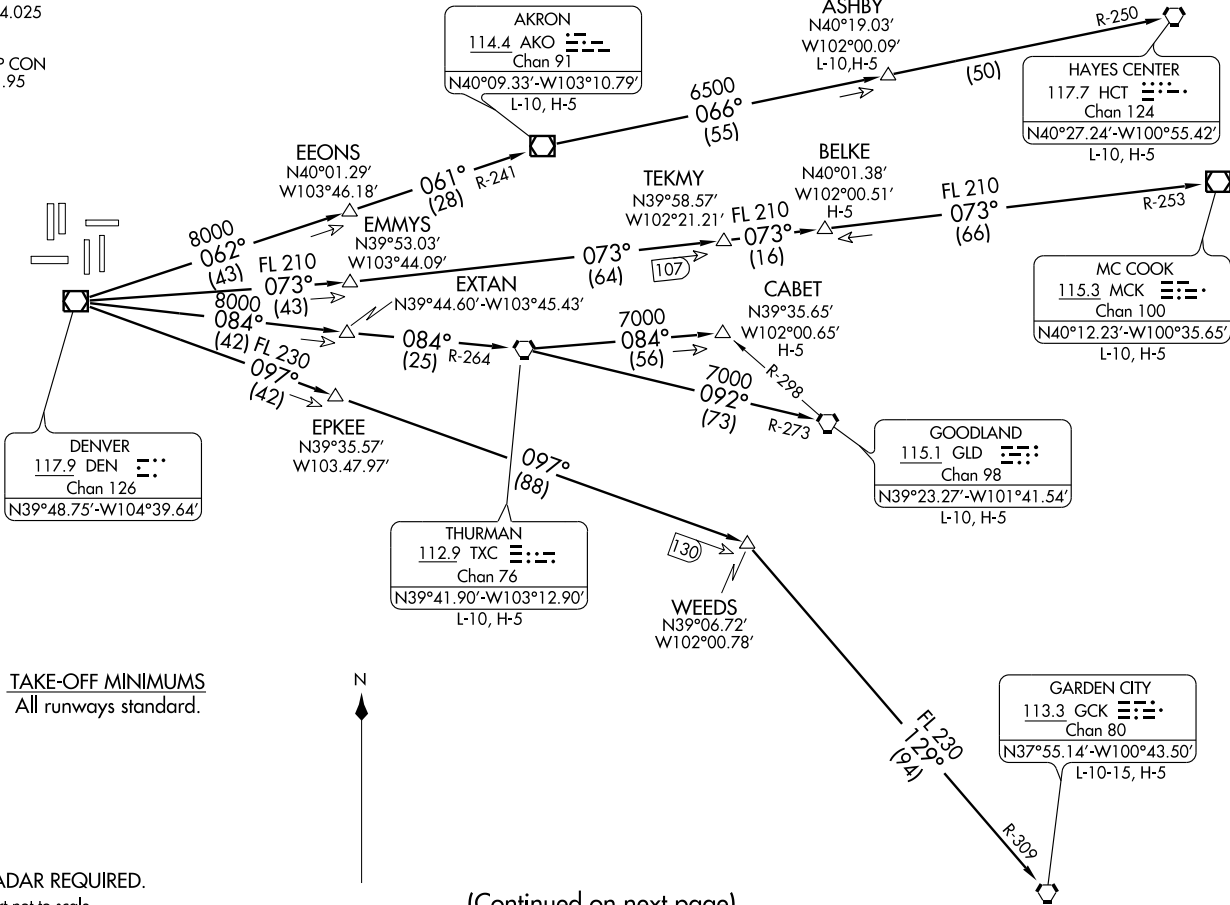


PLAINS FOUR DEPARTURE
(PLAIN4.DEN) 11293

PLAINS FOUR DEPARTURE
(PLAIN4.DEN) 11293

ATIS DEP 134.025
CLNC DEL
118.75
DENVER DEP CON
128.25 371.95



TAKE-OFF MINIMUMS
All runways standard.



NOTE: RADAR REQUIRED.
NOTE: Chart not to scale.

(Continued on next page)



DEPARTURE ROUTE DESCRIPTION

Fly assigned heading for radar vectors to assigned transition. Maintain 10,000 feet or **ATC assigned lower altitude**. Expect filed altitude 10 minutes after departure.

LOST COMMUNICATIONS: If no transmissions are received within one minute after departure, maintain assigned heading until 7,000 feet, then climb to filed altitude via direct DEN VOR/DME, thence via assigned transition. If filed altitude is above 10,000 feet, cross DEN VOR/DME at or above 11,000 feet.

AKRON TRANSITION (PLAIN4.AKO): From over DEN VOR/DME via DEN R-062 and AKO R-241 to AKO VOR/DME.

ASHBY TRANSITION (PLAIN4.ASHBY): From over DEN VOR/DME via DEN R-062 and AKO R-241 to AKO VOR/DME, then via AKO R-066 and HCT R-250 to ASHBY INT.

BELKE TRANSITION (PLAIN4.BELKE): From over DEN VOR/DME via DEN R-073 and MCK R-253 to BELKE INT.

CABET TRANSITION (PLAIN4.CABET): From over DEN VOR/DME via DEN R-084 and TXC R-264 to TXC VORTAC, then via TXC R-084 to CABET INT.

GARDEN CITY TRANSITION (PLAIN4.GCK): From over DEN VOR/DME via DEN R-097 and GCK R-309 to GCK VORTAC.

GOODLAND TRANSITION (PLAIN4.GLD): From over DEN VOR/DME via DEN R-084 and TXC R-264 to TXC VORTAC, then via TXC R-092 and GLD R-273 to GLD VORTAC.

HAYES CENTER TRANSITION (PLAIN4.HCT): From over DEN VOR/DME via DEN R-062 and AKO R-241 to AKO VOR/DME, then via AKO R-066 and HCT R-250 to HCT VORTAC.

MCCOOK TRANSITION (PLAIN4.MCK): From over DEN VOR/DME via DEN R-073 and MCK R-253 to MCK VOR/DME.

THURMAN TRANSITION (PLAIN4.TXC): From over DEN VOR/DME via DEN R-084 and TXC R-264 to TXC VORTAC.

WEEDS TRANSITION (PLAIN4.WEEDS): From over DEN VOR/DME via DEN R-097 to WEEDS INT.

SW-1, 31 MAY 2012 to 28 JUN 2012

SW-1, 31 MAY 2012 to 28 JUN 2012