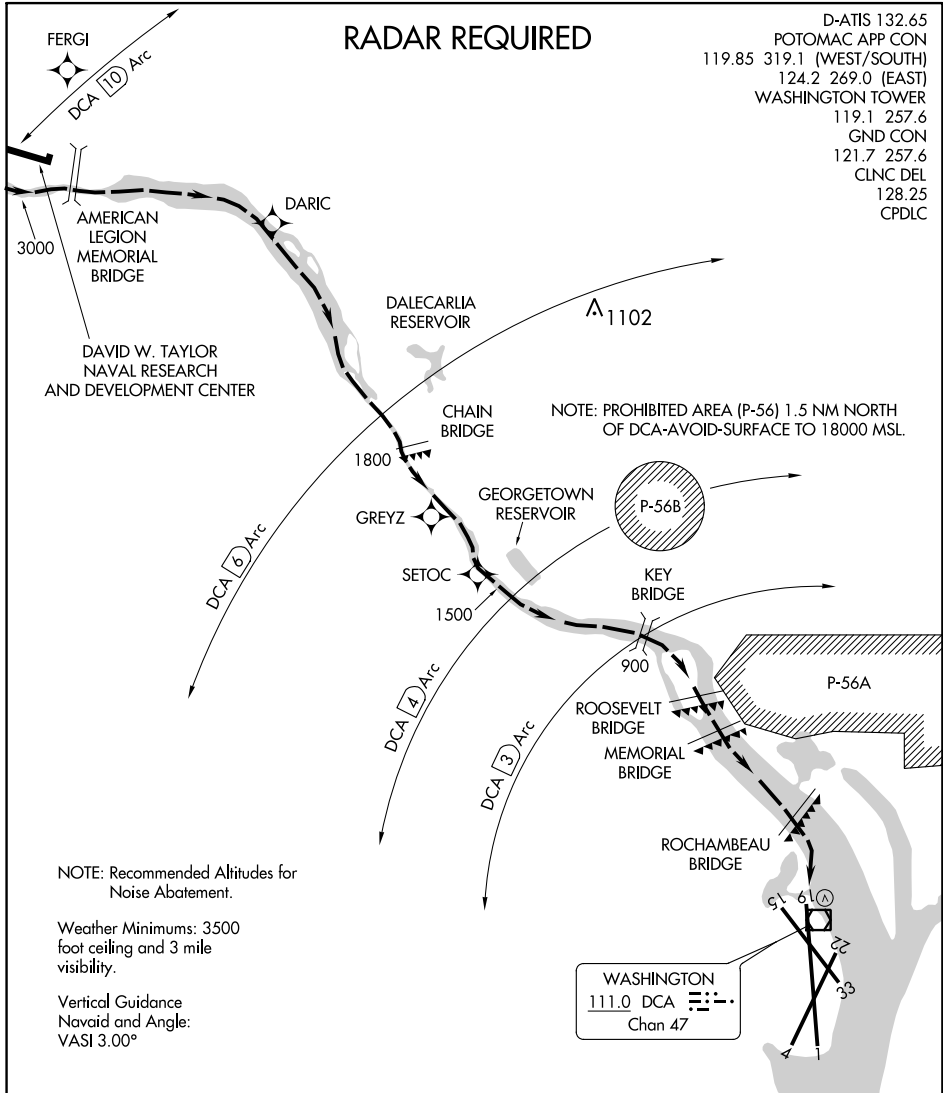


RIVER VISUAL RWY 19

RADAR REQUIRED

D-ATIS 132.65
 POTOMAC APP CON
 119.85 319.1 (WEST/SOUTH)
 124.2 269.0 (EAST)
 WASHINGTON TOWER
 119.1 257.6
 GND CON
 121.7 257.6
 CLNC DEL
 128.25
 CPDLC



NOTE: Recommended Altitudes for Noise Abatement.

Weather Minimums: 3500 foot ceiling and 3 mile visibility.

Vertical Guidance
 Navaid and Angle:
 VASI 3.00°

WASHINGTON
 111.0 DCA
 Chan 47

NE-3, 14 SEP 2017 to 12 OCT 2017

NE-3, 14 SEP 2017 to 12 OCT 2017

1 NM	2	3	4	5	6	7	8
------	---	---	---	---	---	---	---

RIVER VISUAL RWY 19

Aircraft may visually follow the river to the airport, or may proceed via the RNAV (RNP) RWY 19 Approach to SETOC waypoint, then follow the river to the airport.

NOTE: Clearance for visual approach does not authorize penetration of P-56.

RIVER VISUAL RWY 19