

WAAS CH <b>90414</b> <b>W06B</b>	APP CRS <b>059°</b>	Rwy Idg TDZE Apt Elev	<b>7001</b> <b>1007</b> <b>1009</b>
--	------------------------	-----------------------------	---

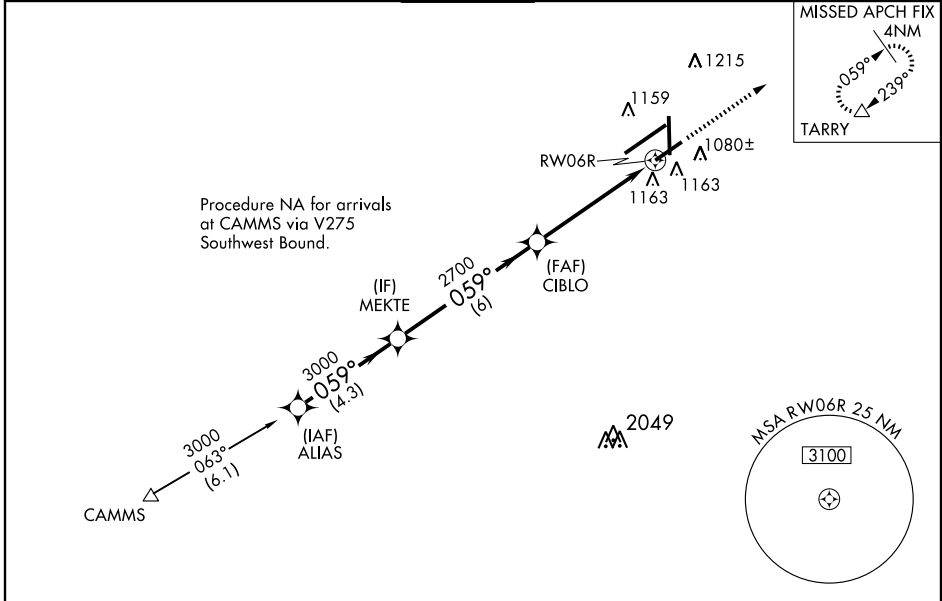
# RNAV (GPS) RWY 6R

DAYTON/ JAMES M. COX DAYTON INTL (DAY)

**ASR** For uncompensated Baro-VNAV systems, LNAV/VNAV NA below -17°C (2°F) or above 47°C (116°F). DME/DME RNP-0.3 NA. Visibility reduction by helicopters NA. Simultaneous approach authorized with Rwy 6L. LNAV procedure NA during simultaneous operations. Use of FD or AP providing RNAV track guidance required during simultaneous operations.

MISSED APPROACH: Climb to 3000 direct TARRY and hold.

ATIS <b>125.8</b>	COLUMBUS APP CON <b>118.425 294.5</b>	DAYTON TOWER <b>119.9 257.8</b>	GND CON <b>121.9</b>	CLNC DEL <b>121.75</b>
----------------------	--	------------------------------------	-------------------------	---------------------------



EC-2, 31 MAY 2012 to 28 JUN 2012

EC-2, 31 MAY 2012 to 28 JUN 2012

Procedure Turn NA	3000	TARRY	
ALIAS	MEKTE	CIBLO	RWY 6R
3000	3000	2700	
GS 3.00°	059°	059°	
TCH 53	4.3 NM	6 NM	3.6 NM
CATEGORY	A	B	C
LPV DA	1257-3/4		250 (300-3/4)
LNAV/ VNAV DA	1494-13/4		487 (500-13/4)
LNAV MDA	1520-1	513 (600-1)	1520-1 1/2
CIRCLING	1560-1	551 (600-1)	1560-1 1/2

