

WAAS CH 42913 W06A	APP CRS 059°	Rwy Idg 10900 TDZE 998 Apt Elev 1009
--	------------------------	---

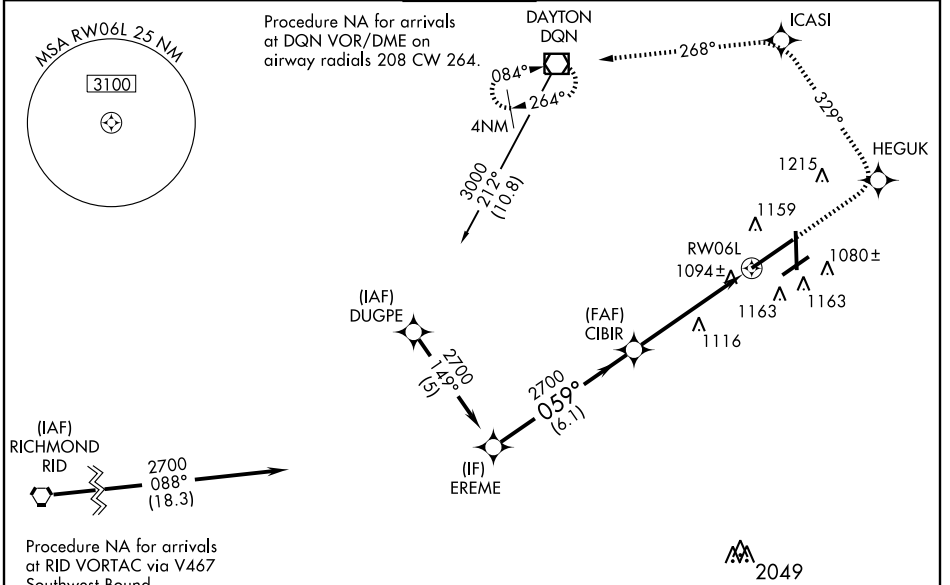
RNAV (GPS) RWY 6L

DAYTON/JAMES M. COX DAYTON INTL (DAY)

ASR For inoperative ALSF-2, increase LNAV Cat D visibility to RVR 6000. For uncompensated Baro-VNAV systems, LNAV/VNAV NA below -17°C (2°F) or above 47°C (116°F). DME/DME RNP-0.3 NA. Simultaneous approach authorized with Rwy 6R. LNAV procedure NA during simultaneous operations. Use of FD or AP providing RNAV track guidance required during simultaneous operations.

ALSF-2
 MISSED APPROACH: Climb to 3000 direct HEGUK and via track 329° to ICASI and via track 268° to DQN VOR/DME and hold.

ATIS 125.8	COLUMBUS APP CON 118.425 294.5	DAYTON TOWER 119.9 257.8	GND CON 121.9	CLNC DEL 121.75
----------------------	--	---	-------------------------	---------------------------



EC-2, 31 MAY 2012 to 28 JUN 2012

EC-2, 31 MAY 2012 to 28 JUN 2012

Procedure Turn NA	VGSI and RNAV glide-path not coincident (VGSI Angle 3.00/TCH 67).	3000	HEGUK	ICASI	DQN
				tr 329°	tr 268°
EREME					* LNAV only
2700	059°				
GS 3.00°					
TCH 51					
	6.1 NM	4 NM	1.1 NM		
CATEGORY	A	B	C	D	
LPV DA		1198/24	200 (200-½)		
LNAV/VNAV DA		1366/40	368 (400-¾)		
LNAV MDA	1420/24	422 (500-½)	1420/40 422 (500-¾)	1420/50 422 (500-1)	
CIRCLING	1560-1	551 (600-1)	1560-1½ 551 (600-1½)	1560-2 551 (600-2)	

