

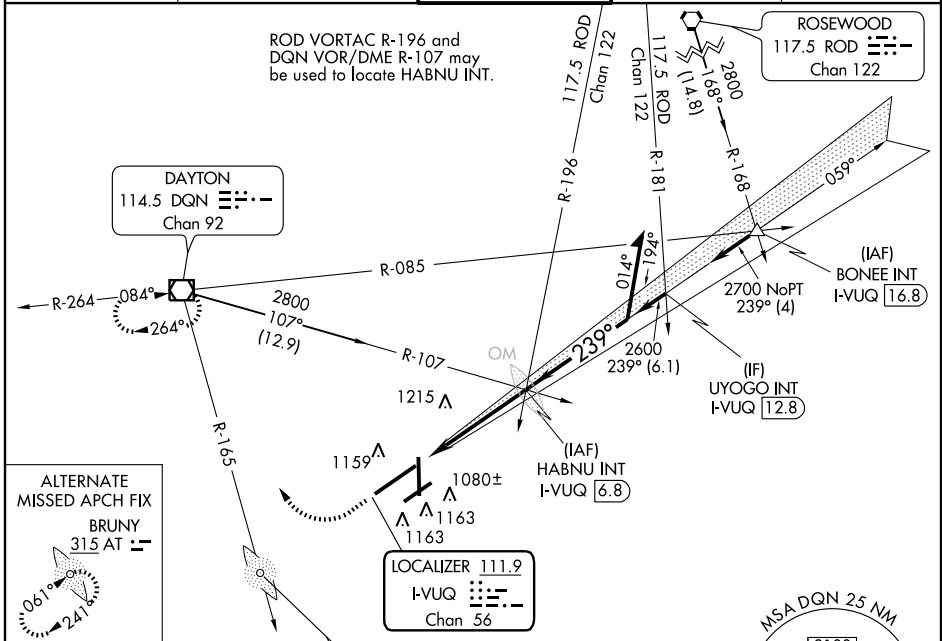
LOC/DME I-VUQ 111.9 Chan 56	APP CRS 239°	Rwy Idg 10900 TDZE 997 Apt Elev 1009
---	------------------------	---

I LS or LOC RWY 24R

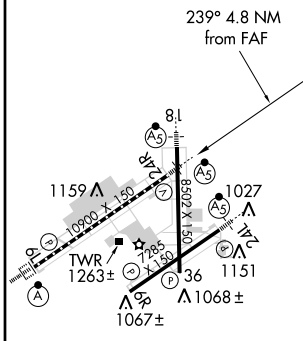
DAYTON/JAMES M. COX DAYTON INTL (DAY)

<p>ASR *RVR 1800 authorized with the use of FD or AP or HUD to DA. Simultaneous approach authorized with Rwy 24L.</p>	<p>MALSR AS</p>	<p>MISSED APPROACH: Climb to 3000 then right turn direct DQN VOR/DME and hold.</p>
--	----------------------------	---

<p>ATIS 125.8</p>	<p>COLUMBUS APP CON 118.425 294.5</p>	<p>DAYTON TOWER 119.9 257.8</p>	<p>GND CON 121.9</p>	<p>CLNC DEL 121.75</p>
-------------------------------------	---	---	--	--



ELEV 1009	D	TDZE 997
-----------	----------	----------



HIRL all Rwys
TDZ/CL Rwy 6L
REIL Rwys 6R and 36

FAF to MAP 4.8 NM					
Knots	60	90	120	150	180
Min:Sec	4:48	3:12	2:24	1:55	1:36

<p>3000</p> <p>↑ LOC Only</p> <p>↑ I-VUQ 3</p> <p>I-VUQ 2</p> <p>2600</p> <p>059°</p> <p>239°</p> <p>2800</p> <p>GS 3.00° TCH 55</p> <p>2600</p> <p>1.1 3.7 NM</p>	<p>HABNU INT I-VUQ 6.8</p> <p>Remain within 10 NM</p>																									
<table border="1"> <thead> <tr> <th>CATEGORY</th> <th>A</th> <th>B</th> <th>C</th> <th>D</th> </tr> </thead> <tbody> <tr> <td>S-ILS 24R</td> <td colspan="4">*1197/24 200 (200-1/2)</td> </tr> <tr> <td>S-LOC 24R</td> <td>1400/24</td> <td>403 (400-1/2)</td> <td>1400/40</td> <td>403 (400-3/4)</td> </tr> <tr> <td>CIRCLING</td> <td>1560-1</td> <td>551 (600-1)</td> <td>1560-1 1/2</td> <td>1560-2</td> </tr> <tr> <td></td> <td></td> <td></td> <td>551 (600-1/2)</td> <td>551 (600-2)</td> </tr> </tbody> </table>	CATEGORY	A	B	C	D	S-ILS 24R	*1197/24 200 (200-1/2)				S-LOC 24R	1400/24	403 (400-1/2)	1400/40	403 (400-3/4)	CIRCLING	1560-1	551 (600-1)	1560-1 1/2	1560-2				551 (600-1/2)	551 (600-2)	
CATEGORY	A	B	C	D																						
S-ILS 24R	*1197/24 200 (200-1/2)																									
S-LOC 24R	1400/24	403 (400-1/2)	1400/40	403 (400-3/4)																						
CIRCLING	1560-1	551 (600-1)	1560-1 1/2	1560-2																						
			551 (600-1/2)	551 (600-2)																						

EC-2, 31 MAY 2012 to 28 JUN 2012

EC-2, 31 MAY 2012 to 28 JUN 2012