

DAYTON, OHIO

AL-107 (FAA)

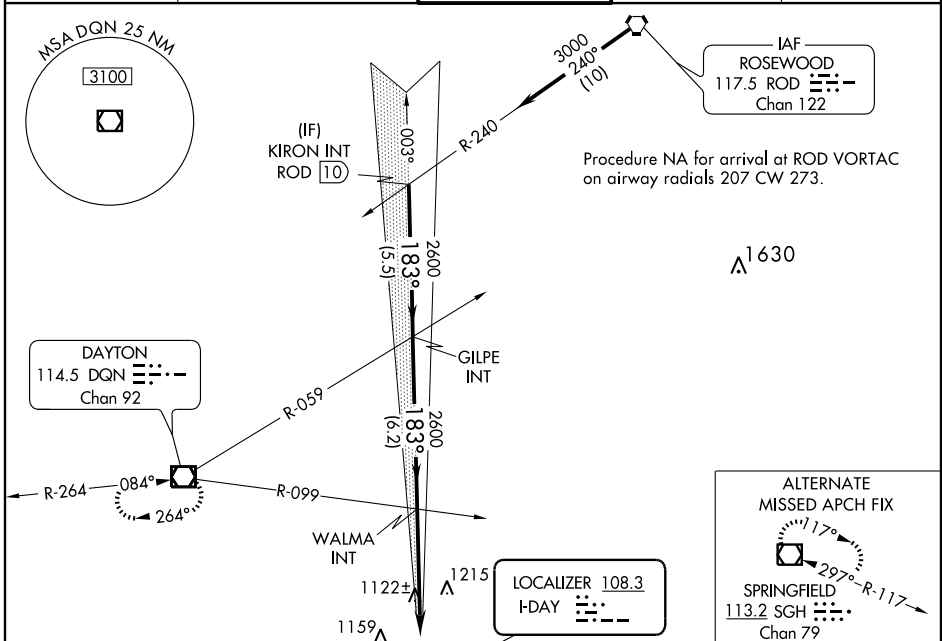
# ILS or LOC RWY 18

DAYTON/JAMES M. COX DAYTON INTL (DAY)

LOC I-DAY <b>108.3</b>	APP CRS <b>183°</b>	Rwy Idg <b>8502</b>
		TDZE <b>995</b>
		Apt Elev <b>1009</b>

<b>ASR</b> * RVR 1800 authorized with the use of FD or AP or HUD to DA.	<b>MALSR</b> 	<b>MISSED APPROACH:</b> Climb to 3100 then right turn direct DQN VOR/DME and hold.

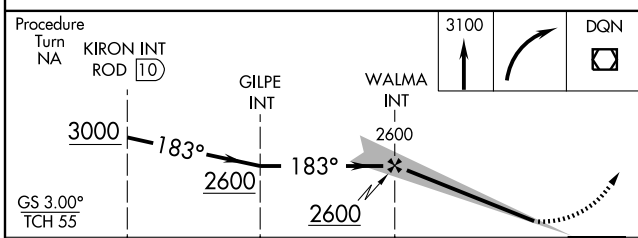
<b>ATIS</b> <b>125.8</b>	<b>COLUMBUS APP CON</b> <b>118.425 294.5</b>	<b>DAYTON TOWER</b> <b>119.9 257.8</b>	<b>GND CON</b> <b>121.9</b>	<b>CINC DEL</b> <b>121.75</b>
-----------------------------	---	---	--------------------------------	----------------------------------



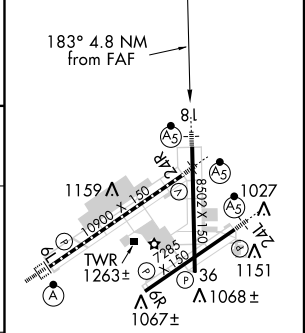
EC-2, 31 MAY 2012 to 28 JUN 2012

EC-2, 31 MAY 2012 to 28 JUN 2012

Procedure Turn NA KIRON INT ROD (10)	3100 	DQN 
---	----------	---------



ELEV 1009	<b>D</b>	TDZE 995
-----------	----------	----------



CATEGORY	A	B	C	D
S-ILS 18	* 1195/24 200 (200-½)			
S-LOC 18	1380/24	385 (400-½)	1380/40	385 (400-¾)
CIRCLING	1560-1	551 (600-1)	1560-1½	551 (600-2)

HIRL all Rws				
TDZ/CL Rwy 6L				
REIL Rws 6R and 36				
FAF to MAP 4.8 NM				
Knots	60	90	120	150 180
Min:Sec	4:48	3:12	2:24	1:55 1:36

DAYTON, OHIO  
Amdt 10 12152

39°54'N-84°13'W

DAYTON/JAMES M. COX DAYTON INTL (DAY)

# ILS or LOC RWY 18