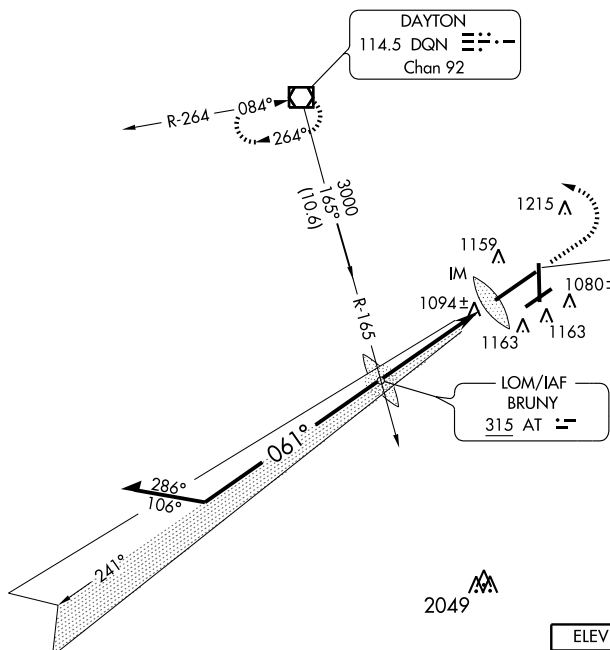


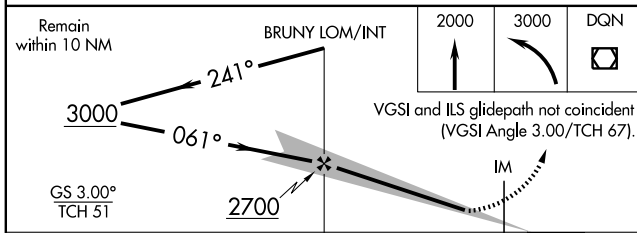
LOC I-ATD <b>108.9</b>	APP CRS <b>061°</b>	Rwy Idg <b>10900</b> TDZE <b>998</b> Apt Elev <b>1009</b>
---------------------------	------------------------	---

**ILS or LOC RWY 6L**  
DAYTON/JAMES M. COX DAYTON INTL (DAY)

ASR Simultaneous approach authorized with Rwy 6R.	ALSIF-2	MISSED APPROACH: Climb to 2000 then climbing left turn to 3000 direct DGN VOR/DME and hold.		
ATIS <b>125.8</b>	COLUMBUS APP CON <b>118.425 294.5</b>	DAYTON TOWER <b>119.9 257.8</b>	GND CON <b>121.9</b>	CINC DEL <b>121.75</b>



**ADF or RADAR REQUIRED**



ELEV 1009	D	TDZE 998
-----------	---	----------

1159 A

TWR 1263±

10900 X 150

1027 A

1151 A

1067±

1068±

061° 5 NM from FAF

HIRL all Rwys  
TDZ/CL Rwy 6L  
REIL Rwys 6R and 36

FAF to MAP 5 NM

Knots	60	90	120	150	180
Min:Sec	5:00	3:20	2:30	2:00	1:40

EC-2, 31 MAY 2012 to 28 JUN 2012

EC-2, 31 MAY 2012 to 28 JUN 2012