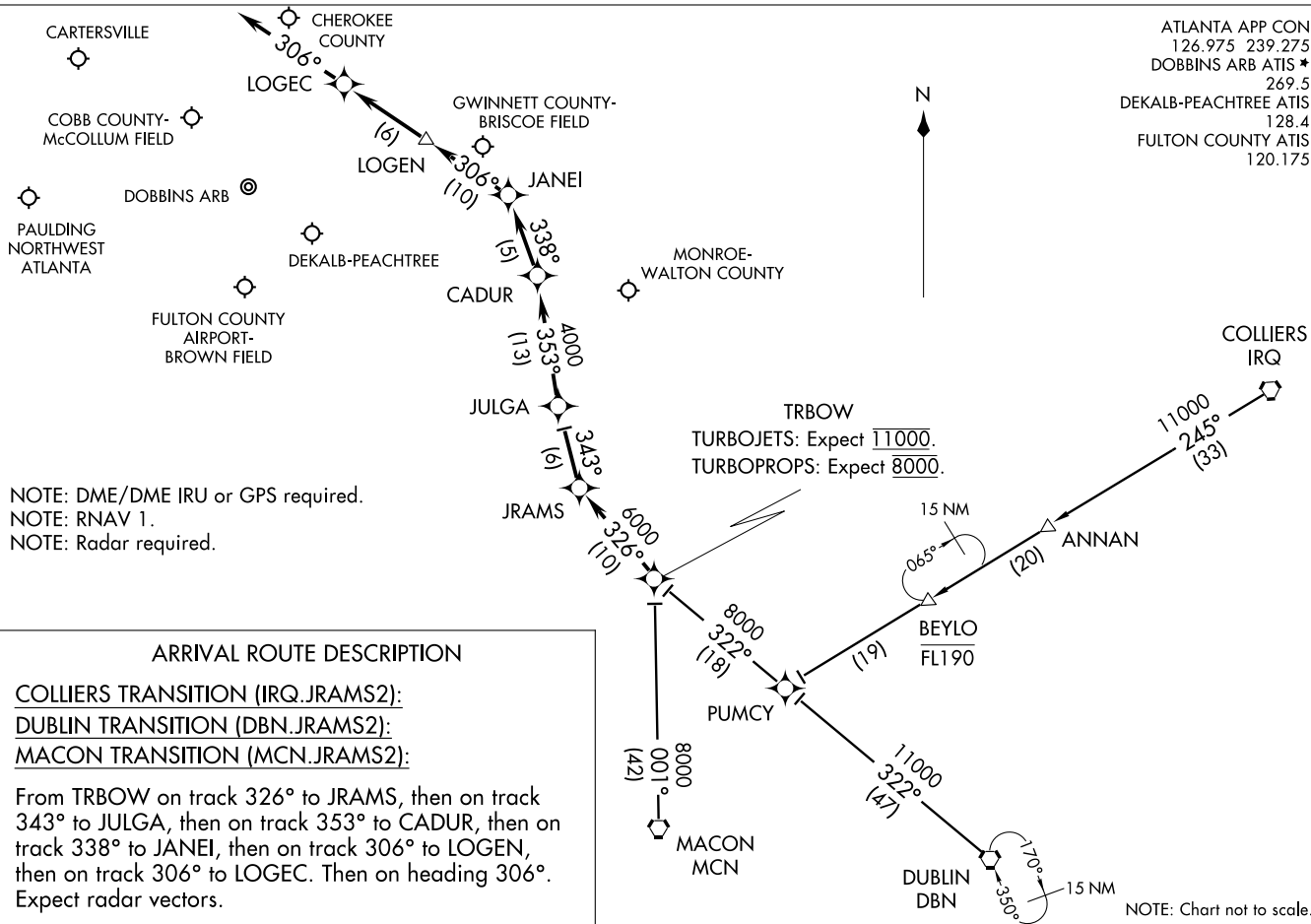


JRAMS TWO ARRIVAL (RNAV)
(JRAMS.JRAMS2) 11237

(JRAMS.JRAMS2) 11237
JRAMS TWO ARRIVAL (RNAV)

ATLANTA APP CON 126.975 239.275
DOBBINS ARB ATIS * 269.5
DEKALB-PEACHTREE ATIS 128.4
FULTON COUNTY ATIS 120.175



NOTE: DME/DME IRU or GPS required.
NOTE: RNAV 1.
NOTE: Radar required.

ARRIVAL ROUTE DESCRIPTION

COLLIERS TRANSITION (IRQ.JRAMS2):
DUBLIN TRANSITION (DBN.JRAMS2):
MACON TRANSITION (MCN.JRAMS2):

From TRBOW on track 326° to JRAMS, then on track 343° to JULGA, then on track 353° to CADUR, then on track 338° to JANEI, then on track 306° to LOGEN, then on track 306° to LOGEC. Then on heading 306°. Expect radar vectors.

ATLANTA, GEORGIA

ATLANTA, GEORGIA

ST-469 (FAA)