

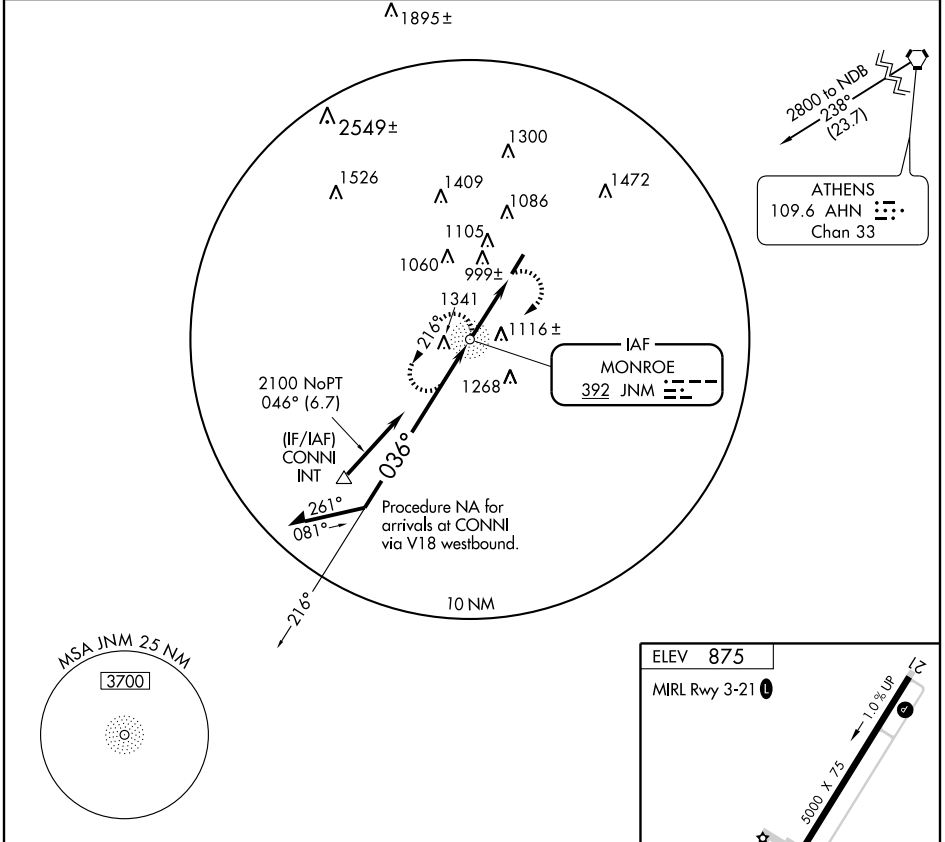
NDB JNM <b>392</b>	APP CRS <b>036°</b>	Rwy Idg TDZE Apt Elev	<b>N/A</b> <b>N/A</b> <b>875</b>
-----------------------	------------------------	-----------------------------	--

**NDB-A**

MONROE-WALTON COUNTY (D73)

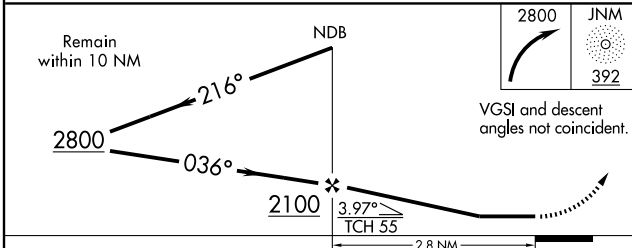
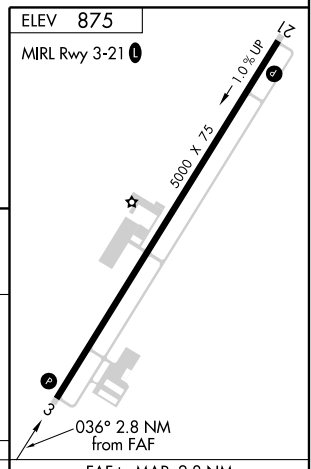
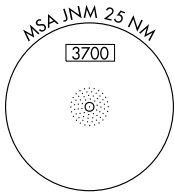
<p>▼ <b>NA</b></p> <p>When local altimeter setting not received, use Athens altimeter setting and increase all MDA 60 feet and Cat C visibility 1/4 mile.</p>	<p><b>MISSED APPROACH:</b> Climbing right turn to 2800 direct JNM NDB and hold, continue climb-in-hold to 2800.</p>
---	---

<p>AWOS-A <b>392</b></p>	<p>ATLANTA APP CON <b>126.975 239.275</b></p>	<p>CTAF <b>122.9 0</b></p>
------------------------------	---	--------------------------------



SE-4, 31 MAY 2012 to 28 JUN 2012

SE-4, 31 MAY 2012 to 28 JUN 2012



CATEGORY	A	B	C	D	FAF to MAP 2.8 NM												
CIRCLING	1460-1	585 (600-1)	1460-1½ 585 (600-1½)	NA	<table border="1"> <tr> <td>Knots</td> <td>60</td> <td>90</td> <td>120</td> <td>150</td> <td>180</td> </tr> <tr> <td>Min:Sec</td> <td>2:48</td> <td>1:52</td> <td>1:24</td> <td>1:07</td> <td>0:56</td> </tr> </table>	Knots	60	90	120	150	180	Min:Sec	2:48	1:52	1:24	1:07	0:56
Knots	60	90	120	150	180												
Min:Sec	2:48	1:52	1:24	1:07	0:56												

**NDB-A**

WAAS CH <b>93523</b> <b>W03A</b>	APP CRS <b>035°</b>	Rwy Idg <b>5000</b> THRE <b>875</b> Apt Elev <b>875</b>
--	------------------------	--

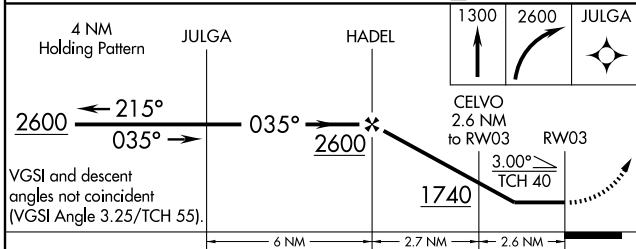
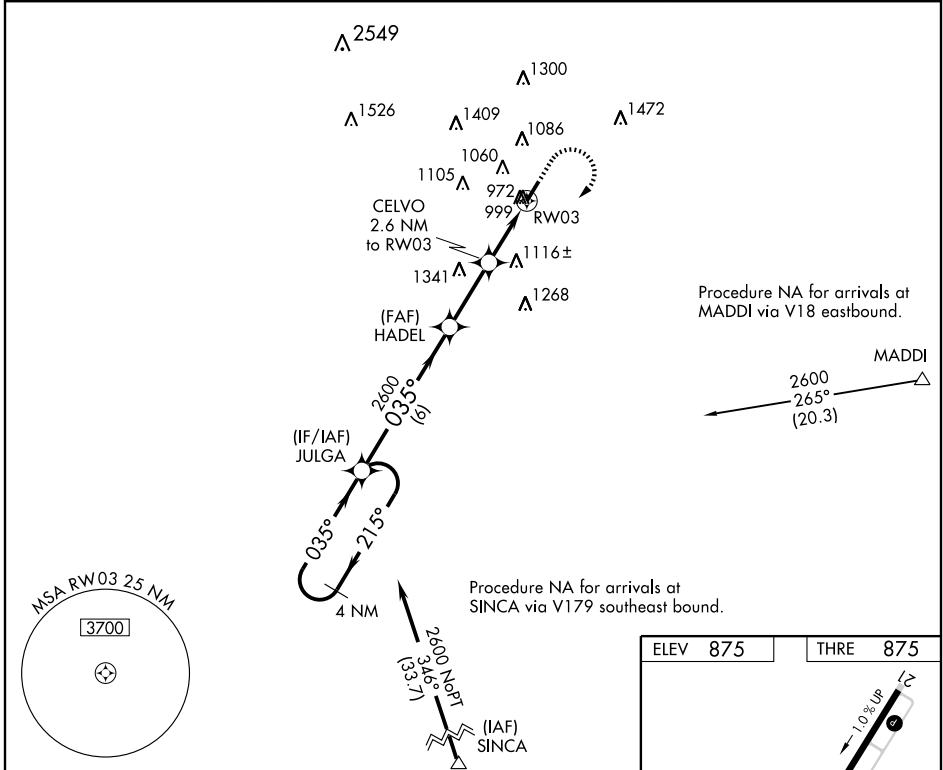
# RNAV (GPS) RWY 3

MONROE-WALTON COUNTY (D73)

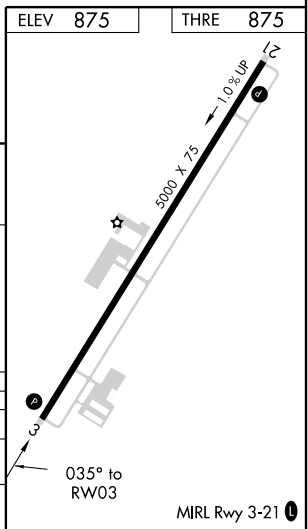
**▽** When VGSI inoperative, straight-in/circling to Rwy 3 procedure NA at night.  
**△** NA DME/DME RNP-0.3 NA. Visibility reduction by helicopters NA.  
 When local altimeter not received, use Athens altimeter setting and increase all MDA 60 feet and increase LP, LNAV and Circling Cat C visibility ¼ mile.

**MISSED APPROACH:** Climb to 1300 then climbing right turn to 2600 direct JULGA and hold.

AWOS-A <b>392</b>	ATLANTA APP CON <b>126.975 239.275</b>	CTAF <b>122.90</b>
----------------------	---	-----------------------



CATEGORY	A	B	C	D
LP MDA	1240-1 365 (400-1)			NA
LNAV MDA	1260-1	385 (400-1)	1260-1 1/8 385 (400-1 1/8)	NA
CIRCLING	1460-1	585 (600-1)	1460-1 1/2 585 (600-1 1/2)	NA



SE-4, 31 MAY 2012 to 28 JUN 2012

SE-4, 31 MAY 2012 to 28 JUN 2012