

APP CRS	Rwy Idg	<b>3498</b>
<b>142°</b>	TDZE	<b>1610</b>
	Apt Elev	<b>1610</b>

# RNAV (GPS) RWY 14

MANITOWISH WATERS (D25)

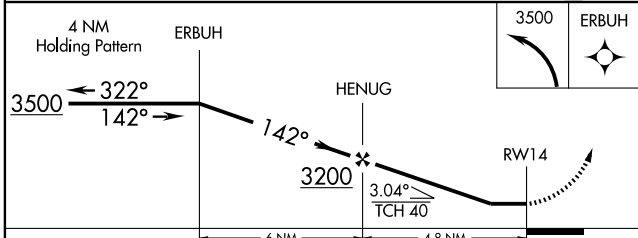
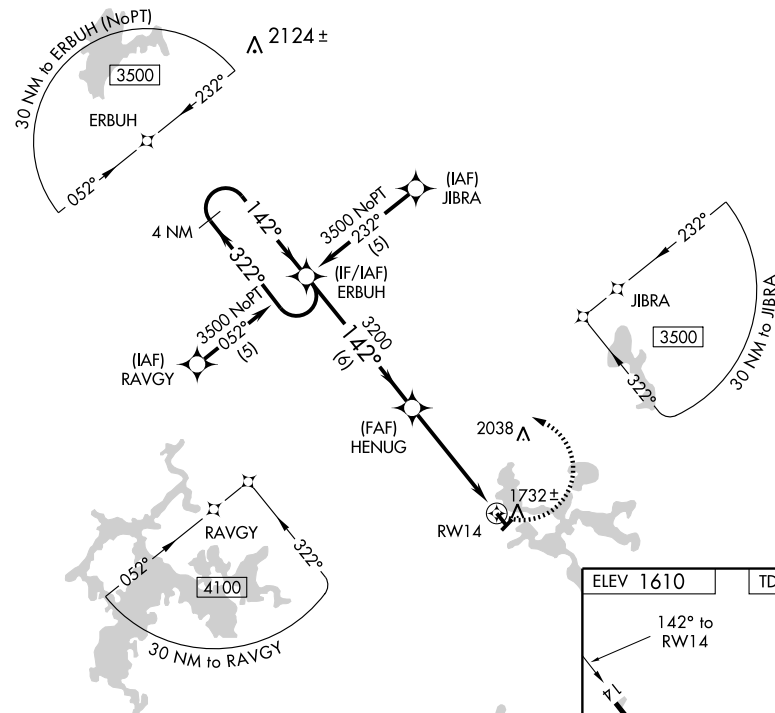
**▽** DME/DME RNP-0.3 NA. Procedure NA at night.  
**△** NA Visibility reduction by helicopters NA. Circling NA to Rwy 4 and 22.  
 Use Minocqua-Woodruff altimeter setting. When not received, use Rhinelander altimeter setting and increase all MDA 60 feet and all Cat C visibilities 1/4 mile.

**MISSED APPROACH:** Climbing left turn to 3500 direct ERBUH and hold.

MINOCQUA-WOODRUFF AWOS-3 <b>121.125</b>	MINNEAPOLIS CENTER <b>133.65 281.5</b>	GCO <b>121.725</b>	UNICOM <b>122.8 (CTAF)</b> <b>0</b>
--	---	-----------------------	--

EC-3, 31 MAY 2012 to 28 JUN 2012

EC-3, 31 MAY 2012 to 28 JUN 2012



ELEV 1610	TDZE 1610
-----------	-----------

MIRL Rwy 14-32 **0**

CATEGORY	A	B	C	D
RNAV MDA	2160-1	550 (600-1)	2160-1½ 550 (600-1½)	NA
CIRCLING	2160-1	550 (600-1)	2160-1½ 550 (600-1½)	NA

APP CRS <b>322°</b>	Rwy Idg <b>3498</b>
	TDZE <b>1610</b>
	Apt Elev <b>1610</b>

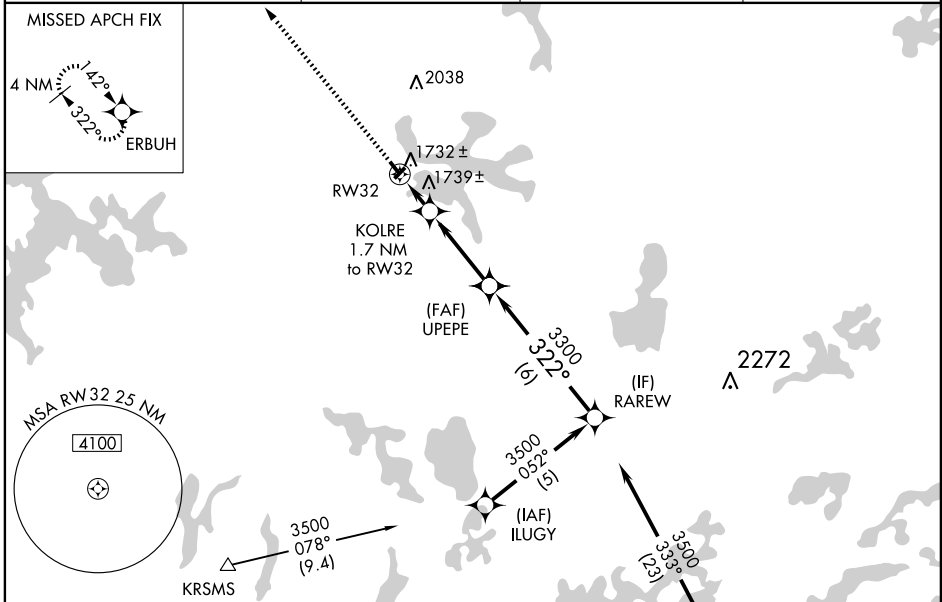
# RNAV (GPS) RWY 32

MANITOWISH WATERS (D25)

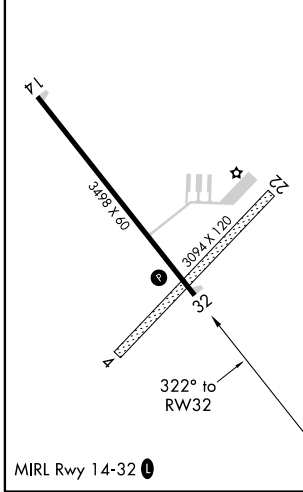
When VGSI inop, Straight-in/Circling Rwy 32 procedure NA at night.  
 DME/DME RNP-0.3 NA. Visibility reduction by helicopters NA.  
 Use Minocqua-Woodruff altimeter setting. When not received, use Rhinelander altimeter setting and increase all MDA 60 feet.  
 Circling NA to Rwy 4 and 22.

MISSED APPROACH: Climb to 3500 direct ERBUH and hold.

MINOCQUA-WOODRUFF AWOS-3 <b>121.125</b>	MINNEAPOLIS CENTER <b>133.65 281.5</b>	GCO <b>121.725</b>	UNICOM <b>122.8 (CTAF)</b>
--	---	-----------------------	-------------------------------

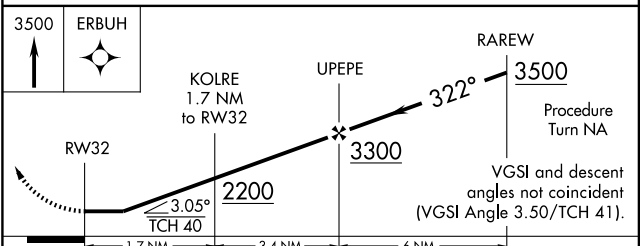


ELEV 1610	TDZE 1610
-----------	-----------



Procedure NA for arrival on RHI VORTAC  
 airway radials 331 CW 021.

(IAF) RHINELANDER RHI



CATEGORY	A	B	C	D
LNNAV MDA	2040-1	430 (500-1)	2040-1¼ 430 (500-1¼)	NA
CIRCLING	2080-1	470 (500-1)	2080-1½ 470 (500-1½)	NA

EC-3, 31 MAY 2012 to 28 JUN 2012

EC-3, 31 MAY 2012 to 28 JUN 2012