

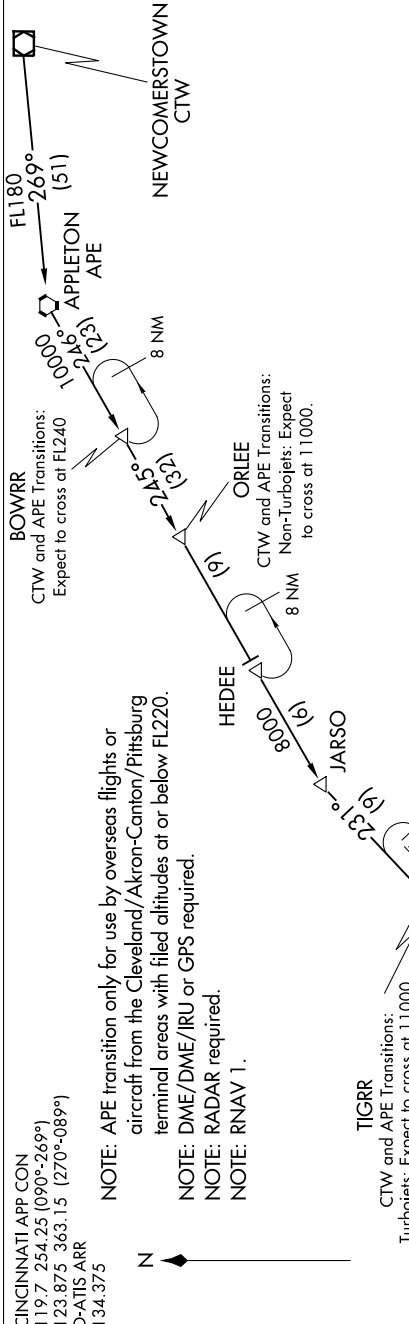
SE-1, 09 NOV 2017 TO 07 DEC 2017

CINCINNATI APP CON
119.7 254.25 (090°-269°)
123.875 363.15 (270°-089°)
D-ATIS ARR
134.375

NOTE: APE transition only for use by overseas flights or aircraft from the Cleveland/Akron-Canton/Pittsburg terminal areas with filed altitudes at or below FL220.
NOTE: DME/DME/IRU or GPS required.
NOTE: RADAR required.
NOTE: RNAV 1.



TIGRR
CTW and APE Transitions:
Turbobojts: Expect to cross at 11000.
Non-Turbobojts: Expect to cross at 9000.



APPLETON TRANSITION (APE.TIGRR2):
NEWCOMERSTOWN TRANSITION (CTW.TIGRR2):

From over TIGRR on track 231° to CHARZ, thence as depicted to HAVLO.

Landing South, East, West: Expect radar vectors to final approach course prior to BACAS.

Landing North: Expect radar vectors to final approach course prior to HAVLO.

LOST COMMUNICATIONS:

At HAVLO fly heading 270°, maintain 6000, intercept and execute ILS RWY 36R approach. If unable, proceed direct to CVG VORTAC and hold, NE, RT, 239° inbound, maintain 6000.

At CHARZ fly heading 270°, maintain 6000, intercept and execute ILS RWY 18L approach. If unable, proceed direct to CVG VORTAC and hold, NE, RT, 239° inbound, maintain 6000.

SE-1, 09 NOV 2017 TO 07 DEC 2017

NOTE: Chart not to scale.