


APP CRS	Rwy Idg	10000
004°	TDZE	896
	Apt Elev	896

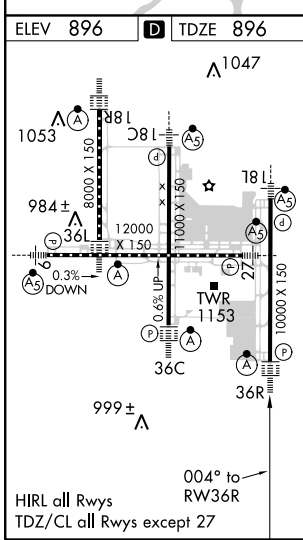
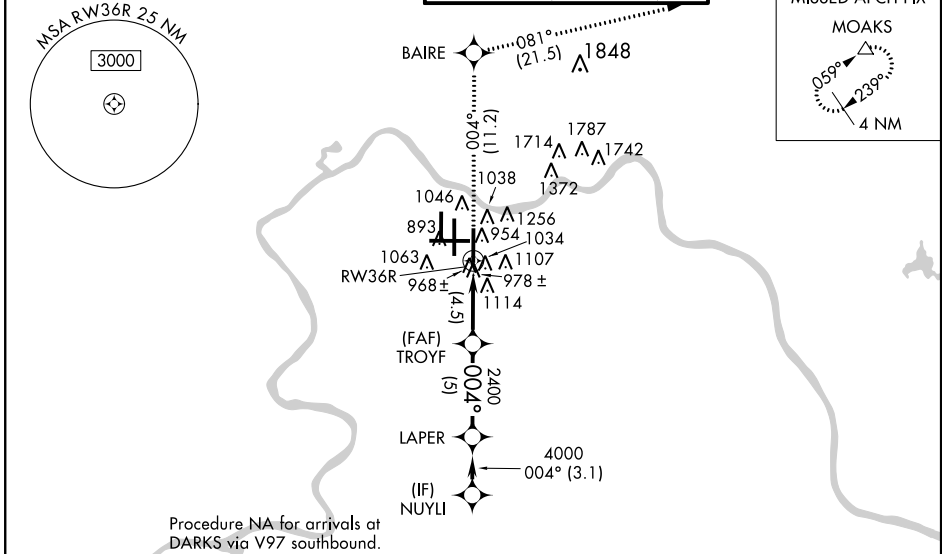
RNAV (RNP) Z RWY 36R

CINCINNATI/NORTHERN KENTUCKY INTL (CVG)

V GPS Required. For uncompensated Baro-VNAV systems, procedure NA below **NA-16°C (4°F)** or above **47°C (116°F)**. For inoperative ALSF, increase RNP 0.16 and RNP 0.20 visibility to RVR 6000, RNP 0.30 visibility to 1½. Simultaneous approach authorized with Rwy 36L/C. Use of FD or AP providing RNAV track guidance required during simultaneous operations.

ALSF-2  MISSED APPROACH: Climb to 3000 via 004° track to BAIRE and via 081° track to MOAKS and hold.

D-ATIS	CINCINNATI APP CON	CINCINNATI TOWER	GND CON	CLNC DEL
ARR 134.375 DEP 135.3	119.7 254.25 (090°-269°) 123.875 363.15 (270°-089°)	118.975 360.85 (RWY 18L/36R) 118.3 (RWYS 18C/36C, 09/27) 133.325 (RWY 18R/36L)	121.7	127.175



Procedure NA for arrivals at DARKS via V97 southbound.

Procedure NA for arrivals at FLM VOR/DME via V517 southeast bound.

3000	tr 004°	BAIRE	tr 081°	MOAKS	VGSI and RNAV glidepath not coincident (VGSI Angle 3.00/TCH 70). NUYYLI
					LAPER
					5000
					4000
					2400
					Procedure Turn NA
					GP 3.00° TCH 55

CATEGORY	A	B	C	D
RNP 0.16 DA		1284/40	388 (400-¾)	
RNP 0.20 DA		1295/50	399 (400-1)	
RNP 0.30 DA		1329/50	433 (500-1)	

AUTHORIZATION REQUIRED

SE-1, 12 OCT 2017 to 09 NOV 2017

SE-1, 12 OCT 2017 to 09 NOV 2017