

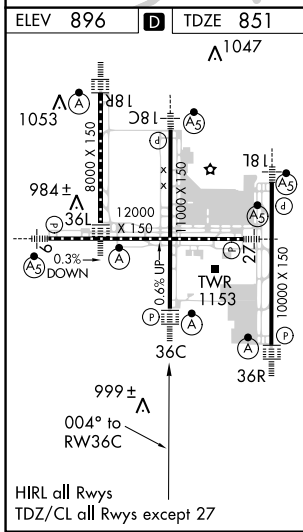
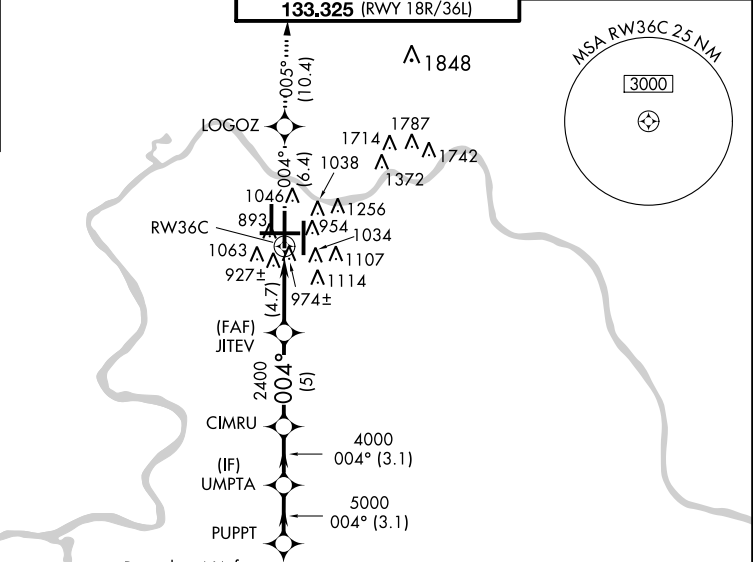
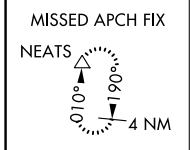
APP CRS	Rwy Idg	<b>11000</b>
<b>004°</b>	TDZE	<b>851</b>
	Apt Elev	<b>896</b>

# RNAV (RNP) Z RWY 36C

CINCINNATI/NORTHERN KENTUCKY INTL (CVG)

<b>NA</b>	For uncompensated Baro-VNAV systems, Procedure NA below -16°C (4°F) or above 47°C (116°F). For inoperative ALSF, increase RNP 0.24 visibility to 1½, RNP 0.30 visibility 1¾. Simultaneous approach authorized with Rwy 36L/R. Use of FD or AP providing RNAV track guidance required during simultaneous operations.	ALSF-2 	MISSED APPROACH: Climb to 3000 via 004° track to LOGOZ and via 005° track to NEATS and hold.
-----------	--	------------	--

D-ATIS ARR <b>134.375</b> DEP <b>135.3</b>	CINCINNATI APP CON <b>119.7 254.25</b> (090°-269°) <b>123.875 363.15</b> (270°-089°)	CINCINNATI TOWER <b>118.975 360.85</b> (RWY 18L/36R) <b>118.3</b> (RWYS 18C/36C, 09/27) <b>133.325</b> (RWY 18R/36L)	GND CON <b>121.7</b>	CLNC DEL <b>127.175</b>
---	--	---	-------------------------	----------------------------



Procedure NA for arrivals at DARKS via V97 southbound.

Procedure NA for arrivals at FLM VOR/DME via V517 southeast bound.

3000	LOGOZ	NEATS	VGSI and RNAV glidepath not coincident (VGSI Angle 3.00°/TCH 77).	Procedure Turn NA
tr 004°		tr 005°		PUPPT
	JITEV	CIMRU	UMPTA	6000
	2400	4000	5000	GP 3.00° TCH 52
	RW36C	2400	4000	
	4.7 NM	5 NM	3.1 NM	3.1 NM

CATEGORY	A	B	C	D
RNP 0.24 DA		1295/50	444 (400-1)	
RNP 0.30 DA		1318/60	467 (500-1¼)	

AUTHORIZATION REQUIRED

SE-1, 22 JUN 2017 to 20 JUL 2017

SE-1, 22 JUN 2017 to 20 JUL 2017