

COVINGTON, KENTUCKY

AL-655 (FAA)

17229

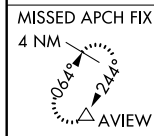
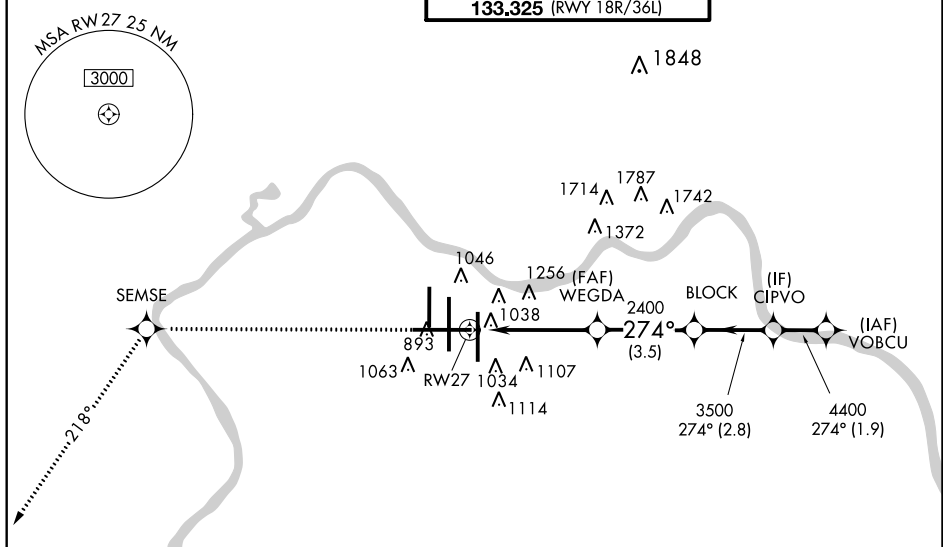
|  |                        |  |
|--|------------------------|--|
| WAAS<br>CH <b>86809</b><br><b>W27A</b> | APP CRS<br><b>274°</b> | Rwy Idg <b>12000</b><br>TDZE <b>875</b><br>Apt Elev <b>896</b> |
|--|------------------------|--|

# RNAV (GPS) Y RWY 27

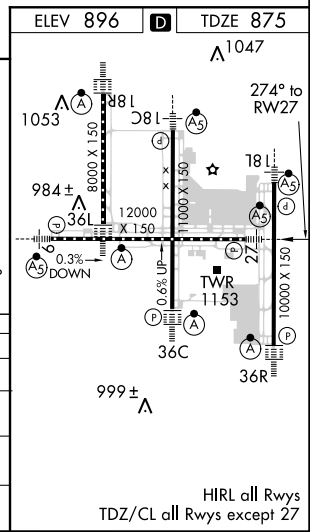
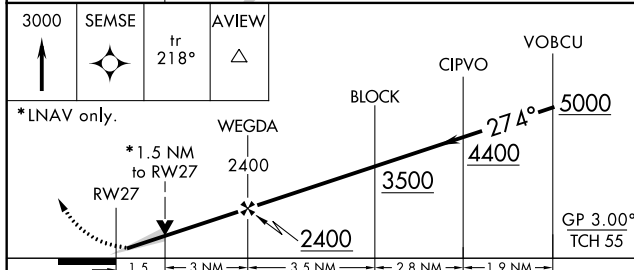
## CINCINNATI/NORTHERN KENTUCKY INTL (CVG)

|          |  |      |  |
|----------|--|------|--|
| <b>▽</b> | For uncompensated Baro-VNAV systems, LNAV/VNAV NA below -16° C (4° F) or above 47° C (116° F). DME/DME RNP-0.3 NA.<br>**RVR 1800 authorized with use of FD or AP or HUD to DA. | MALS | MISSED APPROACH: Climb to 3000 direct SEMSE then via 218° track to AVIEW and hold. |
|          |  |      |  |

|   |  |   |                         |                            |
|---|--|---|-------------------------|----------------------------|
| D-ATIS<br>ARR <b>134.375</b> DEP <b>135.3</b> | CINCINNATI APP CON<br><b>119.7 254.25</b> (090°-269°)<br><b>123.875 363.15</b> (270°-089°) | CINCINNATI TOWER<br><b>118.975 360.85</b> (RWY 18L/36R)<br><b>118.3</b> (RWYS 18C/36C, 09/27)<br><b>133.325</b> (RWY 18R/36L) | GND CON<br><b>121.7</b> | CLNC DEL<br><b>127.175</b> |
|---|--|---|-------------------------|----------------------------|



**RADAR REQUIRED**



| CATEGORY     | A       | B           | C            | D            |
|--------------|---------|-------------|--------------|--------------|
| LPV DA       |         | **1075/24   | 200 (200-½)  |              |
| LNAV/VNAV DA |         | 1349/60     | 474 (500-1¼) |              |
| LNAV MDA     | 1420/24 | 545 (600-½) | 1420/60      | 545 (600-1¼) |
| CIRCLING     | 1460-1  | 564 (600-1) | 1460-1½      | 1560-2       |

COVINGTON, KENTUCKY  
Orig-B 17AUG17

CINCINNATI/NORTHERN KENTUCKY INTL (CVG)  
39°03'N-84°40'W  
**RNAV (GPS) Y RWY 27**

SE-1, 17 AUG 2017 to 14 SEP 2017

SE-1, 17 AUG 2017 to 14 SEP 2017