

WAAS CH 58099 W18D	APP CRS 184°	Rwy Idg TDZE Apt Elev	8000 868 896
--	------------------------	-----------------------------	---

RNAV (GPS) Y RWY 18R

CINCINNATI/NORTHERN KENTUCKY INTL (CVG)

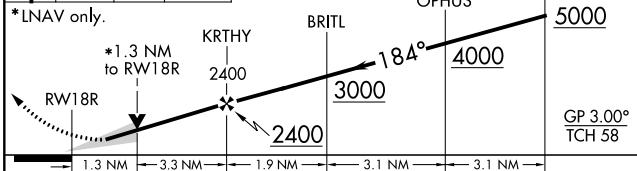
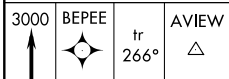
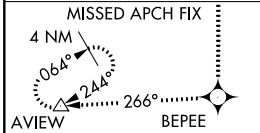
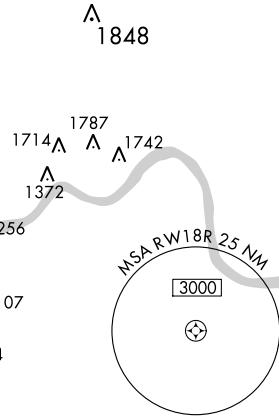
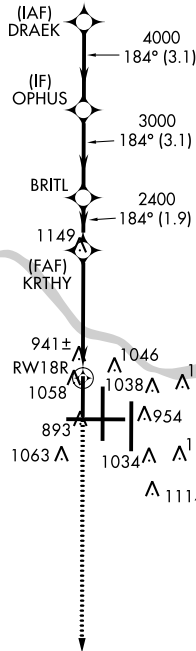
⚠ For uncompensated Baro-VNAV systems, LNAV/VNAV NA below -16°C (4°F) or above 47°C (116°F). DME/DME RNP-0.3 NA. Simultaneous approach authorized with Rwy 18L/C. LNAV procedure NA during simultaneous operations. Use of FD or AP providing RNAV track guidance required during simultaneous operations.



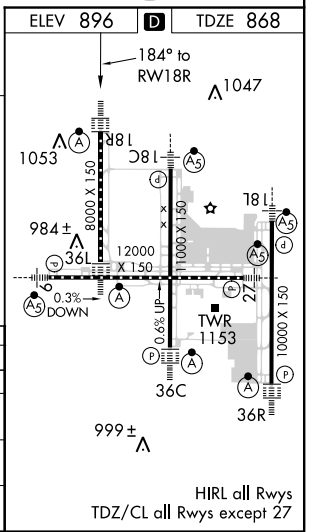
MISSED APPROACH: Climb to 3000 direct BEPEE and via 266° track to AVIEW and hold.

D-ATIS ARR 134.375 DEP 135.3	CINCINNATI APP CON 119.7 254.25 (090°-269°)	CINCINNATI TOWER 118.975 360.85 (RWY 18L/36R) 118.3 (RWYS 18C/36C, 09/27) 133.325 (RWY 18R/36L)	GND CON 121.7	CLNC DEL 127.175
---	---	---	-------------------------	----------------------------

RADAR REQUIRED



CATEGORY	A	B	C	D
LPV DA	1068/24		200 (200-½)	
LNAV/VNAV DA	1321/50		453 (500-1)	
LNAV MDA	1320/24	452 (500-½)	1320/40 452 (500-¾)	1320/50 452 (500-1)
CIRCLING	1460-1	564 (600-1)	1460-1½ 564 (600-1½)	1560-2 664 (700-2)



SE-1, 27 APR 2017 to 25 MAY 2017

SE-1, 27 APR 2017 to 25 MAY 2017

HIRL all Rwys
TDZ/CL all Rwys except 27