

WAAS CH 86803 W18B	APP CRS 184°	Rwy Idg 11000 TDZE 875 Apt Elev 896
--	------------------------	--

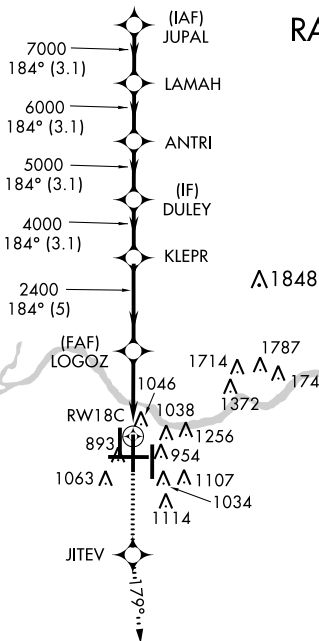
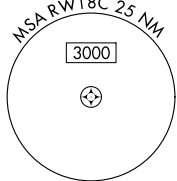
RNAV (GPS) Y RWY 18C

CINCINNATI/NORTHERN KENTUCKY INTL (CVG)

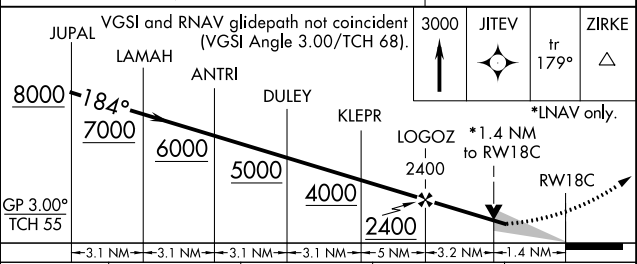
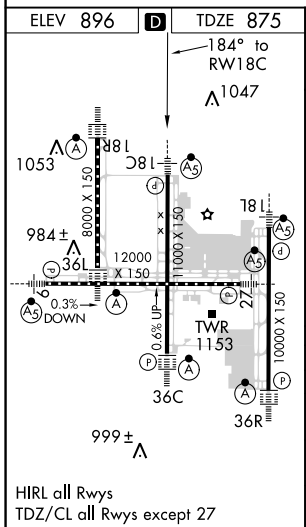
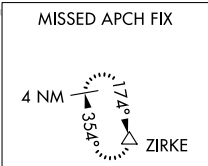
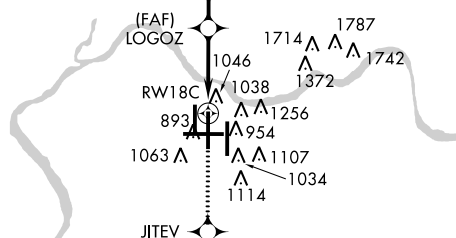
▼ For uncompensated Baro-VNAV systems, LNAV/VNAV NA below -16°C (4°F) or above 47°C (116°F). DME/DME RNP-0.3 NA. Simultaneous approach authorized with Rwy 18 L/R. LNAV procedure NA during simultaneous operations. Use of FD or AP providing RNAV track guidance required during simultaneous operations.

MALSR
MISSED APPROACH: Climb to 3000 direct JITEV and on 179° track to ZIRKE and hold.

D-ATIS ARR 134.375 DEP 135.3	CINCINNATI APP CON 119.7 254.25 (090°-269°) 123.875 363.15 (270°-089°)	CINCINNATI TOWER 118.975 360.85 (RWY 18L/36R) 118.3 (RWYS 18C/36C, 09/27) 133.325 (RWY 18R/36L)	GND CON 121.7	CLNC DEL 127.175
---	--	---	-------------------------	----------------------------



RADAR REQUIRED



CATEGORY	A	B	C	D
LPV DA		1075/18	200 (200-1/2)	
LNAV/VNAV DA		1398/60	523 (600-1 1/4)	
LNAV MDA	1360/24	485 (500-1/2)	1360/40 485 (500-3/4)	1360/50 485 (500-1)
CIRCLING	1460-1	564 (600-1)	1460-1 1/2 564 (600-1 1/2)	1560-2 664 (700-2)

SE-1, 12 OCT 2017 to 09 NOV 2017

SE-1, 12 OCT 2017 to 09 NOV 2017