

(CHCLL3.CHCLL) 14093

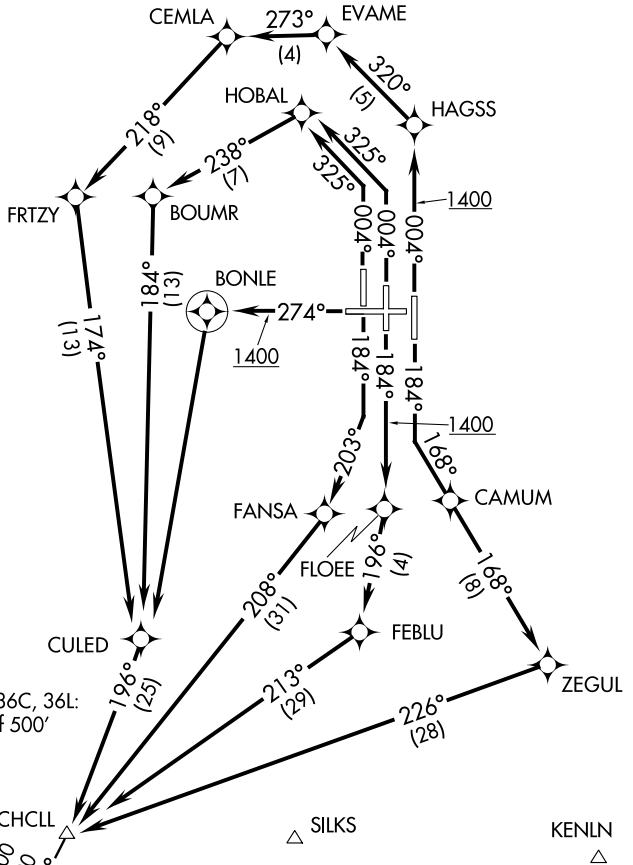
CINCINNATI/NORTHERN KENTUCKY INTL (CVG)

CHCLL THREE DEPARTURE (RNAV)

SL-655 (FAA)

COVINGTON, KENTUCKY

ATIS DEP 135.3
 CINCINNATI TOWER
 118.3 (RWYS 18C/36C, 9/27)
 118.975 360.85 (RWY 18L/36R)
 133.325 (RWY 18R/36L)
 GND CON
 121.7 (WEST) 121.3 (EAST)
 CLNC DEL
 127.175
 CINCINNATI DEP CON
 126.65 (001°-180°)
 128.7 (181°-360°)



TAKEOFF MINIMUMS:

Rwy 9: NA-ATC.
 Rwys 18L, 18C, 18R, 27, 36R, 36C, 36L:
 Standard with minimum climb of 500'
 per NM to 1400.

- NOTE: If unable to accept climb rates, advise ATC on initial contact.
- NOTE: DME/DME/IRU or GPS required.
- NOTE: Radar required.
- NOTE: RNAV 1.
- NOTE: Transponder code will be issued via PDC or Cincinnati CLNC DEL.
- NOTE: Accelerate to 250K, if unable, advise ATC.

(NARRATIVE ON FOLLOWING PAGE)

NOTE: Chart not to scale.

CHCLL THREE DEPARTURE (RNAV)

COVINGTON, KENTUCKY

(CHCLL3.CHCLL) 14093

CINCINNATI/NORTHERN KENTUCKY INTL (CVG)

SE-1, 08 JAN 2015 to 05 FEB 2015

SE-1, 08 JAN 2015 to 05 FEB 2015

DEPARTURE ROUTE DESCRIPTION



TAKEOFF RUNWAY 18L: Climb heading 184° to intercept course 168° to CAMUM, then on depicted route to CHCLL, thence. . . .

TAKEOFF RUNWAY 18C: Climb heading 184° to 1400, then direct FLOEE, then on depicted route to CHCLL, thence. . . .

TAKEOFF RUNWAY 18R: Climb heading 184° to intercept course 203° to FANSA, then on depicted route to CHCLL, thence. . . .

TAKEOFF RUNWAY 27: Climb heading 274° to 1400, then direct BONLE, then left turn direct CULED, then on depicted route to CHCLL, thence. . . .

TAKEOFF RUNWAY 36R: Climb heading 004° to 1400, then direct HAGSS, then on depicted route to CHCLL, thence. . . .

TAKEOFF RUNWAY 36C: Climb heading 004° to intercept course 325° to HOBAL, then on depicted route to CHCLL, thence. . . .

TAKEOFF RUNWAY 36L: Climb heading 004° to intercept course 325° to HOBAL, then on depicted route to CHCLL, thence. . . .

. . . . turbojet aircraft maintain 6000, all other aircraft maintain 4000. Expect clearance to filed altitude within 10 minutes after departure.

BOWLING GREEN TRANSITION (CHCLL3.BWG):

LOUISVILLE TRANSITION (CHCLL3.IIU):

TAKEOFF OBSTACLE NOTES:

Rwy 18C: Trees beginning 1882' from DER, 834' left of centerline, up to 75' AGL/974' MSL.
Trees 3473' from DER, 904' right of centerline, up to 70' AGL/929' MSL.

Rwy 18R: Trees beginning 3221' from DER, 895' left of centerline, up to 85' AGL/964' MSL.

Rwy 36C: Trees beginning 956' from DER, 613' right of centerline, up to 94' AGL/963' MSL.

Rwy 36R: Light pole 1476' from DER, 813' left of centerline, 47' AGL/826' MSL.
Trees 1602' from DER, 754' right of centerline, up to 59' AGL/938' MSL.

SE-1, 08 JAN 2015 to 05 FEB 2015

SE-1, 08 JAN 2015 to 05 FEB 2015