

17117
AIRPORT DIAGRAM

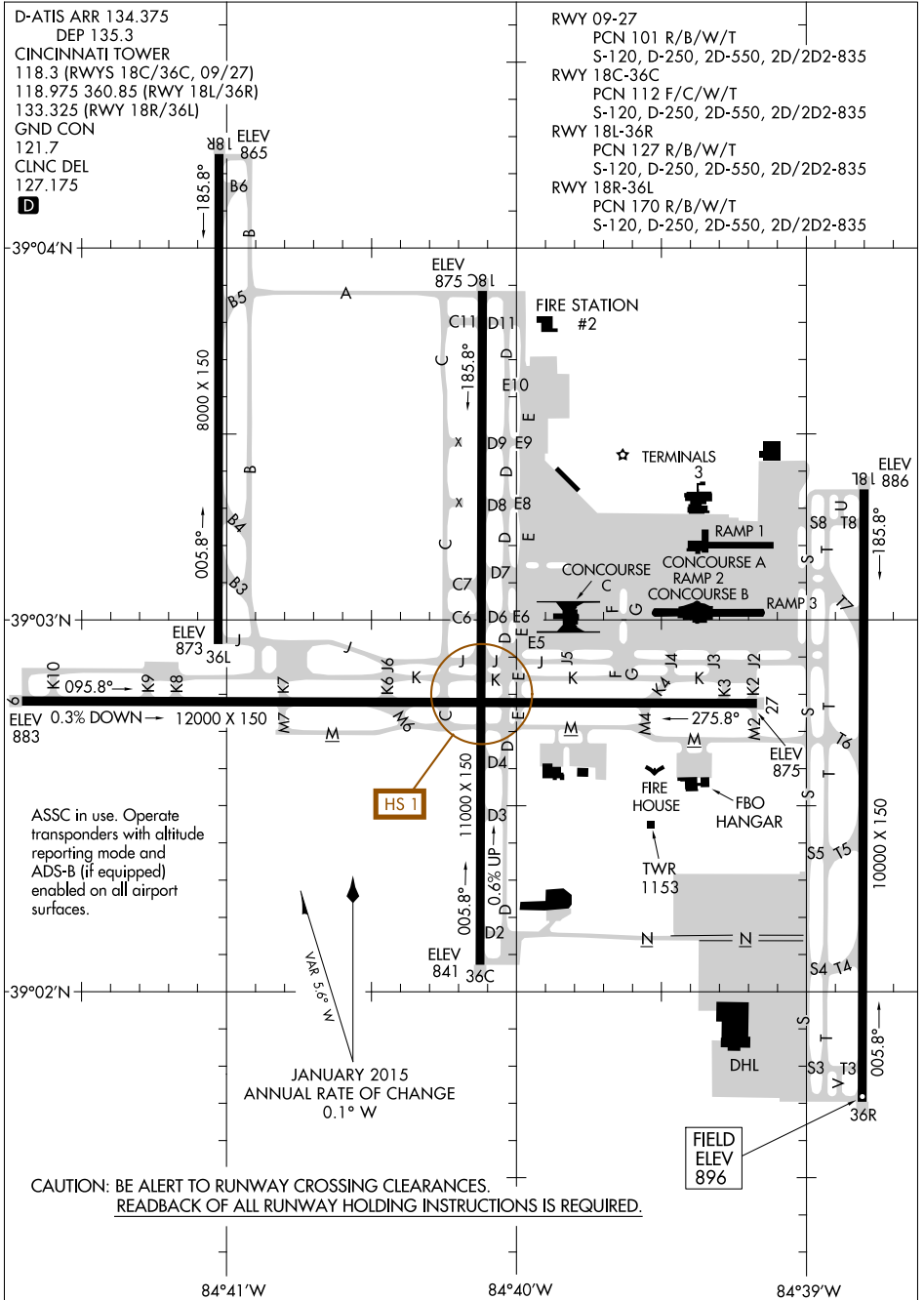
CINCINNATI/NORTHERN KENTUCKY INTL (CVG)
 AL-655 (FAA)
 COVINGTON, KENTUCKY

D-ATIS ARR 134.375
 DEP 135.3
 CINCINNATI TOWER
 118.3 (RWYS 18C/36C, 09/27)
 118.975 360.85 (RWY 18L/36R)
 133.325 (RWY 18R/36L)
 GND CON
 121.7
 CLNC DEL
 127.175
D

RWY 09-27
 PCN 101 R/B/W/T
 S-120, D-250, 2D-550, 2D/2D2-835
 RWY 18C-36C
 PCN 112 F/C/W/T
 S-120, D-250, 2D-550, 2D/2D2-835
 RWY 18L-36R
 PCN 127 R/B/W/T
 S-120, D-250, 2D-550, 2D/2D2-835
 RWY 18R-36L
 PCN 170 R/B/W/T
 S-120, D-250, 2D-550, 2D/2D2-835

SE-1, 22 JUN 2017 to 20 JUL 2017

SE-1, 22 JUN 2017 to 20 JUL 2017



ASSC in use. Operate transponders with altitude reporting mode and ADS-B (if equipped) enabled on all airport surfaces.

VAR 3.5° W
 JANUARY 2015
 ANNUAL RATE OF CHANGE
 0.1° W

CAUTION: BE ALERT TO RUNWAY CROSSING CLEARANCES.
READBACK OF ALL RUNWAY HOLDING INSTRUCTIONS IS REQUIRED.

17117
AIRPORT DIAGRAM

COVINGTON, KENTUCKY
 CINCINNATI/NORTHERN KENTUCKY INTL (CVG)