

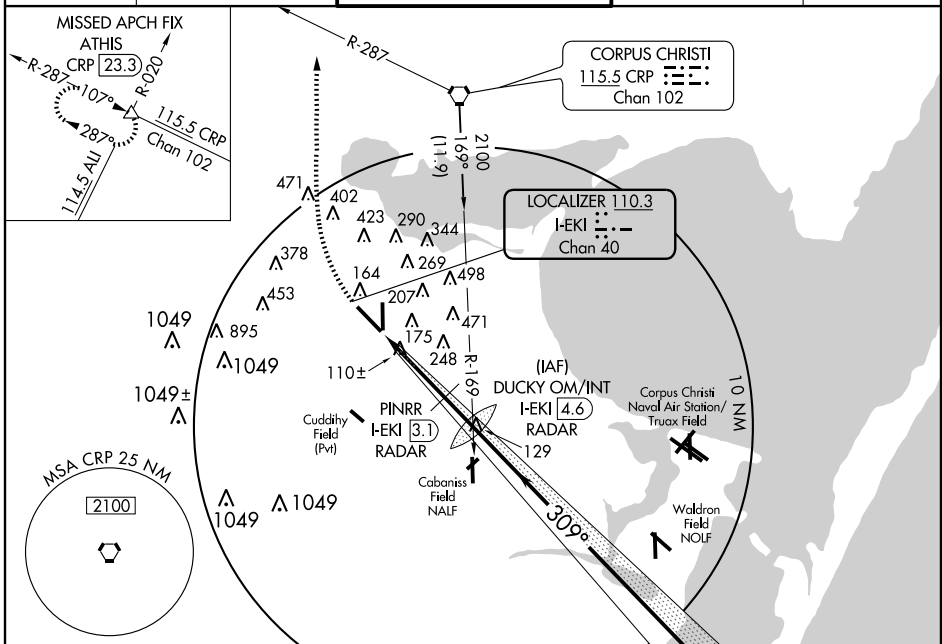
LOC RWY 31

CORPUS CHRISTI INTL (CRP)

LOC/DME I-EKI 110.3 Chan 40	APP CRS 309°	Rwy Idg TDZE 44 Apt Elev 44	7508
--	------------------------	---	-------------

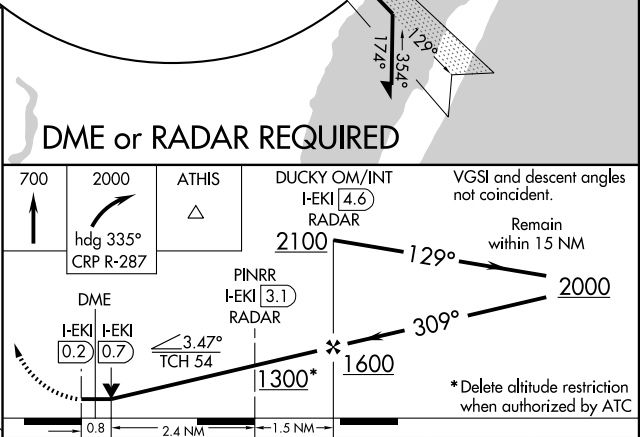
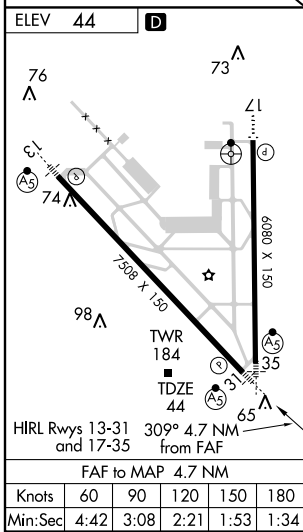
<p>▼ For inoperative MALS, increase S-31 Cats D and E visibility to 1 mile.</p> <p>▲</p>	MALS	MISSED APPROACH: Climb to 700 then climbing right turn to 2000 via heading 335° and via CRP R-287 to ATHIS Int/CRP 23.3 DME and hold.
--	------	---

ATIS 126.8	CORPUS APP CON 120.9 348.725	CORPUS TOWER 119.4 257.8	GND CON 121.9 269.15	CLNC DEL 118.55
----------------------	--	------------------------------------	--------------------------------	---------------------------



SC-3, 31 MAY 2012 to 28 JUN 2012

SC-3, 31 MAY 2012 to 28 JUN 2012



ELEV 44		D					
FAF to MAP 4.7 NM		CATEGORY	A	B	C	D	E
Knots	60 90 120 150 180	S-31	360-1/2	316 (400-1/2)	360-3/4	316 (400-3/4)	
Min:Sec	4:42 3:08 2:21 1:53 1:34	CIRCLING	520-1	476 (500-1)	640-1 1/2 596 (600-1 1/2)	740-2 1/4 696 (700-2 1/4)	860-3 816 (900-3)