

LOC/DME I-OYC 109.5	APP CRS 352°	Rwy Idg TDZE Apt Elev	6080 40 44
Chan 32			

ILS or LOC RWY 35

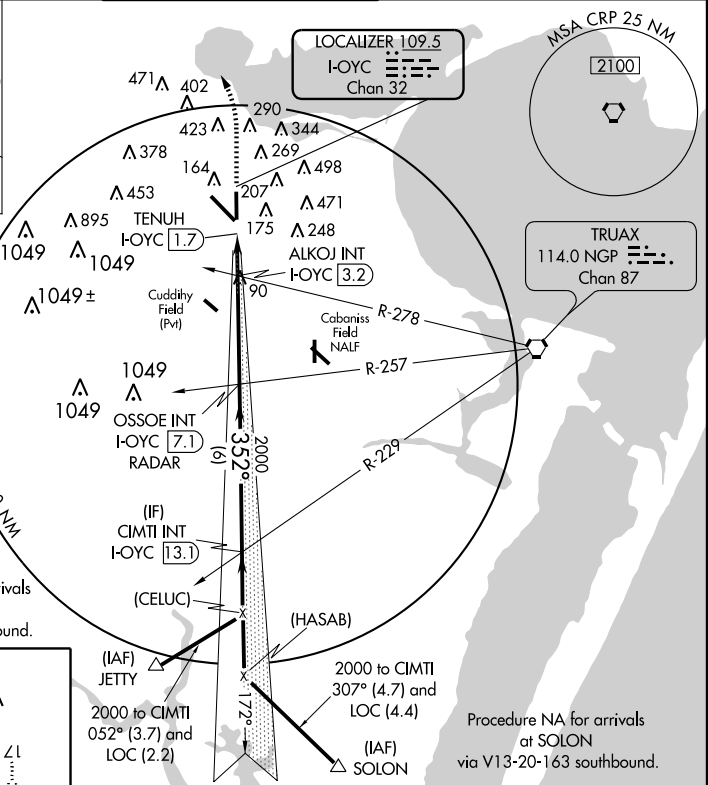
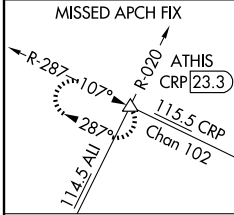
CORPUS CHRISTI INTL (CRP)

▲ For inoperative MALSR, increase S-ILS 35 Cat E visibility to RVR 4000 and S-LOC 35 Cat D visibility to RVR 5000, Cat E to RVR 6000.



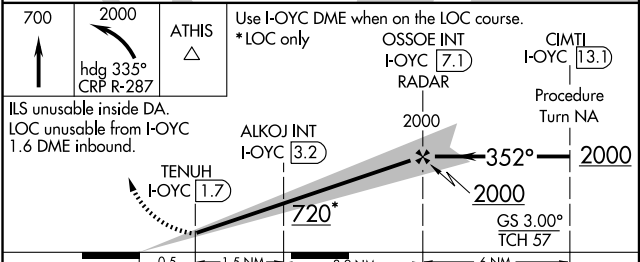
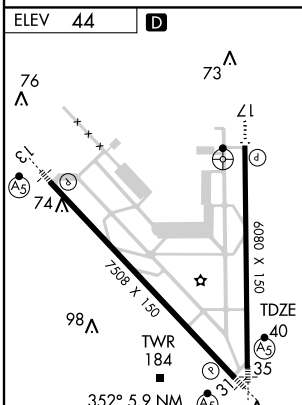
MISSED APPROACH: Climb to 700 then climbing left turn to 2000 via heading 335° and CRP R-287 to ATHIS INT/CRP 23.3 DME and hold.

ATIS 126.8	CORPUS APP CON 120.9 348.725	CORPUS TOWER 119.4 257.8	GND CON 121.9 269.15	CLNC DEL 118.55
----------------------	--	------------------------------------	--------------------------------	---------------------------



Procedure NA for arrivals at JETTY via V70-407 southbound.

Procedure NA for arrivals at SOLON via V13-20-163 southbound.



CATEGORY	A	B	C	D	E
S-ILS 35	240/24 200 (200-1/2)				
S-LOC 35	380/24 340 (400-1/2) 380/40 340 (400-3/4)				
CIRCLING	500-1 456 (500-1)	520-1 476 (500-1)	580-1 1/2 536 (600-1 1/2)	740-2 1/4 696 (700-2 1/4)	860-3 816 (900-3)

SC-3, 31 MAY 2012 to 28 JUN 2012

SC-3, 31 MAY 2012 to 28 JUN 2012