

LOC/DME I-CRP <b>110.3</b> Chan 40	APP CRS <b>129°</b>	Rwy Idg <b>7508</b> TDZE <b>43</b> Apt Elev <b>44</b>
--	------------------------	--

# ILS or LOC RWY 13

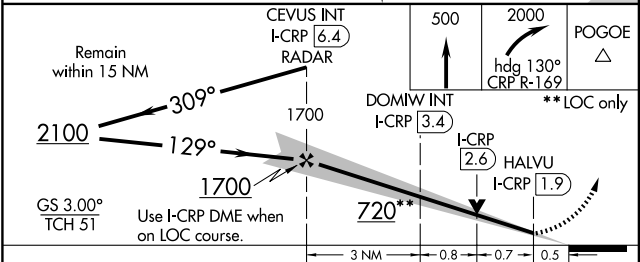
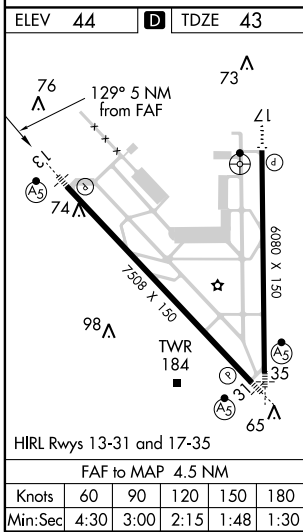
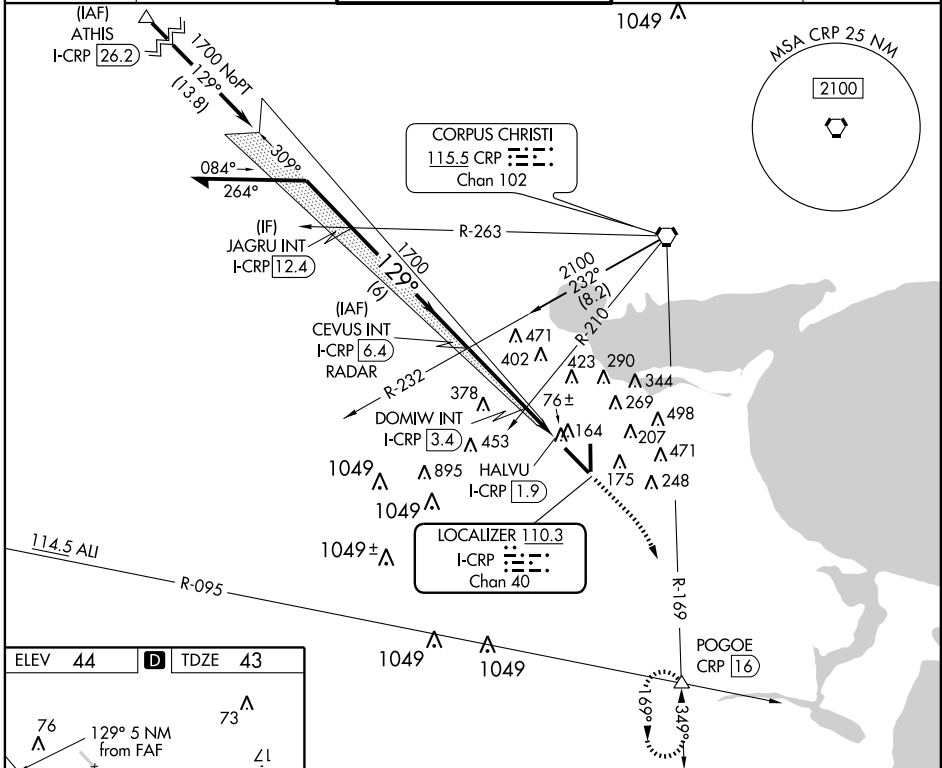
CORPUS CHRISTI INTL (CRP)

**V** \*RVR 1800 authorized with use of FD or AP or HUD to DA.  
**A** For inoperative MALSR increase S-ILS Cat E visibility ¼ mile and S-LOC Cat E visibility ½ mile.

MALSR

MISSED APPROACH: Climb to 500 then climbing right turn to 2000 via heading 130° and CRP R-169 to POGOE INT/CRP 16 DME and hold.

ATIS <b>126.8</b>	CORPUS APP CON <b>120.9 348.725</b>	CORPUS TOWER <b>119.4 257.8</b>	GND CON <b>121.9 269.15</b>	CLNC DEL <b>118.55</b>
----------------------	--	------------------------------------	--------------------------------	---------------------------



CATEGORY	A	B	C	D	E
S-ILS 13	* 243/24 200 (200-½)				
S-LOC 13	480/24	437 (500-½)	480/40 437 (500-¾)	480/50	437 (500-1)
CIRCLING	500-1 456 (500-1)	520-1 476 (500-1)	580-1½ 536 (600-1½)	740-2¼ 696 (700-2¼)	860-3 816 (900-3)

SC-3, 31 MAY 2012 to 28 JUN 2012

SC-3, 31 MAY 2012 to 28 JUN 2012