

CODY, WYOMING

AL-5243 (FAA)

17061

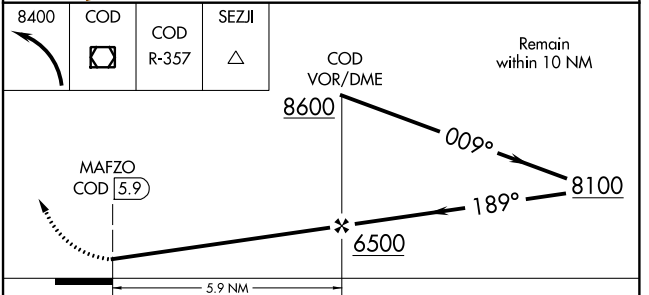
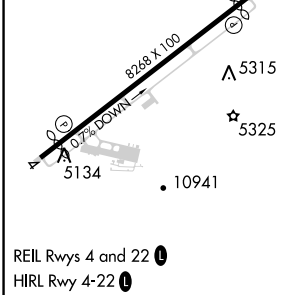
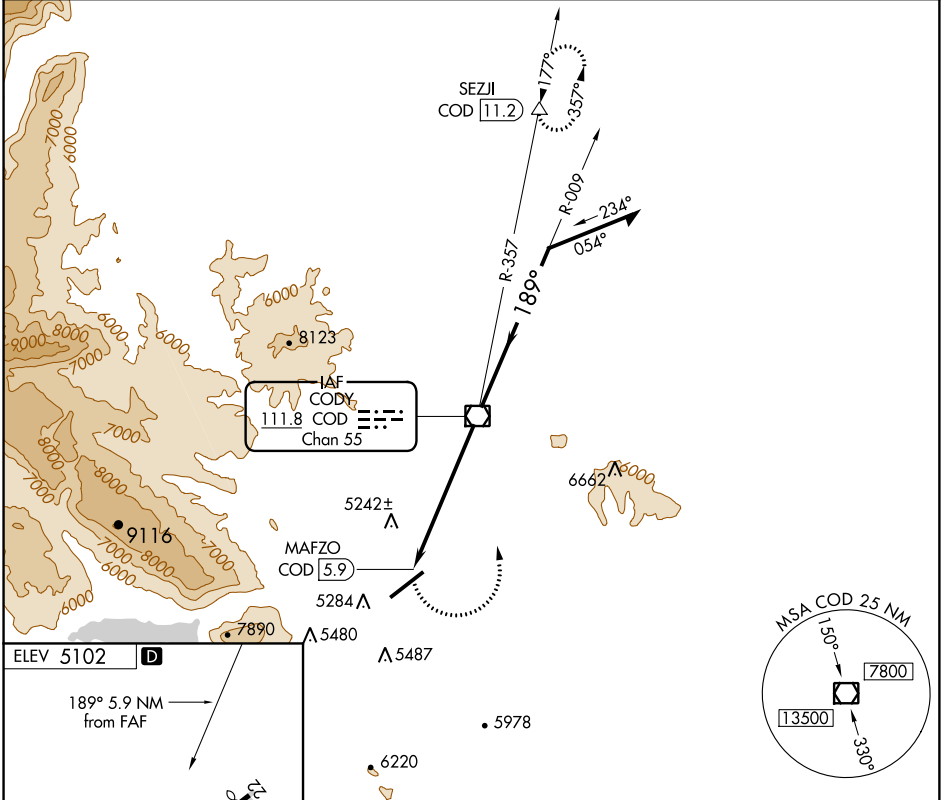
VOR/DME COD <b>111.8</b> Chan <b>55</b>	APP CRS <b>189°</b>	Rwy Idg TDZE Apt Elev <b>N/A</b> <b>N/A</b> <b>5102</b>
---	------------------------	--

**VOR-A**  
YELLOWSTONE RGNL (COD)

When local altimeter setting not received, procedure NA. DME required.

MISSED APPROACH: Climbing left turn to 8400 direct COD VOR/DME and on COD VOR/DME R-357 to SEZJI/COD 11.2 DME and hold.

AWOS-3PT <b>135.075</b>	SALT LAKE CENTER <b>127.75 351.9</b>	UNICOM <b>122.8 (CTAF)</b>
----------------------------	---	-------------------------------



FAF to MAP 5.9 NM					
Knots	60	90	120	150	180
Min:Sec	5:54	3:56	2:57	2:22	1:58

CATEGORY	A	B	C	D
CIRCLING	5800-1	698 (700-1)	5800-2 698 (700-2)	5920-2¾ 818 (900-2¾)

CODY, WYOMING  
Amdt 8 02MAY13

44°31'N-109°01'W

**VOR-A**  
YELLOWSTONE RGNL (COD)

NW-1, 17 AUG 2017 to 14 SEP 2017

NW-1, 17 AUG 2017 to 14 SEP 2017