

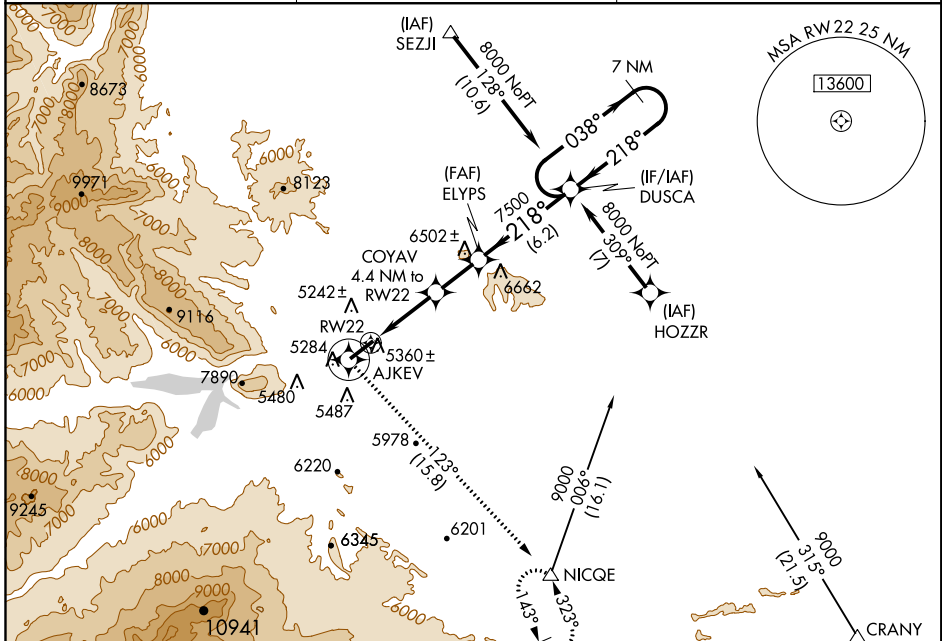
WAAS CH <b>93600</b> <b>W22A</b>	APP CRS <b>218°</b>	Rwy ldg TDZE Apt Elev <b>7178</b> <b>5076</b> <b>5102</b>
--	------------------------	--

# RNAV (GPS) RWY 22

YELLOWSTONE RGNL (COD)

-31°C/-24°F	DME/DME RNP- 0.3 NA.	MISSED APPROACH: Climb to 9600 direct AJKEV and left turn via 123° track to NICQE and hold.
-------------	----------------------	---

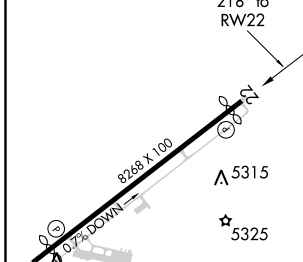
AWOS-3PT <b>135.075</b>	SALT LAKE CENTER <b>127.75 351.9</b>	UNICOM <b>122.8 (CTAF)</b>
----------------------------	---	-------------------------------



NW-1, 17 AUG 2017 to 14 SEP 2017

NW-1, 17 AUG 2017 to 14 SEP 2017

ELEV 5102	<b>D</b>	TDZE 5076
-----------	----------	-----------



9600	AJKEV	NICQE	DUSCA	7 NM Holding Pattern
↑		123° tr		
* LNAV only		COYAV 4.4 NM to RW22	ELYPS	
	* 1.6 NM to RW22	218°	038°	8000
		6540	7500	GP 3.00°
				TCH 50
	1.6	2.8 NM	2.9 NM	6.2 NM

CATEGORY	A	B	C	D
LPV DA	5457-1¼ 381 (400-1¼)			
LNAV/ VNAV DA	NA			
LNAV MDA	5620-1	544 (600-1)	5620-1½ 544 (600-1½)	5620-1¾ 544 (600-1¾)
CIRCLING	5840-1¼	738 (800-1¼)	5900-2¼ 798 (800-2¼)	5960-2¾ 858 (900-2¾)

CODY, WYOMING  
Amdt 1 13APR06

44°31'N-109°01'W

# YELLOWSTONE RGNL (COD)

## RNAV (GPS) RWY 22