

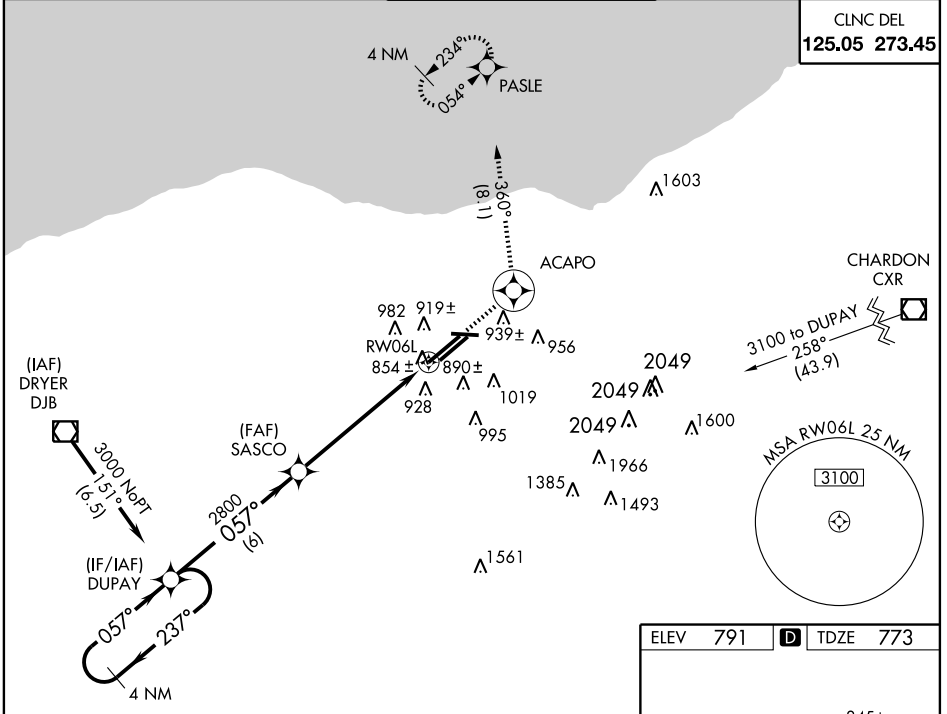
WAAS CH <b>56204</b> <b>W06A</b>	APP CRS <b>057°</b>	Rwy Idg TDZE Apt Elev	<b>9000</b> <b>773</b> <b>791</b>
--	------------------------	-----------------------------	---

# RNAV (GPS) RWY 6L

CLEVELAND-HOPKINS INTL (CLE)

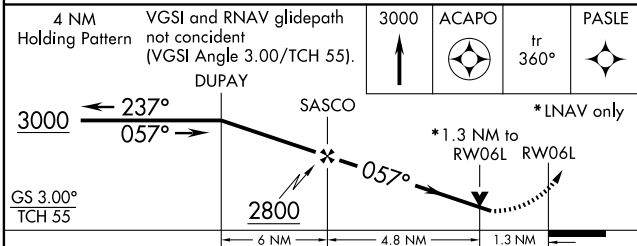
<p><b>▼</b> DME/DME RNP-0.3 NA. Baro-VNAV NA below -16°C (4°F). Simultaneous approach authorized with Rwy 6R. LNAV procedure NA during simultaneous operations. Use FD or AP providing RNAV track guidance required during simultaneous operations.</p>	<p>ALSIF-2</p>	<p>MISSED APPROACH: Climb to 3000 direct ACAPO, then via 360° track to PASLE and hold.</p>
---	----------------	--

<p>ATIS ARR <b>127.85</b> DEP <b>132.375</b></p>	<p>CLEVELAND APP CON 6R/24L, 28 <b>124.0 354.025</b> 6L/24R, 10 <b>126.55 354.025</b></p>	<p>CLEVELAND TOWER 6R/24L, 10/28 <b>120.9 273.45</b> 6L/24R <b>124.5 273.45</b></p>	<p>GND CON 6R/24L, 10/28 <b>121.7 273.45</b> 6L/24R <b>133.6 273.45</b></p>
--	---	---	---



EC-2, 31 MAY 2012 to 28 JUN 2012

EC-2, 31 MAY 2012 to 28 JUN 2012



CATEGORY	A	B	C	D
LPV DA	1110/40		337 (400-¾)	
LNAV/VNAV DA	1220/50		447 (500-1)	
LNAV MDA	1240/24	467 (500-½)	1240/40 467 (500-¾)	1240/50 467 (500-1)
CIRCLING	1300-1½ 509 (600-1½)		1320-1½ 529 (600-1½)	1380-2 589 (600-2)

ELEV 791	<b>D</b> TDZE 773
----------	-------------------

REIL Rwy 10  
TDZ/CL Rwy 6R, 6L, 24R, and 24L  
HIRL Rwy 10-28, 6R-24L, and 6L-24R