

CLEVELAND, OHIO

AL-84 (FAA)

17117

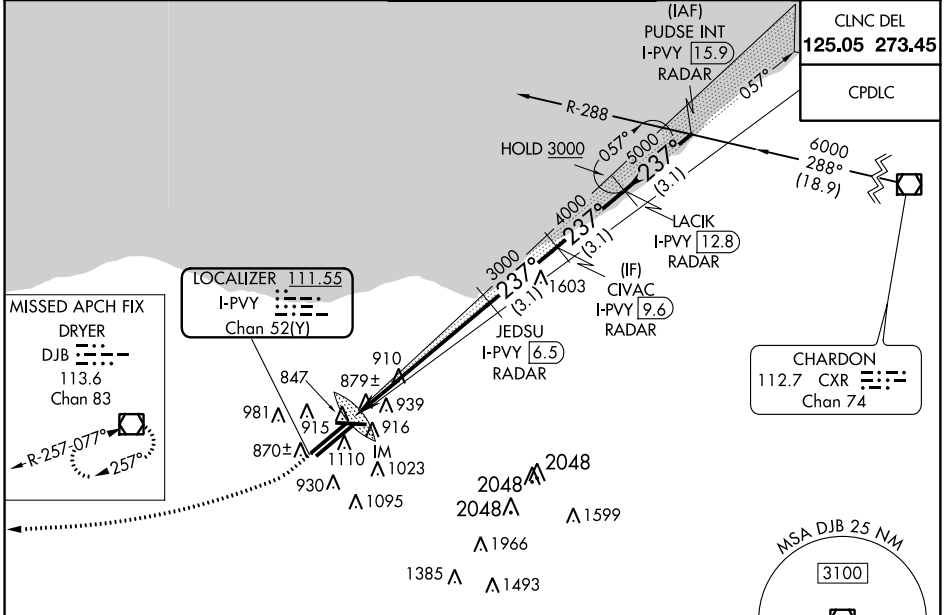
LOC/DME I-PVY 111.55	APP CRS 237°	Rwy Idg TDZE Apt Elev	9000 780 799
Chan 52(Y)			

ILS RWY 24R (SA CAT I)

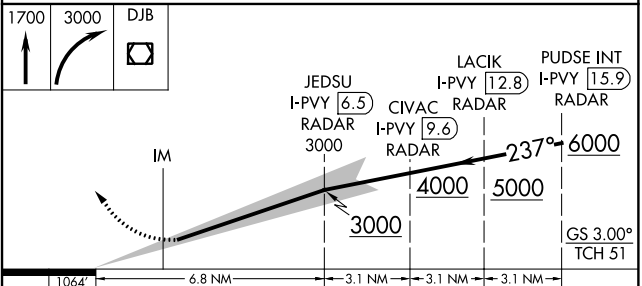
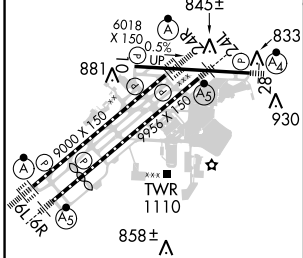
CLEVELAND-HOPKINS INTL (CLE)

<p>Requires specific OPSPEC, MSPEC, or LOA approval and use of HUD to DA.</p>	ALSF-2 	MISSED APPROACH: Climb to 1700 then climbing right turn to 3000 direct DJB VOR/DME and hold.

D-ATIS ARR 127.85 DEP 132.375	CLEVELAND APP CON 6R/24L, 28 6L/24R, 10	124.0 354.025 354.025	CLEVELAND TOWER 6R/24L, 10/28 6L/24R	120.9 273.45 124.5 273.45	GND CON 6R/24L, 10/28 6L/24R	121.7 273.45 133.6 273.45
---------------------------------------------------	-----------------------------------------------	--------------------------------------------------	--------------------------------------------	------------------------------------------------------	------------------------------------	------------------------------------------------------



ELEV 799	D	TDZE 780
----------	----------	----------



CATEGORY	A	B	C	D
S-ILS 24R	RA 150/14 150 DA 930			

SA CATEGORY I ILS - SPECIAL AIRCREW & AIRCRAFT CERTIFICATION REQUIRED

CLEVELAND, OHIO
Amdt 5C 05MAR15

41°25'N-81°51'W

CLEVELAND-HOPKINS INTL (CLE)
ILS RWY 24R (SA CAT I)

EC-2, 12 OCT 2017 to 09 NOV 2017

EC-2, 12 OCT 2017 to 09 NOV 2017