

CLEVELAND, OHIO

AL-84 (FAA)

12152

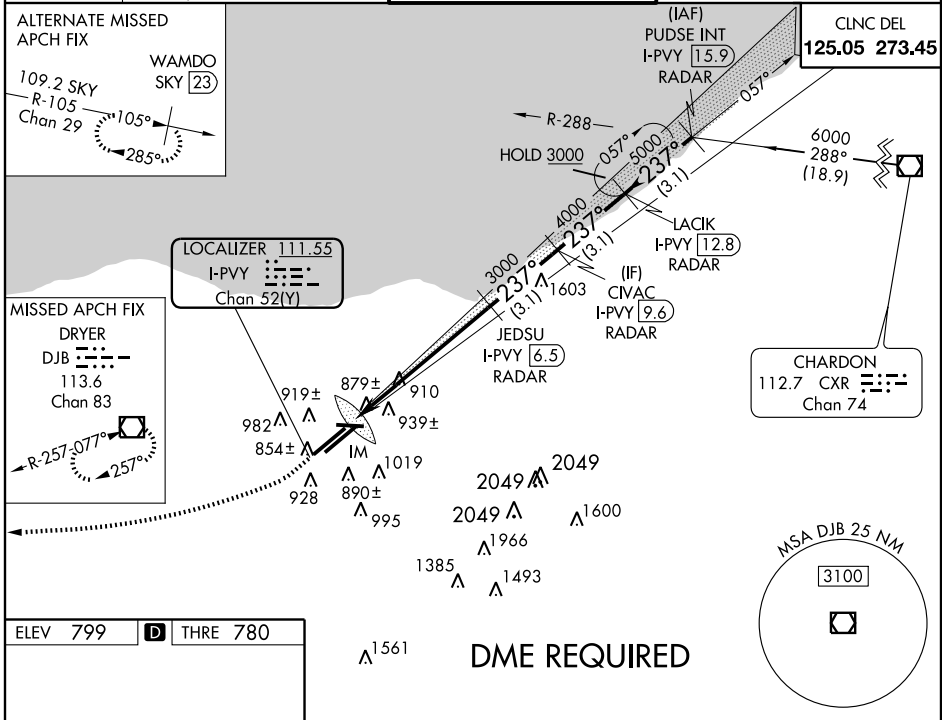
LOC/DME I-PVY 111.55 Chan 52(Y)	APP CRS 237°	Rwy Idg THRE 780 Apt Elev 799
--	------------------------	---

ILS RWY 24R (CAT II)

CLEVELAND-HOPKINS INTL (CLE)

<p>RVR 1000 authorized with specific OPSPEC, MPSPEC, or LOA approval and use of autoland or HUD to touchdown. Simultaneous approach authorized with Rwy 24L.</p>	<p>ALS-F-2</p>	<p>MISSED APPROACH: Climb to 1700 then climbing right turn to 3000 direct DJB VOR/DME and hold.</p>
--	----------------	---

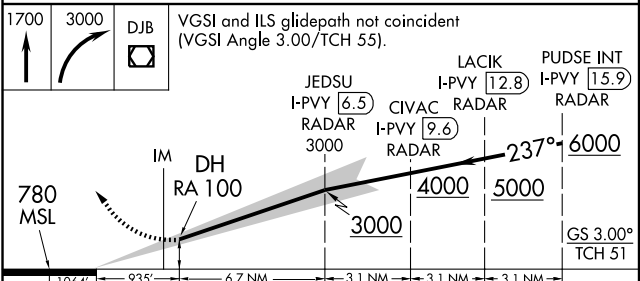
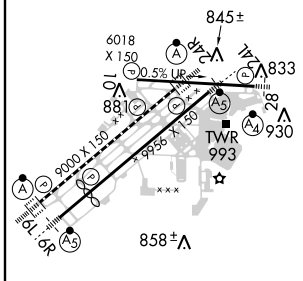
<p>ATIS</p> <p>ARR 127.85 6R/24L, 28 DEP 132.375 6L/24R, 10</p>	<p>CLEVELAND APP CON</p> <p>124.0 354.025</p>	<p>CLEVELAND TOWER</p> <p>6R/24L, 10/28 120.9 273.45 6L/24R 124.5 273.45</p>	<p>GND CON</p> <p>6R/24L, 10/28 121.7 273.45 6L/24R 133.6 273.45</p>
---	--	--	--



EC-2, 31 MAY 2012 to 28 JUN 2012

EC-2, 31 MAY 2012 to 28 JUN 2012

ELEV 799	D	THRE 780
----------	----------	----------



CATEGORY	A	B	C	D
S-ILS 24R	RA 100/12 100 DA 880			

REIL Rwy 10
TDZ/CL Rwy 6R, 6L, 24L and 24R
HIRL Rws 10-28, 6R-24L, and 6L-24R

CLEVELAND, OHIO
Amdt 5A 05APR12

41°25'N-81°51'W

CLEVELAND-HOPKINS INTL (CLE)
ILS RWY 24R (CAT II)