

CLEVELAND, OHIO

AL-84 (FAA)

12152

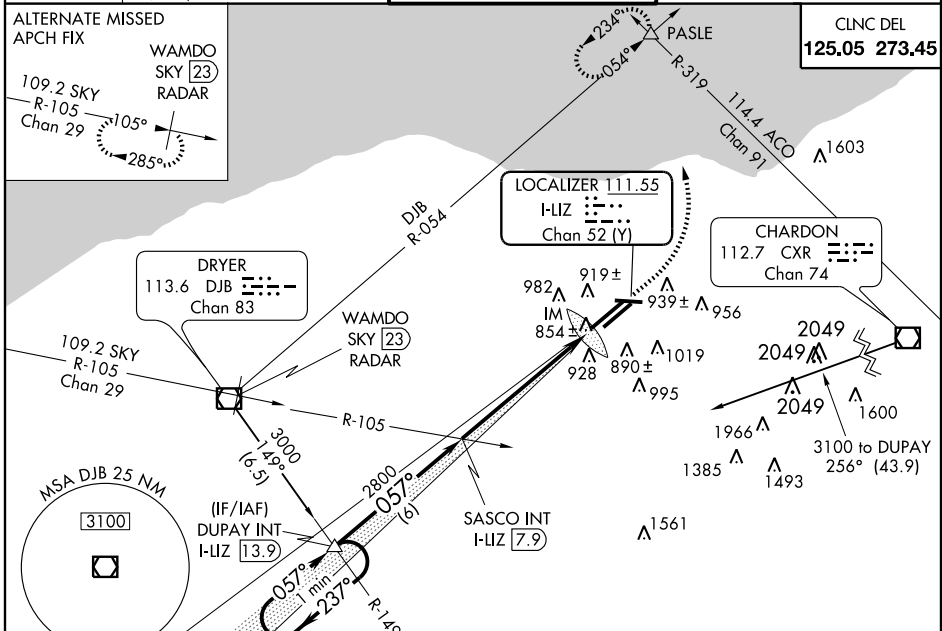
LOC/DME I-LIZ 111.55 Chan 52 (Y)	APP CRS 057°	Rwy Idg TDZE Apt Elev	9000 773 791
---	------------------------	-----------------------------	---

ILS RWY 6L (CAT II)

CLEVELAND-HOPKINS INTL (CLE)

Simultaneous approach authorized with Rwy 6R.		ALSF-2 	MISSED APPROACH: Climb to 1800, then climbing left turn to 3000 via heading 350° and DJB R-054 to PASLE INT and hold
---	--	------------	--

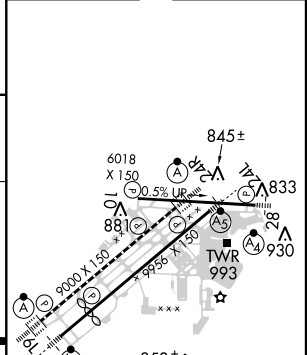
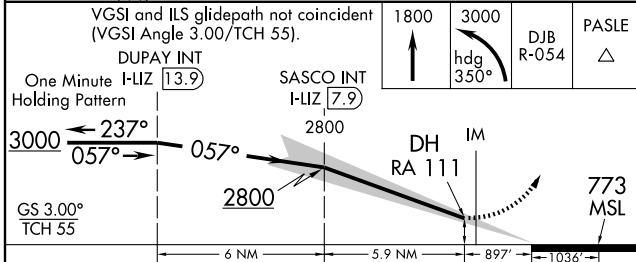
ATIS ARR 127.85 DEP 132.375	CLEVELAND APP CON 6R/24L, 28 124.0 354.025 6L/24R, 10 126.55 354.025	CLEVELAND TOWER 6R/24L, 10/28 120.9 273.45 6L/24R 124.5 273.45	GND CON 6R/24L, 10/28 121.7 273.45 6L/24R 133.6 273.45
---	--	--	--



EC-2, 31 MAY 2012 to 28 JUN 2012

EC-2, 31 MAY 2012 to 28 JUN 2012

ELEV 791	D	TDZE 773
----------	----------	----------



CATEGORY	A	B	C	D
S-ILS 6L	RA 111/12 100 DA 873			

CATEGORY II ILS - SPECIAL AIRCREW & AIRCRAFT CERTIFICATION REQUIRED

REIL Rwy 10
 TDZ/CL Rwy 6R, 6L, 24R, and 24L
 HIRL Rwy 10-28, 6R-24L, and 6L-24R

CLEVELAND, OHIO
 Amdt 2C 05APR12

41°25'N-81°51'W

CLEVELAND-HOPKINS INTL (CLE)
ILS RWY 6L (CAT II)