

LOC/DME I-PXP <b>110.7</b> Chan 44	APP CRS <b>280°</b>	Rwy Idg THRE Apt Elev	<b>6018</b> <b>799</b> <b>799</b>
--	------------------------	-----------------------------	---

# ILS or LOC RWY 28

CLEVELAND-HOPKINS INTL (CLE)

▼ When VGSI inoperative, Circling Rwy 10 NA at night.  
▲ DME or RADAR required.

MALSF

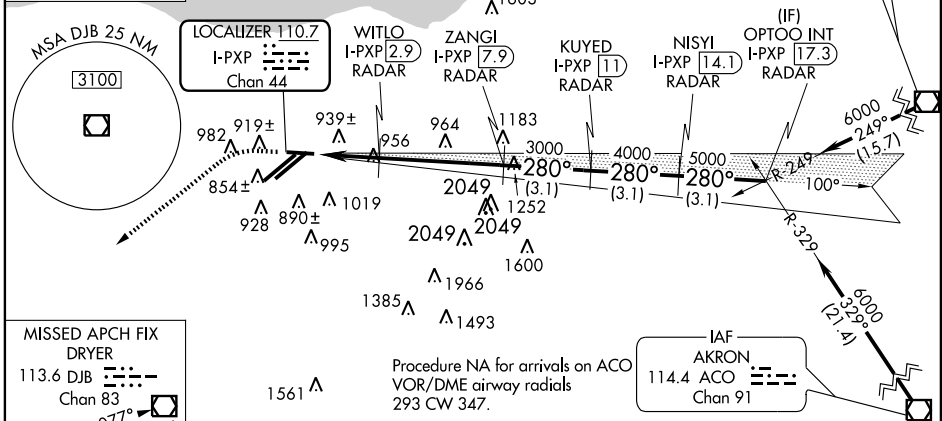
MISSED APPROACH: Climb to 1400 then climbing left turn to 3000 direct DJB VOR/DME and hold.

ATIS ARR <b>127.85</b> DEP <b>132.375</b>	CLEVELAND APP CON 6R/24L, 28 6L/24R, 10	CLEVELAND TOWER 6R/24L, 10/28 6L/24R	GND CON 6R/24L, 10/28 6L/24R
	<b>124.0 354.025</b> <b>126.55 354.025</b>	<b>120.9 273.45</b> <b>124.5 273.45</b>	<b>121.7 273.45</b> <b>133.6 273.45</b>

ALTERNATE MISSED APCH FIX

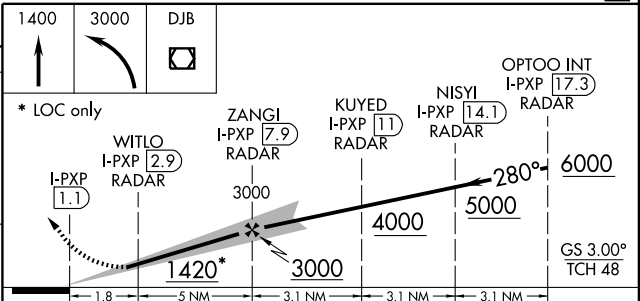
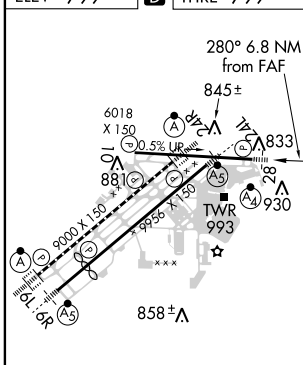
094°  
274° R-094  
SANDUSKY  
109.2 SKY  
Chan 29

CLNC DEL  
**125.05 273.45**



MISSED APCH FIX DRYER  
113.6 DJB  
Chan 83  
R-257 077°

ELEV 799	<b>D</b>	THRE 799
----------	----------	----------



CATEGORY	A	B	C	D
S-ILS 28	999/40 200 (200-¾)			
S-LOC 28	1420/40	621 (700-¾)	1420-1⅓	621 (700-1⅓)
CIRCLING	1420-1	621 (700-1)	1420-1¾ 621 (700-1¾)	1420-2 621 (700-2)
WITLO DME MINIMUMS				
S-LOC 28	1320/40	521 (600-¾)	1320/55	521 (600-1¼)
CIRCLING	1320-1	521 (600-1)	1320-1½ 521 (600-1½)	1360-2 561 (600-2)

FAF to MAP 6.8 NM

Knots	60	90	120	150	180
Min:Sec	6:48	4:32	3:24	2:43	2:16

EC-2, 31 MAY 2012 to 28 JUN 2012

EC-2, 31 MAY 2012 to 28 JUN 2012