

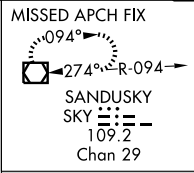
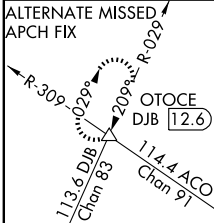
LOC/DME I-PVY 111.55 Chan 52(Y)	APP CRS 237°	Rwy Idg 9000 THRE 780 Apt Elev 799
---	------------------------	--

CONVERGING ILS RWY 24R

CLEVELAND-HOPKINS INTL (CLE)

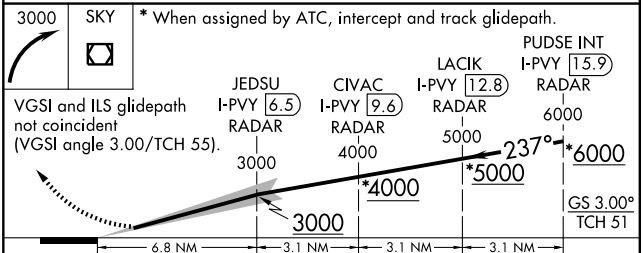
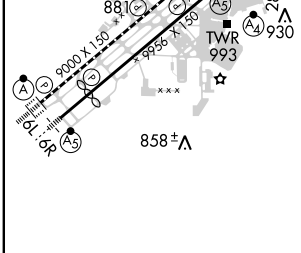
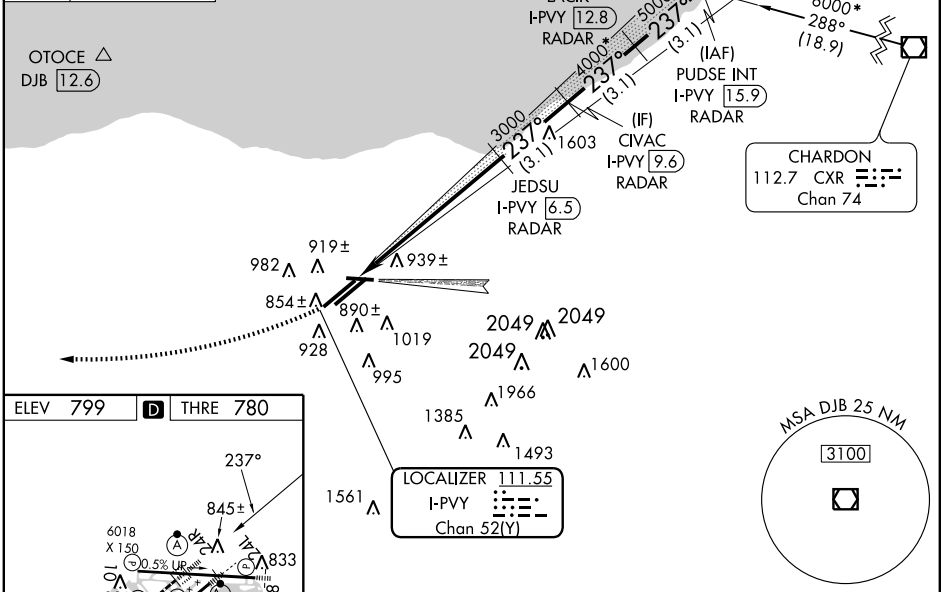
<p>Inoperative table does not apply. Simultaneous converging approach authorized with converging ILS Rwy 28. Fly visual to airport.</p>	<p>ALSF-2</p>	<p>MISSED APPROACH: Climbing right turn to 3000 direct SKY VOR/DME and hold.</p>
---	---------------	--

<p>ATIS ARR 127.85 DEP 132.375</p>	<p>CLEVELAND APP CON 6R/24L, 28 124.0 354.025 6L/24R, 10 126.55 354.025</p>	<p>CLEVELAND TOWER 6R/24L, 10/28 120.9 273.45 6L/24R 124.5 273.45</p>	<p>GND CON 6R/24L, 10/28 121.7 273.45 6L/24R 133.6 273.45</p>
--	---	---	---



RADAR REQUIRED

CINC DEL **125.05 273.45**



REIL Rwy 10 TDZ/CL Rwy 6R, 6L, 24L and 24R HIRL Rws 10-28, 6R-24L, and 6L-24R	CATEGORY	A	B	C	D
	S-ILS 24R	2240-3 1460 (1500-3)			

EC-2, 31 MAY 2012 to 28 JUN 2012

EC-2, 31 MAY 2012 to 28 JUN 2012