

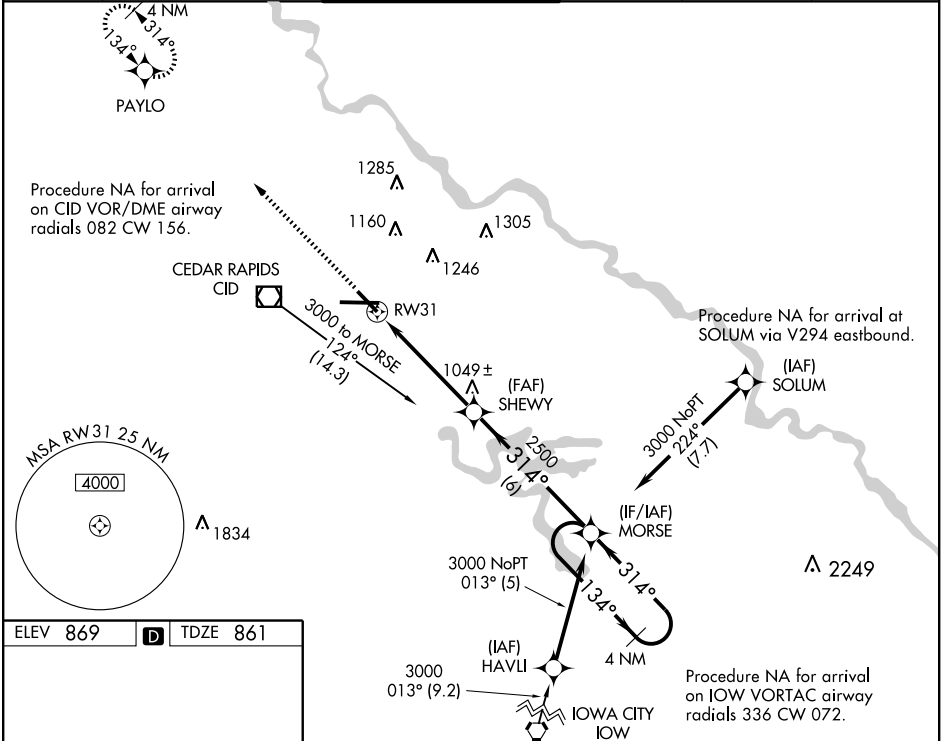
WAAS Chan 77503 W31A	APP CRS 314°	Rwy Idg TDZE Apt Elev	6199 861 869
--	------------------------	-----------------------------	---

RNAV (GPS) RWY 31

CEDAR RAPIDS/ THE EASTERN IOWA (CID)

<p>Baro-VNAV NA below -16°C (4°F). DME/DME RNP- 0.3 NA. For inoperative MALSRR increase LNAV/VNAV Cat D visibility to 1 and LNAV Cat D visibility to 1 1/4 mile.</p>	<p>MALSRR</p>	<p>MISSED APPROACH: Climb to 3000 direct PAYLO and hold.</p>
--	---------------	--

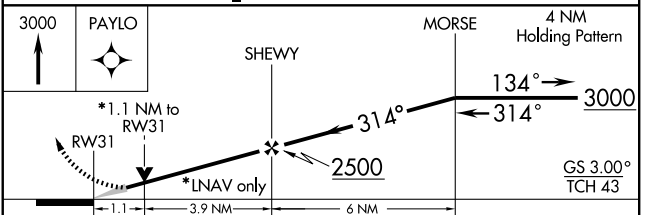
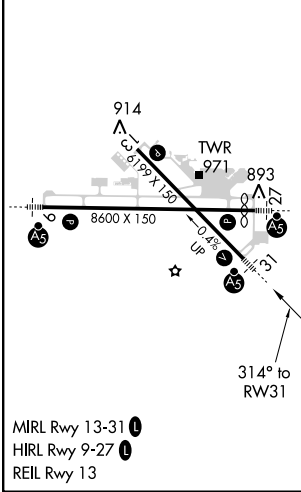
<p>ATIS 124.15</p>	<p>CEDAR RAPIDS APP CON * 119.7 266.8</p>	<p>CEDAR RAPIDS TOWER * 118.7 (CTAF) 266.8</p>	<p>GND CON 121.6</p>	<p>CLNC DEL 125.45</p>	<p>UNICOM 122.95</p>
-------------------------------	--	---	---------------------------------	-----------------------------------	---------------------------------



NC-3, 31 MAY 2012 to 28 JUN 2012

NC-3, 31 MAY 2012 to 28 JUN 2012

ELEV 869	D	TDZE 861
----------	---	----------



CATEGORY	A	B	C	D
LPV DA	1120-1/2 259 (300-1/2)			
LNAV/VNAV DA	1140-1/2 279 (300-1/2)			1140-3/4 279 (300-3/4)
LNAV MDA	1240-1/2 379 (400-1/2)			1240-1 379 (400-1)
CIRCLING	1280-1	1320-1	1320-1 1/2	1420-2
	411 (500-1)	451 (500-1)	451 (500-1 1/2)	551 (600-2)