

WAAS CH <b>72902</b> <b>W27A</b>	APP CRS <b>269°</b>	Rwy Idg <b>8175</b> TDZE <b>862</b> Apt Elev <b>869</b>
--	------------------------	---

# RNAV (GPS) RWY 27

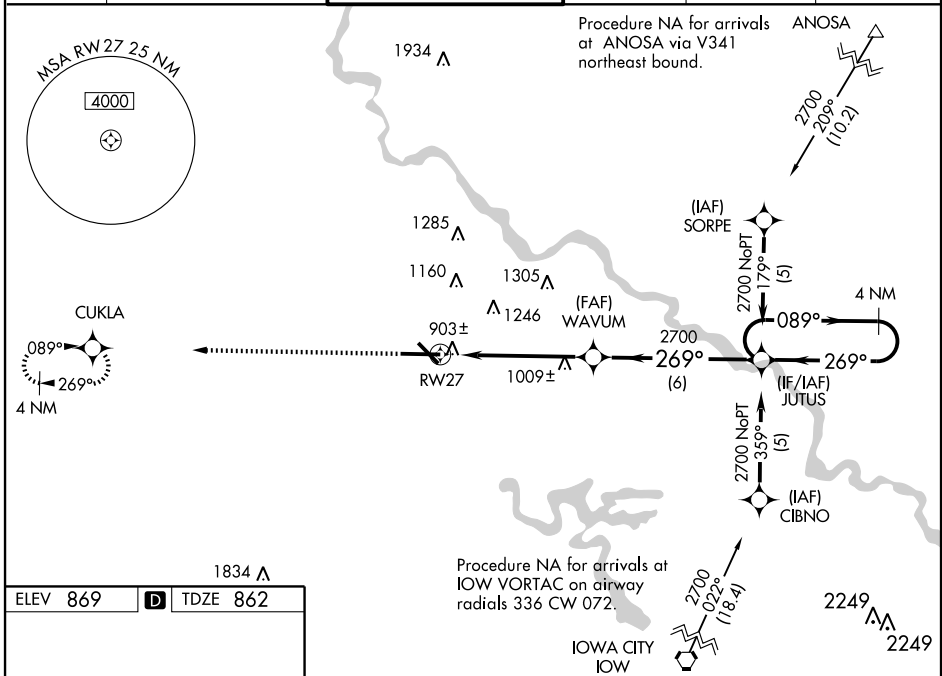
CEDAR RAPIDS/ THE EASTERN IOWA (CID)

**⚠** Baro-VNAV NA when using Iowa City altimeter setting.  
**⚠** If local altimeter setting not received, use Iowa City altimeter setting and increase all DAs/MDAs 80 feet. VDP NA when using Iowa City altimeter setting.  
 For uncompensated Baro-VNAV systems, LNAV/VNAV NA below -16°C (4°F) or above 47°C (116°F). DME/DME RNP-0.3 NA.  
 For inoperative MALSR increase LNAV/VNAV Cat. D visibility to RVR 5000 and LNAV Cat. D visibility to RVR 6000.

**MALSR**

**MISSED APPROACH:**  
Climb to 2500 direct CUKLA and hold.

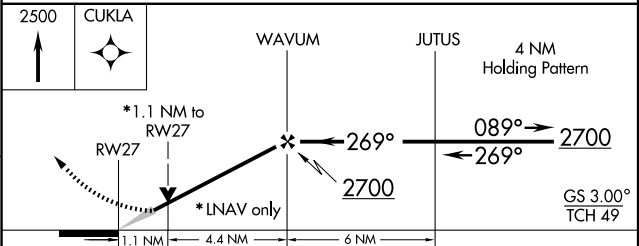
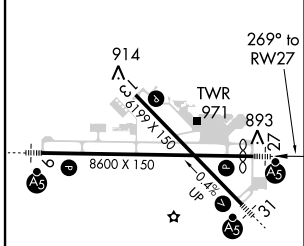
ATIS <b>124.15</b>	CEDAR RAPIDS APP CON* <b>119.7 266.8</b>	CEDAR RAPIDS TOWER* <b>118.7 (CTAF) 266.8</b>	GND CON <b>121.6</b>	CLNC DEL <b>125.45</b>	UNICOM <b>122.95</b>
-----------------------	---	--	-------------------------	---------------------------	-------------------------



NC-3, 31 MAY 2012 to 28 JUN 2012

NC-3, 31 MAY 2012 to 28 JUN 2012

ELEV <b>869</b>	<b>D</b>	TDZE <b>862</b>
-----------------	----------	-----------------



CATEGORY	A	B	C	D
LPV DA	1112/24 250 (300-½)			
LNAV/VNAV DA	1163/24 301 (300-½)			1163/40 301 (300-¾)
LNAV MDA	1260/24 398 (400-½)			1260/50 398 (400-1)
CIRCLING	1280-1 411 (500-1)	1320-1 451 (500-1)	1320-1½ 451 (500-1½)	1420-2 551 (600-2)

MIRL Rwy 13-31 **Ⓛ**  
 HIRL Rwy 9-27 **Ⓛ**  
 REIL Rwy 13