


LOC/DME I-RRU <b>111.3</b> Chan 50	APP CRS <b>269°</b>	Rwy Idg THRE 8175 860 Apt Elev 869
--	------------------------	---

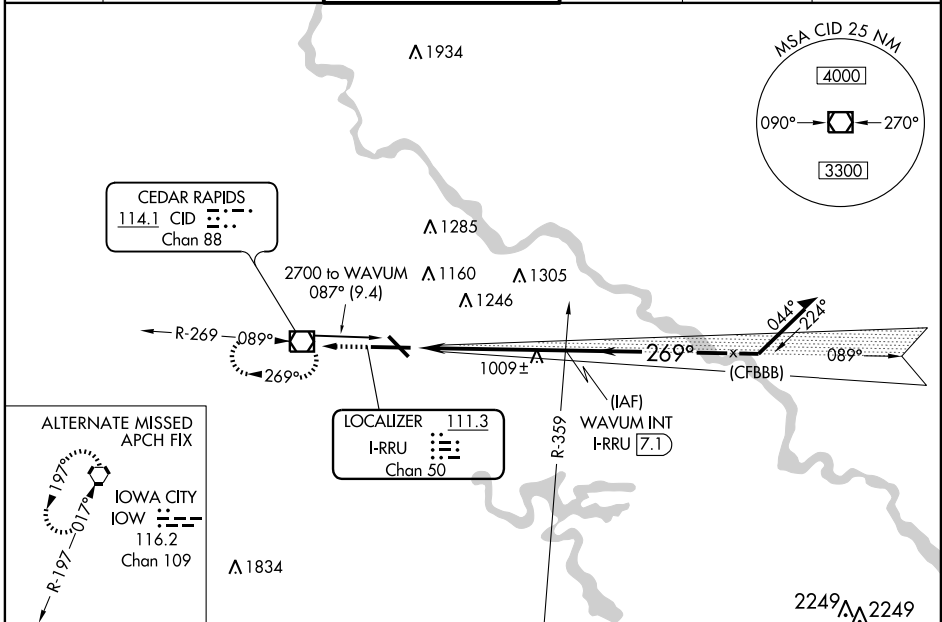
# ILS or LOC RWY 27

CEDAR RAPIDS/ THE EASTERN IOWA (CID)

**⚠** When local altimeter setting not received, use Iowa City altimeter setting increase DA 64 feet and all MDA 80 feet, increase S-LOC Cat C and D visibility to RVR 5000. VDP NA with Iowa City altimeter setting. Autopilot coupled approach NA below 1910.

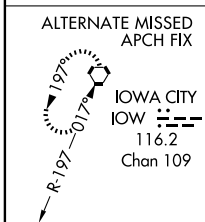
**MALSR**  
 MISSED APPROACH: Climb to 2900 direct CID VOR/DME and hold, continue climb-in-hold to 2900.

ATIS <b>124.15</b>	CEDAR RAPIDS APP CON * <b>119.7 266.8</b>	CEDAR RAPIDS TOWER * <b>118.7 (CTAF) 266.8</b>	GND CON <b>121.6</b>	CLNC DEL <b>125.45</b>	UNICOM <b>122.95</b>
-----------------------	--	---	-------------------------	---------------------------	-------------------------

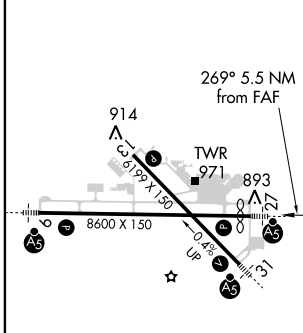


NC-3, 31 MAY 2012 to 28 JUN 2012

NC-3, 31 MAY 2012 to 28 JUN 2012



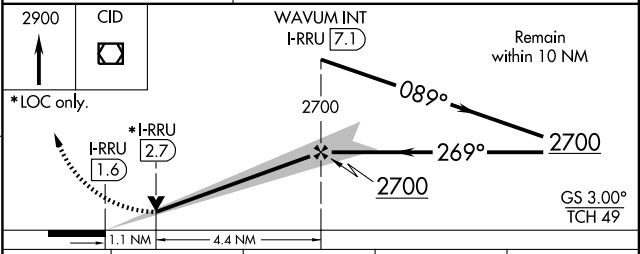
ELEV 869	<b>D</b>	THRE 860
----------	----------	----------



MIRL Rwy 13-31  
 HIRL Rwy 9-27  
 REIL Rwy 13

FAF to MAP 5.5 NM

Knots	60	90	120	150	180
Min:Sec	5:30	3:40	2:45	2:12	1:50



CATEGORY	A	B	C	D
S-ILS 27	1060/24 200 (200-½)			
S-LOC 27	1260/24 400 (400-½)	1260/35 400 (400-¾)		
CIRCLING	1280-1 411 (500-1)	1320-1 451 (500-1)	1320-1½ 451 (500-½)	1420-2 551 (600-2)