

LOC I-CID 109.3	APP CRS 089°	Rwy Idg TDZE Apt Elev	8175 857 869
---------------------------	------------------------	-----------------------------	---

ILS or LOC RWY 9

CEDAR RAPIDS/THE EASTERN IOWA (CID)

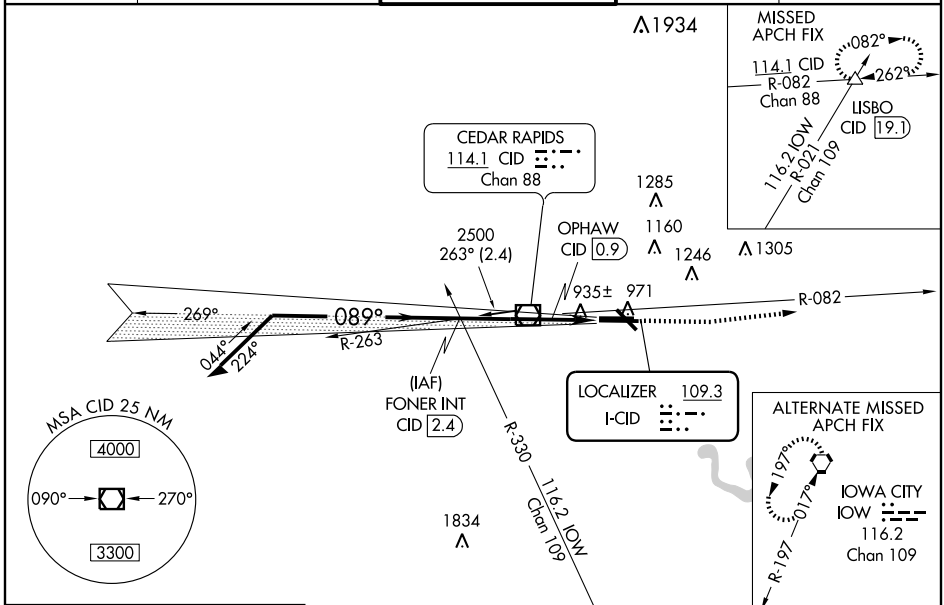
⚠ *RVR 1800 authorized with use of FD or AP or HUD to DA. When local altimeter setting not received, use Iowa City altimeter setting and increase all DA 64 feet and all MDA 80 feet; increase S-LOC Cat D visibility to RVR 6000. OPHAW FIX minimums: increase S-LOC Cat C visibility to RVR 4000 and Cat D to RVR 6000. When using Iowa City altimeter setting, for inoperative MALSR, increase S-ILS 9 all Cats visibility to RVR 5000.

MALSR



MISSED APPROACH: Climb to 1400 then climb to 2700 via CID VOR/DME R-082 via LISBO/CID VOR/DME 19.1 DME and hold.

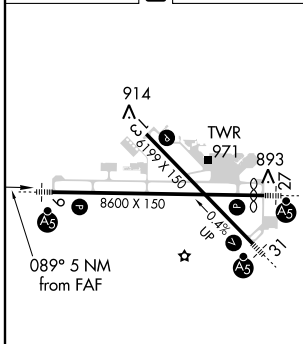
ATIS 124.15	CEDAR RAPIDS APP CON 119.7 266.8	CEDAR RAPIDS TOWER* 118.7 (CTAF) 0 266.8	GND CON 121.6	CLNC DEL 125.45
-----------------------	--	--	-------------------------	---------------------------



NC-3, 31 MAY 2012 to 28 JUN 2012

NC-3, 31 MAY 2012 to 28 JUN 2012

ELEV 869	D	TDZE 857
----------	----------	----------



**1440 When using Iowa City altimeter setting.	FONER INT CID 2.4	1400	2700	LISBO
Remain within 10 NM	2500 VOR/DME	↑	↑	△
OPHAW CID 0.9	CID 2.5	CID R-082		
**1360				

HIRL Rwys 9-27	MIRL Rwys 13-31	REIL Rwy 13			
FAF to MAP 5 NM					
Knots	60	90	120	150	180
Min:Sec	5:00	3:20	2:30	2:00	1:40

CATEGORY	A	B	C	D
S-ILS 9	*1057/24 200 (200-½)			
S-LOC 9	1360/24	503 (500-½)	1360/50	503 (500-1)
CIRCLING	1360-1	491 (500-1)	1360-1½ 491 (500-1½)	1420-2 551 (600-2)
OPHAW FIX MINIMUMS				
S-LOC 9	1220/24	363 (400-½)	1220/40 363 (400-¾)	
CIRCLING	1280-1 411 (500-1)	1320-1 451 (500-1)	1320-1½ 451 (500-1½)	1420-2 551 (600-2)