

RNAV (GPS) Y RWY 21

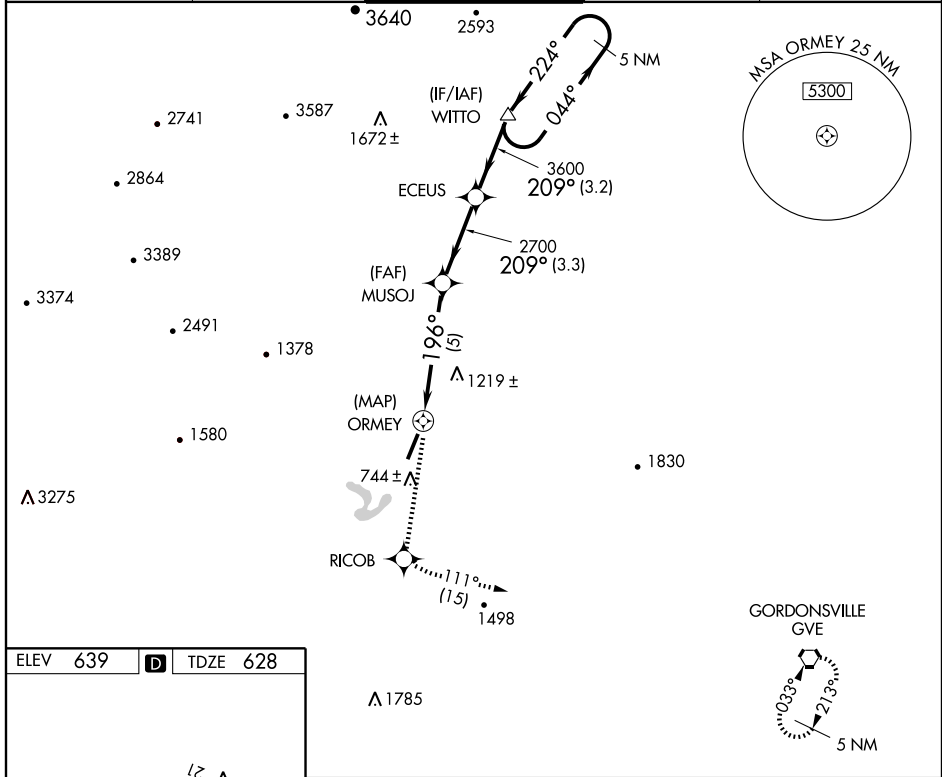
CHARLOTTESVILLE-ALBEMARLE (CHO)

APP CRS	Rwy Idg	6001
196°	TDZE	628
	Apt Elev	639

▼ DME/DME RNP-0.3 NA.
▲ If local altimeter setting not received, use Staunton/Waynesboro/Harrisonburg altimeter setting and increase all MDAs 140 feet.

MISSED APPROACH: Climb to 4000 direct RICOB and via 111° track to GVE VORTAC and hold.

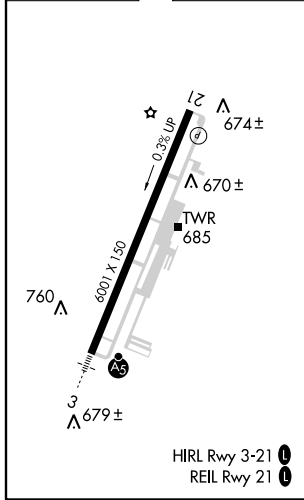
ATIS 118.425	POTOMAC APP CON 132.85 323.125	CHARLOTTESVILLE TOWER* 124.5 (CTAF) 0 338.275	GND CON 121.9 338.275	UNICOM 122.95
------------------------	--	---	---------------------------------	-------------------------



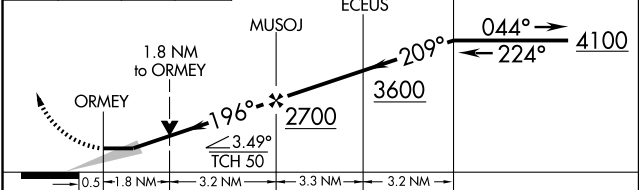
NE-3, 31 MAY 2012 to 28 JUN 2012

NE-3, 31 MAY 2012 to 28 JUN 2012

ELEV	639	D	TDZE	628
------	------------	----------	------	------------



4000	RICOB	tr 111°	GVE	VGSI and descent angles not coincident (VGSI Angle 3.00/TCH 25).	5 NM Holding Pattern
------	-------	---------	-----	--	----------------------



CATEGORY	A	B	C	D
LNAV MDA	1380-1 752 (800-1)	1380-1¼ 752 (800-1¼)	1380-2¼ 752 (800-2¼)	1380-2½ 752 (800-2½)
CIRCLING	1380-1 741 (800-1)	1380-1¼ 741 (800-1¼)	1380-2¼ 741 (800-2¼)	1560-3 921 (1000-3)