

VORTAC CEC <b>109.0</b> Chan 27	APP CRS <b>126°</b>	Rwy Idg <b>5000</b> TDZE <b>60</b> Apt Elev <b>61</b>
---------------------------------------	------------------------	---

# VOR/DME RWY 11

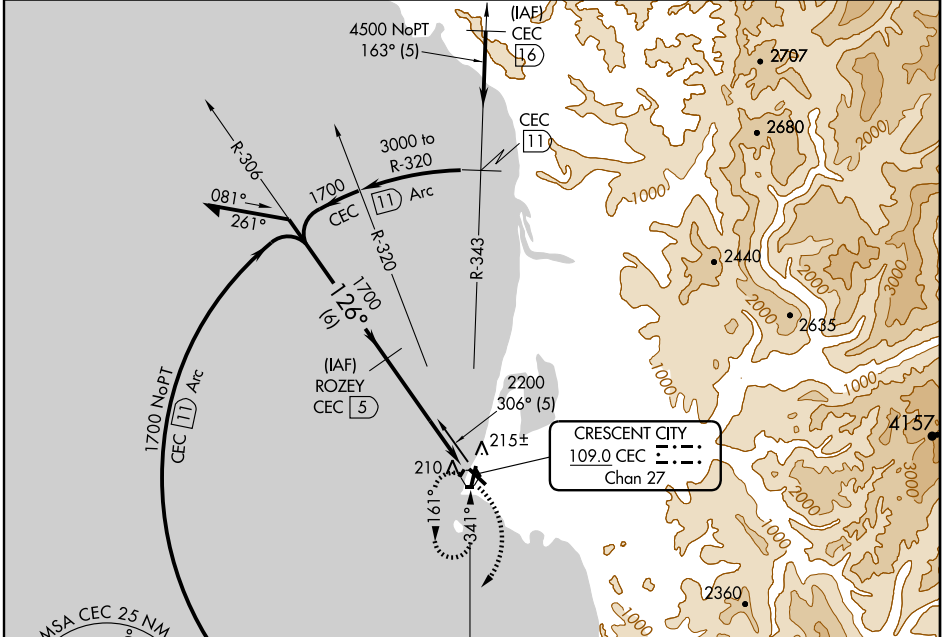
CRESCENT CITY/JACK MC NAMARA FIELD (CEC)

Inoperative table does not apply to Cat D.

MALSR

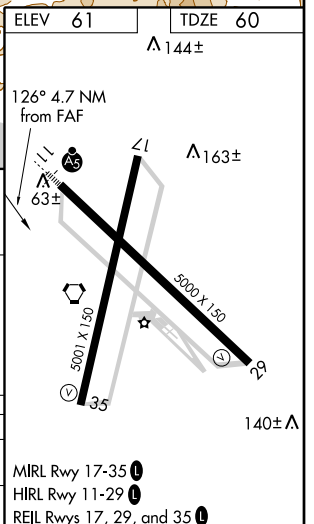
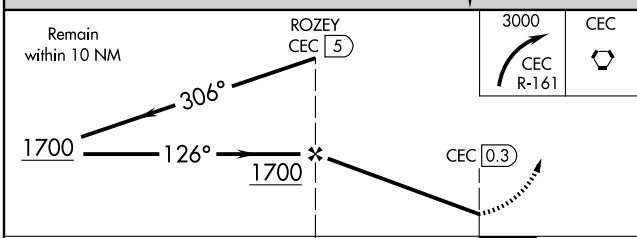
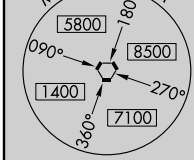
MISSED APPROACH: Climbing right turn to 3000 via CEC R-161 then direct CEC VORTAC and hold.

ASOS <b>119.925</b>	SEATTLE CENTER <b>124.85 306.3</b>	OAKLAND RADIO <b>122.3</b>	UNICOM <b>122.8</b> (CTAF) <b>0</b>
------------------------	---------------------------------------	-------------------------------	--



SW-2, 31 MAY 2012 to 28 JUN 2012

SW-2, 31 MAY 2012 to 28 JUN 2012



CATEGORY	A	B	C	D
S-11	480-½ 420 (500-½)		480-¾ 420 (500-¾)	480-1¼ 420 (500-1¼)
CIRCLING	540-1 479 (500-1)		540-1½ 479 (500-1½)	640-2 579 (600-2)