


RNAV (GPS) RWY 11

CRESCENT CITY/ JACK MC NAMARA FIELD (C/C)

WAAS CH 90310 W11A	APP CRS 114°	Rwy Idg TDZE Apt Elev	5000 57 57
--	------------------------	-----------------------------	---------------------------------------

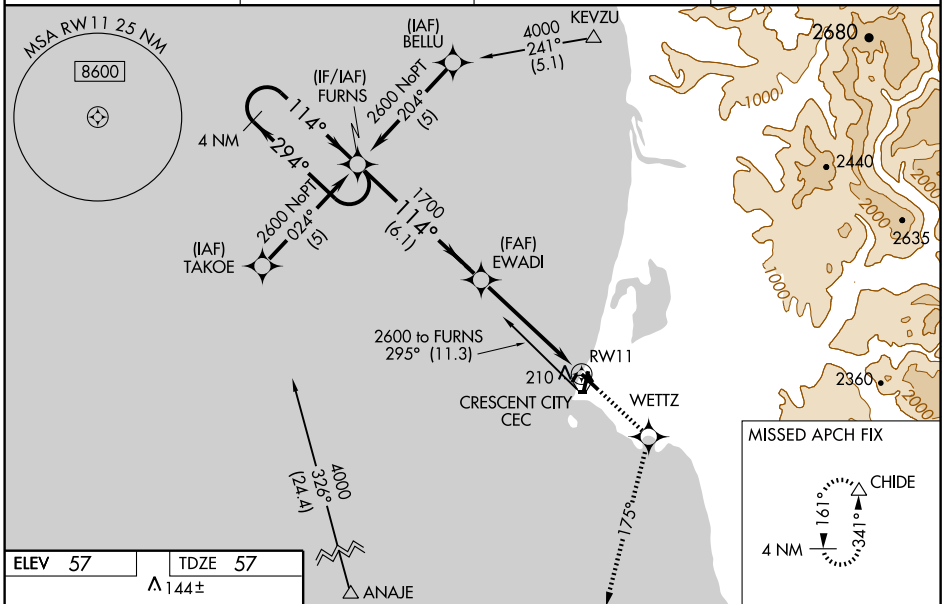
⚠ For uncompensated Baro-VNAV systems, LNAV/VNAV NA below -15°C (5°F) or above 48°C (118°F). DME/DME RNP -0.3 NA. When local altimeter setting not received, use Brookings altimeter setting and increase all DA 98 feet and all MDA 100 feet. Increase LPV all Cats visibility ¼ mile, LNAV/VNAV all Cats visibility ¼ mile, LNAV Cat C and D ½ mile, and Circling Cat C and D ¼ mile. VDP and Baro-VNAV NA when using Brookings altimeter setting. For operative MALSR, increase LNAV Cat D visibility to 1 ¼ mile. For inoperative MALSR when using Brookings altimeter setting, increase LPV all Cats visibility to 1 ¼ mile.

MALSR



MISSED APPROACH: Climb to 3000 direct WETTZ and via 175° track to CHIDE and hold, continue climb-in-hold to 3000.

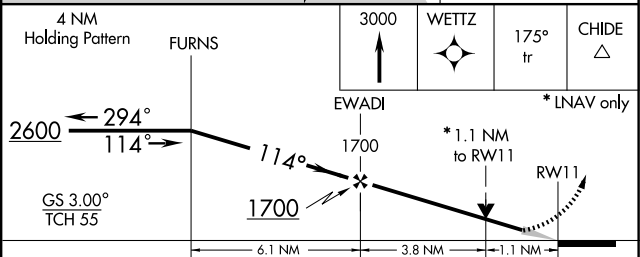
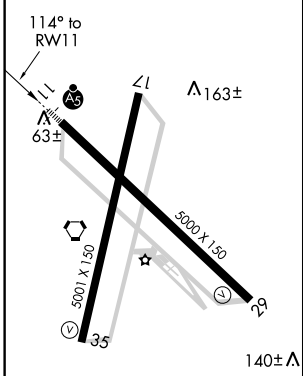
ASOS 119.925	SEATTLE CENTER 124.85 306.3	OAKLAND RADIO 122.3	UNICOM 122.8 (CTAF)
------------------------	---------------------------------------	-------------------------------	-------------------------------



SW-2, 31 MAY 2012 to 28 JUN 2012

SW-2, 31 MAY 2012 to 28 JUN 2012

ELEV 57	TDZE 57
A 144±	



CATEGORY	A	B	C	D
LPV DA		307-½	250 (300-½)	
LNAV/VNAV DA		556-1¼	499 (500-1¼)	
LNAV MDA	460-½	403 (500-½)	460-¾ 403 (500-¾)	460-1 403 (500-1)
CIRCLING	540-1	483 (500-1)	540-1½ 483 (500-1½)	640-2 583 (600-2)

MIRL Rwy 17-35
HIRL Rwy 11-29
REIL Rwy 17, 29, and 35