


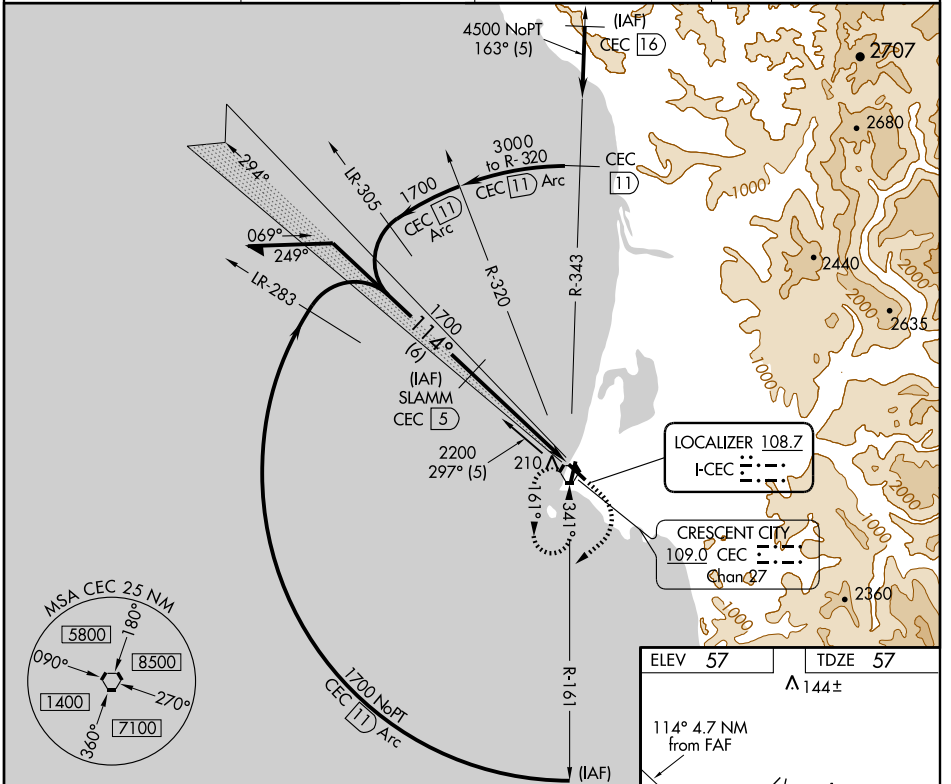
# ILS/DME RWY 11

CRESCENT CITY/ JACK MC NAMARA FIELD (CEC)

LOC I-CEC <b>108.7</b>	APP CRS <b>114°</b>	Rwy ldg TDZE Apt Elev	<b>5000</b> <b>57</b> <b>57</b>
---------------------------	------------------------	-----------------------------	---------------------------------------

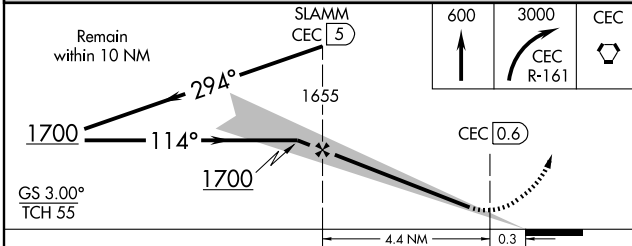
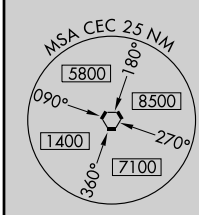
<p><b>▼</b> DME from CEC VORTAC. Simultaneous reception of I-CEC and CEC DME required. Inoperative table does not apply to S-LOC 11 Cat D.</p>	<p>MALSR  </p>	<p>MISSED APPROACH: Climb to 600 then climbing right turn to 3000 via CEC R-161, then direct CEC VORTAC and hold.</p>
--	---	---

ASOS <b>119.925</b>	SEATTLE CENTER <b>124.85 306.3</b>	OAKLAND RADIO <b>122.3</b>	UNICOM <b>122.8 (CTAF) 0</b>
------------------------	---------------------------------------	-------------------------------	---------------------------------

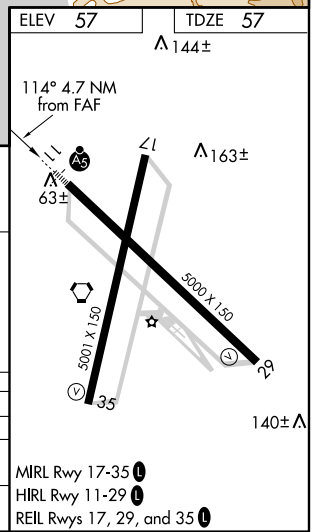


SW-2, 31 MAY 2012 to 28 JUN 2012

SW-2, 31 MAY 2012 to 28 JUN 2012



CATEGORY	A	B	C	D
S-ILS 11		257-½ 200 (200-½)		
S-LOC 11		320-½ 263 (300-½)		320-1 263 (300-1)
CIRCLING	540-1 483 (500-1)		540-1½ 483 (500-1½)	640-2 583 (600-2)



- MRL Rwy 17-35 0
- HRL Rwy 11-29 0
- REL Rws 17, 29, and 35 0