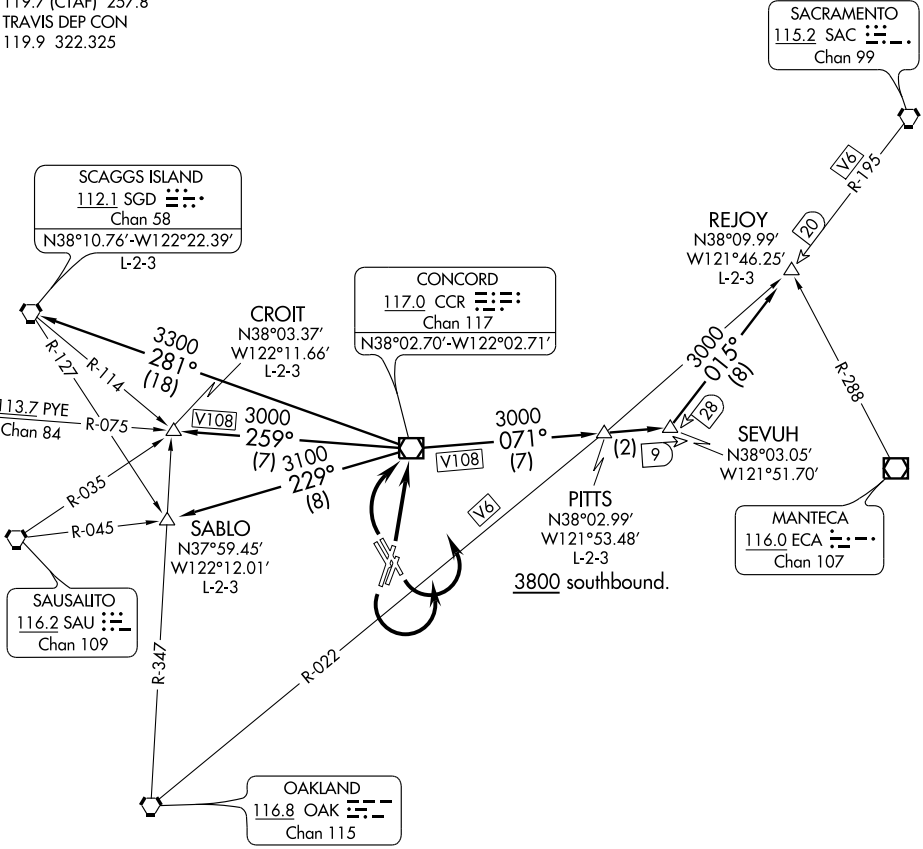


BUCHANAN NINE DEPARTURE

GND CON
121.9
CONCORD TOWER *
119.7 (CTAF) 257.8
TRAVIS DEP CON
119.9 322.325



SW-2, 31 MAY 2012 to 28 JUN 2012

SW-2, 31 MAY 2012 to 28 JUN 2012

TAKE-OFF MINIMUMS

- Rwys 1L, 14L, 19R, 32R: Standard with the following minimum climb requirements:
- Rwy 1L: Obstacle climb of 360' per NM to 1100 (3800 for PITTS Transition).
ATC climb of 360' per NM to 3000.
- Rwy 14L: Obstacle climb of 420' per NM to 2700 (3800 for PITTS Transition).
ATC climb of 420' per NM to 3000.
- Rwy 19R: Obstacle climb of 490' per NM to 4000.
- Rwy 32R: Obstacle climb of 360' per NM to 500 (3800 for PITTS Transition).
ATC climb of 320' per NM to 3000.
- Rwys 1R, 14R, 19L, 32L: NA-air traffic.

(NARRATIVE ON FOLLOWING PAGE)

NOTE: Chart not to scale.

BUCHANAN NINE DEPARTURE



DEPARTURE ROUTE DESCRIPTION

TAKE-OFF RUNWAY 1L: Climb direct CCR VOR/DME . Thence

TAKE-OFF RUNWAY 14L: Climbing left turn direct CCR VOR/DME. Thence

TAKE-OFF RUNWAY 19R: Climbing left turn direct CCR VOR/DME. Thence

TAKE-OFF RUNWAY 32R: Climbing right turn direct CCR VOR/DME. Thence

....via (transition) or (assigned route).

CROIT TRANSITION (BCHN9.CROIT): From over CCR VOR/DME via CCR R-259 to CROIT INT.

PITTS TRANSITION (BCHN9.PITTS): From over CCR VOR/DME via CCR R-071 to PITTS INT.

REJOY TRANSITION (BCHN9.REJOY): From over CCR VOR/DME via CCR R-071 and SAC R-195 to REJOY INT.

SABLO TRANSITION (BCHN9.SABLO): From over CCR VOR/DME via CCR R-229 to SABLO INT.

SCAGGS ISLAND TRANSITION (BCHN9.SGD): From over CCR VOR/DME via CCR R-281 to SGD VORTAC.

TAKE-OFF OBSTACLE NOTES

- Rwy 1L: Multiple trees and bushes beginning 675' from DER, 9' left of centerline, up to 48' AGL/98' MSL. Multiple poles, light poles and antennas on buildings beginning 639' from DER, 120' left of centerline, up to 50' AGL/72' MSL.
Fence 117' from DER, 2' right of centerline, 12' AGL/29' MSL.
Sign 1996' from DER, 812' left of centerline, 45' AGL/78' MSL.
Flagpole 1520' from DER, 753' left of centerline, 40' AGL/71' MSL.
- Rwy 14L: Multiple trees beginning 841' from DER, 61' left of centerline, up to 78' AGL/102' MSL.
Building 1071' from DER, 35' left of centerline, 30' AGL/58' MSL.
Fence 225' from DER, 29' left of centerline, 12' AGL/33' MSL.
- Rwy 19R: Multiple trees beginning 604' from DER, 82' left of centerline, up to 70' AGL/108' MSL.
Light pole 1392' from DER, 749' right of centerline, 51' AGL/71' MSL.
OL on building 2451' from DER, 911' left of centerline, 73' AGL/97' MSL.
Fence 123' from DER, 503' left of centerline, 6' AGL/30' MSL.
- Rwy 32R: Train 1 NM from DER, 1948' left of centerline, 23' AGL/102' MSL.
OL on hopper 2110' from DER, 601' right of centerline, 79' AGL/99' MSL.
OL on tank 1.1 NM from DER, 1426' right of centerline, 193' AGL/213' MSL.
Flagpole 655' from DER, 300' right of centerline, 35' AGL/43' MSL.
Sign 697' from DER, 248' right of centerline, 25' AGL/41' MSL.
Road/vehicle 561' from DER, on centerline, 15' AGL/49' MSL.
Building 633' from DER, 246' left of centerline, 20' AGL/35' MSL.
Tree 825' from DER, 635' left of centerline, 25' AGL/40' MSL.
TRMSN tower 6015' from DER, 1839' left of centerline, 145' AGL/173' MSL.

SW-2, 31 MAY 2012 to 28 JUN 2012

SW-2, 31 MAY 2012 to 28 JUN 2012