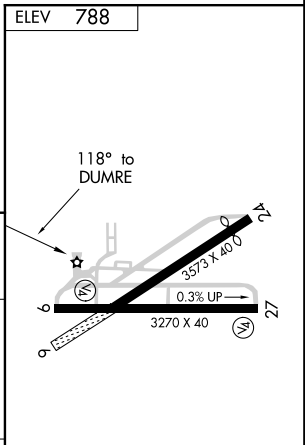
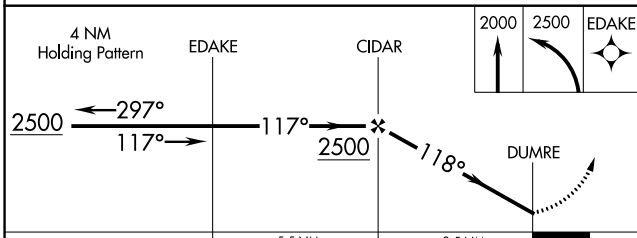
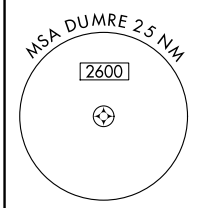
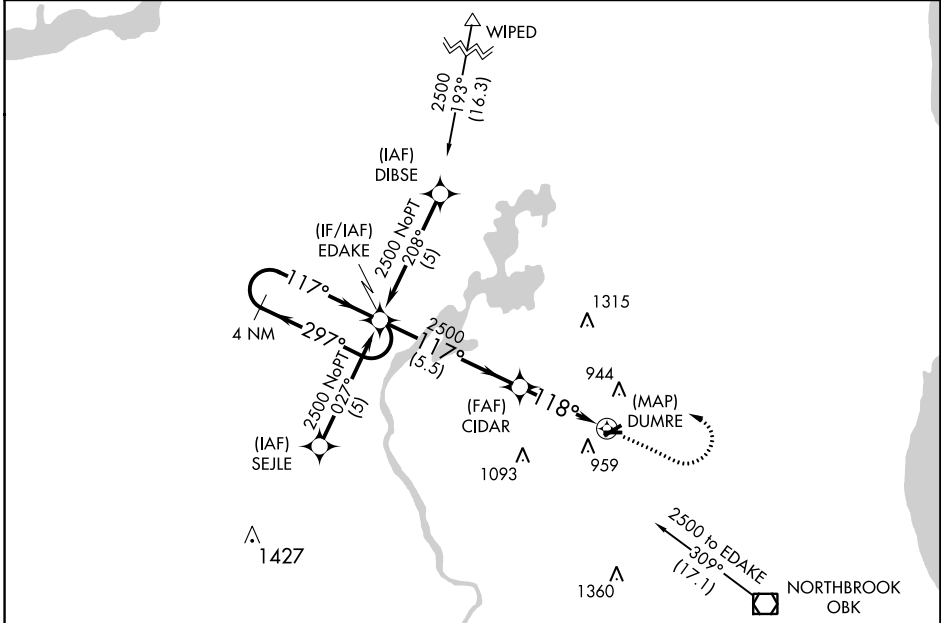


RNAV (GPS)-B
CAMPBELL (C81)

APP CRS	Rwy Idg	N/A
118°	TDZE	N/A
	Apt Elev	788

<p>▼ Use Chicago O'Hare altimeter setting. ▲ NA GPS or RNP-0.3 Required. DME/DME-0.3 NA.</p>	<p>MISSED APPROACH: Climb to 2000, then climbing left turn to 2500 direct EDAKE WP and hold.</p>
<p>CHICAGO APP CON 120.55 306.925</p>	<p>UNICOM 122.7 (CTAF)</p>



CATEGORY	A	B	C	D
CIRCLING	1380-1 592 (600-1)		1380-1½ 592 (600-1½)	NA

EC-3: 27 APR 2017 to 25 MAY 2017

EC-3: 27 APR 2017 to 25 MAY 2017

TAKEOFF MINIMUMS, (OBSTACLE) DEPARTURE PROCEDURES, AND DIVERSE VECTOR AREA (RADAR VECTORS)

17117

INSTRUMENT APPROACH PROCEDURE CHARTS

IFR TAKEOFF MINIMUMS AND (OBSTACLE) DEPARTURE PROCEDURES

Civil Airports and Selected Military Airports

ALL USERS: Airports that have Departure Procedures (DPs) designed specifically to assist pilots in avoiding obstacles during the climb to the minimum enroute altitude, and/or airports that have civil IFR takeoff minimums other than standard, are listed below. Takeoff Minimums and Departure Procedures apply to all runways unless otherwise specified. Altitudes, unless otherwise indicated, are minimum altitudes in MSL.

DPs specifically designed for obstacle avoidance are referred to as Obstacle Departure Procedures (ODPs) and are textually described below, or published separately as a graphic procedure. If the ODP is published as a graphic procedure, its name will be listed below, and it can be found in either this volume (civil), or the applicable military volume, as appropriate. Users will recognize graphic obstacle DPs by the term "(OBSTACLE)" included in the procedure title; e.g., TETON TWO (OBSTACLE). If not specifically assigned an ODP, SID, or radar vector as part of an IFR clearance, an ODP may be required to be flown for obstacle clearance, even though not specifically stated in the IFR clearance. When doing so in this manner, ATC should be informed when the ODP being used contains a specified route to be flown, restrictions before turning, and/or altitude restrictions.

Some ODPs, which are established solely for obstacle avoidance, require a climb in visual conditions to cross the airport, a fix, or a NAVAID in a specified direction, at or above a specified altitude. These procedures are called Visual Climb Over Airport (VCOA). To ensure safe and efficient operations, the pilot must verbally request approval from ATC to fly the VCOA when requesting their IFR clearance.

At some locations where an ODP has been established, a diverse vector area (DVA) may be created to allow radar vectors to be used in lieu of an ODP. DVA information will state that headings will be as assigned by ATC and climb gradients, when applicable, will be published immediately following the specified departure procedure.

Graphic DPs designed by ATC to standardize traffic flows, ensure aircraft separation and enhance capacity are referred to as "Standard Instrument Departures (SIDs)". SIDs also provide obstacle clearance and are published under the appropriate airport section. ATC clearance must be received prior to flying a SID.

CIVIL USERS NOTE: Title 14 Code of Federal Regulations Part 91 prescribes standard takeoff rules and establishes takeoff minimums for certain operators as follows: (1) For aircraft, other than helicopters, having two engines or less – one statute mile visibility. (2) For aircraft having more than two engines – one-half statute mile visibility. (3) For helicopters – one-half statute mile visibility. These standard minima apply in the absence of any different minima listed below.

MILITARY USERS NOTE: Civil (nonstandard) takeoff minima are published below. For military takeoff minima, refer to appropriate service directives.

NAME	TAKEOFF MINIMUMS	NAME	TAKEOFF MINIMUMS
------	------------------	------	------------------

ALTON/ST. LOUIS, IL
ST. LOUIS RGNL (ALN)
TAKEOFF MINIMUMS AND (OBSTACLE)
DEPARTURE PROCEDURES
AMDT 2 11125 (FAA)

NOTE: **Rwy 11**, tree and pole beginning 1066' from DER, 668' left of centerline, up to 76' AGL/575' MSL. Tree 2822' from DER, 933' right of centerline, 100' AGL/629' MSL. **Rwy 17**, trees beginning 1063' from DER, 282' left of centerline, up to 67' AGL/606' MSL. Trees beginning 1321' from DER, 115' right of centerline, up to 100' AGL/621' MSL. **Rwy 29**, trees and floodlight on hangar beginning 665' from DER, 472' left of centerline, up to 100' AGL/649' MSL. Trees beginning 1570' from DER, 204' right of centerline, up to 75' AGL/604' MSL. **Rwy 35**, trees beginning 1286' from DER, 477' left of centerline, up to 67' AGL/596' MSL.

AMERY, WI
AMERY MUNI (AHH)
TAKEOFF MINIMUMS AND (OBSTACLE)
DEPARTURE PROCEDURES
AMDT 1B 16231 (FAA)

TAKEOFF MINIMUMS: **Rwy 18**, 400-1½ or std. with a min. climb of 335' per NM to 1600
NOTE: **Rwy 18**, navaid 8' from DER, 97' left of centerline, 15' AGL/1089' MSL. Tree 301' from DER, 480' left of centerline, 100' AGL/1124' MSL. Tree 410' from DER, 472' left of centerline, 100' AGL/1127' MSL. Vehicles on road beginning 608' from DER, crossing left and right of centerline, up to 15' AGL/1110' MSL. Trees beginning 667' from DER, 419' left of centerline, up to 100 AGL/1131' MSL. Trees beginning 644' from DER, 41' right of centerline, up to 100 AGL/1125' MSL. Trees, pole, tank beginning 708' from DER, 559' right of centerline, up to 1167' MSL. Tower 6684' from DER, 2073' left of centerline, 140' AGL/1340' MSL.

17117

TAKEOFF MINIMUMS, (OBSTACLE) DEPARTURE PROCEDURES, AND DIVERSE VECTOR AREA (RADAR VECTORS)

**TAKEOFF MINIMUMS, (OBSTACLE) DEPARTURE PROCEDURES, AND
DIVERSE VECTOR AREA (RADAR VECTORS)**

17117

AMERY, WI (CON'T)**AMERY MUNI (CON'T)**

Rwy 36, vehicles on road beginning 12' from DER, crossing left and right of centerline, up to 15' AGL/1191' MSL. Trees beginning 83' from DER, 151' right of centerline, up to 100' AGL/1092' MSL. Trees beginning 287' from DER, 269' right of centerline, up to 100' AGL/1117' MSL. Trees beginning 1022' from DER, 22' right of centerline, up to 100' AGL/1151' MSL. Trees beginning 2295' from DER, 98' right of centerline, up to 100' AGL/1155' MSL. Trees beginning 2856' from DER, 179' right of centerline, up to 100' AGL/1173' MSL. Pole and tree 352' from DER, 564' left of centerline, up to 1102' MSL. Tree 569' from DER, 256' left of centerline, 100' AGL/1118' MSL. Trees and pole beginning 611' from DER, 396' left of centerline, up to 100' AGL/1149' MSL. Trees beginning 2093' from DER, 270' left of centerline, up to 100' AGL/1150' MSL. Trees beginning 3827' from DER, 387' left of centerline, up to 100' AGL/1190' MSL.

ANTIGO, WI**LANGLADE COUNTY (AIG)****TAKEOFF MINIMUMS AND (OBSTACLE)****DEPARTURE PROCEDURES****AMDT 1 13206 (FAA)**

TAKEOFF MINIMUMS: Rwy 9, 300-2/4 or std. w/min. climb gradient of 215' per NM to 1900, or alternatively, with standard takeoff minimums and a normal 200' per NM climb gradient, takeoff must occur no later than 1700' prior to DER.

NOTE: Rwy 9, sign 28' from DER, 124' left of centerline, 1' AGL/1524' MSL. Fence 207' from DER, 440' right of centerline, 10' AGL/1534' MSL. Buildings beginning 432' from DER, 486' right of centerline, up to 28' AGL/1552' MSL. Trees beginning 1073' from DER, 637' left of centerline, up to 64' AGL/1597' MSL. Trees beginning 1.6 NM from DER, 1895' right of centerline, 100' AGL/1799' MSL. **Rwy 17**, vehicles on road beginning 17' from DER, 273' left of centerline, up to 15' AGL/1531' MSL. Vehicles on road beginning 62' from DER, 247' right of centerline, up to 15' AGL/1529' MSL. **Rwy 27**, trees beginning 1032' from DER, 379' right of centerline, up to 73' AGL/1587' MSL. Pole 1142' from DER, 552' right of centerline, 32' AGL/1546' MSL. Tree 1784' from DER, 159' right of centerline, 55' AGL/1589' MSL. Trees beginning 1925' from DER, 2' right of centerline, up to 66' AGL/1580' MSL. Tree 2043' from DER, 225' left of centerline, 60' AGL/1574' MSL. Tree 2503' from DER, 63' right of centerline, 71' AGL/1580' MSL. **Rwy 35**, sign 226' from DER, 493' left of centerline, 29' AGL/1543' MSL. Building 623' from DER, 665' left of centerline, 32' AGL/1551' MSL. Trees beginning 896' from DER, 499' right of centerline, up to 62' AGL/1586' MSL. Poles beginning 1049' from DER, 448' left of centerline, up to 33' AGL/1557' MSL. Trees beginning 1463' from DER, 471' left of centerline, up to 63' AGL/1587' MSL. Trees beginning 2334' from DER, 1108' right of centerline, up to 69' AGL/1598' MSL.

APPLETON, WI**APPLETON INTL (ATW)****TAKEOFF MINIMUMS AND (OBSTACLE)****DEPARTURE PROCEDURES****ORIG-A 15344 (FAA)**

NOTE: Rwy 3, antenna on building, 266' from DER, 259' right of centerline, 12' AGL/891' MSL. Trees beginning 545' from DER, 467' right of centerline, up to 42' AGL/911' MSL. **Rwy 12**, tree, 85' from DER, 310' left of centerline, 13' AGL/861' MSL. **Rwy 30**, trees beginning 568' from DER, 575' right of centerline, up to 21' AGL/950' MSL.

ASHLAND, WI**JOHN F. KENNEDY MEMORIAL (ASX)****TAKEOFF MINIMUMS AND (OBSTACLE)****DEPARTURE PROCEDURES****AMDT 1 08157 (FAA)**

NOTE: Rwy 2, trees beginning 52' from DER, 209' right of centerline, up to 100' AGL/939' MSL. Trees beginning 119' from DER, 110' left of centerline, up to 100' AGL/929' MSL. Antenna 2411' from DER, 920' left of centerline, 117' AGL/926' MSL. **Rwy 13**, trees beginning 44' from DER, 161' right of centerline, up to 100' AGL/878' MSL. Trees beginning 831' from DER, 241' left of centerline, up to 100' AGL/868' MSL. **Rwy 20**, truck on road 329' from DER, 576' right of centerline, 15' AGL/844' MSL. Trees beginning 206' from DER, 229' right of centerline, up to 100' AGL/893' MSL. Trees beginning 1152' from DER, 295' left of centerline, up to 100' AGL/893' MSL. **Rwy 31**, truck on road 65' from DER, 325' right and 331' left of centerline, 15' AGL/844' MSL. Trees beginning 90' from DER, 172' right of centerline, up to 100' AGL/919' MSL. Trees beginning 34' from DER, 222' left of centerline, up to 100' AGL/838' MSL.

27 APR 2017 to 25 MAY 2017

27 APR 2017 to 25 MAY 2017

17117

**TAKEOFF MINIMUMS, (OBSTACLE) DEPARTURE PROCEDURES, AND
DIVERSE VECTOR AREA (RADAR VECTORS)**

TAKEOFF MINIMUMS, (OBSTACLE) DEPARTURE PROCEDURES, AND DIVERSE VECTOR AREA (RADAR VECTORS)

17117

BARABOO, WI

BARABOO WISCONSIN DELLS (DLL)

TAKEOFF MINIMUMS AND (OBSTACLE)
DEPARTURE PROCEDURES

AMDT 1 13206 (FAA)

TAKEOFF MINIMUMS: **Rwy 14**, std. w/min. climb of 225' per NM to 2700 or 1100-2½ for climb in visual conditions.

DEPARTURE PROCEDURE: **Rwy 14**, for climb in visual conditions: cross Baraboo Wisconsin Dells airport at or above 1900 before proceeding on course. **Rwy 19**, climb to 1800 before turning left.

NOTE: **Rwy 1**, navaid 11' from DER, 20' left of centerline, 2' AGL/969' MSL. Runway end indicator 10' from DER, 86' right of centerline, 4' AGL/969' MSL. Runway end indicator 11' from DER, 87' left of centerline, 3' AGL/970' MSL. Terrain beginning 250' from DER, 124' left of centerline, up to 984' MSL. Tree 601' from DER, 570' left of centerline, 33' AGL/1009' MSL. Trees beginning 1163' from DER, 48' left of centerline, up to 86' AGL/1054' MSL. Bushes beginning 30' from DER, 170' right of centerline, up to 2' AGL/979' MSL. Trees and terrain beginning 18' from DER, 5' right of centerline, up to 135' AGL/1111' MSL. **Rwy 14**, fence post 72' from DER, 299' left of centerline, 11' AGL/988' MSL. Trees and terrain beginning 113' from DER, 93' right of centerline, up to 75' AGL/1063' MSL. Trees and terrain beginning 61' from DER, 61' left of centerline, up to 34' AGL/1006' MSL. **Rwy 19**, navaid 9' from DER, 16' left of centerline, 4' AGL/979' MSL. Navaid 9' from DER, 19' right of centerline, 4' AGL/979' MSL. Runway end indicator 39' from DER, 112' right of centerline, 4' AGL/979' MSL. Runway end indicator 39' from DER, 110' left of centerline, 4' AGL/979' MSL. Trees and terrain beginning 245' from DER, 70' right of centerline, up to 61' AGL/1033' MSL. Terrain beginning 143' from DER, 54' left of centerline, up to 984' MSL. **Rwy 32**, terrain 102' from DER, 424' right of centerline, 974' MSL.

BELLEVILLE, IL

SCOTT AFB, MID AMERICA (BLV)

TAKEOFF MINIMUMS AND (OBSTACLE)
DEPARTURE PROCEDURES

ORIG 10210 (FAA)

TAKEOFF MINIMUMS: **Rwy 32L**, 300-1½ or std. w/ a min. climb of 250' per NM to 800.

NOTE: **Rwy 32L**, tree 1.24 NM from DER, 2285' left of centerline, 100' AGL/699' MSL. **Rwy 32R**, trees beginning 352' from DER, 198' left of centerline, up to 77' AGL/501' MSL. Trees beginning 1349' from DER, 439' right of centerline, up to 94' AGL/516' MSL.

BELOIT, WI

BELOIT (44C)

TAKEOFF MINIMUMS AND (OBSTACLE)
DEPARTURE PROCEDURES

ORIG 14317 (FAA)

NOTE: **Rwy 7**, vehicles on road beginning 11' from DER, left and right of centerline, up to 15' AGL/844' MSL. Trees beginning 13' from DER, 241' right of centerline, 75' AGL/894' MSL. Tree 20' from DER, 220' left of centerline, 75' AGL/894' MSL. Silo 86' from DER, 230' left of centerline, 100' AGL/919' MSL. Tree 146' from DER, 31' left of centerline, 75' AGL/904' MSL. Tree 278' from DER, 305' left of centerline, 75' AGL/904' MSL. Tree 827' from DER, 693' left of centerline, 75' AGL/894' MSL. Tree 4827' from DER, 1523' right of centerline, 75' AGL/944' MSL. **Rwy 25**, trees beginning 47' from DER, 35' right of centerline, 75' AGL/884' MSL. Tree 180' from DER, 237' left of centerline, 75' AGL/874' MSL.

BENTON, IL

BENTON MUNI (H96)

TAKEOFF MINIMUMS AND (OBSTACLE)
DEPARTURE PROCEDURES

ORIG 11181 (FAA)

NOTE: **Rwy 18**, trees and signs beginning 290' from DER, 572' left of centerline, up to 117' AGL/579' MSL. Trees, poles, and building beginning 95' from DER, 406' right of centerline, up to 100' AGL/559' MSL. **Rwy 36**, trees beginning 419' from DER, 507' left of centerline, up to 100' AGL/549' MSL. Trees beginning 420' from DER, 602' right of centerline, up to 100' AGL/539' MSL. Vehicle on road 726' from DER, 1' right of centerline, 15' AGL/464' MSL.

BLACK RIVER FALLS, WI

BLACK RIVER FALLS AREA (BCK)

TAKEOFF MINIMUMS AND (OBSTACLE)
DEPARTURE PROCEDURES

AMDT 2 12236 (FAA)

TAKEOFF MINIMUMS: **Rwy 26**, 400-3 or std. w/min. climb of 210' per NM to 1400.

NOTE: **Rwy 8**, trees 173' from DER, 271' right of centerline, up to 10' AGL/841' MSL. OL on WSK 300' from DER, 400' left of centerline, 23' AGL/863' MSL. Vehicle on road, 460' from DER, 606' left of centerline, 15' AGL/852' MSL. Poles 1100' from DER, left and right of centerline, up to 32' AGL/872' MSL. Trees beginning 1112' from DER, left and right of centerline, up to 53' AGL/919' MSL. **Rwy 26**, vehicle on road, 155' from DER, 440' right of centerline, 15' AGL/849' MSL. Fence 2' from DER, left and right of centerline, 7' AGL/827' MSL. Trees beginning 16' from DER, left and right of centerline, up to 7' AGL/1219' MSL.

BLOOMINGTON-NORMAL, IL

CENTRAL IL RGNL ARPT AT BLOOMINGTON
-NORMAL (BMI)

TAKEOFF MINIMUMS AND (OBSTACLE)
DEPARTURE PROCEDURES

ORIG-A 15288 (FAA)

DEPARTURE PROCEDURE: **Rwy 20**, climb heading 201° to 1400 before turning left.

NOTE: **Rwy 2**, tower 1639' from DER, 908' right of centerline, 78' AGL/922' MSL. **Rwy 11**, trees beginning 2069' from DER, 870' right of centerline, up to 100' AGL/979' MSL. **Rwy 29**, vehicle on road 103' from DER, 471' right of centerline, 15' AGL/884' MSL. Tree 1667' from DER, 462' left of centerline, 100' AGL/979' MSL.

17117

TAKEOFF MINIMUMS, (OBSTACLE) DEPARTURE PROCEDURES, AND DIVERSE VECTOR AREA (RADAR VECTORS)

TAKEOFF MINIMUMS, (OBSTACLE) DEPARTURE PROCEDURES, AND DIVERSE VECTOR AREA (RADAR VECTORS)

17117

BOLINGBROOK, IL

BOLINGBROOK'S CLOW INTL (1C5)

TAKEOFF MINIMUMS AND (OBSTACLE)

DEPARTURE PROCEDURES

AMDT 1 17117 (FAA)

NOTE: **Rwy 18**, trees and buildings beginning 38' from DER, 299' left of centerline, up to 100' MSL/755ft MSL. hangars and trees beginning 55' from DER, 223' right of centerline, up to 100' AGL/750' MSL. Trees beginning 551' from DER, left and right of centerline, up to 750' MSL. **Rwy 36**, trees and buildings beginning 304' from DER, 281' left of centerline, up to 100' AGL/770' MSL. Vehicle on road 390' from DER, 157' right of centerline, 15' AGL/695' MSL. Sign 615' from DER, 154' right of centerline, 25' AGL/697' MSL.

BOSCOBEL, WI

BOSCOBEL (OVS)

TAKEOFF MINIMUMS AND (OBSTACLE)

DEPARTURE PROCEDURES

AMDT 1 07298 (FAA)

TAKEOFF MINIMUMS: **Rwy 2**, 600-3 or std. w/ min. climb of 447' per NM to 1300. **Rwy 7**, std. w/ min. climb of 548' per NM to 1500, or 1200-2½ for climb in visual conditions. **Rwy 20**, std. w/ min. climb of 672' per NM to 1400 or 1200-2½ for climb in visual conditions. **Rwy 25**, std. w/ min. climb of 381' per NM to 1300 or 1200-2 ½ for climb in visual conditions.

DEPARTURE PROCEDURE: **Rwy 2**, climb heading 017° to 1300 before turning south. **Rwy 7**, climb heading 067° to 1500 before turning south, or for climb in visual conditions, cross Boscobel Airport at or above 1700 before proceeding on course. **Rwy 20**, climb heading 197° to 1500 before turning east, or for climb in visual conditions, cross Boscobel Airport at or above 1700 before proceeding on course. **Rwy 25**, climb heading 247° to 1500 before proceeding on course, or for climb in visual conditions, cross Boscobel Airport at or above 1700 before proceeding on course.

NOTE: **Rwy 2**, trees 1.3 NM from DER, 2536' left of centerline, 100' AGL/1118' MSL. Trees 1.6 NM from DER, 1276' left of centerline, 100' AGL/1127' MSL. Trees 1750' from DER, 470' left of centerline, 100' AGL/835' MSL. **Rwy 7**, trees 1.2 NM from DER, 2270' right of centerline, 100' AGL/1167' MSL. Trees 1290' from DER, 580' left of centerline, 100' AGL/726' MSL. Tree 13' from DER, 489' left of centerline, 10' AGL/690' MSL. Trees 1988' from DER, 250' left of centerline, 40' AGL/738' MSL. **Rwy 20**, tower 1.7 NM from DER, 640' right of centerline, 205' AGL/1196' MSL. Tower 3070' from DER, 865' left of centerline, 100' AGL/790' MSL. **Rwy 25**, tree 1.6 NM from DER, 2290' right of centerline, 100' AGL/1137' MSL. Tree 2.1 NM from DER, 1110' right of centerline, 100' AGL/1066' MSL. Trees 958' from DER, 478' right of centerline, 40' AGL/737' MSL. Trees 1165' from DER, 701' left of centerline, 40' AGL/731' MSL. Tree 1.6 NM from DER, 2290' right of centerline, 100' AGL/1137' MSL.

BOYCEVILLE, WI

BOYCEVILLE MUNI (3T3)

TAKEOFF MINIMUMS AND (OBSTACLE)

DEPARTURE PROCEDURES

ORIG 02332 (FAA)

TAKEOFF MINIMUMS: **Rwy 8**, 1300-2 or std. with a min. climb of 340' per NM to 2700.

NOTE: **Rwy 8**, tower 6.44NM from DER, 3378' right of centerline, 1200' AGL/2180' MSL.

BURLINGTON, WI

BURLINGTON MUNI (BUU)

TAKEOFF MINIMUMS AND (OBSTACLE)

DEPARTURE PROCEDURES

AMDT 3 13262 (FAA)

TAKEOFF MINIMUMS: **Rwys 1, 19**, NA-Environmental. **Rwy 29**, 300-1 or std. w/min. climb of 325' per NM to 1000.

NOTE: **Rwy 11**, numerous trees beginning 137' from DER, 41' right of centerline, up to 125' AGL/901' MSL. Building 1438' from DER, 415' right of centerline, 50' AGL/825' MSL. Vehicle on road, antenna, and buildings beginning 43' from DER, 3' left of centerline, up to 37' AGL/812' MSL. Numerous trees beginning 227' from DER, 46' left of centerline, up to 72' AGL/847' MSL. **Rwy 29**, numerous trees beginning 11' from DER, 77' left of centerline, up to 161' AGL/938' MSL. Buildings beginning 3568' from DER, 1138' left of centerline, up to 122' AGL/899' MSL. Numerous trees beginning 177' from DER, 144' right of centerline, up to 37' AGL/812' MSL.

CABLE, WI

CABLE UNION (3CU)

TAKEOFF MINIMUMS AND (OBSTACLE)

DEPARTURE PROCEDURES

AMDT 5A 15344 (FAA)

TAKEOFF MINIMUMS: **Rwys 8, 26**, NA - environmental.

Rwy 17, 400-2¾ or std. w/min. climb of 655' per NM to 1900. **Rwy 35**, 300-1½ or std. w/min. climb of 316' per NM to 1600.

DEPARTURE PROCEDURE: **Rwy 17**, climb heading 167° to 1900 before turning right.

NOTE: **Rwy 17**, trees beginning 15' from DER, 228' left of centerline, up to 91' AGL/1421' MSL. Trees beginning 572' from DER, 21' left of centerline, up to 26' AGL/1574' MSL. Vehicle on road, 636' from DER, on centerline, 15' AGL/1388' MSL. Trees, fence, road and terrain beginning 18' from DER, 169' right of centerline, up to 100' AGL/1500' MSL. Trees, terrain and buildings beginning 981' from DER, 9' right of centerline, up to 100' AGL/1720' MSL. **Rwy 35**, trees beginning 40' from DER, 157' left of centerline, up to 91' AGL/1427' MSL. Trees beginning 171' from DER, 48' left of centerline, up to 26' AGL/1368' MSL. Trees beginning 1938' from DER, 14' left of centerline, up to 100' AGL/1502' MSL. Trees beginning 13' from DER, 216' right of centerline, up to 64' AGL/1403' MSL. Trees, pole and buildings beginning 610' from DER, 6' right of centerline, up to 100' AGL/1531' MSL.

27 APR 2017 to 25 MAY 2017

27 APR 2017 to 25 MAY 2017

17117

TAKEOFF MINIMUMS, (OBSTACLE) DEPARTURE PROCEDURES, AND DIVERSE VECTOR AREA (RADAR VECTORS)

TAKEOFF MINIMUMS, (OBSTACLE) DEPARTURE PROCEDURES, AND DIVERSE VECTOR AREA (RADAR VECTORS)

17117

CAHOKIA/ST. LOUIS, IL

ST. LOUIS DOWNTOWN (CPS)
TAKEOFF MINIMUMS AND (OBSTACLE)
DEPARTURE PROCEDURES
AMDT 8 10266 (FAA)

TAKEOFF MINIMUMS: **Rwy 5**, 200-1 ¼ or std. with a min. climb of 343' per NM to 700. **Rwy 30L**, 400-2½ or std. with a min. climb of 220' per NM to 900, alternatively, with standard takeoff minimums and a normal 200' per NM climb gradient, takeoff must occur no later than 2100' prior to DER.

DEPARTURE PROCEDURE: **Rwy 5**, climb on heading 047° to 900 before turning left. **Rwys 12L, 12R**, climb on heading 122° to 1000 before turning left. **Rwy 23**, climb on heading 227° to 2000 before turning. **Rwys 30L, 30R**, climb on heading 302° to 1600 before turning.

NOTE: **Rwy 5**, obstruction light on transmission tower 1649' from DER, 19' left of centerline, 79' AGL/482' MSL. Transmission tower 324' from DER, 79' right of centerline, 78' AGL/487' MSL. **Rwy 12L**, tree 1629' from DER, 144' left of centerline, 45' AGL/453' MSL. **Rwy 12R**, tree 3822' from DER, 20' left of centerline, 94' AGL/509' MSL. Tree 2082' from DER, 927' right of centerline, 69' AGL/486' MSL. **Rwy 23**, multiple trees beginning 815' from DER, 69' left of centerline, up to 56' AGL/470' MSL. Multiple trees beginning 740' from DER, 4' right of centerline, up to 78' AGL/492' MSL. **Rwy 30L**, multiple trees beginning 2510' from DER, 503' left of centerline, up to 107' AGL/521' MSL. Multiple trees beginning 737' from DER, 32' right of centerline, up to 99' AGL/508' MSL.

CAIRO, IL

CAIRO RGNL (CIR)
TAKEOFF MINIMUMS AND (OBSTACLE)
DEPARTURE PROCEDURES
AMDT 1 13178 (FAA)

NOTE: **Rwy 2**, bushes beginning 14' from DER, left and right of centerline, up to 15' AGL/336' MSL. Trees beginning 142' from DER, 293' right of centerline, up to 62' AGL/372' MSL. Poles beginning 298' from DER, 215' right of centerline, up to 43' AGL/343' MSL. Trees beginning 551' from DER, left and right of centerline, up to 100' AGL/424' MSL. **Rwy 14**, light support structure 10' from DER, 56' left of centerline, 1' AGL/321' MSL. Trees beginning 37' from DER, 413' right of centerline, up to 11' AGL/ 321' MSL. Trees beginning 44' from DER, 357' left of centerline, up to 39' AGL/ 353' MSL. Trees beginning 651' from DER, left and right of centerline, up to 105' AGL/ 417' MSL. **Rwy 20**, trees beginning 38' from DER, 84' left of centerline, up to 34' AGL/349' MSL. Tree 39' from DER, 79' right of centerline, up to 8' AGL/323' MSL. Trees beginning 1600' from DER, left and right of centerline, up to 121' AGL/440' MSL. **Rwy 32**, REIL 10' from DER, 91' right of centerline, 1' AGL/ 314' MSL. Sign 11' from DER, 125' left of centerline, 4' AGL/ 316' MSL. Trees beginning 257' from DER, 77' right of centerline, up to 41' AGL/ 354' MSL. Trees beginning 662' from DER, 12' left of centerline, up to 91' AGL/ 403' MSL. Trees beginning 1093' from DER, left and right of centerline, up to 107' AGL/420' MSL.

17117

TAKEOFF MINIMUMS, (OBSTACLE) DEPARTURE PROCEDURES, AND DIVERSE VECTOR AREA (RADAR VECTORS)

CANTON, IL

INGERSOLL (CTK)
TAKEOFF MINIMUMS AND (OBSTACLE)
DEPARTURE PROCEDURES
ORIG 08213 (FAA)

NOTE: **Rwy 9**, tree 1335' from DER, 772' right of centerline, 100' AGL/749' MSL. **Rwy 36**, tree 1162' from DER, 486' right of centerline, 100' AGL/739' MSL.

CARBONDALE/MURPHYSBORO, IL SOUTHERN ILLINOIS (MDH)

TAKEOFF MINIMUMS AND (OBSTACLE)
DEPARTURE PROCEDURES
ORIG 10042 (FAA)

TAKEOFF MINIMUMS: **Rwys 18L, 18R**, std. w/ min. climb of 225' per NM to 1100, or 900-2½ for climb in visual conditions.

DEPARTURE PROCEDURE: **Rwys 18L, 18R**, for climb in visual conditions, cross Southern Illinois airport at or above 1200 MSL before proceeding on course.

NOTE: **Rwy 6**, road 179' from DER, 214' left of centerline, 418' MSL. **Rwy 18L**, tree 3235' from DER, 696' right of centerline, 100' AGL/497' MSL. Antenna 2731' from DER, 458' left of centerline, 100' AGL/483' MSL. Tower 2780' from DER, 484' left of centerline, 100' AGL/483' MSL. Pole 1166' from DER, 192' right of centerline, 100' AGL/439' MSL. **Rwy 24**, trees beginning 633' from DER left and right of centerline up to 100' AGL/485' MSL. **Rwy 36L**, trees beginning 480' from DER left and right of centerline up to 100' AGL/479' MSL.

CARMIL, IL

CARMIL MUNI (CUL)
TAKEOFF MINIMUMS AND (OBSTACLE)
DEPARTURE PROCEDURES
AMDT 2 11293 (FAA)

NOTE: **Rwy 18**, tree 4288' from DER, 930' right of centerline, 100' AGL/499' MSL. **Rwy 36**, tree 3078' from DER, 41' left of centerline, 100' AGL/499' MSL.

CASEY, IL

CASEY MUNI (1H8)
TAKEOFF MINIMUMS AND (OBSTACLE)
DEPARTURE PROCEDURES
AMDT 4 10210 (FAA)

TAKEOFF MINIMUMS: **Rwys 18, 36**, NA-Environmental. NOTE: **Rwy 4**, tank 4010' from DER, 1464' right of centerline, 140' AGL/785' MSL. Vehicle on road 651' from DER, 539' right of centerline, 15' AGL/671' MSL. Trees 998' from DER, 463' right of centerline, 100' AGL/756' MSL. **Rwy 22**, vehicle on road 255' from DER, 399' left of centerline, 15' AGL/671' MSL. Trees 2297' from DER, 766' right of centerline, 100' AGL/756' MSL.

27 APR 2017 to 25 MAY 2017

27 APR 2017 to 25 MAY 2017

TAKEOFF MINIMUMS, (OBSTACLE) DEPARTURE PROCEDURES, AND
DIVERSE VECTOR AREA (RADAR VECTORS)

17117

CENTRALIA, IL**CENTRALIA MUNI (ENL)**

**TAKEOFF MINIMUMS AND (OBSTACLE)
 DEPARTURE PROCEDURES**
 AMDT 2 12152 (FAA)

NOTE: **Rwy 9**, trees beginning 208' from DER, 494' right of centerline, up to 100' AGL/624' MSL. Trees beginning 528' from DER, 653' left of centerline, up to 100' AGL/624' MSL. **Rwy 18**, trees beginning 60' from DER, 265' left of centerline, up to 100' AGL/562' MSL. Trees beginning 77' from DER, 207' right of centerline, up to 100' AGL/603' MSL. Silo 1115' from DER, 755' right of centerline, 73' AGL/608' MSL. **Rwy 27**, trees beginning 1169' from DER, 493' left of centerline, up to 100' AGL/624' MSL. Trees beginning 1793' from DER, 377' right of centerline, up to 100' AGL/619' MSL. **Rwy 36**, trees and poles beginning 37' from DER, 5' right of centerline, up to 100' AGL/604' MSL. Trees, poles, and buildings beginning 203' from DER, 363' left of centerline, up to 100' AGL/610' MSL.

CHAMPAIGN/URBANA, IL**UNIVERSITY OF ILLINOIS-WILLARD (CMI)**

**TAKEOFF MINIMUMS AND (OBSTACLE)
 DEPARTURE PROCEDURES**
 AMDT 1 16259 (FAA)

DEPARTURE PROCEDURE: **Rwy 4**, climb heading 044° to 1300 before turning left.

NOTE: **Rwy 4**, trees beginning 928' from DER, 554' right of centerline, up to 785' MSL. Trees beginning 1217' from DER, 339' right of centerline, up to 792' MSL. Tree 1339' from DER, 474' right of centerline, 798' MSL. Trees beginning 1343' from DER, 166' right of centerline, up to 802' MSL. Tree 1695' from DER, 535' right of centerline, 803' MSL. Trees beginning 1699' from DER, 233' right of centerline, up to 804' MSL. Tree 1728' from DER, 115' left of centerline, 789' MSL. Tree 2249' from DER, 441' left of centerline, 808' MSL. Trees beginning 2352' from DER, 411' right of centerline, up to 811' MSL. Tree 3096' from DER, 121' right of centerline, 826' MSL. Tree 3502' from DER, 391' right of centerline, 837' MSL. Tree 3705' from DER, 380' right of centerline, 843' MSL. **Rwy 14R**, rod on ol and pole beginning 527' from DER, 388' left of centerline, up to 759' MSL. Tower and rod on ol gs beginning 543' from DER, 437' left of centerline, up to 37' AGL/780' MSL. **Rwy 32L**, tower and asr beginning 1914' from DER, 346' left of centerline, up to 79' AGL/832' MSL. **Rwy 32R**, pole and rod on ol pole beginning 844' from DER, 713' right of centerline, up to 33' AGL/783' MSL.

CHETEK, WI**CHETEK MUNI-SOUTHWORTH (Y23)**

**TAKEOFF MINIMUMS AND (OBSTACLE)
 DEPARTURE PROCEDURES**
 ORIG-A 14065 (FAA)

NOTE: **Rwy 17**, trees beginning 44' from DER, 13' left of centerline, up to 100' AGL/1120' MSL. Vehicle on road 355' from DER, across centerline, 15' AGL/1070' MSL. Multiple poles beginning 338' from DER, 278' left of centerline, up to 29' AGL/1079' MSL. AG equipment beginning 27' from DER, 451' right of centerline, 19' AGL/1073' MSL. Pole 294' from DER, 299' right of centerline, 16' AGL/1070' MSL. Trees beginning 343' from DER, 7' right of centerline, up to 100' AGL/1137' MSL. **Rwy 35**, beacon 79' from DER, 448' left of centerline, 48' AGL/1103' MSL. Multiple buildings beginning 154' from DER, 339' left of centerline, up to 28' AGL/1082' MSL. Multiple poles beginning 881' from DER, 135' left of centerline, up to 34' AGL/1088' MSL. Multiple antennas beginning 1141' from DER, 40' left of centerline, up to 58' AGL/1107' MSL. Trees beginning 324' from DER, 4' left of centerline, up to 100' AGL/1146' MSL. Fence 80' from DER, 145' right of centerline, 6' AGL/1061' MSL. Multiple buildings beginning 144' from DER, 102' right of centerline, up to 22' AGL/1081' MSL. Multiple poles beginning 452' from DER, 14' right of centerline, up to 75' AGL/1088' MSL. Trees beginning 64' from DER, 1' right of centerline, up to 100' AGL/1141' MSL.

27 APR 2017 to 25 MAY 2017

27 APR 2017 to 25 MAY 2017

17117

TAKEOFF MINIMUMS, (OBSTACLE) DEPARTURE PROCEDURES, AND
DIVERSE VECTOR AREA (RADAR VECTORS)

TAKEOFF MINIMUMS, (OBSTACLE) DEPARTURE PROCEDURES, AND
DIVERSE VECTOR AREA (RADAR VECTORS)

17117

CHICAGO, IL**CHICAGO MIDWAY INTL (MDW)****TAKEOFF MINIMUMS AND (OBSTACLE)
DEPARTURE PROCEDURES**

AMDT 11 14205 (FAA)

DEPARTURE PROCEDURE: **Rwys 4L, 4R**, Climbing right turn to 2400 heading 100° before proceeding on course. **Rwys 13C, 13L, 13R**, Climb heading 138° to 1400 before turning. **Rwys 22L, 22R**, Climb heading 227° to 1400 before turning. **Rwys 31C, 31L, 31R**, Climb heading 318° to 1400 before turning.

NOTE: **Rwy 4L**, fence 18' from DER, 257' left of centerline, 12' AGL/616' MSL. Vehicle on road 143' from DER, 163' left of centerline, 16' AGL/620' MSL. Poles and building beginning 167' from DER, 64' left of centerline, 25' AGL/630' MSL. Rising terrain 10' from DER, 492' right of centerline, 606' MSL. Signs beginning 1596' from DER, left and right of centerline, up to 88' AGL/692' MSL. Light poles, trees, towers and pole beginning 281' from DER, left and right of centerline, up to 75' AGL/679' MSL. **Rwy 4R**, navaid 300' from DER, on centerline, 9' AGL/614' MSL. Blast fence 278' from DER, 44' left of centerline, 9' AGL/613' MSL. Tower 3984' from DER, 1142' left of centerline, 109' AGL/708' MSL. Tramway 1491' from DER, 571' right of centerline, 48' AGL/654' MSL. Fence and wall beginning 249' from DER, left and right of centerline, up to 13' AGL/616' MSL. Light poles, transmission line towers and poles beginning 40' from DER, left and right of centerline, up to 39' AGL/644' MSL. Trees and sign beginning 905' from DER, 416' left of centerline, up to 75' AGL/679' MSL. Trees and flagpole beginning 921' from DER, 67' right of centerline, up to 53' AGL/657' MSL. Tower 1823' from DER, 110' right of centerline, 61' AGL/672' MSL. **Rwy 13C**, navaid 249' from DER, on centerline, 9' AGL/619' MSL. Building and trees beginning 37' from DER, 470' right of centerline, up to 27' AGL/641' MSL. Building and blast fence beginning 102' from DER, 51' left of centerline, up to 15' AGL/625' MSL. Light poles, sign and transmission line towers beginning 179' from DER, left and right of centerline, up to 39' AGL/650' MSL. Buildings and trees beginning 271' from DER, 569' left of centerline, up to 70' AGL/680' MSL. Buildings beginning 565' from DER, left and right of centerline, up to 42' AGL/654' MSL. Trees beginning 823' from DER, left and right of centerline, up to 81' AGL/700' MSL. **Rwy 13L**, buildings beginning 665' from DER, left and right of centerline, up to 33' AGL/641' MSL. Fence and wall beginning 178' from DER, 462' left of centerline, up to 15' AGL/622' MSL. Light poles, trees and transmission line towers beginning 362' from DER, left and right of centerline, up to 75' AGL/684' MSL. **Rwy 13R**, wind sock 263' from DER, 256' left of centerline, 11' AGL/621' MSL. Building 80' from DER, 334' right of centerline, 23' AGL/636' MSL. Buildings beginning 459' from DER, 291' right of centerline, up to 50' AGL/663' MSL. Light poles, trees and transmission line towers beginning 978' from DER, 52' right of centerline, up to 53' AGL/692' MSL.

CHICAGO, IL (CON'T)**CHICAGO MIDWAY INTL (CON'T)**

NOTE: **Rwy 22L**, building and light poles beginning 73' from DER, 489' left of centerline, up to 31' AGL/648' MSL. Buildings, light poles, trees and transmission line towers beginning 211' from DER, left and right of centerline, up to 60' AGL/689' MSL. Tank 4100' from DER, 161' right of centerline, 113' AGL/728' MSL. Poles beginning 3991' from DER, 571' left of centerline, up to 107' AGL/743' MSL. **Rwy 22R**, tank 4332' from DER, 763' left of centerline, 113' AGL/728' MSL. Fence and wall beginning 8' from DER, left and right of centerline, up to 13' AGL/630' MSL. Building 946' from DER, 568' left of centerline, 62' AGL/677' MSL. Building, light poles, trees and transmission line towers beginning 84' from DER, left and right of centerline, up to 43' AGL/659' MSL. Trees beginning 1' from DER, 306' right of centerline, up to 52' AGL/669' MSL. Trees beginning 493' from DER, 30' right of centerline, up to 75' AGL/689' MSL. **Rwy 31C**, navaid 238' from DER, on centerline, 12' AGL/617' MSL. Navaid 182' from DER, 309' right of centerline, 19' AGL/624' MSL. Tank and water tower beginning 5575' from DER, 1418' right of centerline, 162' AGL/757' MSL. Spire 2213' from DER, 711' left of centerline, 77' AGL/682' MSL. Trees beginning 82' from DER, 107' left of centerline, up to 45' AGL/658' MSL. Trees, poles and building beginning 450' from DER, 37' left of centerline, up to 75' AGL/670' MSL. Trees and transmission line towers beginning 83' from DER, 449' left of centerline, up to 66' AGL/670' MSL. Poles, trees and buildings beginning 141' from DER, 20' right of centerline, up to 39' AGL/647' MSL. Poles and trees beginning 1116' from DER, 12' right of centerline, up to 75' AGL/673' MSL. **Rwy 31L**, rising terrain 15' from DER, 502' right of centerline, 608' MSL. Signs beginning 68' from DER, left and right of centerline, up to 5' AGL/611' MSL. Buildings beginning 338' from DER, 451' left of centerline, up to 53' AGL/661' MSL. Trees and light poles beginning 958' from DER, 36' left of centerline, up to 65' AGL/674' MSL. Trees beginning 1411' from DER, 7' right of centerline, up to 63' AGL/667' MSL. **Rwy 31R**, navaid 614' from DER, 474' left of centerline, 19' AGL/624' MSL. Sign 494' from DER, 190' left of centerline, 23' AGL/638' MSL. Trees, poles and building beginning 16' from DER, 90' right of centerline, up to 34' AGL/638' MSL. Trees, poles and buildings beginning 208' from DER, 18' right of centerline, up to 63' AGL/667' MSL. Trees, poles and buildings beginning 256' from DER, 6' left of centerline, up to 33' AGL/650' MSL. Trees, poles and buildings beginning 574' from DER, 3' left of centerline, up to 60' AGL/664' MSL.

27 APR 2017 to 25 MAY 2017

27 APR 2017 to 25 MAY 2017

17117

TAKEOFF MINIMUMS, (OBSTACLE) DEPARTURE PROCEDURES, AND
DIVERSE VECTOR AREA (RADAR VECTORS)

TAKEOFF MINIMUMS, (OBSTACLE) DEPARTURE PROCEDURES, AND DIVERSE VECTOR AREA (RADAR VECTORS)

17117

CHICAGO, IL (CON'T)

CHICAGO-O'HARE INTL (ORD)

TAKEOFF MINIMUMS AND (OBSTACLE) DEPARTURE PROCEDURES

AMDT 20A 16259 (FAA)

TAKEOFF MINIMUMS: **Rwy 27L**, std. w/min. climb of 220' per NM to 900, or alternatively, with standard takeoff minimums and a normal 200' per NM climb gradient, takeoff must occur no later than 1400' prior to DER. **Rwy 27R**, std. w/min. climb of 220' per NM to 1800. **Rwy 28C**, std. w/min. climb of 220' per NM to 1700. **Rwy 28L**, std. w/min. climb of 235' per NM to 1000, or alternatively, with standard takeoff minimums and a normal 200' per NM climb gradient, takeoff must occur no later than 1900' prior to DER. **Rwy 28R**, std. w/min. climb of 220' per NM to 1700. **Rwy 33**, std. w/min. climb of 240' per NM to 1700.

NOTE: **Rwy 4L**, tower on building 3301' from DER, 1207' right of centerline, 109' AGL/750' MSL. **Rwy 4R**, taxiing aircraft 152' from DER, 328' left of centerline, up to 80' AGL/735' MSL. Trees 809' from DER, 611' right of centerline, up to 36' AGL/675' MSL. **Rwy 9L**, building 2771' from DER, 1233' right of centerline, 94' AGL/745' MSL. **Rwy 9R**, pole 876' from DER, 688' right of centerline, 29' AGL/673' MSL. **Rwy 10C**, glideslope antenna 1170' from DER, 777' left of centerline, 41' AGL/694' MSL. **Rwy 10L**, taxiing aircraft 32' from DER, 440' left of centerline, up to 80' AGL/735' MSL. Sign and tower on building beginning 2517' from DER, 731' right of centerline, up to 88' AGL/732' MSL. Tower 3957' from DER, 1289' right of centerline, 127' AGL/771' MSL. **Rwy 10R**, fences beginning 10' from DER, 44' right of centerline, up to 12' AGL/665' MSL. Bush, fences, and poles beginning 34' from DER, 195' left of centerline, up to 26' AGL/686' MSL. Trees beginning 2202' from DER, 587' right of centerline, up to 71' AGL/724' MSL. Tower 4381' from DER, 1537' right of centerline, 138' AGL/738' MSL. **Rwy 15**, taxiing aircraft 1105' from DER, 766' right of centerline, up to 80' AGL/736' MSL. **Rwy 22R**, taxiing aircraft 34' from DER, 429' left of centerline, up to 80' AGL/736' MSL. **Rwy 27L**, taxiing aircraft 70' from DER, 407' left of centerline, up to 80' AGL/740' MSL. Pole 5553' from DER, 1833' left of centerline, 143' AGL/805' MSL. **Rwy 27R**, obstruction light on tank 1509' from DER, 887' left of centerline, 56' AGL/726' MSL. Elevator 2778' from DER, 1021' left of centerline, 111' AGL/776' MSL. **Rwy 28C**, trees beginning 2373' from DER, 696' left of centerline, up to 89' AGL/768' MSL. Trees 2559' from DER, 256' right of centerline, up to 58' AGL/737' MSL. **Rwy 28L**, terrain and bush beginning 5' from DER, 352' right of centerline, up to 4' AGL/692' MSL. Poles beginning 244' from DER, 471' right of centerline, up to 38' AGL/707' MSL. Railroad beginning 590' from DER, 639' left of centerline, up to 23' AGL/700' MSL. Poles and trees beginning 1500' from DER, 721' left of centerline, up to 79' AGL/758' MSL. **Rwy 33**, pole 1993' from DER, 790' left of centerline, 45' AGL/716' MSL.

CHICAGO, IL (CON'T)

LANSING MUNI (IGQ)

TAKEOFF MINIMUMS AND (OBSTACLE) DEPARTURE PROCEDURES

AMDT 5 09183 (FAA)

TAKEOFF MINIMUMS: **Rwy 36**, 300-1¼ or std. w/min. climb of 322' per NM to 900.
DEPARTURE PROCEDURE: **Rwy 36**, climb heading 002° to 1200 before proceeding on course.
NOTE: **Rwy 9**, poles beginning 1203' from DER, from left to right of centerline, up to 32' AGL/647' MSL. Building 1882' from DER, 964' left of centerline, 50' AGL/668' MSL. Tower 4314' from DER, 664' left of centerline, 149' AGL/764' MSL. **Rwy 18**, trees beginning 381' from DER, 440' right of centerline, up to 42' AGL/661' MSL. **Rwy 27**, hangar and building beginning 254' from DER, 69' right of centerline, up to 26' AGL/641' MSL. Trees, antennas, antennas on buildings, signs, light poles, and road with vehicles beginning 326' from DER, from left to right of centerline, up to 68' AGL/683' MSL. Tank 575' from DER, 65' left of centerline, 16' AGL/630' MSL. **Rwy 36**, pole 5546' from DER, 1932' right of centerline, 164' AGL/777' MSL.

CHICAGO/AURORA, IL

AURORA MUNI (ARR)

TAKEOFF MINIMUMS AND (OBSTACLE) DEPARTURE PROCEDURES

AMDT 1 07298 (FAA)

NOTE: **Rwy 9**, vehicle on road 794' from DER, right and left of centerline, 15' AGL/734' MSL. Multiple trees beginning 4126' from DER, on centerline, 100' AGL/819' MSL. **Rwy 15**, multiple trees, power poles and road beginning 900' from DER, 47' right of centerline, up to 100' AGL/809' MSL. Power pole 1313' from DER, 47' left of centerline, 34' AGL/733' MSL. **Rwy 18**, multiple power poles beginning 1218' from DER, 190' right of centerline, up to 35' AGL/734' MSL. Multiple trees beginning 3646' from DER, on centerline up to 100' AGL/809' MSL. **Rwy 27**, vehicle on road 1020' from DER, right and left of centerline, 15' AGL/734' MSL. **Rwy 33**, multiple trees and road beginning 788' from DER, 238' right of centerline, up to 79' AGL/788' MSL. Road and power pole beginning 577' from DER, 137' left of centerline, up to 38' AGL/747' MSL. **Rwy 36**, tree, pole and fence beginning 31' from DER, 169' left of centerline, up to 35' AGL/734' MSL. Vehicle on road beginning 1099' from DER, right and left of centerline, 15' AGL/734' MSL.

CHICAGO/LAKE IN THE HILLS, IL

LAKE IN THE HILLS (3CK)

TAKEOFF MINIMUMS AND (OBSTACLE) DEPARTURE PROCEDURES

ORIG-A 12096 (FAA)

NOTE: **Rwy 8**, road beginning 118' from DER, left/right and on centerline, 15' AGL/901' MSL. Multiple trees beginning 2174' from DER, 294' left of centerline, up to 100' AGL/986' MSL. Multiple trees beginning 3312' from DER, 1023' right of centerline, up to 100' AGL/994' MSL. **Rwy 26**, multiple trees beginning 55' from DER, 288' right of centerline, up to 100' AGL/999' MSL. Multiple trees beginning 299' from DER, 101' left of centerline, up to 100' AGL/959' MSL. Power lines beginning 1714' from DER, 12' right of centerline, up to 36' AGL/937' MSL. Power lines beginning 1879' from DER, 87' left of centerline, up to 52' AGL/952' MSL.

17117

TAKEOFF MINIMUMS, (OBSTACLE) DEPARTURE PROCEDURES, AND DIVERSE VECTOR AREA (RADAR VECTORS)

**TAKEOFF MINIMUMS, (OBSTACLE) DEPARTURE PROCEDURES, AND
DIVERSE VECTOR AREA (RADAR VECTORS)**

17117

**CHICAGO/PROSPECT HEIGHTS/
WHEELING, IL**

**CHICAGO EXECUTIVE (PWK)
TAKEOFF MINIMUMS AND (OBSTACLE)
DEPARTURE PROCEDURES
AMDT 3 11125 (FAA)**

TAKEOFF MINIMUMS: Rwy 12, 300-1½ or std. w/min. climb of 230' per NM to 900. Or alternatively, with standard takeoff minimums and a normal 200' per NM climb gradient, takeoff must occur no later than 1700' prior to DER. **Rwy 30**, 300-1 or std. w/min. climb of 250' per NM to 900, or alternatively, with standard takeoff minimums and a normal 200' per NM climb gradient, takeoff must occur no later than 2000' prior to DER.

NOTE: Rwy 6, trees beginning 10' from DER, left and right of centerline, up to 100' AGL/764' MSL. Vehicles on road beginning 102' from DER, left and right of centerline, up to 17' AGL/661' MSL. **Rwy 12**, vehicles on roads beginning 6' from DER, left and right of centerline, up to 17' AGL/661' MSL. Trees beginning 34' from DER, left and right of centerline, up to 100' AGL/764' MSL. Multiple antennas, buildings and poles beginning 164' from DER, right and left of centerline, up to 174' AGL/834' MSL. **Rwy 16**, multiple antennas, buildings, and poles beginning 91' from DER, left and right of centerline, up to 30' AGL/675' MSL. Vehicles on road beginning 288' from DER, left and right of centerline, up to 17' AGL/658' MSL. Trees beginning 442' from DER, left and right of centerline, up to 68' AGL/712' MSL. **Rwy 24**, vehicles on roads beginning 1' from DER, left and right of centerline, up to 17' AGL/666' MSL. Multiple buildings, poles and tower beginning 63' from DER, left and right of centerline, up to 130' AGL/783' MSL. Trees beginning 842' from DER, left and right of centerline, up to 48' AGL/693' MSL. **Rwy 30**, vehicles on road beginning 4' from DER, left and right of centerline, up to 17' AGL/666' MSL. Fence 63' from DER, 24' right of centerline, 12' AGL/652' MSL. Multiple buildings, poles and transmission towers beginning 70' from DER, left and right of centerline, up to 128' AGL/778' MSL. Trees beginning 77' from DER, left and right of centerline, up to 100' AGL/759' MSL. Antenna 5087' from DER, 759' right of centerline, 152' AGL/802' MSL. **Rwy 34**, trees beginning 116' from DER, left and right of centerline, up to 85' AGL/725' MSL. Building 718' from DER, 541' right of centerline, 53' AGL/693' MSL.

**CHICAGO/ROCKFORD, IL
CHICAGO/ROCKFORD INTL (RFD)
TAKEOFF MINIMUMS AND (OBSTACLE)
DEPARTURE PROCEDURES
ORIG 11041 (FAA)**

TAKEOFF MINIMUMS: Rwy 7, 300-1½ or std. w/min. climb of 210' per NM to 1000, or alternatively, with standard takeoff minimums and a normal 200' per NM climb gradient. Takeoff must occur no later than 1300' prior to DER. **Rwy 25**, 300-1 or std. w/min. climb of 270' per NM to 1000.

NOTE: Rwy 1, vehicles on roadway 569' from DER, 640' left of centerline, up to 15' AGL/754' MSL. Tree 1572' from DER, 658' left of centerline, 100' AGL/ 778' MSL. **Rwy 7**, vehicles on roadway 485' from DER, 600' right of centerline, up to 15' AGL/754' MSL. Rod on building 628' from DER, 275' right of centerline 13' AGL/752' MSL. Poles beginning 544' from DER, 596' right of centerline, up to 32' AGL/771' MSL. Trees beginning 1084' from DER, 244' right of centerline, up to 100' AGL/804' MSL. Trees beginning 1603' from DER, 254' left of centerline, up to 100' AGL/ 779' MSL. Trees beginning 4745' from DER, 593' right of centerline, up to 100' AGL/859' MSL. Trees beginning 5167' from DER, 630' left of centerline, up to 100' AGL/879' MSL. Obstruction light on antenna 5379' from DER, 1768' left of centerline, 129' AGL/888' MSL. Tower 5359' from DER, 1785' left of centerline, 140' AGL/888' MSL. **Rwy 19**, vehicles on roadway 447' from DER, 593' left of centerline, up to 15' AGL/724' MSL. Trees beginning 2202' from DER, 996' right of centerline, up to 100' AGL/796' MSL. **Rwy 25**, vehicles on roadway 2' from DER, left and right of centerline, up to 15' AGL/744' MSL. Trees beginning 4660' from DER, 1237' left of centerline, up to 100' AGL/ 909' MSL.

**CHICAGO/ROMEOVILLE, IL
LEWIS UNIVERSITY (LOT)
TAKEOFF MINIMUMS AND (OBSTACLE)
DEPARTURE PROCEDURES
AMDT 1 10154 (FAA)**

TAKEOFF MINIMUMS: Rwy 2, 300-1¼ or std. w/min. climb of 420' per NM to 1200.
DEPARTURE PROCEDURE: Rwy 2, climb heading 016° to 1300 before turning right.

NOTE: Rwy 2, multiple towers, tree, and stack beginning 1196' from DER, 49' left of centerline, up to 213' AGL/876' MSL. **Rwy 9**, multiple trees and building beginning 243' from DER, 358' left of centerline, up to 64' AGL/735' MSL. Multiple light poles, trees, and sign beginning 112' from DER, 174' right of centerline, up to 77' AGL/721' MSL. **Rwy 27**, multiple trees beginning 1143' from DER, 634' right of centerline, up to 70' AGL/723' MSL.

27 APR 2017 to 25 MAY 2017

27 APR 2017 to 25 MAY 2017

17117

**TAKEOFF MINIMUMS, (OBSTACLE) DEPARTURE PROCEDURES, AND
DIVERSE VECTOR AREA (RADAR VECTORS)**

TAKEOFF MINIMUMS, (OBSTACLE) DEPARTURE PROCEDURES, AND DIVERSE VECTOR AREA (RADAR VECTORS)

17117

CHICAGO/WAUKEGAN, IL

WAUKEGAN RGNL (UGN)

TAKEOFF MINIMUMS AND (OBSTACLE)
DEPARTURE PROCEDURES

AMDT 1 13010 (FAA)

NOTE: **Rwy 5**, trees beginning 328' from DER, 493' left of centerline, up to 58' AGL/759' MSL. **Rwy 14**, hangar 196' from DER, 453' left of centerline, 30' AGL/749' MSL. Bush 362' from DER, 130' left of centerline, 17' AGL/728' MSL. Bush 371' from DER, 161' right of centerline, 14' AGL/725' MSL. Hangar 920' from DER, 452' right of centerline, 30' AGL/749' MSL. **Rwy 23**, trees beginning 89' from DER, 344' right of centerline, up to 59' AGL/780' MSL. Trees beginning 212' from DER, 372' left of centerline, up to 44' AGL/758' MSL. Trees beginning 925' from DER, left and right of centerline, up to 73' AGL/797' MSL. **Rwy 32**, terrain beginning 7' from DER, 112' left of centerline, up to 738' MSL. Terrain 122' from DER, 249' right of centerline, 734' MSL. Vehicle on road 232' from DER, 124' right of centerline, up to 15' AGL/752' MSL. Trees, bush, and wind vane on building beginning 246' from DER, left and right of centerline, up to 54' AGL/784' MSL. Tree 1560' from DER, 259' right of centerline, 70' AGL/801' MSL.

CHICAGO/WEST CHICAGO, IL (CON'T)

DUPAGE (DPA)

TAKEOFF MINIMUMS AND (OBSTACLE)
DEPARTURE PROCEDURES

AMDT 1A 13066 (FAA)

NOTE: **Rwy 28**, multiple trees beginning 1228' from DER, 683' left and right of centerline, up to 84' AGL/837' MSL. Sign 39' from DER, 455' right of centerline, 3' AGL/756' MSL. **Rwy 33**, REIL lights beginning 51' from DER, 95' left and right of centerline, up to 2' AGL/760' MSL. Multiple poles beginning 407' from DER, 154' left and right of centerline, up to 61' AGL/817' MSL. Obstruction light on poles beginning 532' from DER, 120' left and right of centerline, up to 39' AGL/796' MSL. Vehicle on road beginning 460' from DER, 439' right of centerline, up to 15' AGL/772' MSL. Multiple trees beginning 335' from DER, 11' left and right of centerline, up to 110' AGL/859' MSL. Fence 346' from DER, 575' left of centerline, 48' AGL/800' MSL. Buildings beginning 195' from DER, 425' right of centerline, up to 21' AGL/778' MSL.

CLINTONVILLE, WI

CLINTONVILLE MUNI (CLI)

TAKEOFF MINIMUMS AND (OBSTACLE)
DEPARTURE PROCEDURES

AMDT 1 07074 (FAA)

NOTE: **Rwys 9, 27**, NA-environmental. **Rwy 4**, trees beginning 382' from DER, 485' right of centerline, up to 100' AGL/914' MSL, elevator 1199' from DER, 300' right of centerline, up to 100' AGL/930' MSL. **Rwy 18**, trees beginning 379' from DER, 424' right of centerline, up to 100' AGL/909' MSL. **Rwy 22**, trees beginning 729' from DER, 471' right of centerline, up to 100' AGL/929' MSL. **Rwy 32**, trees beginning 1215' from DER, 426' left of centerline, up to 100' AGL/934' MSL.

CRANDON, WI

CRANDON/STEVE CONWAY MUNI (Y55)

TAKEOFF MINIMUMS AND (OBSTACLE)
DEPARTURE PROCEDURES

ORIG 15008 (FAA)

NOTE: **Rwys 1, 19**, NA – Environmental. **Rwy 30**, 300-2 or std. w/min. climb of 218' per NM to 2100, or alternatively with standard takeoff minimums and a normal 200' per NM climb gradient, takeoff must occur no later than 1800' prior to DER.

NOTE: **Rwy 12**, tree 21' from DER, 315' left of centerline, 3' AGL/1630' MSL. Obstruction light wind sock 89' from DER, 222' left of centerline, 20' AGL/1649' MSL. Vehicle on roadway 302' from DER, 258' left to right of centerline, 15' AGL/1644' MSL. Buildings 438' from DER, 386' right of centerline, up to 19' AGL/1648' MSL. Apbn 474' from DER, 492 right of centerline, 39' AGL/1668' MSL. Tree 475' from DER, 437' left of centerline, 17' AGL/1646' MSL. Pole 678' from DER, 629' right of centerline, 21' AGL/1650' MSL. Trees beginning from 831' from DER, 222' right of centerline, up to 66' AGL/1685' MSL. **Rwy 30**, trees beginning 3' from DER, 199' right of centerline, up to 10' AGL/1659' MSL. Trees beginning 105' from DER, 236' right of centerline, up to 11' AGL/1661' MSL. Trees beginning 1096' from DER, 42' left of centerline, up to 50' AGL/1679' MSL. Trees beginning 1126' from DER, 181' left to right of centerline, up to 78' AGL/1707' MSL. Trees beginning 3974' from DER, 166' right of centerline, up to 86' AGL/1795' MSL. Trees beginning 5974' from DER, 1892' right of centerline, up to 100' AGL/1939' MSL.

CHICAGO/WEST CHICAGO, IL

DUPAGE (DPA)

TAKEOFF MINIMUMS AND (OBSTACLE)
DEPARTURE PROCEDURES

AMDT 1A 13066 (FAA)

NOTE: **Rwy 2L**, airfield light 9' from DER, 61' left of centerline, 1' AGL/756' MSL. Poles beginning 1075' from DER, 622' left of centerline, up to 44' AGL/799' MSL. Trees beginning 1252' from DER, 368' left of centerline, up to 104' AGL/856' MSL. Fence 1672' from DER, 807' left of centerline, 42' AGL/800' MSL. **Rwy 10**, REIL lights beginning 39' from DER, 77' left and right of centerline, up to 3' AGL/757' MSL. Buildings beginning 630' from DER, 134' left and right of centerline, up to 45' AGL/801' MSL. Antennae beginning 699' from DER, 632' left of centerline, up to 36' AGL/792' MSL. Multiple trees beginning 845' from DER, 1' left and right of centerline, up to 93' AGL/849' MSL. Stack 1638' from DER, 185' left of centerline, 54' AGL/810' MSL. **Rwy 15**, fence 62' from DER, 385' left of centerline, 5' AGL/763' MSL. Multiple trees beginning 3' from DER, 9' left and right of centerline, up to 95' AGL/850' MSL. Vehicle on road beginning 89' from DER, 9' left and right of centerline, up to 15' AGL/773' MSL. Buildings beginning 417' from DER, 481' right of centerline, up to 37' AGL/795' MSL. Poles beginning 804' from DER, 235' right of centerline, up to 36' AGL/794' MSL. Antenna 1.09 NM from DER, 1676' left of centerline, 169' AGL/927' MSL. **Rwy 20L**, fence 209' from DER, 547' left of centerline, 7' AGL/757' MSL. Multiple trees beginning 407' from DER, 392' left of centerline, up to 111' AGL/847' MSL. Sign 22' from DER, 351' right of centerline, 2' AGL/752' MSL. **Rwy 20R**, tree 645' from DER, 619' right of centerline, 17' AGL/768' MSL. Building 974' from DER, 681' right of centerline, 28' AGL/781' MSL.

17117

TAKEOFF MINIMUMS, (OBSTACLE) DEPARTURE PROCEDURES, AND DIVERSE VECTOR AREA (RADAR VECTORS)

TAKEOFF MINIMUMS, (OBSTACLE) DEPARTURE PROCEDURES, AND DIVERSE VECTOR AREA (RADAR VECTORS)

17117

CUMBERLAND WI

CUMBERLAND MUNI (UBE)

TAKEOFF MINIMUMS AND (OBSTACLE)
DEPARTURE PROCEDURES

ORIG 16091 (FAA)

TAKEOFF MINIMUMS: **Rwy 18, 36**, NA-Environmental.

NOTE: **Rwy 9**, REIL 35' from DER, 107' right of centerline, 3' AGL/1235' MSL. REIL 35' from DER, 107' left of centerline, 4' AGL/1235' MSL. Pole 662' from DER, 456' left of centerline, 29' AGL/1260' MSL. Trees beginning 802' from DER, 573' left of centerline, up to 1292' MSL. Tree 1618' from DER, 269' right of centerline, 1283' MSL. Trees beginning 1946' from DER, 64' right of centerline, up to 1298' MSL. Trees beginning 1947' from DER, 66' left of centerline, up to 1294' MSL. Trees beginning 1954' from DER, 288' left of centerline, up to 1296' MSL. Tree 2312' from DER, 1100' left of centerline, 1307' MSL. **Rwy 27**: pole 10' from DER, 15' right of centerline, 2' AGL/1244' MSL. Fence 54' from DER, 386' right of centerline, 4' AGL/1246' MSL. Vehicles on road beginning 634' from DER, left and right of centerline, up to 15' AGL/1262' MSL. Building 852' from DER, 425' left of centerline, 29' AGL/1271' MSL. Tree 3356' from DER, 394' right of centerline, 1330' MSL.

DANVILLE, IL

VERMILION RGNL (DNV)

TAKEOFF MINIMUMS AND (OBSTACLE)
DEPARTURE PROCEDURES

ORIG 09183 (FAA)

NOTE: **Rwy 3**, tree 2298' from DER, 725' right of centerline, 50' AGL/761' MSL. **Rwy 16**, tree 4101' from DER, 378' left of centerline, 50' AGL/789' MSL. **Rwy 21**, tree 1982' from DER, 802' left of centerline, 50' AGL/728' MSL. **Rwy 34**, tree 3460' from DER, 2' right of centerline, 50' AGL/812' MSL.

DE KALB, IL

DE KALB TAYLOR MUNI (DKB)

TAKEOFF MINIMUMS AND (OBSTACLE)
DEPARTURE PROCEDURES

AMDT 4A 15120 (FAA)

TAKEOFF MINIMUMS: **Rwy 27**, 300-1.

DEPARTURE PROCEDURE: **Rwy 9**, climb runway heading to 1400 before proceeding on course.

NOTE: **Rwy 9**, antenna tower 4363' from DER, 760' right of centerline, 130' AGL/1024' MSL.

DECATUR, IL

DECATUR (DEC)

TAKEOFF MINIMUMS AND (OBSTACLE)
DEPARTURE PROCEDURES

AMDT 3 10266 (FAA)

DEPARTURE PROCEDURE: **Rwy 6**, climb heading 060° to 1700 before turning left. **Rwy 30**, climb heading 300° to 1400 before turning right. **Rwy 36**, climbing left turn to intercept AXC VORTAC R-340 to 2000 before proceeding on course.

NOTE: **Rwy 24**, pole 802' from DER, 664' left of centerline, 30' AGL/704' MSL. Trees beginning 895' from DER, 722' right of centerline, up to 88' AGL/762' MSL. **Rwy 30**, trees beginning 948' from DER, 395' left of centerline, up to 78' AGL/742' MSL. Trees beginning 1314' from DER, 57' right of centerline, up to 90' AGL/739' MSL. **Rwy 36**, trees beginning 1549' from DER, 14' left of centerline, up to 75' AGL/749' MSL. Trees beginning 460' from DER, 84' right of centerline, up to 72' AGL/751' MSL.

17117

DIXON, IL

DIXON MUNI-CHARLES R WALGREEN FIELD (C73)

TAKEOFF MINIMUMS AND (OBSTACLE)
DEPARTURE PROCEDURES

AMDT 4 13010 (FAA)

TAKEOFF MINIMUMS: **Rwy 26**, 400-2½ or std. w/ min. climb of 250' per NM to 1300.

NOTE: **Rwy 8**, vehicle on road beginning 336' from DER, on centerline, up to 15' AGL/798' MSL. **Rwy 12**, railroad track beginning 198' from DER, 288' right of centerline, up to 23' AGL/810' MSL. Vehicle on road beginning 150' from DER, 106' left of centerline, up to 15' AGL/794' MSL. Monopole 1606' from DER, 411' left of centerline, 45' AGL/827' MSL. **Rwy 26**, tower 2.0 NM from DER, 707' left of centerline, 749' AGL/1100' MSL. Light poles beginning 166' from DER, 361' right of centerline, up to 39' AGL/806' MSL. Stack 793' from DER, 672' right of centerline, 60' AGL/843' MSL. Railroad tracks 572' from DER, 305' right of centerline, 23' AGL/803' MSL. Rooftops beginning 428' from DER, 413' right of centerline, up to 36' AGL/805' MSL. Trees beginning 330' from DER, 83' left and right of centerline, up to 14' AGL/833' MSL. **Rwy 30**, rooftops beginning 321' from DER, 140' left of centerline, up to 62' AGL/833' MSL. Power line beginning 259' from DER, 120' right of centerline, up to 100' AGL/870' MSL. Trees beginning 769' from DER, 211' left and right of centerline, up to 100' AGL/896' MSL.

EAGLE RIVER, WI

EAGLE RIVER UNION (EGV)

TAKEOFF MINIMUMS AND (OBSTACLE)
DEPARTURE PROCEDURES

ORIG 06271 (FAA)

NOTE: **Rwy 4**, road 240' from DER, 559' right of centerline, 15' AGL/1654' MSL. Terrain 51' from DER, 288' right of centerline, 0' AGL/1639' MSL. **Rwy 13**, road 268' from DER, 572' left of centerline, 15' AGL/1654' MSL. **Rwy 22**, road 246' from DER, 566' right of centerline, 15' AGL/1654' MSL. Multiple trees 476' from DER, 430' right of centerline, 83' AGL/1722' MSL. Multiple trees 761' from DER, 147' left of centerline, 96' AGL/1735' MSL.

EAST TROY, WI

EAST TROY MUNI (57C)

TAKEOFF MINIMUMS AND (OBSTACLE)
DEPARTURE PROCEDURES

ORIG 10210 (FAA)

TAKEOFF MINIMUMS: **Rwys 18, 36**, NA-Environmental.

NOTE: **Rwy 8**, trees beginning 106' from DER, 45' right of centerline, up to 100' AGL/979' MSL. Trees beginning 34' from DER, 6' left of centerline, up to 100' AGL/908' MSL. **Rwy 26**, vehicle on road 346' from DER, 17' right of centerline, up to 15' AGL/865' MSL. Vehicle on road 561' from DER, 588' left of centerline, up to 15' AGL/865' MSL. Vehicle on road 607' from DER, 46' right of centerline, up to 17' AGL/867' MSL. Trees beginning 1850' from DER, 131' right of centerline, up to 100' AGL/989' MSL. Trees beginning 2870' from DER, 431' left of centerline, up to 100' AGL/959' MSL.

27 APR 2017 to 25 MAY 2017

TAKEOFF MINIMUMS, (OBSTACLE) DEPARTURE PROCEDURES, AND DIVERSE VECTOR AREA (RADAR VECTORS)

**TAKEOFF MINIMUMS, (OBSTACLE) DEPARTURE PROCEDURES, AND
DIVERSE VECTOR AREA (RADAR VECTORS)**

17117

EAU CLAIRE, WI

CHIPPEWA VALLEY RGNL (EAU)
TAKEOFF MINIMUMS AND (OBSTACLE)
DEPARTURE PROCEDURES
AMDT 2 08157 (FAA)

TAKEOFF MINIMUMS: **Rwy 14**, 500-2 ¾ or std. w/ min. climb of 295' per NM to 1500. **Rwy 32**, 200-1½ or std. w/ min. climb of 270' per NM to 1200.

DEPARTURE PROCEDURE: **Rwy 14**, climb heading 138° to 2000 before proceeding on course. **Rwy 22**, climb heading 224° to 1700 before proceeding on course. **Rwy 32**, climb heading 304° to 1700 before proceeding on course.

NOTE: **Rwy 4**, terrain 25' from DER, 98' left of centerline, 0' AGL/942' MSL. **Rwy 14**, trees beginning 336' from DER, 73' right of centerline, up to 62' AGL/1110' MSL. Trees beginning 999' from DER, 29' left of centerline up to 60' AGL/1159' MSL. Radio tower 2.2 NM from DER, 18' left of centerline, 455' AGL/1349' MSL. **Rwy 22**, vehicle on road and obstruction light on pole beginning 116' from DER, 426' right of centerline, up to 17' AGL/892' MSL. Trees 639' from DER, 509' left of centerline, 30' AGL/909' MSL. **Rwy 32**, trees beginning 184' from DER, 502' left of centerline, up to 67' AGL/1069' MSL. Trees beginning 562' from DER, 224' right of centerline, up to 74' AGL/933' MSL.

EFFINGHAM, IL

EFFINGHAM COUNTY MEMORIAL (1H2)
TAKEOFF MINIMUMS AND (OBSTACLE)
DEPARTURE PROCEDURES
AMDT 5A 11321 (FAA)

TAKEOFF MINIMUMS: **Rwy 1**, std. w/ min. climb of 220' per NM to 1300 or 1000-2½ for climb in visual conditions. **Rwy 19**, 300-1¼ or std. w/min. climb of 353' per NM to 1000.

DEPARTURE PROCEDURE: **Rwy 1**, climb heading 009° to 1100 before turning left or for climb in visual conditions, cross Effingham County Memorial airport at or above 1400 before proceeding on course. **Rwy 29**, climb heading 294° to 1100 before turning right.

NOTE: **Rwy 1**, vehicles on roadway, 439' from DER, left and right of centerline, up to 15' AGL/600' MSL. Trees beginning 389' from DER, 499' right of centerline, up to 100' AGL/680' MSL. **Rwy 11**, trees beginning 2071' from DER, left and right of centerline, up to 100' AGL/670' MSL. **Rwy 19**, trees beginning 5' from DER, left and right of centerline, up to 100' AGL/670' MSL. Side mount antenna, 5816' from DER, 1692' right of centerline, 141' AGL/ 773' MSL.

EPHRAIM, WI

EPHRAIM-GIBRALTAR (3D2)
TAKEOFF MINIMUMS AND (OBSTACLE)
DEPARTURE PROCEDURES
ORIG 11013 (FAA)

NOTE: **Rwy 14**, trees beginning 73' from DER, 218' right of centerline, up to 100' AGL/849' MSL. Trees beginning 81' from DER, 427' right of centerline, up to 100' AGL/849' MSL. Terrain 73' from DER, 458' right of centerline, 775' MSL. Terrain beginning 81' from DER, 427' left of centerline, up to 765' MSL. **Rwy 32**, trees beginning 246' from DER, 192' right of centerline, up to 100' AGL/869' MSL. Trees beginning 444' from DER, 451' left of centerline, up to 100' AGL/859' MSL. Terrain beginning 23' from DER, 134' right of centerline, 775' MSL. Terrain beginning 101' from DER, 20' left of centerline, 775' MSL.

FAIRFIELD, IL

FAIRFIELD MUNI (FWC)
TAKEOFF MINIMUMS AND (OBSTACLE)
DEPARTURE PROCEDURES
AMDT 2A 11097 (FAA)

TAKEOFF MINIMUMS: **Rwy 9**, 400-1 or std. with a min. climb of 370' per NM to 900. **Rwy 27**, 300-1 or std. with a min. climb of 320' per NM to 600.

NOTE: **Rwy 9**, tower 7280' from DER, 931' left of centerline, 277' AGL/730' MSL.

FLORA, IL

FLORA MUNI (FOA)
TAKEOFF MINIMUMS AND (OBSTACLE)
DEPARTURE PROCEDURES
AMDT 2 10322 (FAA)

DEPARTURE PROCEDURE: **Rwys 15, 33**, NA-Environmental.

NOTE: **Rwy 3**, trees beginning 198' from DER, 55' left of centerline. Up to 99' AGL/554' MSL. Pole 897' from DER, 389' left of centerline, 29' AGL/493' MSL. Vehicle on road beginning 293' from DER, 55' left of centerline, 15' AGL/479' MSL. Trees beginning 59' from DER, 312' right of centerline, up to 99' AGL/537' MSL. **Rwy 21**, vehicle on road beginning 11' from DER, 445' left of centerline, up to 15' AGL/488' MSL. Trees beginning 2730' from DER, 29' left of centerline, up to 98' AGL/572' MSL. Tree 2785' from DER, 108' right of centerline, 99' AGL/547' MSL.

27 APR 2017 to 25 MAY 2017

27 APR 2017 to 25 MAY 2017

17117

**TAKEOFF MINIMUMS, (OBSTACLE) DEPARTURE PROCEDURES, AND
DIVERSE VECTOR AREA (RADAR VECTORS)**

TAKEOFF MINIMUMS, (OBSTACLE) DEPARTURE PROCEDURES, AND DIVERSE VECTOR AREA (RADAR VECTORS)

17117

FOND DU LAC, WI

FOND DU LAC COUNTY (FLD)
TAKEOFF MINIMUMS AND (OBSTACLE)
DEPARTURE PROCEDURES
AMDT 1B 13290 (FAA)
DEPARTURE PROCEDURE: **Rwy 9**, climb runway heading to 2000 before turning north. **Rwy 36**, climb runway heading to 2000 before turning east.

FORT ATKINSON, WI

FORT ATKINSON MUNI (61C)
TAKEOFF MINIMUMS AND (OBSTACLE)
DEPARTURE PROCEDURES
AMDT 1 14037 (FAA)
TAKEOFF MINIMUMS: **Rwy 3**, 300-1½ or std. w/min. climb of 242' per NM to 1100', or alternatively, with standard takeoff minimums and a normal 200' per NM climb gradient, takeoff must occur no later than 2100' prior to DER.
NOTE: **Rwy 3**, obstruction light on water tower 1.2 miles from DER, 2213' left of centerline, 144' AGL/994' MSL. Tank 1.2 miles from DER, 2203' left of centerline, 144' AGL/993' MSL. Trees beginning 412' from DER, 34' left of centerline, up to 100' AGL/884' MSL. Trees beginning 930' from DER, 40' right of centerline, up to 100' AGL/882' MSL. Buildings beginning 544' from DER, 479' left of centerline, up to 29' AGL/835' MSL. Buildings beginning 786' from DER, 694' right of centerline, up to 22' AGL/817' MSL. Vehicle on road 670' from DER, 57' left of centerline, up to 15' AGL/814' MSL. **Rwy 21**, trees beginning 183' from DER, 380' right of centerline, up to 100' AGL/876' MSL. Trees beginning 1816' from DER, 698' left of centerline, up to 100' AGL/872' MSL. Sign 782' from DER, 684' right of centerline, 36' AGL/835' MSL. Vehicle on road 34' from DER, 81' left of centerline, up to 15' AGL/808' MSL.

FREESPORT, IL

ALBERTUS (FEP)
TAKEOFF MINIMUMS AND (OBSTACLE)
DEPARTURE PROCEDURES
ORIG 07130 (FAA)
TAKEOFF MINIMUMS: **Rwys 13, 18, 31, 36**, NA - Environmental.
NOTE: **Rwy 24**, multiple trees beginning 446' from DER, 450' right of centerline, up to 67' AGL/903' MSL.

FRIENDSHIP (ADAMS), WI

ADAMS CO. LEGION FIELD (63C)
TAKEOFF MINIMUMS AND (OBSTACLE)
DEPARTURE PROCEDURES
AMDT 1 02164 (FAA)
TAKEOFF MINIMUMS: **Rwys 8, 26**, NA - unsurveyed turf runways. **Rwy 33**, 500-2 or std. with a min. climb of 400' per NM to 1600.
NOTE: **Rwy 15**, power line 1210' from DER, 130' left of centerline, 60' AGL/1090' MSL. **Rwy 33**, trees 200' from DER, 200' left of centerline, 57' AGL/1032' MSL. Trees 1.43 NM from DER, 2653' left of centerline, 100' AGL/1399' MSL. Watch tower 1.69 NM from DER, 2271' left of centerline, 150' AGL/1400' MSL.

17117

TAKEOFF MINIMUMS, (OBSTACLE) DEPARTURE PROCEDURES, AND DIVERSE VECTOR AREA (RADAR VECTORS)

GALESBURG, IL

GALESBURG MUNI (GBG)
TAKEOFF MINIMUMS AND (OBSTACLE)
DEPARTURE PROCEDURES
ORIG 10210 (FAA)
NOTE: **Rwy 3**, trees beginning 1372' from DER, 352' right of centerline to 752' right of centerline, up to 55' AGL/819' MSL. **Rwy 10**, trees beginning 326' from DER, 154' right of centerline to 764' left of centerline, up to 63' AGL/820' MSL. Light 3969' from DER, 700' left of centerline 106' AGL/863' MSL. **Rwy 21**, trees beginning 361' from DER, 496' left of centerline, to 657' right of centerline, up to 42' AGL/796' MSL. **Rwy 28**, trees beginning 79' from DER, 138' left of centerline, to 330' right of centerline, up to 29' AGL/786' MSL. Pole 1204' from DER, 372' right of centerline 32' AGL/789' MSL.

GRANTSBURG, WI

GRANTSBURG MUNI (GTG)
TAKEOFF MINIMUMS AND (OBSTACLE)
DEPARTURE PROCEDURES
ORIG-A 12264 (FAA)
TAKEOFF MINIMUMS: **Rwys 5,23,NA** - Environmental.
NOTE: **Rwy 12**, trees beginning 154' from DER, 4' left of centerline, up to 102' AGL/1026' MSL. Vehicle on road beginning 178' from DER, 48' left of centerline, 15' AGL/938' MSL. Trees beginning 331' from DER, 34' right of centerline, up to 106' AGL/1030' MSL. Vehicle on road beginning 204' from DER, 306' right of centerline, 15' AGL/943' MSL. **Rwy 30**, trees beginning 164' from DER, 181' left of centerline, up to 69' AGL/993' MSL. Vehicle on road beginning 375' from DER, 451' left of centerline, 15' AGL/940' MSL. Trees beginning 112' from DER, 199' right of centerline, up to 24' AGL/948' MSL. Vehicle on road beginning 59' from DER, 30' right of centerline, 15' AGL/937' MSL.

GRAYSLAKE, IL

CAMPBELL (C81)
TAKEOFF MINIMUMS AND (OBSTACLE)
DEPARTURE PROCEDURES
AMDT 1 82063 (FAA)
TAKEOFF MINIMUMS: **Rwy 24**, 300-1.
DEPARTURE PROCEDURE: **Rwy 9**, climb runway heading to 1200 before turning.

GREEN BAY, WI

AUSTIN STRAUBEL INTL (GRB)
TAKEOFF MINIMUMS AND (OBSTACLE)
DEPARTURE PROCEDURES
AMDT 2 07354 (FAA)
DEPARTURE PROCEDURE: **Rwy 6**, climb heading 062° to 1300 before turning right. **Rwy 18**, climb heading 182° to 1600 before turning left.
NOTE: **Rwy 18**, tree 3022' from DER, 680' left of centerline, 100' AGL/779' MSL. **Rwy 24**, trees beginning 1556' from DER, 893' left of centerline, up to 100' AGL/779' MSL. Pole 1114' from DER, 665' left of centerline, 38' AGL/722' MSL.

TAKEOFF MINIMUMS, (OBSTACLE) DEPARTURE PROCEDURES, AND DIVERSE VECTOR AREA (RADAR VECTORS)

17117

GREENVILLE, IL

GREENVILLE (GRE)

TAKEOFF MINIMUMS AND (OBSTACLE)
DEPARTURE PROCEDURES

ORIG 10070 (FAA)

TAKEOFF MINIMUMS: **Rwys 9, 27**, NA-Environmental.

NOTE: **Rwy 18**, vehicle on road at DER, 376' left of centerline, up to 15' AGL/554' MSL. Trees beginning 534' from DER, 491' right of centerline, up to 100' AGL/639' MSL. Trees beginning 3097' from DER, 54' left of centerline, 100' AGL/629' MSL. **Rwy 36**, vehicle on road at DER, 393' right of centerline, up to 15' AGL/554' MSL.

GREENWOOD/WONDER LAKE, IL

GALT FIELD (10C)

TAKEOFF MINIMUMS AND (OBSTACLE)
DEPARTURE PROCEDURES

ORIG 11069 (FAA)

TAKEOFF MINIMUMS: **Rwys 18, 36**, NA-Environmental.

NOTE: **Rwy 9**, terrain rising 31' from DER, left and right of centerline, up to 857' MSL. Trees beginning 260' from DER, 319' right of centerline, up to 100' AGL/939' MSL. Trees beginning 352' from DER, 255' left of centerline, up to 100' AGL/949' MSL. **Rwy 27**, terrain rising 70' from DER, left and right of centerline, up to 922' MSL. Trees beginning 703' from DER, 225' left of centerline, up to 100' AGL/989' MSL. Trees beginning 885' from DER, 115' right of centerline, up to 100' AGL/999' MSL. Power lines and poles beginning 904' from DER, right and left of centerline, up to 100' AGL/1016' MSL. Vehicle on road 1027' from DER, 16' right of centerline, 15' AGL/914' MSL.

HARRISBURG, IL

HARRISBURG-RALEIGH (HSB)

TAKEOFF MINIMUMS AND (OBSTACLE)
DEPARTURE PROCEDURES

AMDT 1 10266 (FAA)

NOTE: **Rwy 6**, trees beginning 62' from DER, 257' left of centerline, up to 100' AGL/519' MSL. Trees and PVC pipe in concrete beginning 627' from DER, 230' left of centerline, up to 100' AGL/519' MSL. Tree 895' from DER, 523' right of centerline, 61' AGL/454' MSL. Tree 5590' from DER, 1383' left of centerline, 100' AGL/539' MSL. **Rwy 14**, vehicle 368' from DER, 594' right of centerline, 15' AGL/394' MSL. Trees beginning 3343' from DER, 1286' left of centerline, up to 100' AGL/509' MSL. **Rwy 24**, trees beginning 919' from DER, 487' right of centerline, up to 100' AGL/509' MSL. Trees beginning 1706' from DER, 420' right of centerline, up to 100' AGL/519' MSL. **Rwy 32**, vehicle 482' from DER, 609' left of centerline, 15' AGL/414' MSL. Trees beginning 1087' from DER, 207' left of centerline, up to 100' AGL/509' MSL. Trees beginning 1616' from DER, 45' right of centerline, up to 100' AGL/509' MSL.

HARTFORD, WI

HARTFORD MUNI (HXF)

TAKEOFF MINIMUMS AND (OBSTACLE)
DEPARTURE PROCEDURES

ORIG 11349 (FAA)

TAKEOFF MINIMUMS: **Rwys 1, 19**, NA- Environmental.

NOTE: **Rwy 11**, trees beginning abeam DER, 478' left of centerline, up to 100' AGL/1159' MSL. Trees beginning abeam DER, 233' right of centerline, up to 100' AGL/1139' MSL. Trees beginning 265' from DER, left and right of centerline, up to 100' AGL/1149' MSL. Transmission lines beginning 1316' from DER, left and right of centerline, up to 100' AGL/1169' MSL. Power lines beginning 1821' from DER, left and right of centerline, up to 30' AGL/1099' MSL. **Rwy 29**, terrain beginning 22' from DER, 249' right of centerline, 1060' MSL. Silo 2841' from DER, 536' right of centerline, 68' AGL/1127' MSL.

HAYWARD, WI

SAWYER COUNTY (HYR)

TAKEOFF MINIMUMS AND (OBSTACLE)
DEPARTURE PROCEDURES

AMDT 5 15232 (FAA)

TAKEOFF MINIMUMS: **Rwy 16, 34**, NA-Environmental.

NOTE: **Rwy 3**, trees and pole beginning 37' from DER, 163' left of centerline, up to 27' AGL/1238' MSL. Trees beginning 106' from DER, 224' right of centerline, up to 50' AGL/1260' MSL. Trees beginning 131' from DER, 311' left of centerline, up to 88' AGL/1298' MSL. Trees beginning 262' from DER, 412' right of centerline, up to 77' AGL/1288' MSL. Trees beginning 1818' from DER, crossing centerline, up to 100' AGL/1311' MSL. **Rwy 21**, vehicles on road, pole, and NAVAID beginning 17' from DER, 91' right of centerline, up to 23' AGL/1224' MSL. Tree 272' from DER, 416' left of centerline, 17' AGL/1218' MSL. Trees, pole, and NAVAID beginning 326' from DER, 254' right of centerline, up to 86' AGL/1284' MSL. Trees beginning 2344' from DER, crossing centerline, up to 100' AGL/1311' MSL.

JACKSONVILLE, IL

JACKSONVILLE MUNI (JXJ)

TAKEOFF MINIMUMS AND (OBSTACLE)
DEPARTURE PROCEDURES

ORIG 11293 (FAA)

NOTE: **Rwy 13**, trees beginning 811' from DER, 430' left of centerline, up to 100' AGL/708' MSL. Power lines 705' from DER, crossing centerline, 40' AGL/655' MSL. **Rwy 22**, trees beginning 2888' from DER, 259' left of centerline, up to 100' AGL/707' MSL. **Rwy 31**, trees beginning 2044' from DER, 823' right of centerline, up to 100' AGL/688' MSL.

17117

TAKEOFF MINIMUMS, (OBSTACLE) DEPARTURE PROCEDURES, AND DIVERSE VECTOR AREA (RADAR VECTORS)

TAKEOFF MINIMUMS, (OBSTACLE) DEPARTURE PROCEDURES, AND DIVERSE VECTOR AREA (RADAR VECTORS)

17117

JANESVILLE, WI

SOUTHERN WISCONSIN RGNL (JVL)

TAKEOFF MINIMUMS AND (OBSTACLE)
DEPARTURE PROCEDURES

ORIG 08101 (FAA)

TAKEOFF MINIMUMS: **Rwy 36**, 300-2¼ or std. w/ a min. climb of 203' per NM to 1200, or alternatively, with standard takeoff minimums and a normal 200'/NM climb gradient, takeoff must occur no later than 1200' prior to DER.

NOTE: **Rwy 4**, Road 342' from DER, 520' right of centerline, 17' AGL/846' MSL. Trees beginning 624' from DER, 366' left of centerline, up to 60' AGL/889' MSL. Light on pole 1290' from DER, 595' left of centerline, 21' AGL/840' MSL. Antenna 804' from DER, 190' left of centerline, 16' AGL/825' MSL.

Rwy 32, Tree 1524' from DER 857' left of centerline, 100' AGL/869' MSL. **Rwy 36**, tree 1427' from DER, 108' left of centerline, 42' AGL/851' MSL. Road 385' from DER, 20' left of centerline, 15' AGL/824' MSL. Tower 1.92 NM from DER, 1427' left of centerline, 258' AGL/1101' MSL.

JUNEAU, WI

DODGE COUNTY (UNU)

TAKEOFF MINIMUMS AND (OBSTACLE)
DEPARTURE PROCEDURES

ORIG 94286 (FAA)

TAKEOFF MINIMUMS: **Rwy 20**, 300-1.

KANKAKEE, IL

GREATER KANKAKEE (IKK)

TAKEOFF MINIMUMS AND (OBSTACLE)
DEPARTURE PROCEDURES

AMDT 1 13122 (FAA)

NOTE: **Rwy 4**, trees beginning 1296' from DER, 303' left of centerline, up to 36' AGL/666' MSL. Trees 2045' from DER, 231' left of centerline, 51' AGL/681' MSL. **Rwy 16**, trees beginning 525' from DER, 162' left of centerline, up to 27' AGL/639' MSL. Tree 2658' from DER, 1085' left of centerline, 81' AGL/698' MSL. **Rwy 34**, trees beginning 72' from DER, 406' right of centerline, up to 26' AGL/647' MSL. Trees beginning 501' from DER, 123' left of centerline, up to 51' AGL/672' MSL. Tree 993' from DER, 664' left of centerline, 73' AGL/690' MSL.

KENOSHA, WI

KENOSHA RGNL (ENW)

TAKEOFF MINIMUMS AND (OBSTACLE)
DEPARTURE PROCEDURES

ORIG 09239 (FAA)

NOTE: **Rwy 7R**, multiple light poles beginning 560' from DER, 342' right of centerline, up to 26' AGL/729' MSL. Multiple trees and pole beginning 569' from DER, 248' left of centerline, up to 54' AGL/760' MSL. **Rwy 7L**, multiple trees beginning 156' from DER, 324' left of centerline up to 52' AGL/761' MSL. **Rwy 25L**, multiple trees and hangars beginning 10' from DER, 209' right of centerline up to 11' AGL/760' MSL. Tree 22' from DER, 378' left of centerline 24' AGL/763' MSL. Fence, 200' from DER, 456' left of centerline, 8' AGL, 737' MSL. Vehicle on road 889' from DER, 187' left of centerline, 14' AGL/753' MSL. **Rwy 33**, multiple trees beginning 808' from DER, 39' right of centerline up to 81' AGL/811' MSL. Multiple trees beginning 1171' from DER, 78' left of centerline, up to 84' AGL/810' MSL. **Rwy 25R**, trees 2800' from DER, 603' left to right of centerline, 100' AGL/819' MSL.

17117

TAKEOFF MINIMUMS, (OBSTACLE) DEPARTURE PROCEDURES, AND DIVERSE VECTOR AREA (RADAR VECTORS)

KEWANEE, IL

KEWANEE MUNI (EZI)

TAKEOFF MINIMUMS AND (OBSTACLE)
DEPARTURE PROCEDURES

ORIG-A 09351 (FAA)

NOTE: **Rwy 27**, power lines and utility pole beginning 1424' from DER, 100' right of centerline, up to 79' AGL/925' MSL. Power lines 2215' from DER, 432' left of centerline, 79' AGL/916' MSL. Tree 2212' from DER, 972' left of centerline, 100' AGL/933' MSL.

LA CROSSE, WI

LA CROSSE RGNL (LSE)

TAKEOFF MINIMUMS AND (OBSTACLE)
DEPARTURE PROCEDURES

AMDT 6A 15008 (FAA)

TAKEOFF MINIMUMS: **Rwy 4**, std. w/ min. climb of 460' per NM to 1700, or 1400-2½ for climb in visual conditions. **Rwy 13**, std. w/ min. climb of 420' per NM to 2000, or 1400-2½ for climb in visual conditions.

Rwy 18, std. w/ min. climb of 400' per NM to 2200, or 1400-2½ for climb in visual conditions. **Rwy 22**, std. w/ min. climb of 430' per NM to 2100, or 1400-2½ for climb in visual conditions. **Rwy 31**, std. w/ min. climb of 340' per NM to 2500, or 1400-2½ for climb in visual conditions. **Rwy 36**, std. w/ min. climb of 400' per NM to 2200, or 1400-2½ for climb in visual conditions.

DEPARTURE PROCEDURE: **Rwys 4, 13, 18, 22, 31, 36**, for climb in visual conditions cross La Crosse Muni airport at or above 1900 MSL before proceeding on course.

NOTE: **Rwy 4**, trees beginning 498' from DER, right and left of centerline, up to 100' AGL/799' MSL. Pole 4371' from DER, 205' left of centerline, 84' AGL/784' MSL. **Rwy 13**, trees beginning 423' from DER, right and left of centerline, up to 100' AGL/754' MSL. **Rwy 18**, trees beginning 1337' from DER, right and left of centerline, up to 100' AGL/739' MSL. Vehicles on road beginning 477' from DER, right and left of centerline, 15' AGL/694' MSL.

LA CROSSE, WI (CON'T)

LA CROSSE RGNL (CON'T)

Rwy 22, vehicles on road and buildings beginning 478' from DER, right and left of centerline, up to 30' AGL/694' MSL. Trees beginning 1436' from DER, 281' left of centerline, up to 100' AGL/735' MSL. Light poles beginning 1503' from DER, 171' right of centerline, up to 35' AGL/695' MSL. **Rwy 31**, trees beginning 967' from DER, right and left of centerline, up to 100' AGL/754' MSL. **Rwy 36**, trees beginning 2910' from DER, right and left of centerline, up to 100' AGL/744' MSL.

27 APR 2017 to 25 MAY 2017

27 APR 2017 to 25 MAY 2017

TAKEOFF MINIMUMS, (OBSTACLE) DEPARTURE PROCEDURES, AND DIVERSE VECTOR AREA (RADAR VECTORS)

17117

LA POINTE, WI

MAJOR GILBERT FIELD (4R5)
TAKEOFF MINIMUMS AND (OBSTACLE)
DEPARTURE PROCEDURES
ORIG 08157 (FAA)
TAKEOFF MINIMUMS: **Rwy 22**, 300-2 or std. w/ min. climb of 213' per NM to 1200.
DEPARTURE PROCEDURE: **Rwy 22**, Climb heading 220° to 1200 before proceeding on course.
NOTE: **Rwy 4**, trees beginning 69' from DER, 5' left of centerline, up to 100' AGL/759' MSL. Trees beginning 340' from DER, 52' right of centerline, up to 100' AGL/759' MSL. **Rwy 22**, trees beginning 1867' from DER, 187' left of centerline, up to 100' AGL/710' MSL. Trees beginning 167' from DER, 23' right of centerline, up to 100' AGL/729' MSL.

LACON, IL

MARSHALL COUNTY (C75)
TAKEOFF MINIMUMS AND (OBSTACLE)
DEPARTURE PROCEDURES
AMDT 2 89236 (FAA)
TAKEOFF MINIMUMS: **Rwys 13, 18, 36**, 300-1.
DEPARTURE PROCEDURE: **Rwy 31**, climb runway heading to 1800 before turning.

LADYSMITH, WI

RUSK COUNTY (RCX)
TAKEOFF MINIMUMS AND (OBSTACLE)
DEPARTURE PROCEDURES
AMDT 1 12320 (FAA)
NOTE: **Rwy 1**, multiple trees 7' from DER, 420' right of centerline, up to 21' AGL/1271' MSL. Multiple trees 127' from DER, 319' right of centerline, up to 3' AGL/1243' MSL. Trees beginning 197' from DER, right and left of centerline, up to 100' AGL/1354' MSL. Vehicles on road beginning 110' from DER, right and left of centerline, up to 17' AGL/1263' MSL. Navaid 493' from DER, 534' left of centerline, 15' AGL/1252' MSL. Posts beginning 519' from DER, 387' left of centerline, up to 55' AGL/1296' MSL. Pole 772' from DER, 453' right of centerline, 35' AGL/1282' MSL. **Rwy 14**, sign 30' from DER, 485' right of centerline, 10' AGL/1228' MSL. Navaid 33' from DER, 124' right of centerline, 12' AGL/1232' MSL. Trees beginning 84' from DER, 491' left of centerline, up to 75' AGL/1304' MSL. Trees beginning 900' from DER, right and left of centerline, up to 75' AGL/1305' MSL.

LADYSMITH, WI (CON'T)

RUSK COUNTY (CON'T)
Rwy 19, trees beginning 7' from DER, 28' right of centerline, up to 53' AGL/1285' MSL. Vehicles on road 178' from DER, 349' right of centerline, 17' AGL/1234' MSL. Trees beginning 1132' from DER, 779' left of centerline up to 65' AGL/1285' MSL. Obstruction light on water tank and water tower beginning 3382' from DER, 1276' left of centerline, up to 134' AGL/1362' MSL. **Rwy 32**, trees beginning 22' from DER, 427' right of centerline, up to 30' AGL/1267' MSL. Trees beginning 137' from DER, right and left of centerline, up to 65' AGL/1301' MSL. Vehicles on road beginning 109' from DER, 312' right of centerline, up to 17' AGL/1251' MSL. Trees beginning 2458' from DER, 710' right of centerline, up to 100' AGL/1299' MSL.

17117

TAKEOFF MINIMUMS, (OBSTACLE) DEPARTURE PROCEDURES, AND DIVERSE VECTOR AREA (RADAR VECTORS)

LAKE GENEVA, WI

GRAND GENEVA RESORT (C02)
TAKEOFF MINIMUMS AND (OBSTACLE)
DEPARTURE PROCEDURES
AMDT 1 16091 (FAA)
TAKEOFF MINIMUMS: **Rwy 5**, 300-1¼ or 300-1 with minimum climb of 260' per NM to 1100. **Rwy 23**, 300-1½ or 300-1 with minimum climb of 310' per NM to 1200.
DEPARTURE PROCEDURE: **Rwy 23**, climb on heading 234° to 1500 before turning right.
NOTE: **Rwy 5**, trees beginning abeam DER, 51' right of centerline, up to 100' AGL/939' MSL. Trees beginning 456' from DER, 167' right of centerline, up to 100' AGL/1019' MSL. Trees beginning 1652' from DER, left and right of centerline, up to 100' AGL/969' MSL. Trees beginning 2428' from DER, 459' left of centerline, up to 100' AGL/989' MSL. Trees beginning 3408' from DER, 253' right of centerline, up to 100' AGL/979' MSL. Trees beginning 4645' from DER, 1697' left of centerline, up to 100' AGL/959' MSL. Trees beginning 5477' from DER, 1005' right of centerline, up to 100' AGL/1019' MSL. **Rwy 23**, trees beginning abeam DER, 86' left of centerline, up to 100' AGL/949' MSL. Trees beginning 333' from DER, 157' right of centerline, up to 100' AGL/949' MSL. Trees beginning 1467' from DER, 581' left of centerline, up to 100' AGL/979' MSL. Trees beginning 1559' from DER, 273' right of centerline, up to 100' AGL/1009' MSL. Trees beginning 3094' from DER, 558' left of centerline, up to 100' AGL/1009' MSL. Trees beginning 4099' from DER, left and right of centerline, up to 100' AGL/1039' MSL.

LAND O'LAKES, WI

KINGS LAND O'LAKES (LNL)
TAKEOFF MINIMUMS AND (OBSTACLE)
DEPARTURE PROCEDURES
AMDT 4 05132 (FAA)
TAKEOFF MINIMUMS: **Rwys 5, 23**, NA-obstacles.
NOTE: **Rwy 14**, road and vehicle 195' from DER, 245' left of centerline, 33' AGL/1737' MSL. **Rwy 32**, trees 50' from DER, 296' right of centerline, up to 100' AGL/1820' MSL. Trees 820' from DER, 220' right of centerline, 66' AGL/1770' MSL. Multiple trees beginning 480' from DER, 200' left of centerline, 60' AGL/1764' MSL. Tank 1144' from DER, 615' right of centerline, 125' AGL/1833' MSL.

LAWRENCEVILLE, IL

LAWRENCEVILLE-VINCENNES INTL (LWV)
TAKEOFF MINIMUMS AND (OBSTACLE)
DEPARTURE PROCEDURES
ORIG 10294 (FAA)
NOTE: **Rwy 9**, trees and irrigation booms beginning 419' from DER, 78' right of centerline, up to 100' AGL/539' MSL. Trees and irrigation booms beginning 750' from DER, 53' left of centerline, up to 100' AGL/539' MSL. **Rwy 18**, trees and irrigation booms beginning 275' from DER, 299' right of centerline, up to 100' AGL/524' MSL. Irrigation booms beginning 586' from DER, 362' left of centerline, up to 22' AGL/446' MSL. **Rwy 27**, vehicles on road and irrigation booms beginning 312' from DER, 50' right of centerline, up to 23' AGL/447' MSL. Vehicles on road and irrigation booms beginning 310' from DER, 50' left of centerline, up to 24' AGL/448' MSL.

TAKEOFF MINIMUMS, (OBSTACLE) DEPARTURE PROCEDURES, AND DIVERSE VECTOR AREA (RADAR VECTORS)

17117

LINCOLN, IL

LOGAN COUNTY (AAA)

TAKEOFF MINIMUMS AND (OBSTACLE)
DEPARTURE PROCEDURES
AMDT 1A 16091 (FAA)

TAKEOFF MINIMUMS: **Rwy 14, 32**, NA-
Environmental. **Rwy 21**, 300'-½ or std. with a min.
climb of 341' per NM to 800.

NOTE: **Rwy 3**, road/vehicles beginning 210' from
DER, 296' right of centerline, up to 15' AGL/607'
MSL. Trees beginning 783' from DER, 353' left of
centerline, up to 100' AGL/664' MSL. Trees 2733'
from DER, 390' left of centerline, up to 100'
AGL/676' MSL. **Rwy 21**, navaid 9' from DER, 111'
right of centerline, 3' AGL/594' MSL. Trees
beginning 377' from DER, 546' right of centerline,
up to 100' AGL/621' MSL. Trees beginning 1773'
from DER, 155' right of centerline, up to 100'
AGL/669' MSL. Multiple towers beginning 3190'
from DER, 579' right of centerline, up to 101'
AGL/689' MSL. Tower 4139' from DER, 158' left of
centerline, 126' AGL/715' MSL.

LITCHFIELD, IL

LITCHFIELD MUNI (3LF)

TAKEOFF MINIMUMS AND (OBSTACLE)
DEPARTURE PROCEDURES
AMDT 3 05300 (FAA)

NOTE: **Rwy 9**, tower 1058' left of DER, 132'
AGL/822' MSL.

LONE ROCK, WI

TRI COUNTY RGNL (LNR)

TAKEOFF MINIMUMS AND (OBSTACLE)
DEPARTURE PROCEDURES
AMDT 4 08185 (FAA)

TAKEOFF MINIMUMS: **Rwys 9, 27**, 600-1¼, or 1000
-2½ for climb in visual conditions. **Rwys 18, 36**, NA
-Environmental.

DEPARTURE PROCEDURE: **Rwys 9, 27**, for climb
in visual conditions: cross Tri-County Rgnl Airport
at or above 1600 before proceeding on course.

NOTE: **Rwy 9**, terrain and trees beginning 23' from
DER, 238' left of centerline, up to 100' AGL/1129'
MSL. Road beginning 244' from DER, 330' left of
centerline, up to 17' AGL/733' MSL. Terrain and
trees beginning 18' from DER, 235' right of
centerline, up to 100' AGL/722' MSL. **Rwy 27**,
building 764' from DER, 386' left of centerline, up to
25' AGL/744' MSL. Tree 1381' from DER, 590' left
of centerline, up to 70' AGL/785' MSL. Road
beginning 245' from DER, on centerline, up to 12'
AGL/731' MSL. Antennas and poles beginning 920'
from DER, 372' right of centerline, up to 33'
AGL/752' MSL. Trees and terrain beginning 2 NM
from DER, 2658' right of centerline, up to 100'
AGL/1199' MSL.

MACOMB, IL

MACOMB MUNI (MQB)

TAKEOFF MINIMUMS AND (OBSTACLE)
DEPARTURE PROCEDURES
AMDT 1 89236 (FAA)

DEPARTURE PROCEDURE: **Rwy 18**, climb runway
heading to 1700 before turning right. **Rwy 27**, climb
runway heading to 1700 before turning left.

17117

TAKEOFF MINIMUMS, (OBSTACLE) DEPARTURE PROCEDURES, AND DIVERSE VECTOR AREA (RADAR VECTORS)

MADISON, WI

BLACKHAWK AIRFIELD (87Y)

TAKEOFF MINIMUMS AND (OBSTACLE) DEPARTURE
PROCEDURES
AMDT 2 14261 (FAA)

TAKEOFF MINIMUMS: **Rwy 4**, 300-2 or std. w/min. climb of 212'
per NM to 1300. **Rwy 22**, 300-2 or std. w/min. climb of 479' per
NM to 1300. **Rwy 27**, 300-2¼ or std. w/min. climb of 256' per
NM to 1400.

DEPARTURE PROCEDURE: **Rwy 4**, climb heading 043° to 1500
before turning left.

NOTE: **Rwy 4**, trees beginning 35' from DER, left and right of
centerline, up to 35' AGL/934' MSL. Vehicle on road beginning
785' from DER, left and right of centerline, up to 17' AGL/926'
MSL. Trees beginning 1.6 NM from DER, left and right of
centerline, up to 100' AGL/1069' MSL. **Rwy 9**, trees beginning
141' from DER, 249' left of centerline, up to 35' AGL/974' MSL.
Vehicle on road beginning 265' from DER, left and right of
centerline, up to 15' AGL/944' MSL. Trees and buildings
beginning 1071' from DER, 612' right of centerline, up to 30'
AGL/939' MSL. Trees beginning 1337' from DER, left and right of
centerline, up to 100' AGL/999' MSL. Trees and buildings
beginning 1456' from DER, 729' left of centerline, up to 100'
AGL/1009' MSL. **Rwy 22**, trees beginning 35' from DER, left
and right of centerline, up to 35' AGL/944' MSL. Houses
beginning 1085' from DER, left and right of centerline, up to 30'
AGL/1019' MSL. Vehicles on road beginning 1087' from DER,
left and right of centerline, up to 15' AGL/974' MSL. Water tower
3995' from DER, 792' left of centerline, 81' AGL/1089' MSL.

Rwy 27, trees beginning 142' from DER, left and right of
centerline, up to 35' AGL/984' MSL. Vehicle on road beginning
222' from DER, on centerline, up to 15' AGL/934' MSL. Poles
and buildings beginning 1101' from DER, left and right of
centerline, up to 40' AGL/959' MSL. Trees 3539' from DER, 941'
right of centerline, up to 100' AGL/1049' MSL. Pole 4567' from
DER, 225' right of centerline, 63' AGL/1070' MSL. Water tower
1.3 NM from DER, 335' right of centerline, 177' AGL/1186' MSL.
Trees beginning 1.7 NM from DER, left and right of centerline,
up to 100' AGL/1139' MSL.

DANE COUNTY RGNL-TRUAX FIELD (MSN)

TAKEOFF MINIMUMS AND (OBSTACLE) DEPARTURE
PROCEDURES

AMDT 8A 16035 (FAA)

TAKEOFF MINIMUMS: **Rwy 3**, 200-1½ or std. w/min. climb of
212' per NM to 1200.

DEPARTURE PROCEDURE: **Rwy 18**, (Southwest departures
200° CW 260°) climb on heading 179° to 3200 before
proceeding on course. **Rwy 21**, (Southwest departures 200°
CW 260°) climb on heading 206° to 3200 before proceeding on
course.

NOTE: **Rwy 3**, tower 7137' from DER, 2392' left of centerline,
132' AGL/1082' MSL. Trees beginning 4368' from DER, 1526'
left of centerline, up to 100' AGL/1082' MSL. **Rwy 14**, trees and
poles beginning 936' from DER, left and right of centerline, up to
100' AGL/986' MSL. Antenna on building 3747' from DER, 1283'
left of centerline, 57' AGL/976' MSL. Vehicle on road 134' from
DER, left to right of centerline, up to 17' AGL/874' MSL. **Rwy 18**,
trees beginning 287' from DER, left and right of centerline,
up to 100' AGL/941' MSL. **Rwy 21**, trees beginning 1557' from
DER, 383' right of centerline, up to 100' AGL/972' MSL. Sign 29'
from DER, 118' left of centerline, 6' AGL/862' MSL. Glideslope
antenna 1144' from DER, 140' left of centerline, 39' AGL/898'
MSL. **Rwy 32**, trees beginning 1810' from DER, left and right of
centerline, up to 100' AGL/948' MSL. Railroad 672' from DER,
left to right of centerline, 23' AGL/882' MSL. **Rwy 36**, trees and
pole beginning 1325' from DER, left and right of centerline, up to
100' AGL/1012' MSL. Rapidly rising terrain 1467' from DER,
678' right of centerline, up to 947' MSL. Vehicle on road 1154'
from DER, left to right of centerline, up to 17' AGL/908' MSL.

TAKEOFF MINIMUMS, (OBSTACLE) DEPARTURE PROCEDURES, AND DIVERSE VECTOR AREA (RADAR VECTORS)

17117

MANITOWISH WATERS, WI

MANITOWISH WATERS (D25)
TAKEOFF MINIMUMS AND (OBSTACLE)
DEPARTURE PROCEDURES
ORIG 10154 (FAA)
TAKEOFF MINIMUMS: **Rwy 4, 22**, NA-Environment.
NOTE: **Rwy 14**, trees beginning 93' from DER, 225' right of centerline, up to 100' AGL/1709' MSL. Trees beginning 279' from DER, 441' left of centerline, up to 100' AGL/1709' MSL. **Rwy 32**, trees beginning 70' from DER, 343' left of centerline, up to 100' AGL/1714' MSL. Trees beginning 151' from DER, 362' right of centerline, up to 100' AGL/1714' MSL. Road 617' from DER, 44' right of centerline, 15' AGL/1634' MSL.

MANITOWOC, WI

MANITOWOC COUNTY (MTW)
TAKEOFF MINIMUMS AND (OBSTACLE)
DEPARTURE PROCEDURES
AMDT 4 09071 (FAA)
TAKEOFF MINIMUMS: **Rwy 17**, 300-1½ or std. with a min. climb of 254' per NM to 1000.
DEPARTURE PROCEDURE: **Rwy 17**, climb heading 072° to 1200 before proceeding on course. **Rwy 25**, climb heading 252° to 1200 before proceeding on course.
NOTE: **Rwy 7**, tree 520' from DER, 279' left of centerline, 27' AGL/666' MSL. **Rwy 17**, stack 1.24 NM from DER, 1915' left of centerline, 310' AGL/893' MSL. Trees beginning 23' from DER, 16' left of centerline, up to 94' AGL/743' MSL. Trees beginning 1802' from DER, 76' right of centerline, up to 98' AGL/747' MSL. Flaggpole 1234' from DER, 512' right of centerline, 36' AGL/695' MSL. Antenna 989' from DER, 511' right of centerline, 39' AGL/688' MSL. **Rwy 25**, tree 734' from DER, 321' right of centerline, 48' AGL/697' MSL. Tree 1870' from DER, 223' left of centerline, 63' AGL/722' MSL. Train on railroad, 744' from DER, on centerline, 23' AGL/676' MSL. **Rwy 35**, trees beginning 167' from DER, 477' right of centerline, up to 66' AGL/710' MSL. Tree 2012' from DER, 863' left of centerline, 67' AGL/716' MSL.

MARION, IL

WILLIAMSON COUNTY RGNL (MWA)
TAKEOFF MINIMUMS AND (OBSTACLE)
DEPARTURE PROCEDURES
ORIG-A 10070 (FAA)
TAKEOFF MINIMUMS: **Rwy 11**, 600-3 or std. with a min. climb of 235' per NM to 1200.
DEPARTURE PROCEDURE: **Rwy 11**, Climb via heading 107° to 1100 before turning left.
NOTE: **Rwy 2**, trees beginning 119' from DER, 265' left of centerline, up to 106' AGL/543' MSL. **Rwy 11**, poles beginning 630' from DER, 496' right of centerline, up to 75' AGL/518' MSL. Tree 1298' from DER, 594' right of centerline, 81' AGL/528' MSL. Tank 5154' from DER, 800' right of centerline, 164' AGL/601' MSL. Tower 3.16 NM from DER, 1.32 NM left of centerline, 490' AGL/980' MSL. **Rwy 20**, trees beginning 1538' from DER, 823' right of centerline, up to 68' AGL/521' MSL. **Rwy 29**, wind sock 341' from DER, 291' left of centerline, 11' AGL/461' MSL. Trees beginning 559' from DER, 360' right of centerline, up to 77' AGL/534' MSL. Theater screen 1347' from DER, 634' right of centerline, 77' AGL/530' MSL.

MARSHFIELD, WI

MARSHFIELD MUNI (MFI)
TAKEOFF MINIMUMS AND (OBSTACLE)
DEPARTURE PROCEDURES
ORIG 06271 (FAA)
NOTE: **Rwy 34**, multiple trees beginning 1412' from DER, 532' left of centerline, up to 60' AGL/1359' MSL.

MATTOON-CHARLESTON, IL

COLES COUNTY MEMORIAL (MTO)
TAKEOFF MINIMUMS AND (OBSTACLE)
DEPARTURE PROCEDURES
AMDT 4 09351(FAA)
NOTE: **Rwy 11**, trees beginning 1842' from DER, 869' left of centerline, up to 100' AGL/803' MSL.

MEDFORD, WI

TAYLOR COUNTY (MDZ)
TAKEOFF MINIMUMS AND (OBSTACLE)
DEPARTURE PROCEDURES
AMDT 3 13066 (FAA)
NOTE: **Rwy 9**, trees beginning 1123' from DER, 561' left of centerline, up to 61' AGL/1540' MSL. Trees beginning 2555' from DER, 592' right of centerline, up to 85' AGL/1544' MSL. **Rwy 16**, trees beginning 7' from DER, 248' left of centerline, up to 75' AGL/1524' MSL. Vehicle on road beginning 33' from DER, 8' left of centerline, up to 15' AGL/1466' MSL. Vehicle on road beginning 27' from DER, 93' right of centerline, up to 15' AGL/1462' MSL. **Rwy 27**, pole 112' from DER, 498' right of centerline, 13' AGL/1482' MSL. Windsock 389' from DER, 270' right of centerline, 18' AGL/1487' MSL. Antenna 598' from DER, 501' right of centerline, 11' AGL/1480' MSL. Trees beginning 2049' from DER, 627' left of centerline, up to 75' AGL/1525' MSL. Tower 3741' from DER, 1111' left of centerline, 150' AGL/1580' MSL. **Rwy 34**, terrain beginning 37' from DER, 482' right of centerline, 1461' MSL. Trees beginning 370' from DER, 187' right of centerline, up to 41' AGL/1510' MSL. Poles beginning 489' from DER, 310' right of centerline, up to 26' AGL/1488' MSL.

27 APR 2017 to 25 MAY 2017

27 APR 2017 to 25 MAY 2017

17117

TAKEOFF MINIMUMS, (OBSTACLE) DEPARTURE PROCEDURES, AND DIVERSE VECTOR AREA (RADAR VECTORS)

TAKEOFF MINIMUMS, (OBSTACLE) DEPARTURE PROCEDURES, AND DIVERSE VECTOR AREA (RADAR VECTORS)

17117

MENOMONIE, WI

MENOMONIE MUNI-SCORE FIELD (LUM)
TAKEOFF MINIMUMS AND (OBSTACLE)
DEPARTURE PROCEDURES
AMDT 1 11349 (FAA)

TAKEOFF MINIMUMS: **Rwy 18**, 500-2 or std. w/min.
climb of 584' per NM to 1600.

DEPARTURE PROCEDURE: **Rwy 18**, climb heading
176° to 1500 before turning right. **Rwy 36**, climb
heading 356° to 1600 before turning left.

NOTE: **Rwy 9**, buildings beginning 116' from DER, 346'
right of centerline, up to 40' AGL/939' MSL. **Rwy 18**,
trees beginning 891' from DER, 377' right of centerline,
up to 100' AGL/999' MSL. Trees beginning 923' from
DER, 158' left of centerline, up to 100' AGL/999' MSL.
Power lines 1295' from DER, left and right of
centerline, up to 32' AGL/931' MSL. Building 1989'
from DER, 645' right of centerline, up to 100' AGL/999'
MSL. Trees beginning 2120' from DER, 417' right of
centerline, up to 100' AGL/1079' MSL. Terrain
beginning 2278' from DER, 746' right of centerline,
999' MSL. **Rwy 27**, trees beginning 433' from DER,
545' right of centerline, up to 44' AGL/943' MSL.
Antenna on stk, 2666' from DER, 660' left of centerline,
98' AGL/987' MSL. Trees beginning 792' from DER,
447' left of centerline, up to 46' AGL/935' MSL. Pole
706' from DER, 636' right of centerline, 32' AGL/931'
MSL. Trees beginning 2619' from DER, 581' left of
centerline, up to 83' AGL/972' MSL. **Rwy 36**, multiple
buildings beginning 472' from DER, 471' left of
centerline, up to 40' AGL/959' MSL. Vehicle on road
669' from DER, left and right of centerline, up to 15'
AGL/934' MSL. Building 809' from DER, 607' right of
centerline, up to 40' AGL/959' MSL. Trees beginning
2220' from DER, left and right of centerline, up to 100'
AGL/999' MSL.

MERRILL, WI

MERRILL MUNI (RRL)
TAKEOFF MINIMUMS AND (OBSTACLE)
DEPARTURE PROCEDURES
ORIG 07242 (FAA)

NOTE: **Rwy 7**, bush 55' from DER, 468' left of
centerline, 5' AGL/1311' MSL. Pole 392' from DER,
512' right of centerline, 23' AGL/1329' MSL. Building
358' from DER, 451' right of centerline, 21' AGL/1327'
MSL. Multiple trees beginning 905' from DER, from
727' right to 552' left of centerline, up to 91' AGL/1400'
MSL. Multiple trees beginning 2597' from DER, from
22' right to 86' left of centerline, up to 82' AGL/1401'
MSL. **Rwy 16**, multiple trees beginning 1587' from
DER, on centerline, up to 100' AGL/1439' MSL. **Rwy 25**,
bush 132' from DER, 494' right of centerline, 13'
AGL/1331' MSL. Pole 1240' from DER, 778' left of
centerline, 37' AGL/1356' MSL. Multiple trees
beginning 1085' from DER, from 554' right to 359' left
of centerline, up to 69' AGL/1388' MSL. **Rwy 34**,
multiple trees beginning 49' from DER, from 33' right to
139' left of centerline, up to 100' AGL/1439' MSL.

MIDDLETON, WI

MIDDLETON MUNI-MOREY FIELD (C29)
TAKEOFF MINIMUMS AND (OBSTACLE)
DEPARTURE PROCEDURES
AMDT 1 05356 (FAA)

TAKEOFF MINIMUMS: **Rwy 28**, 300-1 or std. with a min.
climb of 468' per NM to 1300. **Rwys 1, 19**, NA-turf.

DEPARTURE PROCEDURE: **Rwy 10**, climb via heading
101° to 2600 before proceeding on course. **Rwy 28**,
climb via heading 281° to 2600 before proceeding on
course.

NOTE: **Rwy 28**, multiple trees beginning 2067' from DER,
583' left of centerline, up to 60' AGL/1032' MSL.

MILWAUKEE, WI

GENERAL MITCHELL INTL (MKE)
TAKEOFF MINIMUMS AND (OBSTACLE)
DEPARTURE PROCEDURES
AMDT 8A 13206 (FAA)

TAKEOFF MINIMUMS: **Rwy 7R**, 300-1½ or std. w/min.
climb of 290' per NM to 1100. **Rwy 31**, 300-1½ or std. w/
min. climb of 255' per NM to 1000.

NOTE: **Rwy 1L**, fence 148' from DER, left and right of
centerline, up to 10' AGL/678' MSL. Pole 575' from DER,
594' left of centerline, 18' AGL/689' MSL. Pole 1859' from
DER, 912' right of centerline, 18' AGL/734' MSL.
Antenna 1928' from DER, 1' right of centerline, 15' AGL/
727' MSL. Terrain beginning 1671' from DER, 751' left of
centerline, up to 726' MSL. Tower and poles beginning
2284' from DER, 463' right of centerline, up to 31'
AGL/750' MSL. Trees beginning 2492' from DER, 901'
left of centerline, up to 59' AGL/780' MSL. Trees 3256'
from DER, 445' left of centerline, up to 68' AGL/769'
MSL. Trees beginning 3697' from DER, 154' right of
centerline, up to 84' AGL/776' MSL. **Rwy 1R**, terrain 11'
from DER, left and right of centerline, up to 673' MSL.
Rod 581' from DER, 600' left of centerline, 48' AGL/719'
MSL. Tree 4336' from DER, 462' right of centerline, 64'
AGL/795' MSL.

27 APR 2017 to 25 MAY 2017

27 APR 2017 to 25 MAY 2017

17117

TAKEOFF MINIMUMS, (OBSTACLE) DEPARTURE PROCEDURES, AND DIVERSE VECTOR AREA (RADAR VECTORS)

TAKEOFF MINIMUMS, (OBSTACLE) DEPARTURE PROCEDURES, AND DIVERSE VECTOR AREA (RADAR VECTORS)

17117

MILWAUKEE, WI (CON'T)

GENERAL MITCHELL INTL (CON'T)

Rwy 7L, terrain beginning 177' from DER, 145' right of centerline, 683' MSL. Terrain beginning 61' from DER, 143' left of centerline, 686' MSL. Building 319' from DER, 456' right of centerline, 25' AGL/696' MSL. Poles beginning 1727' from DER, 48' left of centerline, up to 60' AGL/751' MSL. Trees beginning 1407' from DER, 458' left of centerline, up to 93' AGL/822' MSL. Tree 3817' from DER, 176' right of centerline, 84' AGL/785' MSL. **Rwy 7R**, lights, signs, and terrain beginning 23' from DER, 85' left of centerline, up to 2' AGL/672' MSL. Poles and railroad 708' from DER, left and right of centerline, up to 23' AGL/711' MSL. Trees beginning 2194' from DER, 250' left of centerline, up to 71' AGL/742' MSL. Trees beginning 2244' from DER, 124' right of centerline, up to 93' AGL/764' MSL. Stack 1.2 NM from DER, 2099' right of centerline, 215' AGL/930' MSL. Stack 1.3 NM from DER, 1166' left of centerline, 180' AGL/891' MSL. **Rwy 13**, terrain 19' from DER, 223' left of centerline, 673' MSL. Terrain 59' from DER, 152' right of centerline, 673' MSL. Poles, trees, and railroad beginning 966' from DER, 208' left of centerline, up to 40' AGL/711' MSL. Poles, trees, and railroad 1172' from DER, 7' right of centerline, up to 46' AGL/717' MSL. Trees beginning 2172' from DER, 208' left of centerline, up to 79' AGL/750' MSL. Tree 2227' from DER, 1035' left of centerline, 79' AGL/750' MSL. **Rwy 19L**, tower 1837' from DER, 559' right of centerline, 71' AGL/749' MSL. **Rwy 19R**, terrain beginning 174' from DER, left and right of centerline, up to 712' MSL. **Rwy 25L**, antenna 217' from DER, 300' right of centerline, 14' AGL/735' MSL. Tree 2679' from DER, 305' right of centerline, 68' AGL/799' MSL. Antenna and tree 2790' from DER, 1200' right of centerline, up to 71' AGL/820' MSL. **Rwy 25R**, pole 604' from DER, 336' left of centerline, 38' AGL/709' MSL. Hangar 625' from DER, 363' right of centerline, 31' AGL/702' MSL. Tree 1297' from DER, 187' left of centerline, 45' AGL/716' MSL. Pole 1605' from DER, 301' right of centerline, 49' AGL/720' MSL. **Rwy 31**, terrain 31' from DER, 70' right of centerline, 676' MSL. Fence 197' from DER, left and right of centerline, up to 10' AGL/681' MSL. Sign 219' from DER, 450' right of centerline, 51' AGL/730' MSL. Poles 265' from DER, left and right of centerline, up to 25' AGL/706' MSL. Trees beginning 1362' from DER, 390' left of centerline, up to 52' AGL/731' MSL. Trees and pole beginning 1351' from DER, 341' right of centerline, up to 69' AGL/758' MSL. Trees and pole beginning 2390' from DER, 345' right of centerline, up to 56' AGL/775' MSL. Tank 1.1 NM from DER, 742' right of centerline, 167' AGL/885' MSL. Transmission tower 4854' from DER, 1622' right of centerline, 81' AGL/ 802' MSL.

MILWAUKEE, WI (CON'T)

LAWRENCE J. TIMMERMAN (MWC) TAKEOFF MINIMUMS AND (OBSTACLE) DEPARTURE PROCEDURES AMDT 1B 13318 (FAA)

TAKEOFF MINIMUMS: **Rwys 4R, 15R, 22L, 33L**, N/A
Environmental and obstacles.
DEPARTURE PROCEDURE: **Rwy 4L**, climb heading 038° to 2100 before turning East. **Rwy 15L**, climb heading 148° to 2100 before turning East. **Rwy 22R**, climb heading 218° to 2100 before turning East. **Rwy 33R**, climb heading 328° to 2100 before turning East.
NOTE: **Rwy 4L**, transmission line 5082' from DER, 917' left of centerline, 133' AGL/878' MSL. Building 75' from DER, 480' left of centerline, 33' AGL/771' MSL. Fence 197' from DER, 381' left of centerline, 6' AGL/745' MSL. Billboard 565' from DER, 178' left of centerline, 17' AGL/755' MSL. AC equipment 926' from DER, 741' left of centerline, 70' AGL/808' MSL. Tree 1106' from DER, 731' right of centerline, 70' AGL/808' MSL. Building 887' from DER, 641' left of centerline, 67' AGL/805' MSL. Numerous trees beginning 623' from DER, right and left of centerline, up to 100' AGL/820' MSL. Vehicle on road 517' from DER on centerline, 17' AGL/755' MSL. **Rwy 15L**, vehicles on road beginning 628' from DER, 186' left of centerline, up to 31' AGL/780' MSL. Pole 1549' from DER, 462' right of centerline, 41' AGL/796' MSL. Poles and lights beginning 958' from DER, 281' left of centerline, up to 51' AGL/801' MSL. Lights beginning 1421' from DER, 512' right of centerline, up to 42' AGL/797' MSL. Antenna on building 437' from DER, 264' left of centerline, 12' AGL/756' MSL. Billboard 816' from DER, 297' left of centerline, 31' AGL/775' MSL. Trees beginning 487' from DER, 397' left of centerline, up to 67' AGL/817' MSL. Trees beginning 1203' from DER, 247' left of centerline, up to 85' AGL/835' MSL. Trees beginning 583' from DER, 165' right of centerline, up to 50' AGL/791' MSL. Trees beginning 1186' from DER, 184' right of centerline, up to 76' AGL/831' MSL. Trees beginning 2297' from DER, left and right of centerline, up to 86' AGL/841' MSL. **Rwy 22R**, trees beginning 553' from DER, right and left of centerline, up to 100' AGL/820' MSL. **Rwy 33R**, trees beginning 495' from DER, 18' left of centerline, up to 100' AGL/797' MSL. Tree 1257' from DER, 130' right of centerline, 100' AGL/783' MSL.

MINERAL POINT, WI

IOWA COUNTY (MRJ)

TAKEOFF MINIMUMS AND (OBSTACLE) DEPARTURE PROCEDURES ORIG 11293 (FAA)

NOTE: **Rwy 4**, trees beginning 503' from DER, 103' right of centerline, up to 100' AGL/ 1289' MSL. Trees beginning 2199' from DER, 667' left of centerline, up to 100' AGL/ 1279' MSL. **Rwy 11**, trees beginning 95' from DER, 79' right of centerline, up to 100' AGL/ 1259' MSL. Trees beginning 467' from DER, 517' left of centerline, up to 100' AGL/ 1259' MSL. **Rwy 22**, vehicles on road beginning 102' from DER, left and right of centerline, up to 15' AGL/ 1184' MSL. Trees beginning 324' from DER, 40' right of centerline, up to 100' AGL/ 1279' MSL. Tree 1241' from DER, 627' left of centerline, 100' AGL/ 1239' MSL. **Rwy 29**, trees beginning 536' from DER, 497' right of centerline, up to 100' AGL/ 1179' MSL. Trees beginning 1319' from DER, 571' left of centerline, up to 100' AGL/ 1209' MSL.

17117

TAKEOFF MINIMUMS, (OBSTACLE) DEPARTURE PROCEDURES, AND DIVERSE VECTOR AREA (RADAR VECTORS)

TAKEOFF MINIMUMS, (OBSTACLE) DEPARTURE PROCEDURES, AND DIVERSE VECTOR AREA (RADAR VECTORS)

17117

MINOCQUA-WOODRUFF, WI

LAKELAND/NOBLE F LEE MEMORIAL
FIELD (ARV)

TAKEOFF MINIMUMS AND (OBSTACLE)
DEPARTURE PROCEDURES
ORIG 09351 (FAA)

NOTE: **Rwy 10**, trees beginning 239' from DER, 545' right of centerline, up to 100' AGL/1729' MSL. Trees beginning 424' from DER, 576' left of centerline, up to 100' AGL/1729' MSL. **Rwy 18**, trees beginning 785' from DER, 482' right of centerline, up to 100' AGL/1729' MSL. Trees beginning 825' from DER, 506' left of centerline, up to 100' AGL/1729' MSL.

Rwy 28, trees beginning 659' from DER, 564' right of centerline, up to 100' AGL/1729' MSL. Trees beginning 474' from DER, 432' left of centerline, up to 100' AGL/1729' MSL.

Rwy 36, trees and windssock beginning 157' from DER, 5' right of centerline, up to 96' AGL/1725' MSL. Trees beginning 1280' from DER, 29' left of centerline, up to 100' AGL/1749' MSL.

MOLINE, IL

QUAD CITY INTL (MLI)

TAKEOFF MINIMUMS AND (OBSTACLE)
DEPARTURE PROCEDURES
AMDT 1A 12320 (FAA)

TAKEOFF MINIMUMS: **Rwy 9**, 200-1¼ or std. w/min. climb of 272' per NM to 900. **Rwy 13**, 200-1½ or std. w/min. climb of 318' per NM to 900. **Rwy 23**, 300-1¼ or std. w/min. climb of 421' per NM to 900.

DEPARTURE PROCEDURE: **Rwy 5**, climb on heading 058° to 2000 before turning left. **Rwy 9**, climb on heading 090° to 1500 before turning left. **Rwy 13**, climb on heading 126° to 1200 before turning. **Rwy 23**, climb on heading 228° to 1200 before turning. **Rwy 27**, climb on heading 270° to 1200 before turning. **Rwy 31**, climb on heading 306° to 1600 before turning.

NOTE: **Rwy 5**, trees, buildings, and signs beginning 1196' from DER, 26' left of centerline, up to 50' AGL/642' MSL. Trees 1252' from DER, 392' right of centerline, 67' AGL/637' MSL. **Rwy 9**, pole 772' from DER, 683' left of centerline, 27' AGL/596' MSL. Trees beginning 2485' from DER, 944' left of centerline, up to 100' AGL/663' MSL. Trees and poles beginning 4432' from DER, 676' right of centerline, up to 100' AGL/757' MSL. **Rwy 13**, vehicles on roadway beginning 751' from DER, 219' right of centerline, up to 15' AGL/606' MSL. Trees beginning 1522' from DER, 429' right of centerline, up to 33' AGL/775' MSL. Trees, rising terrain, vehicles on roadways, and buildings beginning 3243' from DER, 49' right to left of centerline, up to 85' AGL/775' MSL. Trees and transmission towers beginning 4655' from DER, 186' left of centerline, up to 131' AGL/777' MSL. Trees beginning 3317' from DER, 359' right of centerline, up to 86' AGL/676' MSL. **Rwy 23**, trees and transmission lines beginning 2914' from DER, 49' left of centerline, up to 107' AGL/807' MSL. **Rwy 27**, trees beginning 1553' from DER, 664' left of centerline, up to 52' AGL/622' MSL. **Rwy 31**, trees beginning 909' from DER, 530' right of centerline, up to 82' AGL/642' MSL. Trees beginning 1197' from DER, 269' left of centerline, up to 88' AGL/648' MSL. Tree 2464' from DER, 214' right of centerline, 87' AGL/657' MSL.

MONEE, IL

BULT FIELD (C56)

TAKEOFF MINIMUMS AND (OBSTACLE)
DEPARTURE PROCEDURES
ORIG 09071 (FAA)

NOTE: **Rwy 9**, vehicle on road 145' from DER, on centerline, 15' AGL/785' MSL. **Rwy 27**, vehicle on road 150' from DER, on centerline, 15' AGL/797' MSL. Metal chimney 305' from DER, 210' left of centerline, 29' AGL/812' MSL. Tree 367' from DER, 161' left of centerline, 40' AGL/819' MSL. Pole barn 421' from DER, 202' left of centerline, 22' AGL/801' MSL. Trees beginning 1484' from DER, 223' right of centerline, up to 100' AGL/859' MSL.

MONMOUTH, IL

MONMOUTH MUNI (C66)

TAKEOFF MINIMUMS AND (OBSTACLE)
DEPARTURE PROCEDURES
AMDT 2A 12180 (FAA)

TAKEOFF MINIMUMS: **Rwy 20**, 400-2½ or std. w/min. climb of 321' per NM to 1200.

NOTE: **Rwy 2**, vehicle on road beginning at DER, 201' right of centerline, 15' AGL/764' MSL. Trees beginning at DER, 251' right of centerline, up to 100' AGL/849' MSL. Trees beginning 841' from DER, left and right of centerline, up to 100' AGL/849' MSL. **Rwy 20**, vehicle on road, beginning 347' from DER, left and right of centerline, 17' AGL/776' MSL. Trees beginning 449' from DER, left and right of centerline, up to 100' AGL/859' MSL.

MONROE, WI

MONROE MUNI (EFT)

TAKEOFF MINIMUMS AND (OBSTACLE)
DEPARTURE PROCEDURES
AMDT 2 09127 (FAA)

NOTE: **Rwy 2**, vehicle on road 926' from DER, left and right of centerline, up to 17' AGL/1116' MSL. Trees beginning 182' from DER, 175' right of centerline, up to 100' AGL/1169' MSL. **Rwy 12**, trees beginning 1234' from DER, 655' right of centerline, up to 100' AGL/1189' MSL. **Rwy 20**, trees beginning 712' from DER, 288' right of centerline, up to 100' AGL/1129' MSL. **Rwy 30**, trees beginning 1918' from DER, 87' right of centerline, up to 100' AGL/1209' MSL. Vehicle on road 1166' from DER, 157' right of centerline, up to 17' AGL/1126' MSL.

MONTECELLO, IL

PIATT COUNTY (2K0)

TAKEOFF MINIMUMS AND (OBSTACLE)
DEPARTURE PROCEDURES
ORIG 11293 (FAA)

DEPARTURE PROCEDURE: Climb heading 360° to 1200 before turning left.

NOTE: **Rwy 18**, trees beginning 1092' from DER, 146 left of centerline, up to 100' AGL/821' MSL. Trees beginning 1603' from DER, 91' right of centerline, up to 100' AGL/821' MSL. **Rwy 36**, power poles beginning 457' from DER, 213' right of centerline, up to 40' AGL/777' MSL. Hangars beginning 193' from DER, 317' left of centerline, up to 25' AGL/760' MSL. Hangar 345' from DER, 171' right of centerline, 30' AGL/766' MSL. Vehicle on road 508' from DER, 162' right of centerline, 15' AGL/752' MSL. Houses beginning 597' from DER, 254' right of centerline, up to 30' AGL/767' MSL.

17117

TAKEOFF MINIMUMS, (OBSTACLE) DEPARTURE PROCEDURES, AND DIVERSE VECTOR AREA (RADAR VECTORS)

TAKEOFF MINIMUMS, (OBSTACLE) DEPARTURE PROCEDURES, AND DIVERSE VECTOR AREA (RADAR VECTORS)

17117

MORRIS, IL

MORRIS MUNI-JAMES R WASHBURN
FIELD (C09)

TAKEOFF MINIMUMS AND (OBSTACLE)
DEPARTURE PROCEDURES
AMDT 1 08325 (FAA)

TAKEOFF MINIMUMS: **Rwy 18**, 400-2 or std. w/ min.
climb of 320' per NM to 1000.

NOTE: **Rwy 18**, tree 511' from DER, 607' right of
centerline, 100' AGL/659' MSL. Tower 8810' from
DER, 647' right of centerline, 290' AGL/840' MSL.
Rwy 36, trees beginning 1562' from DER, 758' right
of centerline extending to 722' left of centerline, 100'
AGL/679' MSL.

MOSINEE, WI

CENTRAL WISCONSIN (CWA)

TAKEOFF MINIMUMS AND (OBSTACLE)
DEPARTURE PROCEDURES
AMDT 1 13010 (FAA)

DEPARTURE PROCEDURE: **Rwy 35**, (northbound
departures 330° CW 045°) climbing left turn to 3500
on heading 330° and AUW R-270 before turning on
course.

NOTE: **Rwy 8**, antenna and obstruction light on
building 369' from DER, 193' left of centerline, 40'
AGL/1269' MSL. Trees beginning 567' from DER,
557' left of centerline, up to 36' AGL/1275' MSL.
Trees beginning 1767' from DER, 709' left of
centerline, up to 100' AGL/1319' MSL. Trees
beginning 454' from DER, 520' right of centerline,
100' AGL/1319' MSL. **Rwy 17**, trees beginning 697'
from DER, 625' left of centerline, up to 100'
AGL/1299' MSL. Trees beginning 2161' from DER,
987' right of centerline, up to 100' AGL/1289' MSL.
Rwy 26, rod on pole 1065' from DER, 723' left of
centerline, 50' AGL/1310' MSL. Trees beginning
4096' from DER, 599' right of centerline, up to 100'
AGL/1389' MSL. **Rwy 35**, obstruction light on
windsock and poles beginning 507' from DER, 436'
right of centerline, up to 30' AGL/1303' MSL. Trees
beginning 1404' from DER, 670' right of centerline,
up to 100' AGL/1335' MSL. Antenna, pole,
obstruction light, and chimney beginning 2714' from
DER, 858' right of centerline, up to 60' AGL/1359'
MSL. Antenna 1042' from DER, 250' left of
centerline, 25' AGL/1306' MSL. Trees beginning
2500' from DER, 367' left of centerline, up to 65'
AGL/1346' MSL. Tank and antenna on water tank
beginning 3245' from DER, 1338' left of centerline,
up to 100' AGL/1382' MSL.

MOUNT CARMEL, IL

MOUNT CARMEL MUNI (AJG)

TAKEOFF MINIMUMS AND (OBSTACLE)
DEPARTURE PROCEDURES
AMDT 1 14093 (FAA)

TAKEOFF MINIMUMS: **Rwy 22**, 300-1 or std. w/ min. climb of
325' per NM to 700. **Rwy 31**, 300-1 or std. w/ min. climb of
225' per NM to 700, or alternatively, with standard takeoff
minimums and a normal 200' per NM climb gradient, takeoff
must occur no later than 1600' prior to DER.

NOTE: **Rwy 4**, vehicle on road 409' from DER, 170' left of
centerline, up to 15' AGL/404' MSL. Trees 3718' from DER,
130' right of centerline, 85' AGL/525' MSL. **Rwy 13**, vehicle
on road 7' from DER, 190' right of centerline, 15' AGL/445'
MSL. Trees beginning 2438' from DER, 839' right of
centerline, up to 100' AGL/542' MSL. REIL 41' from DER,
112' left of centerline, 1' AGL/413' MSL. **Rwy 22**, ground
beginning 194' from DER, 262' right of centerline, up to 459'
MSL. Trees beginning 535' from DER, 146' right of centerline,
up to 90' AGL/587' MSL. Tree 81' from DER, 146' right of
centerline, 19' AGL/448' MSL. Antenna on grain elevator
4403' from DER, 378' left of centerline, 100' AGL/606' MSL.
Rwy 31, poles beginning 1812' from DER, 318' left of
centerline, up to 55' AGL/484' MSL. Trees beginning 2886'
from DER, 112' left of centerline, up to 98' AGL/527' MSL.
Trees beginning 3657' from DER, 217' right of centerline, up
to 91' AGL/580' MSL.

MOUNT STERLING, IL

MOUNT STERLING MUNI (I63)

TAKEOFF MINIMUMS AND (OBSTACLE)
DEPARTURE PROCEDURES
ORIG 09183 (FAA)

NOTE: **Rwy 18**, trees beginning 1555' from DER, 309' right of
centerline, up to 95' AGL/784' MSL. Tree 2243' from DER,
856' left of centerline, 100' AGL/819' MSL. **Rwy 36**, vehicle
on road and pole 686' from DER, 486' right of centerline, up to
60' AGL/779' MSL. Vehicle on road and trees beginning 679'
from DER, 365' left of centerline, up to 100' AGL/839' MSL.

MOUNT VERNON, IL

MOUNT VERNON (MVN)

TAKEOFF MINIMUMS AND (OBSTACLE)
DEPARTURE PROCEDURES
ORIG 07074 (FAA)

DEPARTURE PROCEDURE: **Rwy 33**, climb via heading 331°
to 1300 before turning left.

NOTE: **Rwy 5**, multiple trees beginning 1615' from DER, 7' left
of centerline, up to 134' AGL/602' MSL, antenna 2477' from
DER, 990' right of centerline, 79' AGL/547' MSL, tree 3329'
from DER, 519' right of centerline, 98' AGL/566' MSL. **Rwy 15**,
multiple trees beginning 712' from DER, 17' right of
centerline, up to 71' AGL/529' MSL, tree 908' from DER, 465'
left of centerline, 70' AGL/527' MSL, railroad 608' from DER,
159' right of centerline, 23' AGL/479' MSL, road 564' from
DER, 3' right of centerline, 15' AGL/472' MSL. **Rwy 23**,
multiple trees beginning 1705' from DER, 102' right of
centerline, up to 72' AGL/539' MSL, tree 1797' from DER, 158'
left of centerline, 57' AGL/524' MSL, railroad 238' from DER,
500' left of centerline, 23' AGL/485' MSL, multiple roads
beginning 12' from DER, 367' left of centerline, up to 15'
AGL/479' MSL, fencepost 291' from DER, 426' right of
centerline, 9' AGL/476' MSL. **Rwy 33**, multiple trees
beginning 696' from DER, 130' right of centerline, up to 93'
AGL/573' MSL, multiple trees beginning 689' from DER, 216'
left of centerline, up to 105' AGL/585' MSL.

17117

TAKEOFF MINIMUMS, (OBSTACLE) DEPARTURE PROCEDURES, AND DIVERSE VECTOR AREA (RADAR VECTORS)

**TAKEOFF MINIMUMS, (OBSTACLE) DEPARTURE PROCEDURES, AND
DIVERSE VECTOR AREA (RADAR VECTORS)**

17117

NECEDAH, WI**NECEDAH (DAF)**

TAKEOFF MINIMUMS AND (OBSTACLE)
DEPARTURE PROCEDURES
ORIG 11265 (FAA)

NOTE: **Rwy 18**, road beginning at DER, left and right of centerline, up to 15' AGL/934' MSL. Trees and buildings beginning at DER, 446' left of centerline, up to 100' AGL/1019' MSL. Trees and buildings beginning at DER, 317' right of centerline, up to 100' AGL/1019' MSL. **Rwy 36**, trees beginning 711' from DER, 687' left of centerline, up to 100' AGL/1021' MSL. Power lines, building and railroad beginning 19' from DER, 268' right of centerline, up to 100' AGL/1012' MSL.

NEILLSVILLE, WI**NEILLSVILLE MUNI (VIQ)**

TAKEOFF MINIMUMS AND (OBSTACLE)
DEPARTURE PROCEDURES
ORIG 12264 (FAA)

NOTE: **Rwy 10**, poles, vehicle on road, and trees beginning 159' from DER, 15' left of centerline, up to 59' AGL/1358' MSL. Building, navaid, poles, silo, tank, and trees beginning 9' from DER, 6' right of centerline, up to 82' AGL/1371' MSL. **Rwy 28**, trees beginning 6' from DER, 149' left of centerline, up to 74' AGL/1233' MSL. Poles and trees beginning 147' from DER, 217' right of centerline, up to 54' AGL/1253' MSL.

NEW HOLSTEIN, WI**NEW HOLSTEIN MUNI (8D1)**

TAKEOFF MINIMUMS AND (OBSTACLE)
DEPARTURE PROCEDURES
ORIG 11293 (FAA)

TAKEOFF MINIMUMS: **Rwys 4, 22**, NA - Environmental. **Rwy 32**, 300-1 or std. w/min. climb of 350' per NM to 1200.

NOTE: **Rwy 14**, rising terrain beginning 135' from DER, 187' left of centerline, up to 985' MSL. Terrain with trees beginning 143' from DER, left and right of centerline, up to 100' AGL/1117' MSL. **Rwy 32**, vehicles on road beginning 6' from DER, 19' right of centerline, up to 19' AGL/998' MSL. Poles beginning 332' from DER, left and right of centerline, up to 37' AGL/1033' MSL. Terrain with trees beginning 561' from DER, left and right of centerline, up to 100' AGL/1129' MSL.

NEW LISBON, WI**MAUSTON-NEW LISBON UNION (82C)**

TAKEOFF MINIMUMS AND (OBSTACLE)
DEPARTURE PROCEDURES
ORIG-A 15064 (FAA)

TAKEOFF MINIMUMS: **Rwys 14, 32**, 400-1 or std. with a min. climb of 220' per NM to 1400.

NOTE: **Rwy 14**, vehicle on road beginning 22' from DER, 153' left of centerline, up to 15' AGL/907' MSL. trees beginning 20' from DER, 15' right of centerline, up to 87' AGL/987' MSL. Trees beginning 715' from DER, 39' left of centerline, up to 95' AGL/985' MSL. **Rwy 32**, fence beginning 67' from DER, 300' right of centerline, up to 6' AGL/918' MSL. Vehicle on road beginning 72' from DER, 5' right and left of centerline, up to 15' AGL/954' MSL. Trees beginning 110' from DER, 146' left and right of centerline, up to 97' AGL/1007' MSL. Terrain beginning 190' from DER, 43' left and right of centerline, up to 941' MSL. Buildings beginning 2202' from DER, 398' left and right of centerline, up to 64' AGL/981' MSL.

NEW RICHMOND, WI**NEW RICHMOND RGNL (RNH)**

TAKEOFF MINIMUMS AND (OBSTACLE)
DEPARTURE PROCEDURES
ORIG-A 15204 (FAA)

TAKEOFF MINIMUMS: **Rwy 4, 22**, NA-Environmental. NOTE: **Rwy 14**, multiple trees beginning 810' from DER, 230' left of centerline, up to 100' AGL/1099' MSL. Vehicle on road 502' from DER, 612' left of centerline, 15' AGL/1014' MSL. **Rwy 32**, vehicle on road 425' from DER, 591' left of centerline, 15' AGL/1014' MSL. Multiple trees beginning 1460' from DER, 443' right of centerline, up to 100' AGL/1099' MSL.

OCONTO, WI**OCONTO-J DOUGLAS BAKE MUNI (OCQ)**

TAKEOFF MINIMUMS AND (OBSTACLE)
DEPARTURE PROCEDURES
ORIG 11181 (FAA)

TAKEOFF MINIMUMS: **Rwys 4, 22**, NA - ATC.

NOTE: **Rwy 11**, trees beginning 8' from DER, left and right of centerline, up to 91' AGL/693' MSL. **Rwy 29**, trees beginning 342' from DER, left and right of centerline, up to 80' AGL/684' MSL. Vehicle on road beginning 182' from DER, 286' right of centerline, 15' AGL/619' MSL. Fence 340' from DER, 553' left of centerline, 9' AGL/614' MSL. REIL 14' from DER, 76' left of centerline, 1' AGL/605' MSL.

27 APR 2017 to 25 MAY 2017

27 APR 2017 to 25 MAY 2017

17117

**TAKEOFF MINIMUMS, (OBSTACLE) DEPARTURE PROCEDURES, AND
DIVERSE VECTOR AREA (RADAR VECTORS)**

TAKEOFF MINIMUMS, (OBSTACLE) DEPARTURE PROCEDURES, AND DIVERSE VECTOR AREA (RADAR VECTORS)

17117

OLNEY/NOBLE, IL

OLNEY/NOBLE (OLY)

TAKEOFF MINIMUMS AND (OBSTACLE)

DEPARTURE PROCEDURES

ORIG 10098 (FAA)

NOTE: **Rwy 3**, trees beginning 11' from DER, 108' left of centerline, up to 100' AGL/579' MSL. **Rwy 11**, trees beginning 27' from DER, 292' right of centerline, up to 100' AGL/579' MSL. Trees beginning 1928' from DER, 719' left of centerline, up to 100' AGL/569' MSL. **Rwy 21**, trees beginning 43' from DER, 405' right of centerline, up to 100' AGL/569' MSL. Vehicles on roadway beginning 197' from DER, left and right of centerline, up to 17' AGL/494' MSL. **Rwy 29**, vehicles on roadway beginning 481' from DER, left and right of centerline, up to 15' AGL/504' MSL. Trees beginning 703' from DER, 30' left of centerline, up to 100' AGL/589' MSL. Trees beginning 3791' from DER, left and right of centerline, up to 100' AGL/599' MSL.

OSCEOLA, WI

L.O. SIMENSTAD MUNI (OEO)

TAKEOFF MINIMUMS AND (OBSTACLE)

DEPARTURE PROCEDURES

ORIG 07074 (FAA)

TAKEOFF MINIMUMS: **Rwys 4, 22**, NA-environmental. NOTE: **Rwy 10**, multiple trees beginning 9951' from DER, 3135' right of centerline, up to 100' AGL/1159' MSL. Multiple trees beginning 1785' from DER, 932' left of centerline, up to 100' AGL/1149' MSL. **Rwy 28**, multiple trees beginning 3534' from DER, 1277' right of centerline, up to 100' AGL/979' MSL. Truck on road beginning 421' from DER 71' left of centerline, 15' AGL/904' MSL.

OSHKOSH, WI

WITTMAN RGNL (OSH)

TAKEOFF MINIMUMS AND (OBSTACLE)

DEPARTURE PROCEDURES

AMDT 1 13234 (FAA)

NOTE: **Rwy 5**, vehicle on road beginning 11' from DER, left and right of centerline, up to 15' AGL/787' MSL. Buildings beginning 396' from DER, left and right of centerline, up to 31' AGL/800' MSL. Trees and poles beginning 83' from DER, left and right of centerline, up to 73' AGL/842' MSL. **Rwy 9**, poles and obstruction light on hangar beginning 28' from DER, 485' right of centerline, up to 50' AGL/822' MSL. Train on railroad tracks beginning 601' from DER, 221' left of centerline, up to 23' AGL/794' MSL. Trees and poles beginning 462' from DER, 145' left of centerline, up to 93' AGL/852' MSL. Trees and poles beginning 889' from DER, 147' right of centerline, up to 110' AGL/863' MSL. **Rwy 13**, buildings beginning 33' from DER, 452' left of centerline, up to 24' AGL/800' MSL. Vehicle on road beginning 197' from DER, left and right of centerline, up to 15' AGL/793' MSL. Trees beginning 115' from DER, left and right of centerline, up to 68' AGL/847' MSL. Poles and light beginning 711' from DER, left and right of centerline, up to 50' AGL/829' MSL. Vent pipes and building beginning 1017' from DER, 6' right of centerline, up to 39' AGL/814' MSL.

OSHKOSH, WI (CON'T)

WITTMAN RGNL (CON'T)

Rwy 18, trees beginning 1563' from DER, 898' left of centerline, up to 68' AGL/877' MSL.

Rwy 23, vehicle on road beginning 132' from DER, left and right of centerline, up to 15' AGL/809' MSL. Buildings, flag pole, trees, and poles beginning 21' from DER, 255' left of centerline, up to 30' AGL/819' MSL. Trees and poles beginning 843' from DER, left and right of centerline, up to 63' AGL/882' MSL. Control tower, airport beacon, and obstruction light on control tower beginning 1674' from DER, 702' right of centerline, up to 141' AGL/941' MSL. Communications tower 2514' from DER, 1068' right of centerline, 63' AGL/870' MSL. Flag pole 2582' from DER, 990' left of centerline, 65' AGL/874' MSL. Terrain 51' from DER, 445' left of centerline, 792' MSL. **Rwy 27**, trees, poles and traffic signal beginning 2198' from DER, 63' left of centerline, up to 48' AGL/867' MSL. Poles and sign beginning 1205' from DER, 652' right of centerline, up to 36' AGL/845' MSL. **Rwy 31**, antennas and trees beginning 1133' from DER, 317' right of centerline, up to 50' AGL/832' MSL. Trees and poles beginning 1437' from DER, 1193' right of centerline, up to 65' AGL/843' MSL. **Rwy 36**, navaid 149' from DER, 4' left of centerline, 15' AGL/801' MSL. Sign 24' from DER, 474' left of centerline, 2' AGL/791' MSL.

PARIS, IL

EDGAR COUNTY (PRG)

TAKEOFF MINIMUMS AND (OBSTACLE)

DEPARTURE PROCEDURES

AMDT 1 16203 (FAA)

NOTE: **Rwy 9**, airfield lt 9' from DER, 11' right of centerline, 2' AGL/651' MSL. Wsk 305' from DER, 237' right of centerline, 660' MSL. Pole 575' from DER, 385' right of centerline, 673' MSL. Pole 640' from DER, 321' left of centerline, 671' MSL. Trees beginning 877' from DER, 556' left of centerline, up to 705' MSL. Tree 1359' from DER, 634' right of centerline, 688' MSL. Tree 1513' from DER, 628' right of centerline, 689' MSL. Tree 1750' from DER, 334' right of centerline, 705' MSL. Trees beginning 1775' from DER, 126' right of centerline, up to 707' MSL. Tree 2001' from DER, 322' right of centerline, 710' MSL. Trees beginning 2100' from DER, 406' right of centerline, up to 711' MSL. Tree 2129' from DER, 1037' left of centerline, 711' MSL. Tree 2243' from DER, 1052' left of centerline, 722' MSL. Tree 2324' from DER, 1037' right of centerline, 713' MSL. Tree 2429' from DER, 1151' right of centerline, 714' MSL. **Rwy 18**, terrain 20' from DER, 18' left of centerline, 655' MSL. Wsk 297' from DER, 235' right of centerline, 668' MSL. Vehicles on road beginning 440' from DER, 353' right of centerline, up to 672' MSL. **Rwy 27**, grd 1' from DER, 454' left of centerline, 658' MSL. Terrain 23' from DER, 14' right of centerline, 655' MSL. Terrain beginning 42' from DER, 361' left of centerline, up to 659' MSL. Tree 56' from DER, 321' right of centerline, 693' MSL. Tree 112' from DER, 439' right of centerline, 716' MSL. Tree 195' from DER, 372' right of centerline, 79' AGL/727' MSL. Tree and wsk beginning 266' from DER, 100' right of centerline, up to 93' AGL/729' MSL. Trees beginning 1204' from DER, 621' left of centerline, up to 718' MSL. Tree and pole beginning 1331' from DER, 258' left of centerline, up to 739' MSL...

27 APR 2017 to 25 MAY 2017

27 APR 2017 to 25 MAY 2017

17117

TAKEOFF MINIMUMS, (OBSTACLE) DEPARTURE PROCEDURES, AND DIVERSE VECTOR AREA (RADAR VECTORS)

TAKEOFF MINIMUMS, (OBSTACLE) DEPARTURE PROCEDURES, AND DIVERSE VECTOR AREA (RADAR VECTORS)

17117

PARIS, IL (CON'T)**EDGAR COUNTY (CON'T)**

Rwy 36, fence 17' from DER, 338' left of centerline, 4' AGL/648' MSL. Wsk 301' from DER, 136' right of centerline, 656' MSL. Trees beginning 681' from DER, 47' right of centerline, up to 720' MSL. Trees beginning 771' from DER, 382' left of centerline, up to 705' MSL. Trees beginning 1182' from DER, 52' left of centerline, up to 714' MSL.

PARK FALLS, WI**PARK FALLS MUNI (PKF)****TAKEOFF MINIMUMS AND (OBSTACLE)****DEPARTURE PROCEDURES**

ORIG 99028 (FAA)

DEPARTURE PROCEDURE: Rwy 18, 36, climb runway heading to 3400 before turning east.

PAXTON, IL**PAXTON (1C1)****TAKEOFF MINIMUMS AND (OBSTACLE)****DEPARTURE PROCEDURES**

AMDT 1 10182 (FAA)

TAKEOFF MINIMUMS: Rwy 36, 300-1½ or std. w/ min. climb of 321' per NM to 1200.

NOTE: Rwy 36, vehicles on road 439' from DER, crossing from left to right, up to 15' AGL/796' MSL. Trees beginning 557' from DER, 31' right of centerline, up to 60' AGL/849' MSL. Tower 1.1 NM from DER, 1761' left of centerline, 179' AGL/983' MSL.

PEKIN, IL**PEKIN MUNI (C15)****TAKEOFF MINIMUMS AND (OBSTACLE)****DEPARTURE PROCEDURES**

ORIG 08269 (FAA)

NOTE: Rwy 9, trees beginning 62' from DER, 411' right of centerline, up to 63' AGL/583' MSL. Poles beginning 819' from DER, 388' left of centerline, up to 32' AGL/552' MSL. Poles beginning 824' from DER, 411' right of centerline, up to 34' AGL/554' MSL. **Rwy 27**, rising terrain 718' from DER, 103' left of centerline, up to 550' MSL.

PEORIA, IL**GENERAL DOWNING - PEORIA INTL (PIA)****TAKEOFF MINIMUMS AND (OBSTACLE)****DEPARTURE PROCEDURES**

AMDT 2 15120 (FAA)

NOTE: Rwy 4, trees beginning 1217' from DER, 548' left of centerline, up to 85' AGL/742' MSL. Trees beginning 1389' from DER, 597' right of centerline, up to 75' AGL/728' MSL. Tank 4757' from DER, 1617' left of centerline, 131' AGL/781' MSL. **Rwy 13**, trees beginning 1020' from DER, 722' left of centerline, up to 85' AGL/705' MSL. Trees 1175' from DER, 773' right of centerline, 60' AGL/682' MSL. Flagpole 1748' from DER, 783' right of centerline, 53' AGL/687' MSL. Trees beginning 3783' from DER, 1448' left of centerline, up to 85' AGL/747' MSL. **Rwy 22**, trees beginning 450' from DER, 558' right of centerline, up to 60' AGL/691' MSL. **Rwy 31**, trees beginning 818' from DER, 607' left of centerline, up to 50' AGL/706' MSL. Trees beginning 1480' from DER, 690' right of centerline, up to 75' AGL/736' MSL. Trees beginning 2000' from DER, 900' left of centerline, up to 75' AGL/760' MSL. Trees beginning 3400' from DER, 165' right of centerline, up to 75' AGL/776' MSL.

MOUNT HAWLEY AUXILIARY (3MY)**TAKEOFF MINIMUMS AND (OBSTACLE)****DEPARTURE PROCEDURES**

AMDT 3 13346 (FAA)

NOTE: Rwy 18, trees beginning 369' from DER, 247' left of centerline, up to 100' AGL/ 826' MSL. Trees beginning 537' from DER, 351' right of centerline, up to 100' AGL/ 853' MSL. Building 714' from DER, 291' left of centerline, 30' AGL/809' MSL. Building 1104' from DER, 225' left of centerline, 23' AGL/802 MSL. Trees 1328' from DER, across centerline, up to 100' AGL/ 834 MSL. **Rwy 36**, peak 100' from DER, 374' right of centerline. 20' AGL/809' MSL. Trees beginning 506' from DER, 12' right of centerline, up to 100' AGL/ 899' MSL. Trees beginning 810' from DER, 324' left of centerline, up to 100' AGL/ 909' MSL. Trees and light poles beginning 946' from DER, 514' right of centerline, 46' AGL/ 845' MSL. Vehicles on roadway 984' from DER, 420' left of centerline, 15' AGL/824' MSL. Tower 2311' from DER, 655' left of centerline, 61' AGL/ 858' MSL.

PERU, IL**ILLINOIS VALLEY RGNL-WALTER A. DUNCAN FIELD (VYS)****TAKEOFF MINIMUMS AND (OBSTACLE)****DEPARTURE PROCEDURES**

AMDT 1 15288 (FAA)

TAKEOFF MINIMUMS: Rwy 7, 300-1 or std. w/min. climb of 285' per NM to 900.

DEPARTURE PROCEDURE: Rwy 18, climb heading 198° to 1400 before turning left.

NOTE: Rwy 7, numerous poles beginning 501' from DER, right and left of centerline, up to 65' AGL/704' MSL. **Rwy 18**, bush 82' from DER, 266' right of centerline, 5' AGL/641' MSL. Tree 1858' from DER, 803' left of centerline, 59' AGL/687' MSL. **Rwy 25**, trees beginning 1176' from DER, right and left of centerline, up to 111' AGL/718' MSL. **Rwy 36**, sign 1929' from DER, 936' right of centerline, 69' AGL/723' MSL. Poles beginning 1070' from DER, crossing left and right of centerline up to 71' AGL/713' MSL.

17117

TAKEOFF MINIMUMS, (OBSTACLE) DEPARTURE PROCEDURES, AND DIVERSE VECTOR AREA (RADAR VECTORS)

**TAKEOFF MINIMUMS, (OBSTACLE) DEPARTURE PROCEDURES, AND
DIVERSE VECTOR AREA (RADAR VECTORS)**

17117

PHILLIPS, WI**PRICE COUNTY (PBH)****TAKEOFF MINIMUMS AND (OBSTACLE)
DEPARTURE PROCEDURES**

AMDT 1 11349 (FAA)

TAKEOFF MINIMUMS: **Rwy 6**, 300-1¼ or std. w/min. climb of 220' per NM to 1700. **Rwy 19**, 300-1 or std. w/min. climb of 353' per NM to 1800.

NOTE: **Rwy 1**, trees beginning 121' from DER, 189' right of centerline, up to 80' AGL/1599' MSL. Trees beginning 289' from DER, 104' left of centerline, up to 64' AGL/1567' MSL. **Rwy 6**, trees beginning 9' from DER, 224' right of centerline, up to 100' AGL/1569' MSL. Trees beginning 5' from DER, 223' left of centerline, up to 100' AGL/1569' MSL. Trees beginning 1 NM from DER, on centerline, up to 100' AGL/1639' MSL. **Rwy 19**, trees beginning 1986' from DER, 8' right of centerline, up to 68' AGL/1527' MSL. Tank and trees beginning 62' from DER, 43' left of centerline, up to 144' AGL/1624' MSL. **Rwy 24**, hangers and trees beginning 110' from DER, 443' right of centerline, up to 100' AGL/1609' MSL. Hanger, trees and vehicles on road beginning 128' from DER, 397' left of centerline, up to 100' AGL/1549' MSL.

PINCKNEYVILLE, IL**PINCKNEYVILLE-DU QUOIN (PJY)****TAKEOFF MINIMUMS AND (OBSTACLE)
DEPARTURE PROCEDURES**

ORIG 11265 (FAA)

NOTE: **Rwy 18**, vehicle on road beginning at DER, 340' left of centerline, 15' AGL/409' MSL. Power lines and vehicle on road beginning 507' from DER, left and right of centerline, up to 40' AGL/434' MSL. **Rwy 36**, trees beginning 1740' from DER, 724' right of centerline, up to 100' AGL/495' MSL.

PITTSFIELD, IL**PITTSFIELD PENSTONE MUNI (PPQ)****TAKEOFF MINIMUMS AND (OBSTACLE)
DEPARTURE PROCEDURES**

ORIG 12208 (FAA)

NOTE: **Rwy 13**, vehicles on roadway beginning 27' from DER, 360' right of centerline, up to 15' AGL/724' MSL. Trees beginning 819' from DER, 564' right of centerline, up to 100' AGL/779' MSL. Trees beginning 912' from DER, 629' left of centerline, up to 100' AGL/759' MSL. Trees beginning 3602' from DER, 627' right of centerline, up to 100' AGL/789' MSL. **Rwy 31**, trees beginning 594' from DER, 626' left of centerline, up to 100' AGL/789' MSL. Vehicles on roadway beginning 1038' from DER, 776' right of centerline, up to 17' AGL/746' MSL. Trees beginning 1652' from DER, 172' right of centerline, up to 100' AGL/789' MSL. Trees beginning 5157' from DER, 1284' right of centerline, up to 100' AGL/859' MSL.

PLATTEVILLE, WI**PLATTEVILLE MUNI (PVB)****TAKEOFF MINIMUMS AND (OBSTACLE)
DEPARTURE PROCEDURES**

ORIG 09239 (FAA)

NOTE: **Rwy 7**, vehicle on road beginning 499' from DER, left to right of centerline, up to 15' AGL/1053' MSL. Pavilion 250' from DER, 345' left of centerline, 17' AGL/1039' MSL. Poles beginning 208' from DER, 438' left of centerline, up to 37' AGL/1059' MSL. Trees beginning 224' from DER, 17' right of centerline, up to 47' AGL/1069' MSL. Trees beginning 257' from DER, 222' left of centerline, up to 29' AGL/1051' MSL. **Rwy 25**, tree 91' from DER, 277' left of centerline, 21' AGL/1020' MSL. Trees beginning 57' from DER, 325' right of centerline, up to 10' AGL/1009' MSL. **Rwy 15**, tree 1145' from DER, 620' right of centerline, 52' AGL/1073' MSL. Trees beginning 61' from DER, 208' left of centerline, up to 11' AGL/1032' MSL.

PONTIAC, IL**PONTIAC MUNI (PNT)****TAKEOFF MINIMUMS AND (OBSTACLE)
DEPARTURE PROCEDURES**

ORIG 08213 (FAA)

NOTE: **Rwy 24**, multiple buildings beginning 766' from DER, 60' left of centerline, up to 28' AGL/672' MSL. Tree 2226' from DER, 1040' right of centerline, 100' AGL/744' MSL. Multiple light poles beginning 3635' from DER, 262' right of centerline, up to 130' AGL/774' MSL.

POPLAR GROVE, IL**POPLAR GROVE (C77)****TAKEOFF MINIMUMS AND (OBSTACLE)
DEPARTURE PROCEDURES**

ORIG 99308 (FAA)

TAKEOFF MINIMUMS: **Rwy 30**, 300-1 or std. with a min. climb of 310' per NM to 1000. **Rwys 9, 12, 17, 27, 35**, NA.

17117

**TAKEOFF MINIMUMS, (OBSTACLE) DEPARTURE PROCEDURES, AND
DIVERSE VECTOR AREA (RADAR VECTORS)**

**TAKEOFF MINIMUMS, (OBSTACLE) DEPARTURE PROCEDURES, AND
DIVERSE VECTOR AREA (RADAR VECTORS)**

17117

PORTAGE, WI**PORTAGE MUNI (C47)****TAKEOFF MINIMUMS AND (OBSTACLE)
DEPARTURE PROCEDURES****AMDT 2 17005 (FAA)**

TAKEOFF MINIMUMS: **Rwy 22**, std. w/min. climb of 259' per NM to 1900 or 1000-2% for VCOA.

DEPARTURE PROCEDURE: **Rwy 18**, climb on heading 181° to 1900 before turning right.

VCOA: **Rwy 22**, obtain ATC approval for VCOA when requesting IFR clearance. Climb in visual conditions to cross Portage Muni airport at or above 1700 before proceeding on course.

NOTE: **Rwy 4**, trees and vehicles on road beginning at DER, 48' right of centerline, up to 100' AGL/925' MSL. Vehicles on road 1' from DER, 88' left of centerline, 15' AGL/840' MSL. **Rwy 18**, trees beginning 12' from DER, 27' left of centerline, up to 100' AGL/925' MSL. Trees and telephone line beginning 120' from DER, 264' left of centerline, up to 43' AGL/852' MSL. Trees beginning 1573' from DER, 551' left of centerline, up to 77' AGL/906' MSL. **Rwy 18**, trees and poles 5' from DER, 127' right of centerline, up to 42' AGL/860' MSL. Vehicle on road 64' from DER, 22' right of centerline, 15' AGL/835' MSL. Parking lots 222' from DER, 134' right of centerline, 837' MSL. Tree and parking lot beginning 336' from DER, 91' right of centerline, up to 874' MSL. Tree 373' from DER, 215' right of centerline, 888' MSL. Tree, parking lot, pole, bldg, telephone line and fence beginning 449' from DER, 19' right of centerline, up to 889' MSL. Tree 1008' from DER, 437' right of centerline, 895' MSL. Power transmission lines, tree, vehicles on road beginning 1072' from DER, 2' right of centerline, up to 77' AGL/906' MSL. Power transmission lines, vehicle on road, tree and pole beginning 1277' from DER, 43' right of centerline, up to 103' AGL/940' MSL. Pole beginning 47' from DER, 187' left of centerline, up to 26' AGL/848' MSL. Telephone line, pole and vehicle on road beginning 57' from DER, 81' left of centerline, up to 853' MSL. Tree 271' from DER, 148' left of centerline, 858' MSL. Tree and vehicle on road beginning 372' from DER, 135' left of centerline, up to 865' MSL. Tree 483' from DER, 621' left of centerline, 869' MSL. Tree and bldg beginning 529' from DER, 66' left of centerline, up to 880' MSL. Tree 600' from DER, 343' left of centerline, 882' MSL. Trees beginning 622' from DER, 453' left of centerline, up to 888' MSL. Tree, pole and telephone line beginning 700' from DER, 150' left of centerline, up to 892' MSL. Tree and power transmission lines beginning 905' from DER, 3' left of centerline, up to 902' MSL. Tree 1870' from DER, 111' left of centerline, 907' MSL. Tree, pole and power transmission lines beginning 1996' from DER, 1' left of centerline, up to 921' MSL. Power transmission lines and tree beginning 3392' from DER, 222' left of centerline, up to 925' MSL.

PORTAGE, WI (CON'T)

Rwy 22, trees beginning at DER, 107' right of centerline, up to 100' AGL/925' MSL. Parking lot 69' from DER, 222' right of centerline, 840' MSL. Vehicles on road beginning 377' from DER, 9' right of centerline, up to 15' AGL/840' MSL. Pole 403' from DER, 352' right of centerline, 63' AGL/886' MSL. Power transmission lines beginning 1000' from DER, 412' right of centerline, up to 64' AGL/886' MSL. Power transmission lines beginning 1833' from DER, 114' right of centerline, up to 899' MSL. Power transmission lines beginning 2295' from DER, 1054' right of centerline, up to 955' MSL. Bldg 7' from DER, 313' left of centerline, 33' AGL/856' MSL. Oil on bldg and parking lot beginning 14' from DER, 243' left of centerline, up to 859' MSL. Trees beginning 221' from DER, 68' left of centerline, up to 862' MSL. Tree, vehicles on road, pole and telephone line beginning 267' from DER, 44' left of centerline, up to 873' MSL. Tree 443' from DER, 245' left of centerline, 56' AGL/879' MSL. Tree, telephone line, pole, bldg and sign beginning 507' from DER, 137' left of centerline, up to 890' MSL. Power transmission lines beginning 1344' from DER, 830' left of centerline, up to 891' MSL. Power transmission lines beginning 1595' from DER, 562' left of centerline, up to 901' MSL. Trees beginning 2046' from DER, 183' left of centerline, up to 917' MSL. Tree 2542' from DER, 636' left of centerline, 923' MSL. Tree 2625' from DER, 1179' left of centerline, 925' MSL. **Rwy 36**, trees beginning 2' from DER, 43' right of centerline, up to 51' AGL/847' MSL. Tree and vehicles on road beginning 46' from DER, 28' right of centerline, up to 882' MSL. Trees beginning 1633' from DER, 13' right of centerline, up to 883' MSL. Trees beginning 2673' from DER, 407' right of centerline, up to 110' AGL/903' MSL. Vehicles on road beginning 13' from DER, 116' left of centerline, up to 821' MSL. Tree and vehicles on road beginning 105' from DER, 50' left of centerline, up to 827' MSL. Trees beginning 365' from DER, 224' left of centerline, up to 831' MSL. Tree 450' from DER, 126' left of centerline, 832' MSL. Tree 621' from DER, 128' left of centerline, 853' MSL. Trees beginning 707' from DER, 130' left of centerline, up to 875' MSL. Trees beginning 997' from DER, 11' left of centerline, up to 880' MSL. Tree 3079' from DER, 366' left of centerline, 893' MSL. Trees beginning 3167' from DER, 284' left of centerline, up to 903' MSL.

27 APR 2017 to 25 MAY 2017

27 APR 2017 to 25 MAY 2017

17117

**TAKEOFF MINIMUMS, (OBSTACLE) DEPARTURE PROCEDURES, AND
DIVERSE VECTOR AREA (RADAR VECTORS)**

TAKEOFF MINIMUMS, (OBSTACLE) DEPARTURE PROCEDURES, AND DIVERSE VECTOR AREA (RADAR VECTORS)

17117

PRAIRIE DU CHIEN, WI

PRAIRIE DU CHIEN MUNI (PDC)
TAKEOFF MINIMUMS AND (OBSTACLE)
DEPARTURE PROCEDURES
AMDT 4 12208 (FAA)

TAKEOFF MINIMUMS: **Rwy 11**, 200-1¼ or std. w/min. climb of 444' per NM to 900. **Rwy 14**, 600-3 w/min. climb of 251' per NM to 1400 or std. w/min. climb of 589' per NM to 1400, or 1200-2½ for climb in visual conditions. **Rwy 29**, 500-3 w/min. climb of 230' per NM to 1300 or std. w/min. climb of 261' per NM to 1300, or 1200-2½ for climb in visual conditions.

DEPARTURE PROCEDURE: **Rwy 11**, climb heading 110° to 2000 before turning. **Rwy 14**, climb heading 140° to 2000 before turning, for climb in visual conditions cross Prairie du Chien airport at or above 1700' MSL before proceeding on course. When executing VCOA, notify ATC prior to departure. **Rwy 29**, climb heading 290° to 2000 before turning, for climb in visual conditions cross Prairie du Chien airport at or above 1700' MSL before proceeding on course. When executing VCOA, notify ATC prior to departure. **Rwy 32**, climb heading 320° to 2000 before turning.

NOTE: **Rwy 11**, poles, signs, trees, terrain and road beginning 59' from DER, 9' left of centerline, up to 70' AGL/809' MSL. Trees beginning 966' from DER, 7' right of centerline, up to 111' AGL/810' MSL. **Rwy 14**, trees, terrain, and navaid beginning 21' from DER, 62' left of centerline, up to 187' AGL/801' MSL. Trees and railroad beginning 180' from DER, 53' right of centerline, up to 112' AGL/727' MSL. **Rwy 29**, tanks, railroad, trees, and road beginning 141' from DER, 11' left of centerline, up to 70' AGL/724' MSL. Trees, poles, road, and tower beginning 446' from DER, 89' right of centerline, up to 68' AGL/717' MSL. **Rwy 32**, nav aids 25' from DER, 77' left and right of centerline, up to 4' AGL/653' MSL. Pole 2410' from DER, 198' left of centerline, 60' AGL/714' MSL. Trees, poles, and towers beginning 1418' from DER, 200' right of centerline, up to 65' AGL/719' MSL.

PRAIRIE DU SAC, WI

SAUK-PRAIRIE (91C)
TAKEOFF MINIMUMS AND (OBSTACLE)
DEPARTURE PROCEDURES
ORIG 07354 (FAA)

TAKEOFF MINIMUMS: **Rwy 36**, std. w/ min. climb gradient of 221' per NM to 1700 or 1000-3 for climb in visual conditions.

DEPARTURE PROCEDURE: **Rwy 36**, climb heading 357° to 1700 before turning or for climb in visual conditions cross Sauk-Prairie Airport at or above 1700 MSL before proceeding on course.

NOTE: **Rwy 18**, utility pole, 330' from DER, 325' right of centerline, 19' AGL/839' MSL. Trees beginning 802' from DER, 175' left of centerline, up to 100' AGL/919' MSL. Trees beginning 921' from DER, on centerline, up to 100' AGL/929' MSL. **Rwy 36**, navigation light top 15' from DER, 35' right of centerline, 2' AGL/833' MSL. Navigation light top 16' from DER, 60' left of centerline, 3' AGL/834' MSL. Silo top 855' from DER, 414' left of centerline, up to 33' AGL/864' MSL. Trees beginning 967' from DER, 611' left of centerline, up to 60' AGL/891' MSL.

17117

TAKEOFF MINIMUMS, (OBSTACLE) DEPARTURE PROCEDURES, AND DIVERSE VECTOR AREA (RADAR VECTORS)

QUINCY, IL

QUINCY RGNL-BALDWIN FIELD (UIN)
TAKEOFF MINIMUMS AND (OBSTACLE)
DEPARTURE PROCEDURES
ORIG 07242 (FAA)

NOTE: **Rwy 4**, multiple trees beginning 1041' from DER, 707' right of centerline, up to 68' AGL/797' MSL. Tree 1128' from DER, 623' right of centerline, 43' AGL/775' MSL. **Rwy 18**, multiple trees beginning 1720' from DER, 534' left of centerline, up to 100' AGL/849' MSL. **Rwy 22**, tree 586' from DER, 636' right of centerline, 67' AGL/796' MSL. **Rwy 36**, multiple trees beginning 4' from DER, 165' right of centerline, up to 91' AGL/820' MSL.

RACINE, WI

JOHN H. BATTEN (RAC)
TAKEOFF MINIMUMS AND (OBSTACLE)
DEPARTURE PROCEDURES
AMDT 5 10042 (FAA)

NOTE: **Rwy 32**, blast fence 18' from DER, 103' left of centerline 10' AGL/682' MSL. Vehicle on road 11' from DER, left and right of centerline, 15' AGL/688' MSL. Antennas beginning 143' from DER, 209' left of centerline up to 63' AGL/736' MSL. Obstruction light on pole 215' from DER, 116' right of centerline 25' AGL/698' MSL. Trees beginning 97' from DER, 66' left of centerline up to 72' AGL/748' MSL. Trees beginning 357' from DER, 292' right of centerline up to 59' AGL/732' MSL. **Rwy 14**, vehicle on road beginning 184' from DER, right and left of centerline, up to 15' AGL/672' MSL. Tree 19' from DER, 314' left of centerline, 55' AGL/702' MSL. Trees beginning 71' from DER, 2' right of centerline, up to 100' AGL/753' MSL. Obstruction light on light stand 361' from DER, 525' right of centerline, 60' AGL/717' MSL. Antenna 821' from DER, 375' left of centerline, 48' AGL/698' MSL. **Rwy 4**, railroad beginning 18' from DER, right and left of centerline, up to 23' AGL/ 676' MSL. Trees beginning 195' from DER, 124' left of centerline, up to 52' AGL/712' MSL. Vehicle on road beginning 159' from DER left and right of centerline up to 15' AGL/675' MSL. Trees beginning 64' from DER, 96' right of centerline up to 65' AGL/711' MSL. Poles beginning 220' from DER, 309' left of centerline, up to 45' AGL/695' MSL. Pole 688' from DER, 419' right of centerline, 53' AGL/697' MSL. **Rwy 22**, vehicle on road, 26' from DER, right and left of centerline, 15' AGL/691' MSL. Light standard, 35' from DER, 426' left of centerline, 21' AGL/694' MSL. Trees beginning 252' from DER, 168' right of centerline, up to 86' AGL/713' MSL. Trees beginning 205' from DER, 37' right of centerline, up to 87' AGL/763' MSL. Antenna 3842' from DER, 1213' right of centerline, 104' AGL/797'56 MSL.

RANTOUL, IL

RANTOUL NATL AVN CNTR-FRANK
ELLIOTT FLD (TIP)
TAKEOFF MINIMUMS AND (OBSTACLE)
DEPARTURE PROCEDURES
AMDT 1 11349 (FAA)

NOTE: **Rwy 9**, trees beginning 1994' from DER, 28' right of centerline, up to 100' AGL/829' MSL. **Rwy 18**, trees beginning 1285' from DER, 12' left of centerline, up to 100' AGL/839' MSL. **Rwy 27**, trees beginning 2651' from DER, 15' right of centerline, up to 100' AGL/839' MSL. **Rwy 36**, trees beginning 1313' from DER, 5' right of centerline, up to 100' AGL/839' MSL. Tower 4949' from DER, 1784' right of centerline, 139' AGL/874' MSL.

27 APR 2017 to 25 MAY 2017

27 APR 2017 to 25 MAY 2017

TAKEOFF MINIMUMS, (OBSTACLE) DEPARTURE PROCEDURES, AND DIVERSE VECTOR AREA (RADAR VECTORS)

REEDSBURG, WI

REEDSBURG MUNI (C35)

TAKEOFF MINIMUMS AND (OBSTACLE)
DEPARTURE PROCEDURES
AMDT 2 12096 (FAA)

TAKEOFF MINIMUMS: **Rwys 7, 25**, NA-obstacles.

Rwy 18, std. w/min. climb of 505' per NM to 1400 or 400-1¼ w/min. climb of 215' per NM to 2000 or 800-2 ½, for climb in visual conditions. **Rwy 36**, 400 -2 or std. w/min. climb of 300' per NM to 1400.

DEPARTURE PROCEDURE: **Rwy 18**, for climb in visual conditions: cross Reedsburg Muni Airport at or above 1600 MSL before proceeding on course. When executing VCOA, notify ATC prior to departure.

NOTE: **Rwy 18**, trees beginning 22' from DER, 6' right of centerline, up to 88' AGL/1031' MSL. Train and railroad tracks 99' from DER, right to left of centerline, 23' AGL/900' MSL. Terrain beginning 286' from DER, 83' right of centerline, 1033' MSL. Vehicles on road 571' from DER, right to left of centerline, 15' AGL/1033' MSL. T-L tower 3633' from DER, right to left of centerline, up to 80' AGL/1009' MSL. Trees beginning 27' from DER, 6' left of centerline, up to 89' AGL/1032' MSL. Pole 3842' from DER, 39' left of centerline, up to 76' AGL/997' MSL. Terrain beginning 5518' from DER, 14' left of centerline, 1033' MSL. **Rwy 36**, vertical structures beginning 23' from DER, 62' right and left of centerline, up to 21' AGL/942' MSL. Vehicle on road 44' from DER, left to right of centerline, 15' AGL/962' MSL. Buildings beginning 79' from DER, 5' right of centerline, up to 29' AGL/1050' MSL. Trees beginning 100' from DER, 12' right of centerline, up to 40' AGL/1041' MSL. Fences beginning 121' from DER, right and left of centerline, up to 24' AGL/925' MSL. Signs beginning 196' from DER, left and right of centerline, up to 38' AGL/939' MSL. Parking lot 198' from DER, 295' right of centerline, 13' AGL/914' MSL. Poles beginning 204' from DER, right and left of centerline, up to 102' AGL/1043' MSL. Light support structures beginning 291' from DER, left and right of centerline, up to 44' AGL/945' MSL. Buildings beginning 328' from DER, 107' left of centerline, up to 55' AGL/976' MSL. Terrain beginning 397' from DER, 176' right of centerline, up to 915' MSL. Flag poles 825' from DER, 158' left of centerline, up to 37' AGL/978' MSL. Trees beginning 1032' from DER, 28' left of centerline, up to 40' AGL/1041' MSL.

RHINELANDER, WI

RHINELANDER-ONEIDA COUNTY (RHI)

TAKEOFF MINIMUMS AND (OBSTACLE)
DEPARTURE PROCEDURES
AMDT 4 10098 (FAA)

TAKEOFF MINIMUMS: **Rwy 9**, std. w/ min. climb of 230' per NM to 3900 before turning, or 900-2½ for climb in visual conditions.

DEPARTURE PROCEDURE: **Rwy 9**, for climb in visual conditions: cross Rhineland-ONEIDA County airport at or above 2400 before proceeding on course.

NOTE: **Rwy 9**, tree 3101' from DER, 1084' right of centerline, 61' AGL/1686' MSL. Tree 3117' from DER, 1194' left of centerline, 67' AGL/1685' MSL. **Rwy 15**, multiple trees beginning 624' from DER, 283' right of centerline, up to 63' AGL/1684' MSL. Multiple trees beginning 663' from DER, 376' left of centerline, up to 52' AGL/1660' MSL. Fence beginning 62' from DER, 482' left of centerline, up to 13' AGL/1625' MSL. Pole 729' from DER, 449' right of centerline, 22' AGL/1634' MSL. **Rwy 33**, multiple trees beginning 890' from DER, 234' right of centerline, up to 98' AGL/1709' MSL. Multiple trees beginning 187' from DER, 106' left of centerline, up to 83' AGL/1678' MSL. Poles beginning 1755' from DER, 297' right of centerline, up to 80' AGL/1691' MSL. Poles beginning 866' from DER, 106' left of centerline, up to 74' AGL/1669' MSL.

RICE LAKE, WI

RICE LAKE RGNL-CARL'S FIELD (RPD)

TAKEOFF MINIMUMS AND (OBSTACLE)
DEPARTURE PROCEDURES
ORIG 05132 (FAA)

TAKEOFF MINIMUMS: **Rwy 1**, std. with a min. climb of 231' per NM to 2200, or 1200-3 for climb in visual conditions.

DEPARTURE PROCEDURE: **Rwy 1**, for climb in visual conditions: Cross Rice Lake Rgnl-Carl's Field at or above 2300. **Rwy 31**, climb via heading 310° to 1900 before turning left.

NOTE: **Rwy 13**, trees 1550' from DER, 200' right of centerline, 67' AGL/1167' MSL. **Rwy 19**, trees 2780' from DER, 200' left of centerline, 73' AGL/1169' MSL. **Rwy 31**, trees 1480' from DER, 50' right of centerline, 64' AGL/1156' MSL.

RICHLAND CENTER, WI

RICHLAND (93C)

TAKEOFF MINIMUMS AND (OBSTACLE)
DEPARTURE PROCEDURES
AMDT 1A 07241 (FAA)

TAKEOFF MINIMUMS: **Rwys 9,17**, NA. **Rwy 27**, 400-2 or std. with a min. climb of 491' per NM to 1300. **Rwy 35**, 300-1 or std. with a min. climb of 222' per NM to 1800.

ROBINSON, IL

CRAWFORD CO (RSV)

TAKEOFF MINIMUMS AND (OBSTACLE)
DEPARTURE PROCEDURES
ORIG 08269 (FAA)

NOTE: **Rwy 9**, trees 2285' from DER, 474' right of centerline, 60' AGL/516' MSL. Trees 971' from DER, 594' left of centerline, 58' AGL/517' MSL. **Rwy 17**, tree 2493' from DER, 521' right of centerline, 100' AGL/589' MSL. **Rwy 27**, trees beginning at 178' from DER, 358' right of centerline, up to 78' AGL/547' MSL. Trees beginning at 2190' from DER, 89' left of centerline, 98' AGL/567' MSL. **Rwy 35**, road with vehicle 693' from DER, 611' right of centerline, 15' AGL/474' MSL. Tree 1545' from DER, 841' left of centerline, 100' AGL/554' MSL.

TAKEOFF MINIMUMS, (OBSTACLE) DEPARTURE PROCEDURES, AND DIVERSE VECTOR AREA (RADAR VECTORS)

TAKEOFF MINIMUMS, (OBSTACLE) DEPARTURE PROCEDURES, AND DIVERSE VECTOR AREA (RADAR VECTORS)

17117

ROCHELLE, IL

ROCHELLE MUNI AIRPORT-KORITZ FIELD
(RPJ)

TAKEOFF MINIMUMS AND (OBSTACLE)
DEPARTURE PROCEDURES
AMDT 4 16035 (FAA)

TAKEOFF MINIMUMS: **Rwy 7**, 300-1 with a min. climb of 243' per NM to 1700 or std. w/min. climb of 364' per NM to 1200.
NOTE: **Rwy 7**, runway lights and NAVAIDS beginning 10' from DER, 17' left and right of centerline, up to 3' AGL/782' MSL. Fence 184' from DER, 427' right of centerline, 6' AGL/787' MSL. Tree 292' from DER, 482' right of centerline, 64' AGL/845' MSL. Trees and transmission line towers beginning 505' from DER, 375' right of centerline, up to 72' AGL/853' MSL. Vehicle on road 695' from DER, 244' right of centerline, 15' AGL/799' MSL. Transmission line towers beginning 1056' from DER, 425' left of centerline, up to 39' AGL/814' MSL. Tower 3413' from DER, 1135' right of centerline, 120' AGL/924' MSL. Elevator 3540' from DER, 953' right of centerline, 135' AGL/943' MSL. **Rwy 25**, bush 108' from DER, 465' left of centerline, 6' AGL/778' MSL. Road sign 152' from DER, 532' right of centerline, 22' AGL/794' MSL, tree 1625' from DER, 805' right of centerline, 61' AGL/831' MSL.

ST. JACOB, IL

ST LOUIS METRO-EAST/ SHAFER FIELD
(3K6)

TAKEOFF MINIMUMS AND (OBSTACLE)
DEPARTURE PROCEDURES
ORIG 87155 (FAA)
TAKEOFF MINIMUMS: **Rwy 13**, 300-1.

SALEM, IL

SALEM-LECKRONE (SLO)

TAKEOFF MINIMUMS AND (OBSTACLE)
DEPARTURE PROCEDURES
AMDT 7 13010 (FAA)

TAKEOFF MINIMUMS: **Rwy 18**, 300-1½ or std. w/min. climb of 291' per NM to 900' MSL.
DEPARTURE PROCEDURE: **Rwy 18**, Climb heading 181° to 1900 before turning east.
NOTE: **Rwy 18**, trees beginning 272' from DER, left and right of centerline, up to 100' AGL/635' MSL. Antenna tower 1.0 NM from DER, 257' right of centerline, 200' AGL/739' MSL. Tower 1.0 NM from DER, 126' left of centerline, 188' AGL/724' MSL. **Rwy 36**, trees beginning 59' from DER, 249' right of centerline, up to 20' AGL/588' MSL.

SAVANNA, IL

TRI-TOWNSHIP (SFY)

TAKEOFF MINIMUMS AND (OBSTACLE)
DEPARTURE PROCEDURES
ORIG 12152 (FAA)

TAKEOFF MINIMUMS: **Rwy 13**, 300-2½ or std. w/ min. climb of 203' per NM to 1100.
NOTE: **Rwy 13**, trees beginning 98' from DER, left and right of centerline, up to 100' AGL/638' MSL. Vehicles on roads beginning 20' from DER, left and right of centerline, up to 17' AGL/629' MSL. AG equipment beginning 688' from DER, 225' left of centerline, up to 21' AGL/633' MSL. Terrain beginning 62' from DER, left and right of centerline, up to 630' MSL.
Rwy 31, trees beginning 133' from DER, left and right of centerline, up to 100' AGL/689' MSL. Vehicles on roads beginning 8' from DER, left and right of centerline 15' AGL/627' MSL. RR 536' from DER, 339' left of centerline, up to 17' AGL/627' MSL.

17117

SHAWANO, WI

SHAWANO MUNI (EZS)

TAKEOFF MINIMUMS AND (OBSTACLE)
DEPARTURE PROCEDURES
AMDT 2A 14093 (FAA)

TAKEOFF MINIMUMS: **Rwy 12**, 600-3 or std. w/ min. climb of 329' per NM to 1600. **Rwy 17**, 300-2 or std. w/ min. climb of 245' per NM to 1200. **Rwy 30**, 300-1½ or std. w/ min. climb of 248' per NM to 1100.
NOTE: **Rwy 12**, tower 2.3 NM from DER, 3006' right of centerline, 222' AGL/1240' MSL. Multiple trees beginning 1700' from DER, 389' left to 2432' right of centerline, up to 100' AGL/1149' MSL.. **Rwy 17**, multiple trees beginning 1710' from DER, 2951' left to 1292' right of centerline, up to 100' AGL/1059' MSL. Elevator 5839' from DER, 738' right of centerline, 149' AGL/979' MSL. **Rwy 30**, multiple trees beginning 649' from DER, 1052' left to 1117' right of centerline, up to 100' AGL/929' MSL. Vehicle on road 538' from DER, crossing left to right 17' AGL/826' MSL. Water tank 1.1 NM from DER, 1310' right of centerline, 175' AGL/1019' MSL.. **Rwy 35**, ships 1007' from DER, left to right of centerline, up to 60' AGL/869' MSL. Vehicle on road 580' from DER, left to right of centerline, up to 15' AGL/824' MSL. Multiple trees beginning 2200' from DER, 724' left of centerline, up to 100' AGL/909' MSL.

SHEBOYGAN, WI

SHEBOYGAN COUNTY MEMORIAL
(SBM)

TAKEOFF MINIMUMS AND (OBSTACLE)
DEPARTURE PROCEDURES
AMDT 2 13010 (FAA)

NOTE: **Rwy 13**, tree 366' from DER, 106' left of centerline, 31' AGL/761' MSL. Tree 494' from DER, 33' left of centerline, 24' AGL/754' MSL. Trees beginning 29' from DER, 391' left of centerline, up to 91' AGL/821' MSL. Vehicle on road 553' from DER, west to east, 15' AGL/764' MSL. Poles and trees beginning 543' from DER, 493' right of centerline, up to 62' AGL/805' MSL. **Rwy 22**, obstruction light on localizer 157' from DER, 4' left of centerline, 11' AGL/750' MSL. Aircraft on ramp, 780' from DER, 645' left of centerline, 15' AGL/764' MSL. Trees 1709' from DER, 35' left of centerline, 83' AGL/794' MSL. Vehicle on road, 702' from DER, 589' right of centerline, 15' AGL/764' MSL. Tree 230' from DER, 377' right of centerline, 27' AGL/767' MSL. Trees 1475' from DER, 291' right of centerline, 92' AGL/792' MSL. Transmission line tower 5414' from DER, 1625' right of centerline, 133' AGL/883' MSL. **Rwy 31**, pole 405' from DER, 40' right of centerline, 27' AGL/777' MSL. Trees and fence 70' from DER, 352' right of centerline, up to 56' AGL/806' MSL. Trees 1345' from DER, 482' right of centerline, 76' AGL/826' MSL. Trees 2227' from DER, 18' right of centerline, 71' AGL/821' MSL. Trees 1604' from DER, 32' left of centerline, 95' AGL/845' MSL. Tower 4606' from DER, 920' left of centerline, 139' AGL/889' MSL. Transmission line tower 4691' from DER, 1003' left of centerline, 140' AGL/890' MSL..

TAKEOFF MINIMUMS, (OBSTACLE) DEPARTURE PROCEDURES, AND DIVERSE VECTOR AREA (RADAR VECTORS)

TAKEOFF MINIMUMS, (OBSTACLE) DEPARTURE PROCEDURES, AND
DIVERSE VECTOR AREA (RADAR VECTORS)

17117

SHELBYVILLE, IL

SHELBY COUNTY (2H0)

TAKEOFF MINIMUMS AND (OBSTACLE)
DEPARTURE PROCEDURES

ORIG 10154 (FAA)

TAKEOFF MINIMUMS: **Rwys 4, 22, 14, 32**, NA-
Environmental.

NOTE: **Rwy 18**, vehicle on roadway 529' from DER, left and right of centerline, 15' AGL/634' MSL. Building 716' from DER, 561' left of centerline, 25' AGL/644' MSL. Trees 1755' from DER, left and right of centerline, up to 100' AGL/709' MSL. **Rwy 36**, vehicle on roadway 665' from DER, left and right of centerline, 15' AGL/644' MSL. Trees beginning 835' from DER, 653' right of centerline, up to 100' AGL/709' MSL. Trees beginning 1500' from DER, 819' left of centerline, up to 100' AGL/709' MSL.

SHELL LAKE, WI

SHELL LAKE MUNI (SSQ)

TAKEOFF MINIMUMS AND (OBSTACLE)
DEPARTURE PROCEDURES

ORIG 08045 (FAA)

TAKEOFF MINIMUMS: **Rwy 14**, 200-1¼ or std. w/ min climb of 238' per NM to 1500, or alternatively with standard takeoff minimums and a normal 200'/NM climb gradient, takeoff must occur no later than 2000' prior to DER. **Rwy 32**, 200-1 ¼ or std. w/ min climb of 235' per NM to 1500, or alternatively with standard takeoff minimums and normal 200'/NM climb gradient, takeoff must occur no later than 2000' prior to DER.

NOTE: **Rwy 14**, Vehicle and road 91' from DER, 167' left of centerline, up to 15' AGL/1244' MSL. Trees beginning 147' from DER, 89' right of centerline up to 100' AGL/1409' MSL. Vehicle and road 218' from DER, 144' right of centerline, up to 15' AGL/1244' MSL. Trees beginning 358' from DER, 306' left of centerline up to 100' AGL/1329' MSL. **Rwy 32**, vehicle and road 84' from departure end of runway, 3' left of centerline, up to 15' AGL/1264' MSL. Railroad 347' from DER, 56' left of centerline, up to 23' AGL/1272' MSL. Vehicle and road 745' from DER 30' right of centerline, up to 15' AGL/1274' MSL. Railroad 827' from departure end runway, 686' right of centerline, up to 23' AGL/1272' MSL. Trees 2467' from DER, 853' right of centerline, up to 100' AGL/1349' MSL. Trees 2645' from DER, 100' left of centerline, up to 100' AGL/1419' MSL.

SIREN, WI

BURNETT COUNTY (RZN)

TAKEOFF MINIMUMS AND (OBSTACLE)
DEPARTURE PROCEDURES

ORIG 13122 (FAA)

NOTE: **Rwy 5**, trees beginning 89' from DER, 18' left of centerline, up to 46' AGL/1035' MSL. Trees beginning 546' from DER 144' right of centerline, up to 55' AGL/1044' MSL. Trees beginning 1020' from DER, 33' left of centerline, up to 74' AGL/1063' MSL. Trees beginning 1026' from DER 28' right of centerline, up to 81' AGL/1070' MSL. Poles beginning 221' from DER, 227' right of centerline, up to 30' AGL/1014' MSL. Vehicles on road, beginning 147' from DER, 181' right of centerline, up to 15' AGL/1002' MSL. Building 450' from DER, 471' right of centerline, 18' AGL/1007' MSL. Equipment 96' from DER, 474' right of centerline, 3' AGL/987' MSL. **Rwy 14**, trees beginning 271' from DER, 351' left of centerline, up to 37' AGL/1026' MSL. Trees beginning 493' from DER, 439' right of centerline, up to 64' AGL/1053' MSL. Trees beginning 1277' from DER, 13' left of centerline, up to 98' AGL/1087' MSL. Trees beginning 1198' from DER, 7' right of centerline, up to 107' AGL/1096' MSL. Vehicles on road, beginning 306' from DER, 56' right and left of centerline, up to 15' AGL' MSL. Poles beginning 667' from DER, 207' right of centerline, up to 45' AGL/1007' MSL. Poles beginning 679' from DER, 41' left of centerline, up to 38' AGL/1027' MSL. Building 1168' from DER, 90' right of centerline, 35' AGL/1019' MSL. **Rwy 23**, trees beginning 56' from DER, 267' left of centerline, up to 62' AGL/1051' MSL. Trees beginning 35' from DER, 49' right of centerline, up to 19' AGL/1008' MSL. Trees beginning 1086' from DER, 10' left of centerline, up to 79' AGL/1068' MSL. Trees beginning 1091' from DER, 8' right of centerline, up to 75' AGL/1069' MSL. REIL 10' from DER, 76' left of centerline, 7' AGL/991' MSL. REIL 10' from DER, 77' right of centerline, 6' AGL/990' MSL. Pole 1655' from DER, 10' left of centerline, 50' AGL/ 1034' MSL. **Rwy 32**, trees beginning 1174' from DER, 449' left of centerline, up to 45' AGL/1029' MSL. Trees beginning 297' from DER, 522' right of centerline, up to 50' AGL/1039' MSL. Trees beginning 1400' from DER, 23' left of centerline, up to 78' AGL/1062' MSL. Trees beginning 1057' from DER, 23' right of centerline, up to 72' AGL/1056' MSL. Poles beginning 942' from DER, 83' left of centerline, up to 49' AGL/1033' MSL. Poles beginning 871' from DER, 393' right of centerline, up to 29' AGL/1018' MSL. Vehicles on road, beginning 118' from DER, 521' left of centerline, up to 15' AGL/998' MSL.

27 APR 2017 to 25 MAY 2017

27 APR 2017 to 25 MAY 2017

17117

TAKEOFF MINIMUMS, (OBSTACLE) DEPARTURE PROCEDURES, AND
DIVERSE VECTOR AREA (RADAR VECTORS)

TAKEOFF MINIMUMS, (OBSTACLE) DEPARTURE PROCEDURES, AND DIVERSE VECTOR AREA (RADAR VECTORS)

17117

SOLON SPRINGS, WI

SOLON SPRINGS MUNI (OLG)
TAKEOFF MINIMUMS AND (OBSTACLE)
DEPARTURE PROCEDURES
ORIG 11293 (FAA)

NOTE: **Rwy 1**, building 37' from DER, 509' right of centerline, 19' AGL/1119' MSL. Trees beginning 55' from DER, 329' left of centerline, up to 49' AGL/1149' MSL. Vehicles on roadway left and right of centerline beginning 77' from DER, up to 15' AGL/1114' MSL. Poles beginning 785' from DER, 526' right of centerline, up to 43' AGL/1143' MSL. Trees beginning 1140' from DER, 277' right of centerline, up to 48' AGL/1148' MSL. Trees left and right of centerline beginning 1474' from DER, up to 61' AGL/1161' MSL. **Rwy 19**, structure 12' from DER, 20' left of centerline, 3' AGL/1104' MSL. Vehicles on roadway beginning 20' from DER, 248' right of centerline, up to 15' AGL/1116' MSL. Terrain 40' from DER, 109' right of centerline, 1104' MSL. Trees beginning 45' from DER, 307' right of centerline, up to 40' AGL/1141' MSL. Trees beginning 74' from DER, 319' left of centerline, up to 75' AGL/1176' MSL. Trees left and right of centerline beginning 1027' from DER, up to 54' AGL/1155' MSL. Transmission line beginning 2455' from DER, 740' right of centerline, up to 123' AGL/1224' MSL. Trees beginning 2539' from DER, 631' left of centerline, up to 85' AGL/1186' MSL.

SPARTA, IL

SPARTA COMMUNITY-HUNTER FIELD
(SAR)
TAKEOFF MINIMUMS AND (OBSTACLE)
DEPARTURE PROCEDURES
AMDT 1 13038 (FAA)

TAKEOFF MINIMUMS: **Rwys 9, 27**, NA-Environmental. **Rwy 18**, 300-1¼ or std. w/ min. climb of 316' per NM to 1000 MSL.
NOTE: **Rwy 18**, tower 1.4 NM from DER, 771' right of centerline, 260' AGL/780' MSL. Multiple light poles beginning 41' from DER, 495' right of centerline, up to 33' AGL/572' MSL. Antenna 1838' from DER, 615' right of centerline, 51' AGL/590' MSL. Multiple buildings beginning at 388' from DER, 378' right of centerline, up to 38' AGL/569' MSL. Trees beginning 119' from DER, 65' left of centerline, up to 100' AGL/580' MSL. Trees beginning 9' from DER, 8' right of centerline, up to 100' AGL/630' MSL. Water tower 5238' from DER, 666' right of centerline, 140' AGL/669' MSL. Sign 12' from DER, 152' right of centerline, 5' AGL/526' MSL. Vehicles on road beginning 500' from DER, 144' right of centerline, 15' AGL/536' MSL. **Rwy 36**, trees beginning 165' from DER, 166' left of centerline, up to 100' AGL/610' MSL. Trees beginning 612' from DER, 413' right of centerline, up to 100' AGL/619' MSL.

SPARTA, WI

SPARTA/FORT MC COY (CMY)
TAKEOFF MINIMUMS AND (OBSTACLE)
DEPARTURE PROCEDURES
AMDT 2 11811 (FAA)

TAKEOFF MINIMUMS: **Rwy 1**, 400-1½. **Rwy 19**, 500-2¾ w/ min. climb of 217' per NM to 1800 or std. w/ min. climb of 425' per NM to 1500, or 1100-2½, for climb in visual conditions ...
DEPARTURE PROCEDURE: **Rwy 1**, climb heading 030° to 1600 before turning on course. **Rwy 11**, climb heading 112° to 1800 before turning on course. **Rwy 19**, climb heading 195° to 1500 before turning on course. **Rwy 29**, climb heading 287° to 1500 before turning on course. For climb in visual conditions. Cross Sparta/Fort Mc Coy airport at or above 1800' MSL before proceeding on course.
NOTE: **Rwy 1**, rising terrain beginning 14' from DER, left and right of centerline, up to 1019' MSL. Trees beginning 73' from DER, left and right of centerline, up to 100' AGL/1119' MSL. Vehicles on road beginning 1437' from DER, left and right of centerline, up to 15' AGL/874' MSL. **Rwy 11**, Obstruction light on pole 759' from DER, 232' left of centerline, 26' AGL/854' MSL. Trees beginning 989' from DER, left and right of centerline, up to 100' AGL/949' MSL.
Rwy 19, trees beginning 99' from DER, left and right of centerline, up to 100' AGL/1239' MSL. Ridge 8695' from DER, 2008' left of centerline, 0' AGL/1122' MSL. **Rwy 29**, trees beginning 802' from DER, 31' left of centerline, up to 61' AGL/879' MSL. Pole 1447' from DER, 432' right of centerline, 50' AGL/866' MSL.

SPRINGFIELD, IL

ABRAHAM LINCOLN CAPITAL (SPI)
TAKEOFF MINIMUMS AND (OBSTACLE)
DEPARTURE PROCEDURES
ORIG 05300 (FAA)

NOTE: **Rwy 4**, multiple trees beginning 1456' from DER, 734' left of centerline, up to 59' AGL/650' MSL. **Rwy 13**, bush 342' from DER, 299' right of centerline, 43' AGL/592' MSL. **Rwy 18**, tower 1702' from DER, 778' right of centerline, 100' AGL/659' MSL. Multiple trees beginning 1503' from DER, 283' right of centerline, up to 98' AGL/660' MSL. Building 2.53 NM from DER, 1.2 NM left of centerline, 405' AGL/1000' MSL. **Rwy 31**, multiple trees beginning 1641' from DER, 619' left of centerline, up to 81' AGL/665' MSL. **Rwy 36**, multiple trees beginning 1873' from DER, 470' left of centerline, up to 79' AGL/670' MSL. Rod on tower 2397' from DER, 501' right of centerline, 55' AGL/653' MSL.

STERLING-ROCKFALLS, IL

WHITESIDE COUNTY-JOSEPH H. BITTORF
FIELD (SQI)
TAKEOFF MINIMUMS AND (OBSTACLE)
DEPARTURE PROCEDURES
ORIG 08325 (FAA)

NOTE: **Rwy 7**, elevator 3095' from DER, 1099' right of centerline, 91' AGL/741' MSL. **Rwy 18**, vehicle on roadway 736' from DER, on centerline, 15' AGL/664' MSL. Tree 1012' from DER, 288' left of centerline, 35' AGL/680' MSL. Tree 787' from DER, 120' right of centerline, 29' AGL/669' MSL. Multiple trees beginning 3619' from DER, 944' left of centerline, up to 100' AGL/769' MSL. **Rwy 25**, multiple trees beginning 1308' from DER, 22' left of centerline, up to 82' AGL/732' MSL. Multiple trees beginning 666' from DER, 42' right of centerline, up to 80' AGL/720' MSL. **Rwy 36**, vehicle on roadway, 575' from DER, on centerline, 17' AGL/668' MSL. Tree 564' from DER, 103' right of centerline, 11' AGL/662' MSL.

17117

TAKEOFF MINIMUMS, (OBSTACLE) DEPARTURE PROCEDURES, AND DIVERSE VECTOR AREA (RADAR VECTORS)

TAKEOFF MINIMUMS, (OBSTACLE) DEPARTURE PROCEDURES, AND
DIVERSE VECTOR AREA (RADAR VECTORS)

17117

STEVENS POINT, WI

STEVENS POINT MUNI (STE)
 TAKEOFF MINIMUMS AND (OBSTACLE)
 DEPARTURE PROCEDURES
 ORIG 09015 (FAA)

NOTE: **Rwy 3**, trees beginning 1175' from DER, 649' left of centerline, 54' AGL/1173' MSL. Tree 2693' from DER, 556' right of centerline, 62' AGL/1181' MSL.
Rwy 21, trees beginning 1127' from DER, 119' right of centerline, up to 100' AGL/1209' MSL. Trees beginning 1247' from DER, 151' left of centerline, up to 45' AGL/1153' MSL. **Rwy 12**, poles beginning 177' from DER, 197' right of centerline, up to 37' AGL/1126' MSL. Trees beginning 757' from DER, 27' right of centerline, up to 95' AGL/1204' MSL. Trees beginning 958' from DER, 112' left of centerline, up to 87' AGL/1196' MSL. **Rwy 30**, building 217' from DER, 535' left of centerline, 30' AGL/1139' MSL. Vehicle and road 499' from DER, on centerline, 15' AGL/1124' MSL. Trees beginning 848' from DER, 66' left of centerline, up to 87' AGL/1206' MSL. Trees beginning 869' from DER, 139' right of centerline, up to 81' AGL/1210' MSL.

STURGEON BAY, WI

DOOR COUNTY CHERRYLAND (SUE)
 TAKEOFF MINIMUMS AND (OBSTACLE)
 DEPARTURE PROCEDURES
 ORIG 07242 (FAA)

DEPARTURE PROCEDURE: **Rwy 2**, climb heading 016° to 1700 before turning east.
 NOTE: **Rwy 2**, 100' tree 1.4 NM from DER, 2674' left of centerline, 100' AGL/839' MSL. **Rwy 10**, 130' boat 5128' from DER, on centerline, 130' AGL/710' MSL.
Rwy 20, multiple trees, antennas, vehicle on road, poles beginning 121' from DER, 374' right of centerline, 90' AGL/802' MSL. Multiple poles and trees beginning 320' from DER, 250' left of centerline, 81' AGL/797' MSL. **Rwy 28**, vehicle on road 355' from DER, on centerline, 15' AGL/734' MSL.

SUPERIOR, WI

RICHARD I. BONG (SUW)
 TAKEOFF MINIMUMS AND (OBSTACLE)
 DEPARTURE PROCEDURES
 AMDT 6 14093 (FAA)

TAKEOFF MINIMUMS: **Rwy 4**, 300-1 or std. w/min. climb of 386' per NM to 1000.
 DEPARTURE PROCEDURE: **Rwy 4**, climb heading 038° to 1900 before turning left. **Rwy 14**, climb heading 141° to 1200 before proceeding on course. **Rwy 22**, Climb heading 218° to 1300 before proceeding on course. **Rwy 32**, climb heading 321° to 2200 before turning right.

NOTE: **Rwy 4**, navaid 11' from DER, 78' right of centerline, 3' AGL/661' MSL. Bush and trees beginning 4' from DER, 150' left of centerline, up to 20' AGL/671' MSL. Fence and trees beginning 105' from DER, 202' right of centerline, up to 24' AGL/677' MSL. Train on railroad beginning 459' from DER, 494' right of centerline, up to 23' AGL/684' MSL. Trees beginning 535' from DER, 375' left of centerline, up to 48' AGL/699' MSL. Trees beginning 865' from DER, 599' right of centerline, up to 49' AGL/700' MSL. Trees beginning 965' from DER, crossing centerline, up to 55' AGL/706' MSL. Poles beginning 1692' from DER, 663' left of centerline, up to 64' AGL/715' MSL. Chimney 4059' from DER, 1488' left of centerline, 225' AGL/861' MSL. **Rwy 14**, navaid 49' from DER, 99' left of centerline, 3' AGL/675' MSL. Navaid 50' from DER, 102' right of centerline, 3' AGL/675' MSL. Tree 424' from DER, 568' right of centerline, 16' AGL/687' MSL. Vehicle on road beginning 506' from DER, crossing centerline, up to 15' AGL/689' MSL. Trees beginning 573' from DER, 29' right of centerline, up to 35' AGL/706' MSL. Trees beginning 579' from DER, 216' left of centerline, up to 21' AGL/692' MSL. Train on railroad beginning 805' from DER, crossing centerline, up to 23' AGL/698' MSL. Trees beginning 1083' from DER, 119' right of centerline, up to 45' AGL/711' MSL. Pole 1794' from DER, 956' left of centerline, 77' AGL/738' MSL. Pole 2166' from DER, 643' left of centerline, 72' AGL/733' MSL. **Rwy 22**, terrain 5' from DER, 380' left of centerline, 673' MSL. Navaid 11' from DER, 78' right of centerline, 3' AGL/671' MSL. Navaid 12' from DER, 77' left of centerline, 3' AGL/673' MSL. Trees beginning 84' from DER, 329' right of centerline, up to 14' AGL/675' MSL. Poles beginning 689' from DER, 424' right of centerline, up to 25' AGL/696' MSL. Pole 1312' from DER, 793' left of centerline, 47' AGL/708' MSL. Building 1578' from DER, 831' right of centerline, 49' AGL/720' MSL. **Rwy 32**, navaid 49' from DER, 102' right of centerline, 3' AGL/674' MSL. Navaid 50' from DER, 101' left of centerline, 3' AGL/674' MSL. Poles beginning 667' from DER, 413' left of centerline, up to 25' AGL/696' MSL. Sign and trees beginning 1023' from DER, 117' left of centerline, up to 43' AGL/714' MSL. Trees beginning 1380' from DER, 23' right of centerline, up to 59' AGL/720' MSL. Tree 1481' from DER, 825' right of centerline, 51' AGL/712' MSL. Communication towers beginning 3136' from DER, 1112' left of centerline, up to 118' AGL/779' MSL.

27 APR 2017 to 25 MAY 2017

27 APR 2017 to 25 MAY 2017

17117

TAKEOFF MINIMUMS, (OBSTACLE) DEPARTURE PROCEDURES, AND
DIVERSE VECTOR AREA (RADAR VECTORS)

TAKEOFF MINIMUMS, (OBSTACLE) DEPARTURE PROCEDURES, AND DIVERSE VECTOR AREA (RADAR VECTORS)

17117

TAYLORVILLE, IL

TAYLORVILLE MUNI (TAZ)
TAKEOFF MINIMUMS AND (OBSTACLE)
DEPARTURE PROCEDURES
ORIG 05300 (FAA)
TAKEOFF MINIMUMS: **Rwys 9, 27**, NA-no survey data.
NOTE: **Rwy 18**, numerous trees 1000' from DER, from 335' left of centerline to 1150' right of centerline, up to 100' AGL/719' MSL. **Rwy 36**, numerous trees 1580' from DER, from 20' left of centerline to 570' right of centerline, up to 100' AGL/724' MSL.

TOMAH, WI

BLLOYER FIELD (Y72)
TAKEOFF MINIMUMS AND (OBSTACLE)
DEPARTURE PROCEDURES
ORIG 15344 (FAA)
TAKEOFF MINIMUMS: **Rwy 25**, 300-1½ or std. w/min. climb of 295' per NM to 1400.
DEPARTURE PROCEDURE: **Rwy 25**, climb heading 248° to 1500 before proceeding on course.
NOTE: **Rwy 7**, trees beginning 6' from DER, 442' left of centerline, up to 70' AGL/1028' MSL. Trees beginning 58' from DER, 373' right of center, up to 59' AGL/1019' MSL. Trees beginning 224' from DER, 192' right of centerline, up to 68' AGL/1028' MSL. Rr 615' from DER, 566 left of centerline, 23' AGL/983' MSL. Trees beginning 1091' from DER, 500' left of centerline, up to 82' AGL/1042' MSL. Trees beginning 1180 from DER, crossing centerline, up to 99' AGL/1049' MSL. **Rwy 25**, building 3' from DER, 430' left of centerline, 26' AGL/976' MSL. Buildings beginning 122' from DER, 388' left of centerline, up to 16' AGL/980' MSL. Tree tops, poles and cranes (mobile) beginning 288' from DER, right to left of centerline, up to 40' AGL/1010' MSL. Vehicle on road (n) beginning 512' from DER, crossing centerline, 15' AGL/987' MSL. Trees, utility pole tops, poles, treetops and transmission towers beginning 596' from DER, left to right of centerline, up to 59' AGL/1029' MSL. Poles, ant, utility pole tops, sign, and trees beginning 605' from DER, left to right of centerline, up to 30' AGL/999' MSL. Treetops, cranes (mobile), trees, utility pole tops, and transmission towers beginning 735' from DER, right to left of centerline, up to 50' AGL/1020' MSL. Transmission towers and trees beginning 843' from DER, right to left of centerline, up to 74' AGL/1044' MSL. Trees, TL tower, and pole beginning 2361' from DER, left to right of centerline, up to 85' AGL/1055' MSL. Tower and OL communication beginning 1.21 NM from DER, 713' right of centerline, up to 207' AGL/1177' MSL.

TOMAHAWK, WI

TOMAHAWK RGNL (TKV)
TAKEOFF MINIMUMS AND (OBSTACLE)
DEPARTURE PROCEDURES
AMDT 1 12152 (FAA)
NOTE: **Rwy 9**, vehicles on road 160' from DER, right and left of runway, up to 15' AGL/1494' MSL. Trees beginning 2' from DER, right and left of runway, up to 100' AGL/1599' MSL. **Rwy 27**, obstruction light on windsock 10' from DER, 400' left of centerline, 25' AGL/1496' MSL. Vehicle on road 11' from DER, right and left of runway, 15' AGL/1479' MSL. Trees beginning 40' from DER, right and left of centerline, up to 100' AGL/1599' MSL.

17117

TAKEOFF MINIMUMS, (OBSTACLE) DEPARTURE PROCEDURES, AND DIVERSE VECTOR AREA (RADAR VECTORS)

VANDALIA, IL

VANDALIA MUNI (VLA)
TAKEOFF MINIMUMS AND (OBSTACLE)
DEPARTURE PROCEDURES
ORIG 12152 (FAA)
NOTE: **Rwy 9**, trees 2563' from DER, 140' right of centerline, 100' AGL/649' MSL. Trees 3364' from DER, 740' left of centerline, 100' AGL/644' MSL. **Rwy 18**, trees 764' from DER, 519' right of centerline, 100' AGL/629' MSL. Trees beginning 3115' from DER, 293' left of centerline, 100' AGL/659' MSL. **Rwy 27**, trees beginning 1581' from DER, 885' right of centerline, 100' AGL/659' MSL. Trees beginning 2548' from DER, 4' to 1230' left of centerline, 100' AGL/649' MSL. **Rwy 36**, trees beginning 256' from DER, 327' to 882' right of centerline, 100' AGL/659' MSL. Trees beginning 1834' from DER, 288' to 1548' left of centerline, 100' AGL/649' MSL.

VIROQUA, WI

VIROQUA MUNI (Y51)
TAKEOFF MINIMUMS AND (OBSTACLE)
DEPARTURE PROCEDURES
AMDT 1 12320 (FAA)
TAKEOFF MINIMUMS: **Rwys 2, 20**, NA-Environmental.
NOTE: **Rwy 11**, trees beginning 14' from DER, 191' left of centerline, up to 55' AGL/1335' MSL. Poles and sign beginning 24' from DER, 148' right of centerline, up to 45' AGL/1325' MSL. Elevators, tank and buildings beginning 188' from DER, 424' right of centerline, up to 138' AGL/1418' MSL. Trees beginning 1230' from DER, 365' right of centerline, up to 68' AGL/1348' MSL. Water tower 2692' from DER, 700' right of centerline, 150' MSL/1430' MSL. Elevators and tank beginning 4101' from DER, 50' left of centerline, up to 143' AGL/1423' MSL. **Rwy 29**, trees beginning 36' from DER, 99ft right of centerline, up to 64' AGL/1304' MSL. Trees beginning 184' from DER, 203' left of centerline, up to 41' AGL/1281' MSL.

VOLK FIELD (KVOK)

CAMP DOUGLAS, WI
TAKEOFF MINIMUMS AND (OBSTACLE)
DEPARTURE PROCEDURES
07186
TAKEOFF OBSTACLES: **Rwy 27**: Trees 80' AGL/1019' MSL, 2537' from DER, 983' right of centerline. Trees 80' AGL/1039' MSL, 3742' from DER, 835' left of centerline. **Rwy 9**: Antenna 50' AGL/1040' MSL, 4966' from DER, 625' left of centerline.

WATERTOWN, WI

WATERTOWN MUNI (RYV)
TAKEOFF MINIMUMS AND (OBSTACLE)
DEPARTURE PROCEDURES
DEPARTURE PROCEDURE: **Rwy 5**, climb runway heading to 2500 before heading west. **Rwy 29**, climb runway heading to 2500 before turning north.

27 APR 2017 to 25 MAY 2017

TAKEOFF MINIMUMS, (OBSTACLE) DEPARTURE PROCEDURES, AND DIVERSE VECTOR AREA (RADAR VECTORS)

17117

WAUKESHA, WI

WAUKESHA COUNTY (UES)

TAKEOFF MINIMUMS AND (OBSTACLE) DEPARTURE PROCEDURES

AMDT 6 09127 (FAA)

TAKEOFF MINIMUMS: **Rwy 10**, 400-2½ or std. with a min. climb of 316' per NM to 1400.

NOTE: **Rwy 10**, light pole 146' from DER, 326' left of centerline, 9' AGL/918' MSL. Light pole 560' from DER, 597' left of centerline, 17' AGL/936' MSL. Pipe on building 229' from DER, 275' left of centerline, 16' AGL/925' MSL. Trees beginning 1652' from DER, 171' right of centerline, up to 70' AGL/1029' MSL. Trees beginning 1868' from DER, 16' left of centerline, up to 54' AGL/983' MSL. Tower 1.0 NM from DER, 1571' right of centerline, 219' AGL/1148' MSL. Tower 1.1 NM from DER, 1140' right of centerline, 177' AGL/1126' MSL. Tower 1.8 NM from DER, 3455' right of centerline, 272' AGL/1238' MSL. **Rwy 18**, vehicle on road 618' from DER, 162' left of centerline, 15' AGL/946' MSL. Bush 746' from DER, 107' right of centerline, 9' AGL/938' MSL. Trees beginning 753' from DER, 187' right of centerline, up to 18' AGL/957' MSL. Tree 757' from DER, 182' left of centerline, 17' AGL/946' MSL. Tree 1188' from DER, 27' left of centerline, 27' AGL/956' MSL. Pole 1976' from DER, 304' left of centerline, 48' AGL/967' MSL. Pole 2026' from DER, 196' right of centerline, 62' AGL/981' MSL. Tower 2010' from DER, 932' left of centerline, 66' AGL/984' MSL. Rod on stack 4489' from DER, 657' left of centerline, 118' AGL/1037' MSL. **Rwy 28**, vehicle on road 877' from DER, 541' left of centerline, 15' AGL/924' MSL. Pole 1078' from DER, 739' left of centerline, 47' AGL/936' MSL. **Rwy 36**, rod on pole 401' from DER, 555' left of centerline, 46' AGL/945' MSL. Vehicle on road 300' from DER, 349' right of centerline, 15' AGL/914' MSL. Trees beginning 486' from DER, 175' right of centerline, up to 81' AGL/970' MSL. Trees beginning 999' from DER, 124' left of centerline, up to 72' AGL/962' MSL.

WAUPACA, WI

WAUPACA MUNI (PCZ)

TAKEOFF MINIMUMS AND (OBSTACLE) DEPARTURE PROCEDURES

AMDT 2 05020 (FAA)

TAKEOFF MINIMUMS: **Rwy 28**, 300-2 or std. w/min. climb of 317' per NM to 1300.

NOTES: **Rwy 10**, trees 1400' from DER, 300' left of centerline, 41' AGL/850' MSL. **Rwy 13**, road and vehicle 240' from DER, 275' right of centerline, 29' AGL/832' MSL. **Rwy 28**, trees 1.1 NM from DER, 1848' left of centerline, 100' AGL, 1119' MSL. **Rwy 31**, trees 800' from DER, 150' left of centerline, 19' AGL/846' MSL. Trees 1965' from DER, 585' left of centerline, 100' AGL/979' MSL.

WAUSAU, WI

WAUSAU DOWNTOWN (AUW)

TAKEOFF MINIMUMS AND (OBSTACLE) DEPARTURE PROCEDURES

AMDT 6 12292 (FAA)

TAKEOFF MINIMUMS: **Rwy 5**, 400-2½ or std. w/min. climb of 378' per NM to 1700. **Rwy 23**, 700-3 or std. w/ min. climb of 362' per NM to 2100.

DEPARTURE PROCEDURE: **Rwy 5**, climb heading 047° to 2100 before proceeding on course. **Rwy 13**, climb heading 127° to 2200 before proceeding on course. **Rwy 23**, climb heading 227° to 2800 before proceeding on course. **Rwy 31**, climb heading 307° to 2800 before proceeding on course.

NOTE: **Rwy 5**, trees beginning 885' from DER, 53' right of centerline, up to 100' AGL/1409' MSL. Rising terrain and trees beginning 4552' from DER, right to left of centerline, up to 100' AGL/1529' MSL. **Rwy 13**, boat with mast beginning 215' from DER, 498' right of centerline, up to 100' AGL/1222' MSL. **Rwy 23**, trees and boats with masts beginning 299' from DER, 8' right of centerline, up to 100' AGL/1269' MSL. Trees and boats with masts beginning 332' from DER, 190' left of centerline, up to 100' AGL/1609' MSL. Tower 2.3 NM from DER, 3952' left of centerline, 248' AGL/1840' MSL. **Rwy 31**, boat with mast beginning 236' from DER, 511' right of centerline to 100' AGL/1222' MSL. Trees and boats with masts beginning 169' from DER, 27' left of centerline, up to 100' AGL/1222' MSL.

WAUTOMA, WI

WAUTOMA MUNI (Y50)

TAKEOFF MINIMUMS AND (OBSTACLE) DEPARTURE PROCEDURES

ORIG 98225 (FAA)

DEPARTURE PROCEDURE: **Rwy 31**, climb runway heading to 1800 before turning north.

WEST BEND, WI

WEST BEND MUNI (ETB)

TAKEOFF MINIMUMS AND (OBSTACLE) DEPARTURE PROCEDURES

ORIG 10042 (FAA)

TAKEOFF MINIMUMS: **Rwy 13**, 300-1½ or std. w/ a min. climb of 260' per NM to 1200. **Rwy 24**, 300-2 or std. w/ a min. climb of 250' per NM to 1400. **Rwy 31**, 300-1¼ or standard w/ a min. climb of 220' per NM to 1100.

NOTE: **Rwy 6**, vehicle on roads beginning 15' from DER, 251' left of centerline, up to 17' AGL/959' MSL. Trees beginning 85' from DER, 2' left of centerline, up to 100' AGL/1019' MSL. Trees beginning 47' from DER, 91' right of centerline, up to 100' AGL/886' MSL. **Rwy 13**, trees beginning 452' from DER, 127' left of centerline, up to 100' AGL/1109' MSL. Trees beginning 214' from DER, 179' right of centerline, up to 100' AGL/1049' MSL. **Rwy 24**, trees beginning 114' from DER, 74' left of centerline, up to 100' AGL/1029' MSL. Trees beginning 89' from DER, 120' right of centerline, up to 100' AGL/969' MSL. Tower 1.9 NM from DER, 2572' right of centerline, 196' AGL/1156' MSL. **Rwy 31**, vehicle on road 99' from DER, 492' left of centerline, 15' AGL/904' MSL. Trees beginning 550' from DER, 173' left of centerline, up to 100' AGL/1039' MSL. Vehicle on road 61' from DER, 498' right of centerline, 15' AGL/906' MSL. Trees beginning 832' from DER, 236' right of centerline, up to 100' AGL/1009' MSL.

17117

TAKEOFF MINIMUMS, (OBSTACLE) DEPARTURE PROCEDURES, AND DIVERSE VECTOR AREA (RADAR VECTORS)

 TAKEOFF MINIMUMS, (OBSTACLE) DEPARTURE PROCEDURES, AND 
17117 DIVERSE VECTOR AREA (RADAR VECTORS)

WISCONSIN RAPIDS, WI

ALEXANDER FIELD SOUTH WOOD
COUNTY (ISW)

TAKEOFF MINIMUMS AND (OBSTACLE)
DEPARTURE PROCEDURES

AMDT 2 13010 (FAA)

TAKEOFF MINIMUMS: **Rwys 18,36**, NA-
Environmental.

NOTE: **Rwy 2**, navaid 9' from DER, 125' right of centerline, 7' AGL/1022' MSL. Tree 109' from DER, 308' left of centerline, 26' AGL/1041' MSL. Trees beginning 179' from DER, 313' right of centerline, up to 67' AGL/1082' MSL. Trees beginning 962' from DER, left and right of centerline, up to 91' AGL/1111' MSL. **Rwy 12**, pole 1401' from DER, 93' right of centerline, 97' AGL/1097' MSL. Trees beginning 2326' from DER, 58' left of centerline, up to 99' AGL/1107' MSL. **Rwy 20**, trees beginning 125' from DER, 362' right of centerline, up to 101' AGL/1076' MSL. Trees beginning 88' from DER, 273' left of centerline, up to 85' AGL/1085' MSL. Trees beginning 2784' from DER, 126' right of centerline, up to 101' AGL/1093' MSL.

27 APR 2017 to 25 MAY 2017

27 APR 2017 to 25 MAY 2017